

Product datasheet for RC206317

RPL18 (NM_000979) Human Tagged ORF Clone

Product data:

Product Type: Expression Plasmids
Product Name: RPL18 (NM_000979) Human Tagged ORF Clone
Tag: Myc-DDK
Symbol: RPL18
Synonyms: DBA18; L18
Mammalian Cell Selection: Neomycin
Vector: pCMV6-Entry (PS100001)
E. coli Selection: Kanamycin (25 ug/mL)
ORF Nucleotide Sequence: >RC206317 ORF sequence
 Red=Cloning site Blue=ORF Green=Tags(s)

TTTTGTAATACGACTCACTATAGGGCGGCCGGAATTCGTCGACTGGATCCGGTACCGAGGAGATCTGCC
 GCC**CGATCGCC**

ATGGGAGTGGACATCCGCCATAACAAGGACCGAAAGGTTTCGGCGCAAGGAGCCCAAGAGCCAGGATATCT
 ACCTGAGGCTGTTGGTCAAGTTATACAGGTTTCTGGCCAGAAGAACCACTCCACATTCAACCAGGTTGT
 GTTGAAGAGGTTGTTTATGAGTCGCACCAACCGGCCCTCTGTGCCCTTCCCGGATGATCCGGAAGATG
 AAGCTTCTGGCCGGGAAAACAAGACGGCCGTGGTTGTGGGGACCATAACTGATGATGTGCGGGTTCAGG
 AGGTACCCAAACTGAAGGTATGTGCACTGCGCGTGACCAGCCGGGCCCGAGCCGCATCCTCAGGGCAGG
 GGGCAAGATCCTCACTTTGACCAAGCTGGCCCTGGACTCCCTAAGGGCTGTGGCACTGTCTGCTCTCC
 GGTCTCGCAAGGGCCGAGAGGTGTACCGCATTTTCGGCAAGGCCCCAGGAACCCCGCACAGCCACACCA
 AACCTACGTCCGCTCCAAGGGCCGGAAGTTTCAGCGTGCCAGAGGCCGACGGCCAGCCGAGGCTACAA
 AAC

ACGCGTACGCGGCCGCTCGAGCAGAACTCATCTCAGAAGAGGATCTGGCAGCAATGATATCCTGGATT
 ACAAGGATGACGACGATAAGGTTTAA

Protein Sequence: >RC206317 protein sequence
 Red=Cloning site Green=Tags(s)

MGVDIRHNKDRKVRKPKSQDIYLRLLVKLYRFLARNTSTFNQVVLKRLFMSRTNRPPLCLSRMIRKM
 KLPGRNKTAVVVGITDDVRVQEVPKLVKALRVTSRARSRI LRAGGKILTFDQLALDSPKGCVTLLS
 GPRKGREVYRHF GKAPGTPHSHTKPYVRSKGRKFERARGRRASRGYKN

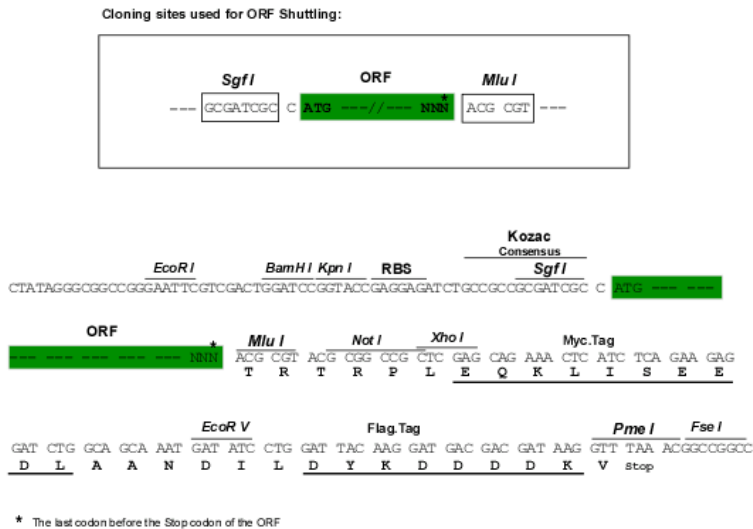
TRTRPLEQKLISEEDLAANDILDYKDDDDKV



Chromatograms: https://cdn.origene.com/chromatograms/mk6318_g02.zip

Restriction Sites: SgfI-MluI

Cloning Scheme:



ACCN: NM_000979

ORF Size: 564 bp

OTI Disclaimer: The molecular sequence of this clone aligns with the gene accession number as a point of reference only. However, individual transcript sequences of the same gene can differ through naturally occurring variations (e.g. polymorphisms), each with its own valid existence. This clone is substantially in agreement with the reference, but a complete review of all prevailing variants is recommended prior to use. [More info](#)

OTI Annotation: This clone was engineered to express the complete ORF with an expression tag. Expression varies depending on the nature of the gene.

Components: The ORF clone is ion-exchange column purified and shipped in a 2D barcoded Matrix tube containing 10ug of transfection-ready, dried plasmid DNA (reconstitute with 100 ul of water).

Reconstitution Method:

1. Centrifuge at 5,000xg for 5min.
2. Carefully open the tube and add 100ul of sterile water to dissolve the DNA.
3. Close the tube and incubate for 10 minutes at room temperature.
4. Briefly vortex the tube and then do a quick spin (less than 5000xg) to concentrate the liquid at the bottom.
5. Store the suspended plasmid at -20°C. The DNA is stable for at least one year from date of shipping when stored at -20°C.

RefSeq: [NM_000979.4](#)

RefSeq Size: 893 bp

RefSeq ORF: 567 bp

Locus ID: 6141

UniProt ID: [Q07020](#)

Cytogenetics: 19q13.33

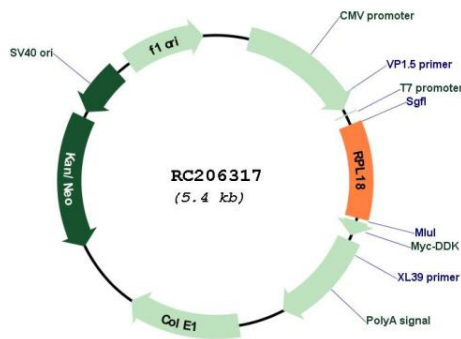
Domains: Ribosomal_L18e

Protein Pathways: Ribosome

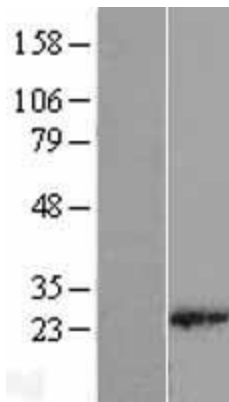
MW: 21.7 kDa

Gene Summary: Ribosomes, the organelles that catalyze protein synthesis, consist of a small 40S subunit and a large 60S subunit. Together these subunits are composed of 4 RNA species and approximately 80 structurally distinct proteins. This gene encodes a member of the L18E family of ribosomal proteins that is a component of the 60S subunit. As is typical for genes encoding ribosomal proteins, there are multiple processed pseudogenes of this gene dispersed through the genome. Alternatively spliced transcript variants encoding multiple isoforms have been observed for this gene. [provided by RefSeq, Jul 2012]

Product images:



Circular map for RC206317



Western blot validation of overexpression lysate (Cat# [LY424425]) using anti-DDK antibody (Cat# [TA50011-100]). Left: Cell lysates from untransfected HEK293T cells; Right: Cell lysates from HEK293T cells transfected with RC206317 using transfection reagent MegaTran 2.0 (Cat# [TT210002]).



Coomassie blue staining of purified RPL18 protein (Cat# [TP306317]). The protein was produced from HEK293T cells transfected with RPL18 cDNA clone (Cat# RC206317) using MegaTran 2.0 (Cat# [TT210002]).