

Product datasheet for RC206316

TRAM1 (NM_014294) Human Tagged ORF Clone

Product data:

Product Type:	Expression Plasmids
Product Name:	TRAM1 (NM_014294) Human Tagged ORF Clone
Tag:	Myc-DDK
Symbol:	TRAM1
Synonyms:	PNAS8; TRAM; TRAMP
Mammalian Cell Selection:	Neomycin
Vector:	pCMV6-Entry (PS100001)
E. coli Selection:	Kanamycin (25 ug/mL)
ORF Nucleotide Sequence:	>RC206316 representing NM_014294 Red=Cloning site Blue=ORF Green=Tags(s)

TTTTGTAATACGACTCACTATAGGGCGGCCGGAATTCGTCGACTGGATCCGGTACCGAGGAGATCTGCC
GCC**CGATCGCC**

ATGGCGATTTCGAAGAAAAGCACCAAGAGCCCCCAGTGCTGAGCCACGAATTCGTCTGCAGAATCAGC
CGGACATCGTCTCCTGTGGCGATGGTCTTCTGCTGGGGCTCATGTTGAGATAACGGCAAAGCTTC
TATCATTTTTGTTACTCTTCAGTACAATGTCACCCTCCAGCAACAGAAGAACAAGCTACTGAATCAGTG
TCCCTTTATTACTATGGCATCAAAGATTTGGCTACTGTTTTCTTCTACATGCTAGTGGCGATAATTATTC
ATGCCGTAATTCAAGAGTATATGTTGGATAAAAATTAACAGCGCAATGCACCTTCTCCAAAACAAAACACAG
CAAGTTTAATGAATCTGGTCAGCTTAGTGCGTTCTACCTTTTTGCCTGTGTTGGGGCACATTCATTCTC
ATCTCTGAAAACACTACATCTCAGACCCAATCTTATGGAGGGCTTATCCCCATAACCTGATGACATTTT
AAATGAAGTTTTTCTACATATCACAGCTGGCTTACTGGCTTCATGCTTTTCTGAACTCTACTTCCAGAA
AACCAAAAAGAAGATATTCCTCGTCAGCTTGTCTACATTGGTCTTTACCTCTCCACATTGCTGGAGCT
TACCTTTTGAACCTGAATCATCTAGGACTTGTCTTCTGGTGCTACATTATTTGTTGAATTTCTTTTCC
ACATTTCCCGCCTGTTTTATTTTAGCAATGAAAAGTATCAGAAAGGATTTTCTCTGTGGCGAGTTCTTTT
TGTTTTGGGAAGACTTCTGACTTTAATCTTTTCAGTACTGACTGTTGGTTTTGGCCTTGCAAGAGCAGAA
AATCAGAAGCTGGATTTTCAGTACTGAAACTTCAATGTGTTAGCTGTTAGAATCGCTGTTCTGGCATCCA
TTTGCCTTACTCAGGCATTTATGATGTGGAAGTTCATTAAATTTTCAGCTTCAAGGTGGAGGGAACATTC
TGCTTTTCAGGCACCAGCTGTGAAGAAGAAACCAACAGTAACTAAAGGCAGATCTTCTAAAAAAGGAACA
GAAAATGGTGTGAATGGAACATTAACCTCAATGTAGCAGACTCTCCCCGAATAAAAAAGAGAAATCTT
CA

ACGCGTACGCGGCCGCTCGAGCAGAAACTCATCTCAGAAGAGGATCTGGCAGCAATGATATCCTGGATT
ACAAGGATGACGACGATAAGGTTTAA



[View online >](#)

Protein Sequence: >RC206316 representing NM_014294
Red=Cloning site Green=Tags(s)

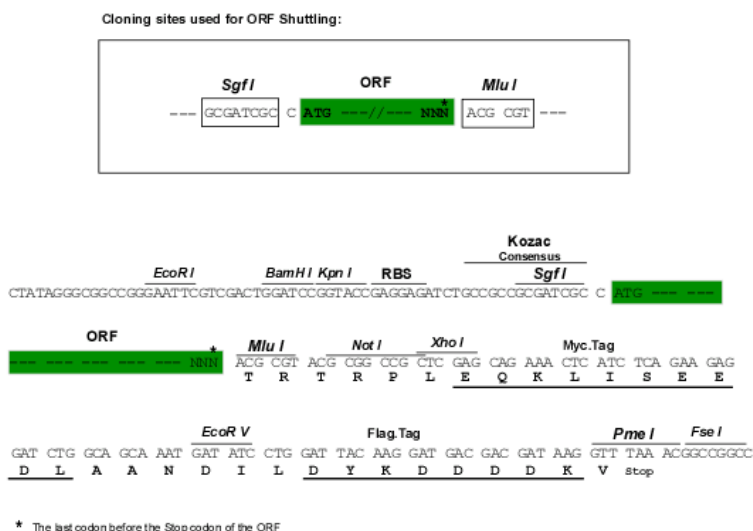
MAIRKKSTKSPVLSHEFVLQNHADIVSCVAMVFLGLMFEITAKASIIFVTLQYNVTLPATEEQATESV
 SLYYYGIKDLATVFFYMLVAIIHAVIQEYMLDKINRRMHFSKTKHSKFNESGQLSAFYLFACVWGTFIL
 ISENYISDPTILWRAYPHNLMTFQMKFFYISQLAYWLHAFPELYFQKTKKEDIPRQLVYIGLYLFHIIAGA
 YLLNLNHLGLVLLVLYHYFVEFLFHSRLFYFSNEKYQKGFSLWAVLFLVLRLLTLILSVLTVGFGLARAE
 NQKLDLDFSTGNFNVLAVRIAHLASICVLTQAFMMWKFINFQLRRWREHSAPAVKPKPTVTKGRSSKKG
 ENGVNGTLTNSVADSPRNKKEKSS

TRTRPLEQKLISEEDLAANDILDYKDDDDKV

Chromatograms: https://cdn.origene.com/chromatograms/mk8076_f09.zip

Restriction Sites: SgfI-MluI

Cloning Scheme:



ACCN: NM_014294

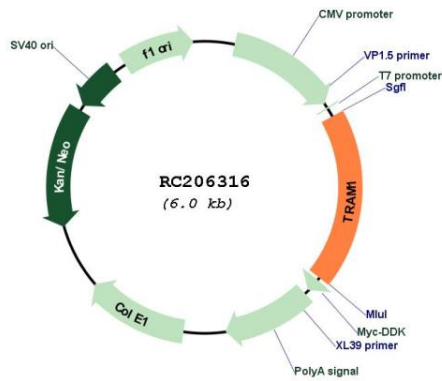
ORF Size: 1122 bp

OTI Disclaimer: Due to the inherent nature of this plasmid, standard methods to replicate additional amounts of DNA in E. coli are highly likely to result in mutations and/or rearrangements. Therefore, OriGene does not guarantee the capability to replicate this plasmid DNA. Additional amounts of DNA can be purchased from OriGene with batch-specific, full-sequence verification at a reduced cost. Please contact our customer care team at custsupport@origene.com or by calling 301.340.3188 option 3 for pricing and delivery.

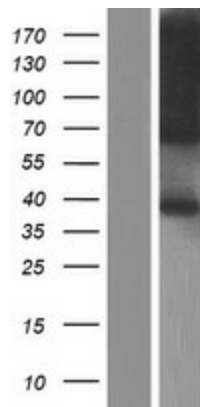
The molecular sequence of this clone aligns with the gene accession number as a point of reference only. However, individual transcript sequences of the same gene can differ through naturally occurring variations (e.g. polymorphisms), each with its own valid existence. This clone is substantially in agreement with the reference, but a complete review of all prevailing variants is recommended prior to use. [More info](#)

OTI Annotation:	This clone was engineered to express the complete ORF with an expression tag. Expression varies depending on the nature of the gene.
Components:	The ORF clone is ion-exchange column purified and shipped in a 2D barcoded Matrix tube containing 10ug of transfection-ready, dried plasmid DNA (reconstitute with 100 ul of water).
Reconstitution Method:	<ol style="list-style-type: none">1. Centrifuge at 5,000xg for 5min.2. Carefully open the tube and add 100ul of sterile water to dissolve the DNA.3. Close the tube and incubate for 10 minutes at room temperature.4. Briefly vortex the tube and then do a quick spin (less than 5000xg) to concentrate the liquid at the bottom.5. Store the suspended plasmid at -20°C. The DNA is stable for at least one year from date of shipping when stored at -20°C.
RefSeq:	NM_014294.6
RefSeq Size:	2808 bp
RefSeq ORF:	1125 bp
Locus ID:	23471
UniProt ID:	Q15629
Cytogenetics:	8q13.3
Domains:	LAG1, TLC
Protein Families:	Druggable Genome, Transmembrane
MW:	42.9 kDa
Gene Summary:	This gene encodes a multi-pass membrane protein that is part of the mammalian endoplasmic reticulum. The encoded protein influences glycosylation and facilitates the translocation of secretory proteins across the endoplasmic reticulum membrane by regulating which domains of the nascent polypeptide chain are visible to the cytosol during a translocational pause. [provided by RefSeq, Oct 2009]

Product images:



Circular map for RC206316



Western blot validation of overexpression lysate (Cat# [LY415381]) using anti-DDK antibody (Cat# [TA50011-100]). Left: Cell lysates from untransfected HEK293T cells; Right: Cell lysates from HEK293T cells transfected with RC206316 using transfection reagent MegaTran 2.0 (Cat# [TT210002]).