

## Product datasheet for **RC206311**

### ACSS1 (NM\_032501) Human Tagged ORF Clone

#### Product data:

Product Type:	Expression Plasmids
Product Name:	ACSS1 (NM_032501) Human Tagged ORF Clone
Tag:	Myc-DDK
Symbol:	ACSS1
Synonyms:	ACAS2L; ACECS1; AceCS2L
Mammalian Cell Selection:	Neomycin
Vector:	pCMV6-Entry (PS100001)
E. coli Selection:	Kanamycin (25 ug/mL)



[View online »](#)

ORF Nucleotide  
Sequence:

>RC206311 ORF sequence  
Red=Cloning site Blue=ORF Green=Tags(s)

TTTTGTAATACGACTCACTATAGGGCGGCCGGGAATTCGTCGACTGGATCCGGTACCGAGGAGATCTGCC  
GCCGCGATCGCC

ATGGCGGCGCGCACCCCTGGGCCGCGCGTGGGAGGCTGCTGGGCAGCCTGCGAGGGCTCTCGGGGCAGC  
CCGCGCGGCCCGCGTGCAGGGTGAAGCGCCCGCAGGGCGGCCCTCGGGACCCTCGGGCAGCGCTCCCGC  
AGTTGCAGCAGCAGCAGCACAGCCAGGCTCGTATCCCGCGCTGAGTGCACAGGCAGCCCGGAGCCGGCC  
GCCTTCTGGGGCCTCTGGCGCGGGACACTCTCGTGTGGGACACCCCTACCACACCGTCTGGGACTGCG  
ACTTCAGCACTGGCAAGATCGGCTGGTTCTGGGAGGCCAGTTAAATGTCTGTCAACTGCTTGGACCA  
GCATGTTCCGAAGTCCCCGAGAGCGTTGCTTTGATCTGGGAGCGCGATGAGCCTGGAACGGAAGTGAAG  
ATCACCTACAGGGAAGTACTGGAGACCAGTGCAGCCTGGCCAAACAGCCTGAAGAGGCATGGAGTCCACC  
GTGGGGACCGTGTGCCATCTACATGCCCGTGTCCCATTTGGCTGTGGCAGCAATGCTGGCCTGTGCCAG  
GATCGGAGCTGTCCACACAGTCACTTTGCTGGCTTCAGTGGGAGTCCCTGGCTGGGAGGATCAATGAT  
GCCAAGTCAAGGTGTTATCACCTTCAACCAAGGACTCCGGGGTGGGCGCGTGGTGGAGCTGAAGAAAA  
TAGTGGATGAGGCTGTGAAGCACTGCCCCACCGTGCAGCATGTCCTGGTGGCTCACAGGACAGACAA  
GGTCCACATGGGGGATCTGGACGTCCTCGCTGGAGCAGGAAATGGCCAAGGAGGACCCTGTTTGCGCCCA  
GAGAGCATGGGCAGTGAAGACATGCTCTTATGCTGTACACCTCAGGGAGCACCAGGAAATGCCAAGGGCA  
TCGTCCATACCCAGGCAGGCTACCTGCTCTATGCCGCCCTGACTCACAAGCTTGTGTTTACCACAGCC  
AGGTGACATCTTTGGCTGTGTGGCCGACATCGGTTGGATTACAGGACACAGCTACGTGGTGTATGGCCCT  
CTCTGCAATGGTCCACCAGCGTCTTTTTGAGAGCACCCAGTTTATCCAATGCTGGTGGTACTGGG  
AGCAGTAGAGAGGTTGAAGATCAATCAGTTCTATGGCGCCCAACGGCTGTCCGGCTGTTGCTGAAATA  
CGGTGATGCCTGGGTGAAGAAGTATGATCGCTCCTCCCTGCGGACCCTGGGGTCACTGGGAGAGCCCATC  
AACTGTGAGGCCTGGGAGTGGCTTACAGGGTGGTGGGGACAGCAGGTGCACGCTGGTGGACACCTGGT  
GGCAGACAGAAACAGGTGGCATCTGCATCGCACACCAGGCCCTCGGAAGAAGGGGCGGAAATCCTCCCTGC  
CATGGCGATGAGGCCCTTCTTTGGCATCGTCCCGTCTCATGGATGAGAAGGGCAGCGTCATGGAGGGC  
AGCAACGTCTCCGGGGCCCTGTGCATCTCCAGGCCTGGCCGGGCATGGCCAGGACCATCTATGGCGACC  
ACCAGCGATTTGTGGACGCTACTTCAAGGCCTACCCAGGCTATTACTTCACTGGAGACGGGGCTTACCG  
AACTGAGGGCGGCTATTACCAGATCACAGGGCGGATGGATGATGTCATCAACATCAGTGGCCACCGGCTG  
GGGACCGCAGAGATTGAGGACGCCATCGCCGACCACCCTGCAGTACCAGAAAGTGTGTCATTGGCTACC  
CCCACGACATCAAAGGAGAAGCTGCCTTTGCCTTATTGTGGTGAAGATAGTGGGGTACTCAGATGT  
GGTGGTGCAGGAGCTCAAGTCCATGGTGGCCACCAAGATCGCCAAATATGCTGTGCTGATGAGATCCTG  
GTGGTGAACGCTTCCAAAAACAGGCTCTGGGAAGGTGATGCGGCGGCTCCTGAGGAAGATCATCACTA  
GTGAGGCCAGGAGCTGGGAGACACTACCACCTTGGAGGACCCAGCATCATCGCAGAGATCCTGAGTGT  
CTACCAGAAGTGAAGGACAAGCAGGCTGCTGCTAAG

ACGCGTACGCGGCCGCTCGAGCAGAACTCATCTCAGAAGAGGATCTGGCAGCAATGATATCCTGGATT  
ACAAGGATGACGACGATAAGGTTTAA

**Protein Sequence:** >RC206311 protein sequence  
Red=Cloning site Green=Tags(s)

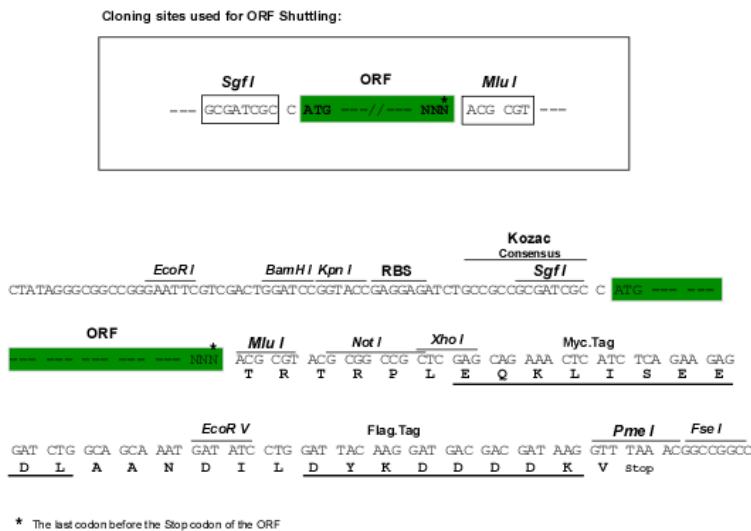
MAARTLGRGVGRLLGSLRGLSGQPAPPCGVSAPRRAASGPSGSAPAVAAAAAQPGSYPALSAQAAREPA  
 AFWGPLARDTLVWDTPTYHTVWDCDFSTGKIGWFLGGQLNVSVNCLDQHVRKSPESVALIWERDEPGTEVR  
 ITYRELLETTCLRLANTLKRHGVRGRDRVAIYMPVSPPLAVAAAMLACARIGAVHTVIFAGFSAESLAGRIND  
 AKCKVVIITFNQGLRGRVVELKKIVDEAVKHCPVQHVLAHRTDNKVMGDLDPLEQEMAKEDPVCAP  
 ESMGSEDMLFMLYTSGSTGMPKGI VHTQAGYLLYAALTHKLVFDHQPDI FGCVADIGWITGHSYVYGP  
 LCNGATSVLFESTPVYPNAGRYWETVERLKNQFYGAPTAVRLLKYGDAWVKKYDRSSLRTLGSVGEPI  
 NCEAWEWLHRVVGDSRCTLVDTWWQTETGGICIA PRPSEEGAEILPAMAMRPF FGI PVLMDEKGSVMEG  
 SNVSGALCISQAWPGMARTIYGDHQRFDVAYFKAYPGYYFTGDGAYRTEGGYYQITGRMDDVINISGHR  
 GTAEIEDAIADHPAVPESAVIGYPHDIKGEAAFAFIVVKDSAGSDVVVQELKSMVATKI AKYAVPDEIL  
 VVKRLPKTRSGKVMRLLRKKIITSEAQELGDTTLEDPSIIAEILSVYQKCKDKQAAAK

TRTRPLEQKLI SEEDLAANDILDYKDDDDKV

**Chromatograms:** [https://cdn.origene.com/chromatograms/mk6834\\_b11.zip](https://cdn.origene.com/chromatograms/mk6834_b11.zip)

**Restriction Sites:** SgfI-MluI

**Cloning Scheme:**



**ACCN:** NM\_032501

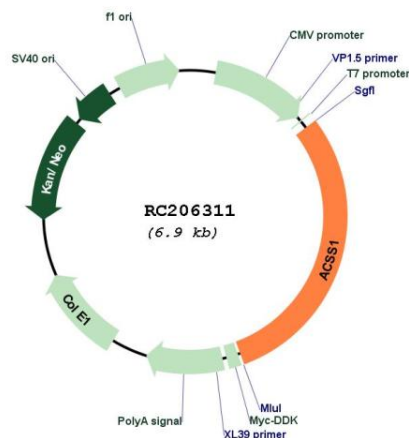
**ORF Size:** 2067 bp

**OTI Disclaimer:** The molecular sequence of this clone aligns with the gene accession number as a point of reference only. However, individual transcript sequences of the same gene can differ through naturally occurring variations (e.g. polymorphisms), each with its own valid existence. This clone is substantially in agreement with the reference, but a complete review of all prevailing variants is recommended prior to use. [More info](#)

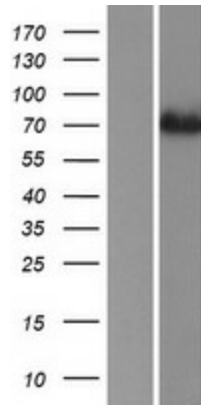
**OTI Annotation:** This clone was engineered to express the complete ORF with an expression tag. Expression varies depending on the nature of the gene.

<b>Components:</b>	The ORF clone is ion-exchange column purified and shipped in a 2D barcoded Matrix tube containing 10ug of transfection-ready, dried plasmid DNA (reconstitute with 100 ul of water).
<b>Reconstitution Method:</b>	<ol style="list-style-type: none"> <li>1. Centrifuge at 5,000xg for 5min.</li> <li>2. Carefully open the tube and add 100ul of sterile water to dissolve the DNA.</li> <li>3. Close the tube and incubate for 10 minutes at room temperature.</li> <li>4. Briefly vortex the tube and then do a quick spin (less than 5000xg) to concentrate the liquid at the bottom.</li> <li>5. Store the suspended plasmid at -20°C. The DNA is stable for at least one year from date of shipping when stored at -20°C.</li> </ol>
<b>RefSeq:</b>	<u><a href="#">NM_032501.1</a></u>
<b>RefSeq Size:</b>	3692 bp
<b>RefSeq ORF:</b>	2070 bp
<b>Locus ID:</b>	84532
<b>UniProt ID:</b>	<u><a href="#">Q9NUB1</a></u>
<b>Cytogenetics:</b>	20p11.21
<b>Domains:</b>	AMP-binding
<b>Protein Pathways:</b>	Glycolysis / Gluconeogenesis, Metabolic pathways, Propanoate metabolism, Pyruvate metabolism
<b>MW:</b>	74.9 kDa
<b>Gene Summary:</b>	This gene encodes a mitochondrial acetyl-CoA synthetase enzyme. A similar protein in mice plays an important role in the tricarboxylic acid cycle by catalyzing the conversion of acetate to acetyl CoA. Alternatively spliced transcript variants encoding multiple isoforms have been observed for this gene. [provided by RefSeq, Nov 2011]

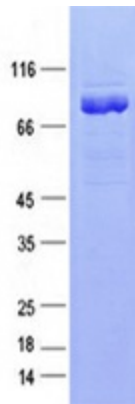
### Product images:



Circular map for RC206311



Western blot validation of overexpression lysate (Cat# [LY410078]) using anti-DDK antibody (Cat# [TA50011-100]). Left: Cell lysates from untransfected HEK293T cells; Right: Cell lysates from HEK293T cells transfected with RC206311 using transfection reagent MegaTran 2.0 (Cat# [TT210002]).



Coomassie blue staining of purified ACSS1 protein (Cat# [TP306311]). The protein was produced from HEK293T cells transfected with ACSS1 cDNA clone (Cat# RC206311) using MegaTran 2.0 (Cat# [TT210002]).