

Product datasheet for **RC206310**

RHOBTB1 (NM_014836) Human Tagged ORF Clone

Product data:

Product Type:	Expression Plasmids
Product Name:	RHOBTB1 (NM_014836) Human Tagged ORF Clone
Tag:	Myc-DDK
Symbol:	RHOBTB1
Mammalian Cell Selection:	Neomycin
Vector:	pCMV6-Entry (PS100001)
E. coli Selection:	Kanamycin (25 ug/mL)



[View online »](#)

ORF Nucleotide
Sequence:

>RC206310 ORF sequence
Red=Cloning site Blue=ORF Green=Tags(s)

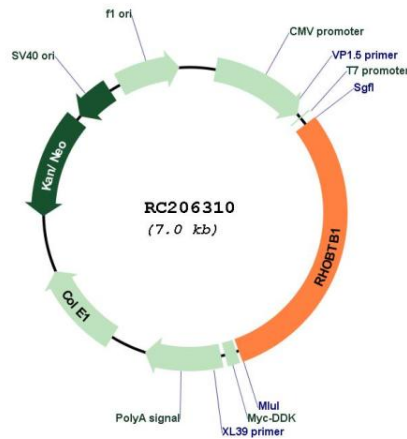
TTTTGTAATACGACTCACTATAGGGCGGCCGGAATTCGTCGACTGGATCCGGTACCGAGGAGATCTGCC
GCCGCGATCGCC

ATGGACGCTGACATGGACTACGAAAGACCAACGTTGAAACTATCAAATGTGTGGTCGTGGGTGACAATG
CGTGGGGAAGACGCGCTTGATCTGTGCCAGGGGTGCAACACCACACTCACGCAGTATCAGCTGCTGGC
CACCCACGTGCCAACAGTGTGGGCGATTACCAGTACCGCGTGTGCCAGGAGGTCTTGGAGCGTTCTCGG
GATGTTGTTGATGAAGTGAAGTGTCTCTCAGGCTTTGGGATACTTTTGGTGATCATCACAAGACAGAC
GCTTTGCATATGGCAGGTCTGATGTTGTGGTCCTCTGTTTTTCGATTGCTAATCCCAATCCCTAAATCA
TGTGAAAAGCATGTGGTATCCAGAAATCAAGCACTTTTGCCTCGAACACCCGTTATCCTTGTGGGTGC
CAGCTTGATCTCCGCTATGCCGACCTGGAAGCTGTTAATCGAGCCAGGCGCCCGTTAGCAAGGCCATAA
AGAGAGGGGATATTTGCCCCAGAAAAGGCCGAGAGGTAGCAAAGGAACTTGGCTTACCATACTATGA
AACAAAGCGTGTGGACAGTTTGGTATCAAGGATGTGTTTGACAATGCAATCCGAGCAGCGCTGATTTC
CGCAGGCACCTGCAATTCGAAAATCCACCTAAAGAAAGTCCAGAAACCTTTACTTCAGGCACCCCTCC
TACCTCCAAAAGCCCTCCACCGGTATCAAAATTCAGAGTGTCTTCCATGGGGACAAATGAAGCTGC
CTGTTTACTGGACAATCCTCTATGTGCCGATGTTCTGTTTCATCCTTCAGGACCAGGAACACATCTTTGCA
CATCGAATTTACCTCGCTACCTCTTCTTCCAAATTTATGATCTGTTTTAATGGAATGTGAAGAATCCC
CAAATGGGAGTGAAGGAGCCTGTGAGAAAGAGAAGCAGAGCAGAGATTTCCAGGGGCGGATATTGAGTGT
CGACCCAGAGGAAGAAAGGGAGGAGGGCCCGCTAGGATTCCTCAGGCCAGCAGTGAAGTCTTCAAAC
AAGAGCCTGGTGGAGGCTCTGGGCTGGAAGCCGAGGGTGCAGTTCCTGAGACACAGACTTGGCCGGAT
GGAGTAAGGGTTCAATTGGCATGCACAGGAAATGCAAGTCAACCCATTTCAAAGCGGATGGGGCCCAT
GACTGTGGTCAGGATGGACGCTTCAGTCCAGCCAGGCCCTTTTCGGACCCCTGCTCCAGTTTCTTTATACG
GGACAACCTGGATGAAAAGGAAAAGGATTTGGTGGGCTGGCTCAGATCGCAGAGGTCTCGAGATGTTTCG
ATTTGAGGATGATGGTGGAAAACATCATGAACAAGGAAGCCTTCATGAACCAGGAGATTACGAAAGCCTT
TCACGTAAGGAAAGCCAATCGGATAAAAGAGTGTCTCAGCAAGGGAACGTTCTCGGACGTGACATTTAAA
TTGGACGATGGAGCCATCAGTGCCACAAGCCGCTGCTGATCTGTAGCTGTGAGTGGATGGCAGCCATGT
TCGGGGGGTCATTTGTGGAAAGTGCCAACAGTGAAGTGTATCTCCGAACATAAACAAGATATCAATGCA
AGCAGTATTGGATTATCTCTATACCAAGCAGTTGTCTCCTAACTGGATCTGGACCCGCTGGAATTAATT
GCCTTGCCAAACAGATTTTGCCTGCCACACTTGGTTGCACTTGCAGAACAGCATGCCGTTTCCAGGATTGA
CCAAGCCGCCACGAGTGGCGTGGGCATTGACGGAGAAGTGTCTTACTTGAATTTGGCTCAGTTTCA
CAATGCCACCAGTTGGCCGCTGGTGTGTTGCACCACATCTGCACCAACTACAACAGTGTATGCTCCAAG
TTCCGTAAGGAAATCAAATCAAATCTGCAGACAACCAGGAATACTTCGAGCGGCACCGCTGGCCCCCTG
TGTGGTACCTGAAGGAAGAAGATCACTACCAGCGTGTGAAAAGGGAACGAGAGAAGGAAGATATTGCACT
AAATAAGCATCGCTCAAGACGAAAGTGGTGCTTCTGGAATTCATCTCCAGCAGTGGCC

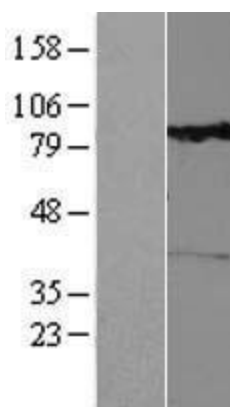
ACGCGTACGCGGCCGCTCGAGCAGAACTCATCTCAGAAGAGGATCTGGCAGCAAATGATATCCTGGATT
ACAAGGATGACGACGATAAGGTTTAA

Components:	The ORF clone is ion-exchange column purified and shipped in a 2D barcoded Matrix tube containing 10ug of transfection-ready, dried plasmid DNA (reconstitute with 100 ul of water).
Reconstitution Method:	<ol style="list-style-type: none"> 1. Centrifuge at 5,000xg for 5min. 2. Carefully open the tube and add 100ul of sterile water to dissolve the DNA. 3. Close the tube and incubate for 10 minutes at room temperature. 4. Briefly vortex the tube and then do a quick spin (less than 5000xg) to concentrate the liquid at the bottom. 5. Store the suspended plasmid at -20°C. The DNA is stable for at least one year from date of shipping when stored at -20°C.
RefSeq:	<u>NM_014836.5</u>
RefSeq Size:	4515 bp
RefSeq ORF:	2091 bp
Locus ID:	9886
UniProt ID:	<u>O94844</u>
Cytogenetics:	10q21.2
MW:	79.4 kDa
Gene Summary:	The protein encoded by this gene belongs to the Rho family of the small GTPase superfamily. It contains a GTPase domain, a proline-rich region, a tandem of 2 BTB (broad complex, tramtrack, and bric-a-brac) domains, and a conserved C-terminal region. The protein plays a role in small GTPase-mediated signal transduction and the organization of the actin filament system. Alternate splicing results in multiple transcript variants. [provided by RefSeq, Dec 2008]

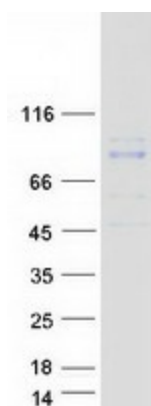
Product images:



Circular map for RC206310



Western blot validation of overexpression lysate (Cat# [LY414991]) using anti-DDK antibody (Cat# [TA50011-100]). Left: Cell lysates from untransfected HEK293T cells; Right: Cell lysates from HEK293T cells transfected with RC206310 using transfection reagent MegaTran 2.0 (Cat# [TT210002]).



Coomassie blue staining of purified RHOBTB1 protein (Cat# [TP306310]). The protein was produced from HEK293T cells transfected with RHOBTB1 cDNA clone (Cat# RC206310) using MegaTran 2.0 (Cat# [TT210002]).