

## Product datasheet for **RC206307**

### **GABA A Receptor gamma 1 (GABRG1) (NM\_173536) Human Tagged ORF Clone**

#### **Product data:**

Product Type:	Expression Plasmids
Product Name:	GABA A Receptor gamma 1 (GABRG1) (NM_173536) Human Tagged ORF Clone
Tag:	Myc-DDK
Symbol:	GABA A Receptor gamma 1
Mammalian Cell Selection:	Neomycin
Vector:	pCMV6-Entry (PS100001)
E. coli Selection:	Kanamycin (25 ug/mL)



[View online »](#)

**ORF Nucleotide Sequence:**

>RC206307 representing NM\_173536  
 Red=Cloning site Blue=ORF Green=Tags(s)

TTTTGTAATACGACTCACTATAGGGCGGCCGGAATTCGTCGACTGGATCCGGTACCGAGGAGATCTGCC  
 GCC**CGCATCGCC**

ATGGGTCCTTTGAAAGCTTTTCTCTTCCCTTTTCTTCTGCGGAGTCAAAGTAGAGGGGTGAGGTTGG  
 TCTTCTTGTTACTGACCTGCATTTGGGAACTGTGTTGATAAGGCAGATGATGAAGATGATGAGGATTT  
 AACGGTGAACAAAACCTGGGTCTTGCCCCAAAATTCATGAAGGAGATATCACACAAATTCGAATTCA  
 TTGCTTCAAGGCTATGACAATAAACTTCGTCCAGATATAGGAGTGAGGCCACAGTAATTGAAACTGATG  
 TTTATGTAACAGCATTGGACCAGTTGATCCAATTAATATGGAATATAACAATAGATATAATTTTTGCCCA  
 AACCTGGTTTGACAGTCGTTAAAATTCATAGTACCATGAAAGTGCTTATGCTTAACAGTAATATGGTT  
 GGAAAAATTTGGATTCTGACACTTTCTCAGAACTCAAGAAAATCTGATGCTCACTGGATAACAACCTC  
 TAATCGTCTGCTCGAATTTGGAATGATGGACGAGTTCTGTATACTCTAAGATTGACAATTAATGCAGA  
 ATGTTATCTTCAGCTTCATAACTTTCCCATGGATGAACATTCCTGTCCACTGGAATTTTCAAGCTATGGA  
 TACCCTAAAAATGAAATTGAGTATAAGTGGAAAAAGCCCTCCGTAGAAGTGGCTGATCCTAAATACTGGA  
 GATTATATCAGTTTGCAATTTGTAGGGTTACGGAACCACTGAAATCACTCACACGATCTCTGGGGATTA  
 TGTTATCACGACAATTTTTTTGACCTGAGCAGAAGAATGGGATATTTCACTATTCAGACCTACATTCCA  
 TGCATTCTGACAGTTGTTCTTTCTGGGTGCTTTTTGGATCAATAAAGATGCAGTGCCTGCAAGAACAT  
 CGTTGGGTATCACTACAGTTCTGACTATGACAACCCTGAGTACAATTGCCAGGAAGTCTTTACCTAAGGT  
 TTCTTATGTGACTGCGATGGATCTTTTGTCTGTTTGTTCATTTTTGTTTTGCAGCCTTGATGGAA  
 TATGGAACCTGCATTATTTACCAGCAACCAAAAAGGAAAGACTGCTACTAAAGACAGAAAGCTAAAAA  
 ATAAAGCCTCGATGACTCCTGGTCTCCATCCTGGATCCACTCTGATTCCAATGAATAATTTCTGTGCC  
 GCAAGAAGATGATTATGAGTATCAGTGTGGAGGGCAAAGATTGTGCCAGCTTCTCTGTTGCTTTGAA  
 GACTGCAGAACAGGATCTTGAGGGAAGGAAGGATACACATACGCATTGCCAAAATTGACTCTTATTCTA  
 GAATATTTTTCCAACCGCTTTTGCCTGTTCACTTGGTTTATTGGGTTGGCTATCTTACTTA

**ACGCGT**ACGCGGCCGCTCGAGCAGAACTCATCTCAGAAGAGGATCTGGCAGCAAATGATATCTGGATT  
 ACAAGGATGACGACGATAAGGTTTAA

**Protein Sequence:**

>RC206307 representing NM\_173536  
 Red=Cloning site Green=Tags(s)

MGPLKAFLESPFLLRSQSRGVRLVFLLLTLHLGNCVDKADDEDLTVNKTWVLAPKIHEDITQILNS  
 LLQGYDNKLRPDIGVRPTVIETDYYVNSIGPVDPINMEYIDIIIFAQTFWDSRLKFNSTMKVLMLNSNMV  
 GKIWIPTFFRNSRKSADHWITTPNRLRIWNGRVLTLRLTINAECYLQLHNFPMDEHSCPLEFSSYG  
 YPKNEIEYKWKPSVEVADPKYWRLYQFAFVGLRNSTEITHTISGDYVITTIFFDLRRMGYFTIQTYIP  
 CILTVVLSWVSWINKDAVPARTSLGITTVLMTTLSTIARKSLPKVSYVTAMDLFVSVCFIFVFAALME  
 YGTLHYFTSNQKGTATKDRKLNKASMTPLHPGSTLIPMNNISVPQEDDYEQCLEGKDCASFFCCFE  
 DCRTGSWREGRIHIRIAKIDSYSRIFFPTAFALFNLVYVWVGYLYL

**TR**TRPLEQKLISEEDLAANDILDYKDDDDKV

**Chromatograms:**

[https://cdn.origene.com/chromatograms/mg2437\\_d12.zip](https://cdn.origene.com/chromatograms/mg2437_d12.zip)

**Restriction Sites:**

SgfI-MluI

**Cloning Scheme:**


**ACCN:** NM\_173536

**ORF Size:** 1395 bp

**OTI Disclaimer:** The molecular sequence of this clone aligns with the gene accession number as a point of reference only. However, individual transcript sequences of the same gene can differ through naturally occurring variations (e.g. polymorphisms), each with its own valid existence. This clone is substantially in agreement with the reference, but a complete review of all prevailing variants is recommended prior to use. [More info](#)

**OTI Annotation:** This clone was engineered to express the complete ORF with an expression tag. Expression varies depending on the nature of the gene.

**Components:** The ORF clone is ion-exchange column purified and shipped in a 2D barcoded Matrix tube containing 10ug of transfection-ready, dried plasmid DNA (reconstitute with 100 ul of water).

**Reconstitution Method:**

1. Centrifuge at 5,000xg for 5min.
2. Carefully open the tube and add 100ul of sterile water to dissolve the DNA.
3. Close the tube and incubate for 10 minutes at room temperature.
4. Briefly vortex the tube and then do a quick spin (less than 5000xg) to concentrate the liquid at the bottom.
5. Store the suspended plasmid at -20°C. The DNA is stable for at least one year from date of shipping when stored at -20°C.

**RefSeq:** [NM\\_173536.4](#)

**RefSeq Size:** 6769 bp

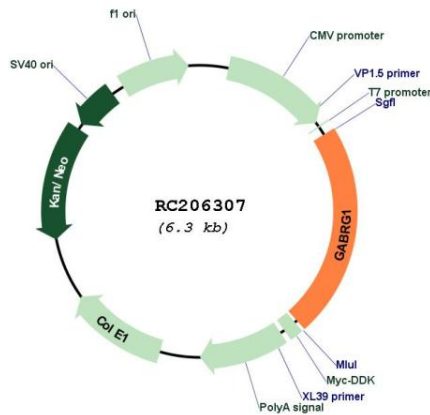
**RefSeq ORF:** 1398 bp

**Locus ID:** 2565

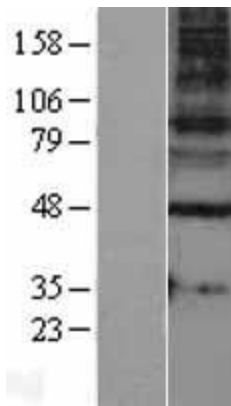
**UniProt ID:** [Q8N1C3](#)

**Cytogenetics:** 4p12  
**Protein Families:** Druggable Genome, Ion Channels: Cys-loop Receptors, Transmembrane  
**Protein Pathways:** Neuroactive ligand-receptor interaction  
**MW:** 53.4 kDa  
**Gene Summary:** The protein encoded by this gene belongs to the ligand-gated ionic channel family. It is an integral membrane protein and plays an important role in inhibiting neurotransmission by binding to the benzodiazepine receptor and opening an integral chloride channel. This gene is clustered with three other family members on chromosome 4. [provided by RefSeq, Jul 2008]

**Product images:**



Circular map for RC206307



Western blot validation of overexpression lysate (Cat# [LY403565]) using anti-DDK antibody (Cat# [TA50011-100]). Left: Cell lysates from untransfected HEK293T cells; Right: Cell lysates from HEK293T cells transfected with RC206307 using transfection reagent MegaTran 2.0 (Cat# [TT210002]).