

## Product datasheet for RC206297

### HLF (NM\_002126) Human Tagged ORF Clone

#### Product data:

Product Type:	Expression Plasmids
Product Name:	HLF (NM_002126) Human Tagged ORF Clone
Tag:	Myc-DDK
Symbol:	HLF
Mammalian Cell Selection:	Neomycin
Vector:	pCMV6-Entry (PS100001)
E. coli Selection:	Kanamycin (25 ug/mL)
ORF Nucleotide Sequence:	>RC206297 ORF sequence Red=Cloning site Blue=ORF Green=Tags(s)

TTTTGTAATACGACTCACTATAGGGCGGCCGGAATTCGTCGACTGGATCCGGTACCGAGGAGATCTGCC  
GCC**CGATCGCC**

ATGGAGAAAATGTCCCGACCGCTCCCCCTGAATCCCACCTTTATCCCGCCTCCCTACGGCGTGCTCAGGT  
CCCTGCTGGAGAACCGCTGAAGCTCCCCCTTACCACGAAGACGCATTTAGTAAAGATAAAGACAAGGA  
AAAGAAGCTGGATGATGAGAGTAACAGCCCGACGGTCCCCAGTCGGCATTCTGGGGCTACCTTATGG  
GACAAAACCTTCCCTATGACGGAGATACTTCCAGTTGGAATACATGGACCTGGAGGAGTTTTTGTGTCAG  
AAAATGGCATTCCCCCAGCCCATCTCAGCATGACCACAGCCCTCACCTCCTGGGCTGCAGCCAGCTTC  
CTCGGCTGCCCCCTCGGTATGGACCTCAGCAGCCGGGCCTCTGCACCCCTTACCCTGGCATCCCATCT  
CCGAAGTGTATGCAGAGCCCATCAGACCAGGTCAGCTGTTGCCAGCAAACCGCAATACACCAAGTCCCA  
TTGATCCTGACACCATCCAGGTCCAGTGGGTTATGAGCCAGACCAGCAGATCTTGCCCTTCCAGCAT  
CCCTGGCCAGGAAATGTTTGACCCTCGCAAACGCAAGTTCTCTGAGGAAGAACTGAAGCCACAGCCCATG  
ATCAAGAAAGCTCGAAAGTCTTATCCCTGATGACCTGAAGGATGACAAGTACTGGCAAGGCGCAGAA  
AGAACAACATGGCAGCAAGCGCTCCCGCAGCCCGGAGGCTGAAAGAGAACCAGATCGCCATCCGGGC  
CTCGTTCTGGAGAAGGAGAACTCGGCCCTCCGCCAGGAGGTGGCTGACTTGAGGAAGGAGCTGGGCAA  
TGCAAGAACATACTTGCCAAGTATGAGGCCAGGCACGGGCCCTG

**ACGCGT**ACGCGGCCGCTCGAGCAGAAACTCATCTCAGAAGAGGATCTGGCAGCAAATGATATCCTGGATT  
ACAAGGATGACGACGATAAGGTTTAA



[View online »](#)

**Protein Sequence:** >RC206297 protein sequence  
Red=Cloning site Green=Tags(s)

MEKMSRPLPLNPTFIPPPYGVLRSLLENPLKLPLHHEDAFSKDKDKEKKLDDESNSPTVPQSAFLGPTLW  
 DKTLPYDGDTFQLEYMDLEEFLENGIIPSPSQHDHSPHPPGLQPASSAAPSVM DLSSRASAPLHPGIPS  
 PNCMQSPIRPGQLLPANRNTSPIDPDTIQVPVGYEPDADLALSSIPGQEMFDRPKRFSEEELKPQPM  
 IKKARKVFI PDDLKDDKYWARRRKNMAAKRSDARRLKENQIAIRASFLEKENSALRQEVADLRKELGK  
 CKNILAKYEARHGPL

TRTRPLEQKLISEEDLAANDILDYKDDDDKV

**Chromatograms:** [https://cdn.origene.com/chromatograms/mk6041\\_b06.zip](https://cdn.origene.com/chromatograms/mk6041_b06.zip)

**Restriction Sites:** Sgfl-MluI

**Cloning Scheme:**

Cloning sites used for ORF Shuttling:



\* The last codon before the Stop codon of the ORF

**ACCN:** NM\_002126

**ORF Size:** 885 bp

**OTI Disclaimer:** The molecular sequence of this clone aligns with the gene accession number as a point of reference only. However, individual transcript sequences of the same gene can differ through naturally occurring variations (e.g. polymorphisms), each with its own valid existence. This clone is substantially in agreement with the reference, but a complete review of all prevailing variants is recommended prior to use. [More info](#)

**OTI Annotation:** This clone was engineered to express the complete ORF with an expression tag. Expression varies depending on the nature of the gene.

**Components:** The ORF clone is ion-exchange column purified and shipped in a 2D barcoded Matrix tube containing 10ug of transfection-ready, dried plasmid DNA (reconstitute with 100 ul of water).

**Reconstitution Method:**

1. Centrifuge at 5,000xg for 5min.
2. Carefully open the tube and add 100ul of sterile water to dissolve the DNA.
3. Close the tube and incubate for 10 minutes at room temperature.
4. Briefly vortex the tube and then do a quick spin (less than 5000xg) to concentrate the liquid at the bottom.
5. Store the suspended plasmid at -20°C. The DNA is stable for at least one year from date of shipping when stored at -20°C.

**RefSeq:** [NM\\_002126.5](#)

**RefSeq Size:** 5607 bp

**RefSeq ORF:** 888 bp

**Locus ID:** 3131

**UniProt ID:** [Q16534](#)

**Cytogenetics:** 17q22

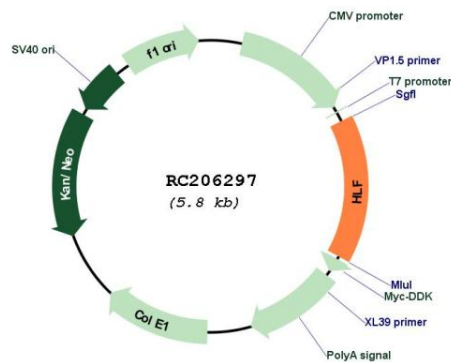
**Domains:** BRLZ

**Protein Families:** Transcription Factors

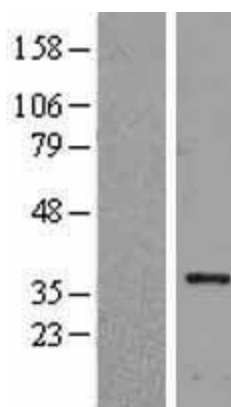
**MW:** 33.2 kDa

**Gene Summary:** This gene encodes a member of the proline and acidic-rich (PAR) protein family, a subset of the bZIP transcription factors. The encoded protein forms homodimers or heterodimers with other PAR family members and binds sequence-specific promoter elements to activate transcription. Chromosomal translocations fusing portions of this gene with the E2A gene cause a subset of childhood B-lineage acute lymphoid leukemias. Alternatively spliced transcript variants have been described, but their biological validity has not been determined. [provided by RefSeq, Jul 2008]

### Product images:



Circular map for RC206297



Western blot validation of overexpression lysate (Cat# [LY400776]) using anti-DDK antibody (Cat# [TA50011-100]). Left: Cell lysates from untransfected HEK293T cells; Right: Cell lysates from HEK293T cells transfected with RC206297 using transfection reagent MegaTran 2.0 (Cat# [TT210002]).