

## Product datasheet for **RC206292**

### Perilipin-1 (PLIN1) (NM\_002666) Human Tagged ORF Clone

#### Product data:

Product Type:	Expression Plasmids
Product Name:	Perilipin-1 (PLIN1) (NM_002666) Human Tagged ORF Clone
Tag:	Myc-DDK
Symbol:	Perilipin-1
Synonyms:	FPLD4; PERI; PLIN
Mammalian Cell Selection:	Neomycin
Vector:	pCMV6-Entry (PS100001)
E. coli Selection:	Kanamycin (25 ug/mL)



[View online »](#)

**ORF Nucleotide Sequence:**

>RC206292 representing NM\_002666  
 Red=Cloning site Blue=ORF Green=Tags(s)

TTTTGTAATACGACTCACTATAGGGCGGCCGGAATTCGTCGACTGGATCCGGTACCGAGGAGATCTGCC  
 GCC**CGGATCGCC**

ATGGCAGTCAACAAAGGCTCACCTTGCTGGATGGAGACCTCCCTGAGCAGGAGAATGTGCTGCAGCGGG  
 TCCTGCAGCTGCCGGTGGTGAGTGGCACCTGCGAATGCTTCCAGAAGACCTACACCAGCACTAAGGAAGC  
 CCACCCACTGGTGGCCTCTGTGTGCAATGCCTATGAGAAGGGCGTGCAGAGCGCCAGTAGCTTGGCTGCC  
 TGGAGCATGGAGCCGGTGGTCCGCAAGGTGTCCACCCAGTTCACAGCTGCCAATGAGCTGGCCTGCCGAG  
 GCTTGGACCACCTGGAGGAAAAGATCCCCGCCCTCCAGTACCCCTGAAAAGATTGCTTCTGAGCTGAA  
 GGACACCATCTCCACCCGCTCCGCAAGTCCAGAAACAGCATCAGCGTCCCATCGCGAGCACTTCAGAC  
 AAGTCTGGGGCGCTTTGGCCGGTGCAGCTTGCCTGGGGGTGCCAGAGACTGCGGAATTTG  
 CTGCCAACCTCGAGCTGGCCGACTGGCTTCTGGAGGGCCGACTTGGCCTTGGGCAGCATTGAGAAGT  
 GGTGGAGTACCTCCTCCCTGCAGACAAGGAAGAGTCAGCCCTGCTCCTGGACACCAGCAAGCCAGGAG  
 TCTCCAAAGGCCAAGCCAAGCCTTTGAGCAGGGTTGGGGCTCTGACCAACCCCTCTCTCGATACCCG  
 TGACAGACCATGGCCCGGCCCTGGAGCAGGGCCACACAGTGGCCATGTGGATCCCAGGCGTGGTGCCCT  
 GAGCAGCTGGCCAGTGGGGTGCCTCAGTGGCCATGCAGGCGGTGCCCGCGGAGGAGCGAAGTGCAG  
 GTACCCTGGTGCACAGCCTCGCAGCCGCCAGGAGGAGGATCATGAGGACCAGACAGACACGGAGGGAG  
 AGGACACGGAGGAGGAGGAAGAATTGGAGACTGAGGAGAAACAAGTTCAGTGAAGTGCAGCCCTGCCAGG  
 CCCTCGAGGCTCCTGGTGGTGTGGCAGTGCAGAGGAGGAGGAGGAGGAGGAGGAGGAGGAGGAGGAG  
 ACATGGCACCTGCAGCTGTGCTGGCAGTGGCAGGGAGGAGGAGGAGGAGGAGGAGGAGGAGGAGGAG  
 CCTCAACCAAGGGGAGGGCCATGCTCCCTATCAGATGCCCTGAAGGGCGTTACTGACAACCTGGTGGAC  
 AGTGGTGCATTACGTGCCGCTCCCAGGCTGTCGCTGATGGAGCCCGAGAGCGAATTCGGGACATCGAC  
 AACCCACAGCCGAGGTGCAGCGCCGGGAGGCGAGCGCAGAGCGTCTGGGGCGCCGTCGCCCGGCCGG  
 AGCCCGCCCGCGCTCTCGCACAGCCCGCCGCGAGCCTGCGCAGCGCGCAGAGCCCGCGCGCCCGCGG  
 CCCGGGCTGGAGGACGAAGTCGCCACGCCCGCAGCGCCCGCGCCCGGGCTTCCCGCCGTGCCCGCGAG  
 AAGCCAAAGCGCAGGGTGCAGCGACGCTTCTCCGGCCAGCGTCATGGAGCCCATCTGGGCCGACGC  
 ATTACAGCCAGCTGCGCAAGAAGAGC

**ACGCGT**ACGCGGCCGCTCGAGCAGAACTCATCTCAGAAGAGGATCTGGCAGCAAATGATATCCTGGATT  
 ACAAGGATGACGACGATAAGGTTTAA

**Protein Sequence:**

>RC206292 representing NM\_002666  
 Red=Cloning site Green=Tags(s)

MAV NKGL TLL DGL PEQENVL QRVLQL PVVSGTCECFQKTYTSTKEAHLVASVCNAYEKGVQSASSLAA  
 WMEPVVRRLLSTQFTAANELACRGLDHLEEKIPALQYPPEKIASLKDITSTRLSARNSISVPIASTSD  
 KVLGAALAGCELAWGVARDTAEFAANTRAGRLASGGADLALGSIKVEYLLPADKEESAPAPGHQQAQE  
 SPKAKPSLLSRVGALTNL SRYTVQTMARALEQGHTVAMWIPGVVPLSSLAQWGASVAMQAVSRRRSEVR  
 VPWLHSLAAAQEEHDHEDQTDTEGEDTEEEEELETEENKFSEVAALPGPRGLLGGVAHTLQKTLQTTISAV  
 TWAPAAVLGMAGRVLHLTPAPAVSSTKGRAMSLSDALKGVTDNVVDTVVHYVPLPRLSLMEPESEFRDID  
 NPPAEVERREAERRASGAPSEPEPAPRLAQPRRSLRSAQSPGAPPGLEDEVATPAAPRPGFPAVPRE  
 KPKRRVSDSFFRPSVMEPILGRTHYSQLRKKS

**TRTRPLEQKLI**SEEDLAANDILDYKDDDDKV

**Chromatograms:**

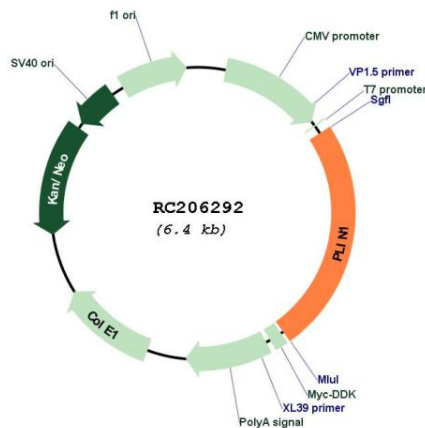
[https://cdn.origene.com/chromatograms/mg3818\\_d05.zip](https://cdn.origene.com/chromatograms/mg3818_d05.zip)

**Restriction Sites:**

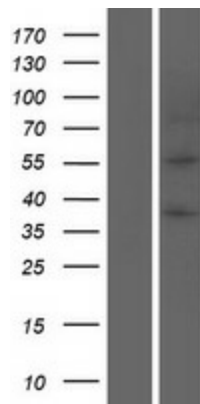
Sgfl-MluI



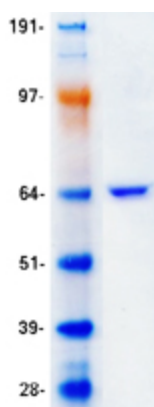
<b>Domains:</b>	perilipin
<b>Protein Families:</b>	Druggable Genome
<b>Protein Pathways:</b>	PPAR signaling pathway
<b>MW:</b>	55.8 kDa
<b>Gene Summary:</b>	The protein encoded by this gene coats lipid storage droplets in adipocytes, thereby protecting them until they can be broken down by hormone-sensitive lipase. The encoded protein is the major cAMP-dependent protein kinase substrate in adipocytes and, when unphosphorylated, may play a role in the inhibition of lipolysis. Alternatively spliced transcript variants varying in the 5' UTR, but encoding the same protein, have been found for this gene. [provided by RefSeq, Feb 2009]

**Product images:**


Circular map for RC206292



Western blot validation of overexpression lysate (Cat# [LY428814]) using anti-DDK antibody (Cat# [TA50011-100]). Left: Cell lysates from untransfected HEK293T cells; Right: Cell lysates from HEK293T cells transfected with [RC226949] using transfection reagent MegaTran 2.0 (Cat# [TT210002]).



Coomassie blue staining of purified PLIN1 protein (Cat# [TP306292]). The protein was produced from HEK293T cells transfected with PLIN1 cDNA clone (Cat# RC206292) using MegaTran 2.0 (Cat# [TT210002]).