

## Product datasheet for **RC206291**

### PLS1 (NM\_002670) Human Tagged ORF Clone

#### Product data:

Product Type:	Expression Plasmids
Product Name:	PLS1 (NM_002670) Human Tagged ORF Clone
Tag:	Myc-DDK
Symbol:	PLS1
Synonyms:	DFNA76
Mammalian Cell Selection:	Neomycin
Vector:	pCMV6-Entry (PS100001)
E. coli Selection:	Kanamycin (25 ug/mL)



[View online »](#)

**ORF Nucleotide Sequence:**

>RC206291 ORF sequence  
 Red=Cloning site Blue=ORF Green=Tags(s)

TTTTGTAATACGACTCACTATAGGGCGGCCGGAATTCGTCGACTGGATCCGGTACCGAGGAGATCTGCC  
 GCCCGCATCGCC

ATGAAAAACAGTACTACTACCATTCTCGGGAGGAGCTTGAAGAACTACAAGAGCATTAAATAAATAG  
 ATATTGACAATAGTGGGTATGTCAGTGACTATGAACTTCAAGACCTGTTTAAGGAAGCAAGCCTTCTCT  
 GCCTGGCTACAAGGTGCGCGAGATTGTGGAGAAAATTCTATCAGTTGCTGACAGCAACAAAGATGGCAAA  
 ATCAGTTTTGAAGAGTTTGTGCTACTAATGCAAGAATTAAGCAAGATATCAGCAAAACATTCCGAA  
 AAATAATTAACAAGAGGGAAGGGATTACTGCTATTGGAGGAACTCAACTATTTCCAGTGAGGGCACACA  
 GCATTCTACTCAGAGGAAGAAAAGTGGCTTTTGTAACTGGATAAACAAAGCCCTGGAGAATGACCT  
 GACTGTAAGCATTTATACCCATGAATCCCAATGATGATAGTCTTTTCAAGTCACTTGCAGATGGCATCC  
 TTCTTTGCAAAAATGATCAACTTATCTGAACCAGATACAATTGATGAAAGAGCCATCAATAAGAAAAAGCT  
 CACGCCATTCACTATTTCTGAAAATTTAAACCTAGCTCTGAATTCTGCCTCAGCCATTGGTTGTACAGTG  
 GTC AACATTGGTGCATCAGATCTCAAAGAAGGAAAACCTCACTTGGTCTTGGGACTTCTCTGGCAGATCA  
 TCAAAGTTGGCCTTTTTGCTGATATTGAGATTTCCAGGAATGAAGCTCTGATTGCATTGTTAAATGAAGG  
 TGAGGAACTAGAGGAGCTGATGAAGCTTCTCCCGAGGAATTACTGCTGCGATGGGTGAAGTACCATCTG  
 ACCAATGCAGGATGGCATACCATCAGCAACTTCAGCCAAGACATTAAGGACTCGAGAGCCTATTTTCATC  
 TGCTTAATCAGATTGCCCTAAAGGTGGGAAGATGGACCTGCCATTGCCATTGACCTTTTCAGGAATTA  
 TGAGACAAATGACCTGAAGCGTGTGGACTCATGCTTCAAGAAGCAGATAAACTGGGCTGCAACAGTTT  
 GTTACTCCTGCAGATGTGGTTTCAGGCAATCCTAACTTAATTTAGCTTTTGTAGCTAATTTGTTTAAACA  
 CATACCCATGCCGCACAAGCCGAATAATAATGACATCGATATGAATTTACTGGAAGGAGAGCAAGGA  
 AGAGAGAACATTTGGAAGTGGATGAATTCCTTGGGAGTCAACCCATACATTAATCATTTGTACAGTGAC  
 CTTGCAGATGCTTTAGTGATCTTTCAGCTCTATGAGATGATCCGAGTGCCAGTCAACTGGAGACATGTCA  
 ACAAACCTCCTTATCCTGCCCTTGGAGGGAACATGAAGAAGATTGAAAAGTGAAGTATGCAGTGGAACT  
 TGGGAAGAACAAGGCCAAATTCTCCTTGGTTGGCATTGCTGGGCAGGACCTAAATGAAGGGAATTCAACA  
 CTTACCCTGGCATTGGTATGGCAGCTGATGAGAAGGTACACATTGAATGTGTTATCGGATCTTGGAGAGG  
 GTGAAAAAGTAAATGATGAAATTATAATTAATGGGTCAATCAGACTCTAAAAGTGCAACAAAAAGAC  
 TTCTATTTCCAGCTTCAAGGATAAATCTATAAGCACAAAGTTACCTGCTCAGATTTAATAGATGCCATT  
 GCACCAATGCAGTTTCGTCAGAAATGATCAGGAGAGAAAACCTATCTGATGAGGACAAGCTGAACAAATG  
 CTAATACGCCATTTAGTTGCTCGAAAGATCGGTGCCCGGATATATGCATTACCTGATGACCTCGTAGA  
 AGTGAAACCAAGATGGTTATGACGGTGTTCATGCTTAATGGGAAAAGGACTGAACAGAATAAAA

ACGCGTACGCGGCCGCTCGAGCAGAACTCATCTCAGAAGAGGATCTGGCAGCAATGATATCCTGGATT  
 ACAAGGATGACGACGATAAGGTTTAA

**Protein Sequence:**

>RC206291 protein sequence  
 Red=Cloning site Green=Tags(s)

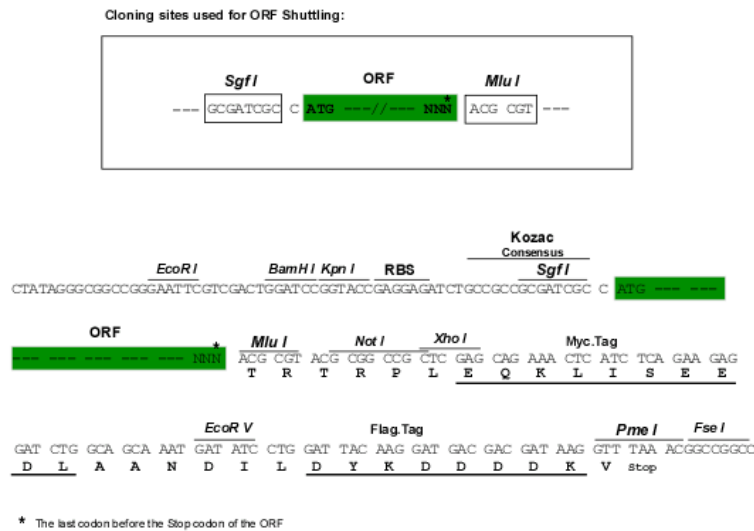
MENSTTTISRLEEELQEAFNKIDIDNSGYVSDYELQDLFKEASLPLPGYKVIIVEKILSVADSNKDGK  
 ISFEFVSLMQELKSKDISKTRFKIINKREGITAIIGGTSTISSEGTQHSYSEEEKVAFVNWINKALENDP  
 DCKHLIPMNPNDDSLFKSLADGILLCKMINLSEPTIDERAINKKKLTPFTISENLNLALNSASAI GCTV  
 VNI GASDLKEGPHLVGLLWQI IKVGLFADIEISRNEALIALNEGEELEELMKLSPEELLLRWVNYHL  
 TNAGWHTISNFSQDIKDSRAYFHLLNQIAPKGGEDGPAIAIDL SGINETNDLKRAGLMLQEADKLGCKQF  
 VTPADV VSGNPKLN LAFVANL FNTYPCLHKPNNNDIDMNLLEGESKEERTFRNWMMNSLGVNPIINHLYSD  
 LADALVIFQLYEMIRVPVNRHV NKPYPALGGNMKKIENCNYAVELGKNKAKFSLVGIAGQDLNEGNST  
 LTLALVWQLMRRYTLNVLSDLGEGEKVND EIIKWNQTLKSANKKTSISSFKDKSISTSLPVLDLIDAI  
 APNAVRQEMIRRENLSDEDKLNNAKYAISVARKIGARIYALPDDLVEVKPKMVMVFACL MGKGLNRK

TRTRPLEQKLI SEEDLAANDILDYKDDDDKV

**Chromatograms:** [https://cdn.origene.com/chromatograms/mk6320\\_h09.zip](https://cdn.origene.com/chromatograms/mk6320_h09.zip)

**Restriction Sites:** SgfI-MluI

**Cloning Scheme:**



**ACCN:** NM\_002670

**ORF Size:** 1887 bp

**OTI Disclaimer:** The molecular sequence of this clone aligns with the gene accession number as a point of reference only. However, individual transcript sequences of the same gene can differ through naturally occurring variations (e.g. polymorphisms), each with its own valid existence. This clone is substantially in agreement with the reference, but a complete review of all prevailing variants is recommended prior to use. [More info](#)

**OTI Annotation:** This clone was engineered to express the complete ORF with an expression tag. Expression varies depending on the nature of the gene.

**Components:** The ORF clone is ion-exchange column purified and shipped in a 2D barcoded Matrix tube containing 10ug of transfection-ready, dried plasmid DNA (reconstitute with 100 ul of water).

- Reconstitution Method:**
1. Centrifuge at 5,000xg for 5min.
  2. Carefully open the tube and add 100ul of sterile water to dissolve the DNA.
  3. Close the tube and incubate for 10 minutes at room temperature.
  4. Briefly vortex the tube and then do a quick spin (less than 5000xg) to concentrate the liquid at the bottom.
  5. Store the suspended plasmid at -20°C. The DNA is stable for at least one year from date of shipping when stored at -20°C.

**RefSeq:** [NM\\_002670.3](#)

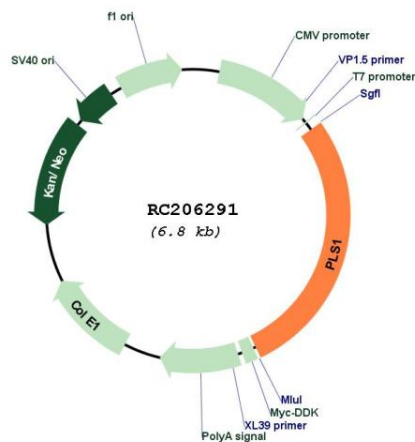
**RefSeq Size:** 3736 bp

**RefSeq ORF:** 1890 bp

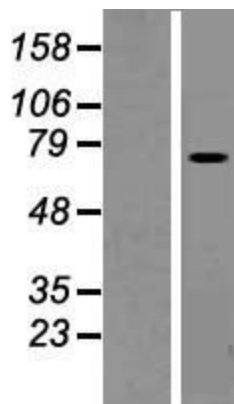
**Locus ID:** 5357  
**UniProt ID:** [Q14651](#)  
**Cytogenetics:** 3q23  
**Domains:** CH, EFh  
**MW:** 70.3 kDa

**Gene Summary:** Plastins are a family of actin-binding proteins that are conserved throughout eukaryote evolution and expressed in most tissues of higher eukaryotes. In humans, two ubiquitous plastin isoforms (L and T) have been identified. The protein encoded by this gene is a third distinct plastin isoform, which is specifically expressed at high levels in the small intestine. Alternatively spliced transcript variants varying in the 5' UTR, but encoding the same protein, have been found for this gene. A pseudogene of this gene is found on chromosome 11. [provided by RefSeq, Feb 2010]

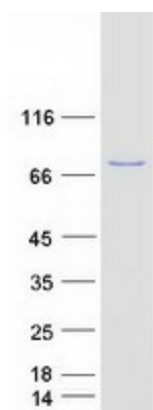
### Product images:



Circular map for RC206291



Western blot validation of overexpression lysate (Cat# [LY428822]) using anti-DDK antibody (Cat# [TA50011-100]). Left: Cell lysates from untransfected HEK293T cells; Right: Cell lysates from HEK293T cells transfected with [RC227933] using transfection reagent MegaTran 2.0 (Cat# [TT210002]).



Coomassie blue staining of purified PLS1 protein (Cat# [TP306291]). The protein was produced from HEK293T cells transfected with PLS1 cDNA clone (Cat# RC206291) using MegaTran 2.0 (Cat# [TT210002]).