

Product datasheet for **RC206290**

SLC6A1 (NM_003042) Human Tagged ORF Clone

Product data:

Product Type:	Expression Plasmids
Product Name:	SLC6A1 (NM_003042) Human Tagged ORF Clone
Tag:	Myc-DDK
Symbol:	SLC6A1
Synonyms:	GABATHG; GABATR; GAT1; MAE
Mammalian Cell Selection:	Neomycin
Vector:	pCMV6-Entry (PS100001)
E. coli Selection:	Kanamycin (25 ug/mL)



[View online »](#)

ORF Nucleotide Sequence:

>RC206290 representing NM_003042
 Red=Cloning site Blue=ORF Green=Tags(s)

TTTTGTAATACGACTCACTATAGGGCGGCCGGGAATTCGTCGACTGGATCCGGTACCGAGGAGATCTGCC
 GCC**CGGATCGCC**

ATGGCGACCAACGGCAGCAAGGTGGCCGACGGGCAGATCTCCACCGAGGTCAGCGAGGCCCTGTGGCCA
 ATGACAAGCCAAAACCTTGGTGGTCAAGGTGCAGAAGAAGGCGGCAGACCTCCCGACCGGGACACGTG
 GAAGGGCCGCTTCGACTTCTCATGTCTGTGTGGCTATGCCATCGGCCTGGGCAACGTCTGGAGGTTCC
 CCCTATCTCTGCGGAAAAATGGTGGGGGAGCCTTCTGATCCCTATTTCTGACACTCATCTTTGCGG
 GGGTCCCCTCTTCTGTGGAGTGTCCCTGGGCCAGTACACCTCCATCGGGGGCTAGGGGTATGGAA
 GCTGGCTCTATGTTCAAGGGCGTGGCCCTTGGGCTGCTGTGCTATCATTCTGGCTGAACATCTACTAC
 ATCGTCATCATCTCTGGGCCATTTACTACCTGTACAACCTCTTACCACGACACTGCCGTGAAACAGT
 GCGACAACCCCTGGAACACAGACCGCTGCTTCTCAACTACAGCATGGTCAACACTACCAACATGACCAG
 CGCTGTGGTGGAGTTCTGGGAGCGCAACATGCATCAGATGACGGACGGGCTGGATAAGCCAGGTCAGATC
 CGCTGGCCACTGGCCATCACGCTGGCCATCGCCTGGATCCTTGTGATTTCTGTATCTGGAAGGGTGTG
 GCTGGACTGGAAGGTGGTCTACTTTTCAGCCACATACCCCTACATCATGCTGATCATCCTGTTCTTCCG
 TGGAGTGACGCTGCCCGGGCCAAGGAGGGCATCCTCTTCTACATCACACCCAACCTCCGCAAGCTGTCT
 GACTCCGAGGTGTGGCTGGATGCGGCAACCCAGATCTTCTTCTCATACGGGCTGGGCTGGGGTCCCTGA
 TCGCTCTCGGGAGCTACAACCTTTCCACAACAATGTCTACAGGGACTCCATCATCGTCTGCTGCATCAA
 TTCGTGCACCAGCATGTTTCGAGGATTCGTCATCTTCCATCGTGGGCTTCATGGCCATGTACAGAA
 AGGTCCATTGTGATGTGGCGGCTCAGGCCCGGGCTGGCGTTCCTGGCATAACCCAGAGCGGTGACCC
 AGCTGCCATCTCCCCTCTGGGCCATCCTCTTCTTCCATGCTGTTGATGCTGGGCATGACAGCCA
 GTTCTGCACTGTGGAGGGCTTCATCACAGCCCTGGTGGATGAGTACCCAGGCTCCTCCGAACCCGAGA
 GAGCTCTTATTGCTGCTGTCTGCATCATCTCCTACCTGATCGGTCTCTTAACATCACTCAGGGGGTA
 TTTATGTCTTCAAACCTTTGACTACTACTCTGCCAGTGGCATGAGCCTGCTGTTCTCTGTTCTTTGA
 ATGTGTCTCTATTTCTGGTTTTACGGTGTCAACCGATTCTATGACAATATCCAAGAGATGGTTGGATCC
 AGGCCCTGCATCTGGTGGAACTCTGCTGGTCTTTCTTCCACCAATCATTGTGGCGGGCTGTTCAATTT
 TCAGTGTGTGCAGATGACGCAACTCACCATGGGAACTATGTTTTCCCAAGTGGGGCCAGGGTGTGGG
 CTGGCTGATGGCTCTGTCTTCCATGGTCTCATCCCCGGGTACATGGCCTACATGTTCTCACCTTAAAG
 GGCTCCCTGAAGCAGCGCATCCAAGTCATGGTCCAGCCAGCGAAGACATCGTTCGCCAGAGAATGGTC
 CTGAGCAGCCCCAGGCGGCAGCTCCACCAGCAAGGAGGCTACATC

ACGCGTACGCGGCCGCTCGAGCAGAAACTCATCTCAGAAGAGGATCTGGCAGCAAATGATATCCTGGATT
 ACAAGGATGACGACGATAAGGTTTAA

Protein Sequence:

>RC206290 representing NM_003042
 Red=Cloning site Green=Tags(s)

MATNGSKVADGQISTEVSEAPVANDKPKTLVVKVQKKAADLPDRDTWKGRFDFLMSCVGYAIGLGNVWRF
 PYLCGKNGGGAFLIPYFLTLIFAGVPLFLECSLGGYTSIGGLGVWKLAPMFKGVGLAAAVLSFWLNIYY
 IVIISWAIYYLYNSFTTLPWKQCDNPWNTDRCSNYSMVNTTNTMSAVVEFWERNMHQMTDGLDKPGQI
 RWPLAITLAIWILVYFCIWKGVGWTGKVVYFSATYPYIMLIILFFRGVTLPGAKEGILFYITPNFRKLS
 DSEVWLDAATQIFFSYGLGLGSLIALGSYNSFHNNVYRDSIIVCCINSCTSMFAGFVIFSIVGFMAHVTK
 RSIADVAASGPGLAFLAYPEAVTQLPISPLWAILFFSMLLMLGIDSQFCTVEGFITALVDEYPRLLRNRR
 ELFIAAVCIISYLIIGLSNITQGGIYVFKLFDYYSASGMSLLFLVFFECVSI SWFYGVNRFYDNIQEMVGS
 RPCIWWKLCWSFFTPIIVAGVIFSAVQMTQLTMGNYVFPKWQGVGWLMALESSMVLIPGYMAYMFLTLK
 GSKLQRIQVMVQPSSEDIVRPENGPEQPQAGSSTSKEAYI

TRTRPLEQKLISEEDLAANDILDYKDDDDKV

Chromatograms:

https://cdn.origene.com/chromatograms/mg3975_b06.zip

Restriction Sites: SgfI-MluI

Cloning Scheme:



ACCN: NM_003042

ORF Size: 1797 bp

OTI Disclaimer: The molecular sequence of this clone aligns with the gene accession number as a point of reference only. However, individual transcript sequences of the same gene can differ through naturally occurring variations (e.g. polymorphisms), each with its own valid existence. This clone is substantially in agreement with the reference, but a complete review of all prevailing variants is recommended prior to use. [More info](#)

OTI Annotation: This clone was engineered to express the complete ORF with an expression tag. Expression varies depending on the nature of the gene.

Components: The ORF clone is ion-exchange column purified and shipped in a 2D barcoded Matrix tube containing 10ug of transfection-ready, dried plasmid DNA (reconstitute with 100 ul of water).

- Reconstitution Method:**
1. Centrifuge at 5,000xg for 5min.
 2. Carefully open the tube and add 100ul of sterile water to dissolve the DNA.
 3. Close the tube and incubate for 10 minutes at room temperature.
 4. Briefly vortex the tube and then do a quick spin (less than 5000xg) to concentrate the liquid at the bottom.
 5. Store the suspended plasmid at -20°C. The DNA is stable for at least one year from date of shipping when stored at -20°C.

Note: Plasmids are not sterile. For experiments where strict sterility is required, filtration with 0.22um filter is required.

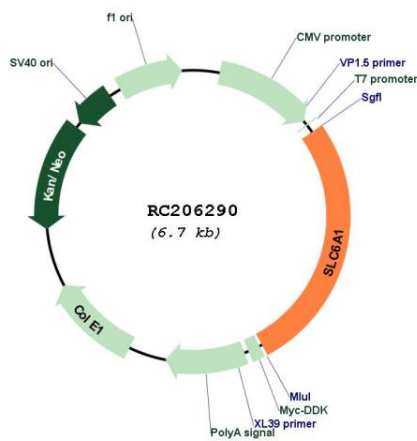
RefSeq: [NM_003042.2](#), [NP_003033.2](#)

RefSeq Size: 4493 bp

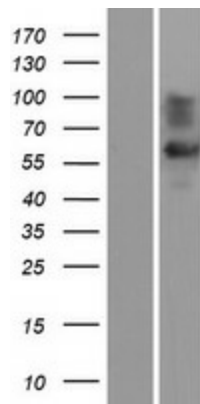
RefSeq ORF: 1800 bp

Locus ID: 6529
UniProt ID: [P30531](#)
Cytogenetics: 3p25.3
Domains: SNF
Protein Families: Druggable Genome, Transmembrane
MW: 66.9 kDa
Gene Summary: The protein encoded by this gene is a gamma-aminobutyric acid (GABA) transporter that localizes to the plasma membrane. The encoded protein removes GABA from the synaptic cleft, restoring it to presynaptic terminals. [provided by RefSeq, Jan 2017]

Product images:



Circular map for RC206290



Western blot validation of overexpression lysate (Cat# [LY418938]) using anti-DDK antibody (Cat# [TA50011-100]). Left: Cell lysates from untransfected HEK293T cells; Right: Cell lysates from HEK293T cells transfected with RC206290 using transfection reagent MegaTran 2.0 (Cat# [TT210002]).