

## Product datasheet for **RC206287**

### ZNF345 (NM\_003419) Human Tagged ORF Clone

#### Product data:

Product Type:	Expression Plasmids
Product Name:	ZNF345 (NM_003419) Human Tagged ORF Clone
Tag:	Myc-DDK
Symbol:	ZNF345
Synonyms:	HZF10
Mammalian Cell Selection:	Neomycin
Vector:	pCMV6-Entry (PS100001)
E. coli Selection:	Kanamycin (25 ug/mL)



[View online »](#)

**ORF Nucleotide Sequence:**

>RC206287 ORF sequence  
 Red=Cloning site Blue=ORF Green=Tags(s)

TTTTGTAATACGACTCACTATAGGGCGGCCGGAATTCGTCGACTGGATCCGGTACCGAGGAGATCTGCC  
 GCC**CGCATCGCC**

ATGAAAAACCTTACAAAACACAGCATTGAGTGTTCAAGTTTCAGAGGTGATTGGGAATGTAAAAACAGT  
 TTGAGAGAAAACAGGGATCTCAGGAAGGACATTTCAAGTAAATGATATTTACTCCTGAAGACATGCCAC  
 TTTCAGTATCCAGCATCAGAGAATTCATACTGATGAGAAAACCTTGAATGTAAGGAATGTGGGAAGGAT  
 TTTAGTTTTGTATCAGTCCTTGTTCGACATCAGCGAATTCATACTGGTGAGAAAACCTTATGAATGCAAAAG  
 AATGTGGCAAGGCCTTTGGTAGTGGTGCAAACCTTGCTTACCATCAAAGAATTCATACTGGTGAGAAGCC  
 TTTTGAATGTAAGAATGTGGGAAGGCCTTTGGTAGTGGCTCAAACCTTACTCACCATCAGAGAATTCAT  
 ACTGGTGAGAAAACCTATGAGTGAAGGAATGTGGGAAGGCCTTAGTTTTGGATCAGGCCTTATTCGAC  
 ATCAGATCATTACAGTGGTGAGAAGCCTTATGAGTGAAGGAATGTGGGAAGTCCTTAGTTTTGAATC  
 AGCCCTTATTCGGCATCAGAGAATTCACACAGGTGAGAAAACCTTATGAATGTATAGATTGGTAAAGCC  
 TTTGGCAGTGGTTCAAACCTTACTCAACATCGGCGGATTCATACTGGTGAGAAAACCTTATGAATGCAAAAG  
 CATGTGGAATGGCCTTAGCAGTGGTTCGGCTTACTCGGCATCAGAGAATTCATACCGGTGAGAAAAC  
 ATATATATGTAATGAATGTGGTAAGGCCTTAGTTTTGGATCAGCCCTTACTCGACATCAAAGAATTCAT  
 ACTGGTGAGAAAACCTTATGTATGTAAGGAATGTGGGAAGGCCTTTAATAGTGGCTCAGATCTCACTCAGC  
 ATCAGAGAATTCACACTGGTGAGAAAACCTATGAGTGAAGGAGTGTGAGAAAACCTTTAGAAGTGGTTC  
 AAAACTTATTCAGCATCAAAGAATGCATACTGGAGAGAAAACCTTATGAATGTAAGGAATGTGGGAAGACC  
 TTTAGTAGTGGTTCAGACCTTACTCAACATCAGAGAATTCATACTGGTGAGAAAACCTTATGAATGTAAGG  
 AATGTGGGAAGGCCTTTGGTAGTGGCTCAAACCTTATCCAACACCAGCTAATCCATACTGGTGAAGACC  
 CTATGAATGTAAGAATGTGGAAAGTCCTTTAGTAGTGGTTCAGCTCTAATCGGCACCAGAGAATACAC  
 ACTGGTGAGAAAACCTATGAATGTAAGGAGTGTGGGAAGGCCTTTTATAGTGGCTCAAGCCTTACTCAGC  
 ATCAGAGAATTCATACAGGTGAGAAAACCTTATGAATGTAAGAATGTGGGAAGGCCTTATGGGAGGGATTC  
 AGAGTTTCAGCAACATAAGAAAAGTCATAATGGTAAGAAAACCTCTGCGAATTGAAAACATAAAAT

**ACGCGT**ACGCGGCCGCTCGAGCAGAAAACCTCATCTCAGAAGAGGATCTGGCAGCAAATGATATCCTGGATT  
 ACAAGGATGACGACGATAAGGTTTAA

**Protein Sequence:**

>RC206287 protein sequence  
 Red=Cloning site Green=Tags(s)

MENLTKHSIECSSFRGDWECKNQFERKQGSQEGHFSEMIFTPEDMPTFSIQHQR IHTDEKLECKECKGKD  
 FSFVSVLVRHQRIHTGEKPYECKECKGAFGSGANLAYHQRIHTGEKPFECKECKGAFGSGSNLTHHQRIH  
 TGEKPYECKECKGAFSFGSGLIRHQI IHSGEKPYECKECKGKSFESALIRHRIHTGEKPYECIDCGKA  
 FSGSNLTQHRIHTGEKPYECKACGMAFSSGSALTRHQRIHTGEKPYICNECGKAFSFGSALTRHQRIH  
 TGEKPYVCKECKGAFNSGSDLTQHRIHTGEKPYECKEKEKAFRSGSKLIQHQMHTGEKPYECKECKGT  
 FSSGSDLTQHRIHTGEKPYECKECKGAFGSGSKLIQHQLIHTGERPYECKECKGKSFSSGSALNRHQRIH  
 TGEKPYECKECKGAFYSGSSLTQHRIHTGEKLYECKNCGKAYGRDSEFQQHKKSHNGKLCLEETIN

**TR**TRPLEQKLI SEEDLAANDILDYKDDDDKV

**Chromatograms:**

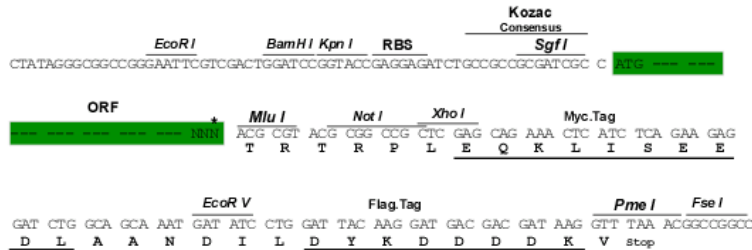
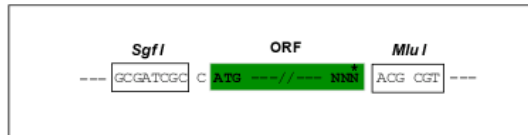
[https://cdn.origene.com/chromatograms/mk6320\\_a07.zip](https://cdn.origene.com/chromatograms/mk6320_a07.zip)

**Restriction Sites:**

Sgfl-MluI

**Cloning Scheme:**

Cloning sites used for ORF Shutting:



\* The last codon before the Stop codon of the ORF

**ACCN:** NM\_003419

**ORF Size:** 1464 bp

**OTI Disclaimer:** The molecular sequence of this clone aligns with the gene accession number as a point of reference only. However, individual transcript sequences of the same gene can differ through naturally occurring variations (e.g. polymorphisms), each with its own valid existence. This clone is substantially in agreement with the reference, but a complete review of all prevailing variants is recommended prior to use. [More info](#)

**OTI Annotation:** This clone was engineered to express the complete ORF with an expression tag. Expression varies depending on the nature of the gene.

**Components:** The ORF clone is ion-exchange column purified and shipped in a 2D barcoded Matrix tube containing 10ug of transfection-ready, dried plasmid DNA (reconstitute with 100 ul of water).

**Reconstitution Method:**

1. Centrifuge at 5,000xg for 5min.
2. Carefully open the tube and add 100ul of sterile water to dissolve the DNA.
3. Close the tube and incubate for 10 minutes at room temperature.
4. Briefly vortex the tube and then do a quick spin (less than 5000xg) to concentrate the liquid at the bottom.
5. Store the suspended plasmid at -20°C. The DNA is stable for at least one year from date of shipping when stored at -20°C.

**RefSeq:** [NM\\_003419.4](#)
**RefSeq Size:** 3132 bp

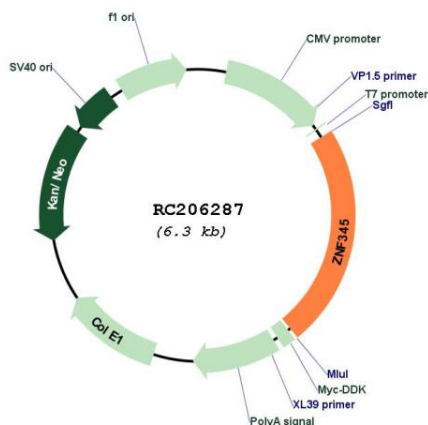
**RefSeq ORF:** 1467 bp

**Locus ID:** 25850

**UniProt ID:** [Q14585](#)
**Cytogenetics:** 19q13.12

**Domains:** zf-C2H2  
**Protein Families:** Transcription Factors  
**MW:** 55.4 kDa  
**Gene Summary:** May be involved in transcriptional regulation.[UniProtKB/Swiss-Prot Function]

**Product images:**



Circular map for RC206287