

Product datasheet for **RC206286**

GABA A Receptor alpha 3 (GABRA3) (NM_000808) Human Tagged ORF Clone

Product data:

Product Type:	Expression Plasmids
Product Name:	GABA A Receptor alpha 3 (GABRA3) (NM_000808) Human Tagged ORF Clone
Tag:	Myc-DDK
Symbol:	GABA A Receptor alpha 3
Mammalian Cell Selection:	Neomycin
Vector:	pCMV6-Entry (PS100001)
E. coli Selection:	Kanamycin (25 ug/mL)



[View online »](#)

ORF Nucleotide Sequence:

>RC206286 representing NM_000808
 Red=Cloning site Blue=ORF Green=Tags(s)

TTTTGTAATACGACTCACTATAGGGCGGCCGGAATTCGTCGACTGGATCCGGTACCGAGGAGATCTGCC
 GCC**GCGATCGCC**

ATGATAATCACACAAACAAGTCACTGTTACATGACCAGCCTTGGGATTCTTTTCCTGATTAATATCTCTC
 CTGAACCACTGGTCAAGGGGAATCAAGACGACAAGAACCCTGGGACTTTGTGAAGCAGGACATTGGCGG
 GCTGTCTCCTAAGCATGCCCCAGATATTCTGATGACAGCACTGACAACATCACTATCTTACCAGAATC
 TTGGATCGTCTTCTGGACGGCTATGACAACCGGCTGCGACCTGGGCTTGGAGATGCAGTACTGAAGTGA
 AGACTGACATCTACGTGACCAGTTTGGCCCTGTGTCAGACACTGACATGGAGTACACTATTGATGTATT
 TTTTCGGCAGACATGGCATGATGAAAGACTGAAATTTGATGGCCCATGAAGATCCTTCCACTGAACAAT
 CTCCTGGTAGTAAGATCTGGACACCGGACACCTTCTCCACAATGGCAAGAAATCAGTGGCTCATAACA
 TGACCACGCCCAACAAGCTGCTCAGATTGGTGGACAACGGAACCCCTCTCTATACAATGAGGTTAA
 CATGCTGAGTGTCCCATGCATTTGGAAGATTTCCCATGGATGTGCATGCCTGCCACTGAAGTTTGG
 AGCTATGCCTATACAACAGCTGAAGTGGTTTATTCTTGGACTCTCGGAAAGAACAATCCGTGGAAGTGG
 CACAGGATGGTTCTCGCTTGAACCAAGTATGACCTTTTGGCCATGTTGTTGGGACAGAGATAATCCGGT
 TAGTACAGGAGAAATGTCGTCATGACAACCCACTTCCATCTCAAGCGAAAAATTGGCTACTTTGTGATC
 CAGACCTACTTGGCATGTATCATGACTGTCACTTCTGTCACAAGTGTCTGTTCTGGCTCAACAGAGAGTCTG
 TTCCTGCCGTACAGTCTTTGGTGTACCACCTGTGCTTACCATGACCACCTTGGATCAGTGCCAGAAA
 TTCCTTACCTAAAGTGGCATATGCGACGGCCATGGACTGGTTCATAGCCGTCTGTTATGCCTTTGTATTT
 TCTGCACTGATTGAATTTGCCACTGTCAACTATTTACCAAGCGGAGTTGGGCTTGGGAAGGCAAGAAGG
 TGCCAGAGGCCCTGGAGATGAAGAAGAAAAACCCAGCAGCCCCAGCAAAGAAAAACCACTACTCTCAA
 CATCGTGGGGACCACCTATCCCATCAACCTGGCCAAGGACACTGAATTTTCCACCATCTCCAAGGGCGCT
 GCTCCAGTGCCTCCTCAACCCCAACAATCATTGCTTCAACCAAGGCCACCTACGTGCAGGACAGCCCGA
 CTGAGACCAAGACCTACAACAGTGTGAGCAAGTTGACAAAATTTCCCGCATCATCTTCTGTGCTCTT
 TGCCATATTCAATCTGGTCTATTGGCCACATATGTCAACCGGGAGTCAGCTATCAAGGGCATGATCCGC
 AAACAG

ACGCGTACGCGGCCGCTCGAGCAGAAACTCATCTCAGAAGAGGATCTGGCAGCAAATGATATCTGGATT
 ACAAGGATGACGACGATAAGGTTTAA

Protein Sequence:

>RC206286 representing NM_000808
 Red=Cloning site Green=Tags(s)

MIITQTSHCYMTSLGILFLINILPGTTGQGESRRQEPGDFVKQDIGGLSPKHAPDIPDDSTDNITIFTRI
 LDRLLDGYDNRLRPLGDAVTEVKTDIYVTSFGPVSDTMEYIDVFFRQTWHERLKFDPKILPLNN
 LLASKIWPDTFFHNGKKSVAHNMTTPNKLLRLVDNGLLYTMRLTIHAECPMHLEDFPMDVHACPLKFG
 SYAYTTAEVVYSWTLGKNKSVEVAQDGSRLNQYDLLGHVVGTEIIRSSTGEYVVMTHFHLKRKIGYFVI
 QTYLPCIMTVILSQVSFNLNRESVPARTVFGVTTVLTMTLSISARNLSPKVAYATAMDWFIIVCYAFVF
 SALIEFATVNYFTKRSWAWEGKKVPEALEMKKKTPAAPAKKTSTTFNIVGTTYPINLAKDTEFSTISKGA
 APSASSTPTIIASPKATYVQDSPTETKTYNSVSKVDKISRIFPVLFAIFNLVYWATYVYNRESAIGMIR
 KQ

TRTRPLEQKLISEEDLAANDILDYKDDDDKV

Chromatograms:

https://cdn.origene.com/chromatograms/mg2436_g04.zip

Restriction Sites:

Sgfl-MluI

Cloning Scheme:

ACCN: NM_000808

ORF Size: 1476 bp

OTI Disclaimer: Due to the inherent nature of this plasmid, standard methods to replicate additional amounts of DNA in E. coli are highly likely to result in mutations and/or rearrangements. Therefore, OriGene does not guarantee the capability to replicate this plasmid DNA. Additional amounts of DNA can be purchased from OriGene with batch-specific, full-sequence verification at a reduced cost. Please contact our customer care team at custsupport@origene.com or by calling 301.340.3188 option 3 for pricing and delivery.

The molecular sequence of this clone aligns with the gene accession number as a point of reference only. However, individual transcript sequences of the same gene can differ through naturally occurring variations (e.g. polymorphisms), each with its own valid existence. This clone is substantially in agreement with the reference, but a complete review of all prevailing variants is recommended prior to use. [More info](#)

OTI Annotation: This clone was engineered to express the complete ORF with an expression tag. Expression varies depending on the nature of the gene.

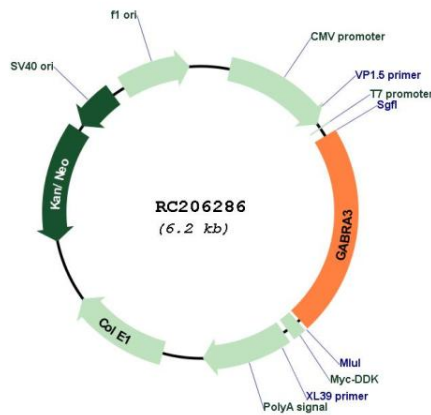
Components: The ORF clone is ion-exchange column purified and shipped in a 2D barcoded Matrix tube containing 10ug of transfection-ready, dried plasmid DNA (reconstitute with 100 ul of water).

- Reconstitution Method:**
1. Centrifuge at 5,000xg for 5min.
 2. Carefully open the tube and add 100ul of sterile water to dissolve the DNA.
 3. Close the tube and incubate for 10 minutes at room temperature.
 4. Briefly vortex the tube and then do a quick spin (less than 5000xg) to concentrate the liquid at the bottom.
 5. Store the suspended plasmid at -20°C. The DNA is stable for at least one year from date of shipping when stored at -20°C.

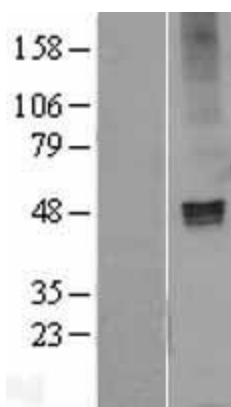
RefSeq: [NM_000808.4](#)

RefSeq Size:	1901 bp
RefSeq ORF:	1479 bp
Locus ID:	2556
UniProt ID:	P34903
Cytogenetics:	Xq28
Domains:	Neur_chan_memb, Neur_chan_LBD
Protein Families:	Druggable Genome, Ion Channels: Cys-loop Receptors, Transmembrane
Protein Pathways:	Neuroactive ligand-receptor interaction
MW:	55 kDa
Gene Summary:	GABA is the major inhibitory neurotransmitter in the mammalian brain where it acts at GABA-A receptors, which are ligand-gated chloride channels. Chloride conductance of these channels can be modulated by agents such as benzodiazepines that bind to the GABA-A receptor. At least 16 distinct subunits of GABA-A receptors have been identified. [provided by RefSeq, Jul 2008]

Product images:



Circular map for RC206286



Western blot validation of overexpression lysate (Cat# [LY426831]) using anti-DDK antibody (Cat# [TA50011-100]). Left: Cell lysates from untransfected HEK293T cells; Right: Cell lysates from HEK293T cells transfected with [RC225764] using transfection reagent MegaTran 2.0 (Cat# [TT210002]).