

Product datasheet for RC206285

Centrin 1 (CETN1) (NM_004066) Human Tagged ORF Clone

Product data:

Product Type: Expression Plasmids
Product Name: Centrin 1 (CETN1) (NM_004066) Human Tagged ORF Clone
Tag: Myc-DDK
Symbol: Centrin 1
Synonyms: CEN1; CETN
Mammalian Cell Selection: Neomycin
Vector: pCMV6-Entry (PS100001)
E. coli Selection: Kanamycin (25 ug/mL)
ORF Nucleotide Sequence: >RC206285 ORF sequence
 Red=Cloning site Blue=ORF Green=Tags(s)

TTTTGTAATACGACTCACTATAGGGCGGCCGGAATTCGTCGACTGGATCCGGTACCGAGGAGATCTGCC
 GCC**CGGATCGCC**

ATGGCTCCGGCTTCAAGAAGCCCAGCGCTGCCTCCACCGCCAAAAGAGAAAGGTGGCACCTAAGCCCG
 AGCTCACTGAGGATCAGAAGCAAGAAGTTCGGGAAGCATTGACCTCTTCGACGTGGACGGAAGTGGGAC
 CATCGACGCGAAGGAGCTGAAGTGGCCATGAGAGCGCTGGGCTTCGAACCCAGGAAGGAAGAGATGAAG
 AAAATGATCTCCGAGGTGGACAGGGAAGGCACGGGAAGATCAGCTTCAATGACTTCTGGCCGTGATGA
 CGCAGAAGATGTCGAGAAGGACACCAAAGAAGAAATCCTGAAGGCCTTCAGGCTCTTTGATGACGATGA
 GACCGGGAAGATCTCGTTCAAAAACCTGAAGCGTGTGGCCAACGAGCTGGGGGAGAACCTCACGGATGAG
 GAGCTGCAGGAGATGATCGACGAAGCTGATCGGGATGGGACGGCGAAGTGAACGAGGAGGATTCCTTC
 GGATCATGAAGAAGACCAGCCTTAC

ACGCGTACGCGGCCGCTCGAGCAGAACTCATCTCAGAAGAGGATCTGGCAGCAAATGATATCCTGGATT
 ACAAGGATGACGACGATAAGGTTTAA

Protein Sequence: >RC206285 protein sequence
 Red=Cloning site Green=Tags(s)

MASGFKKPSAASGTQKRKVAPKPELTEDQKQEVREAFDLFDVDGSGTIDAKELKVAMRALGFEPKKEEMK
 KMISEVDREGTGKISFNDFLAVMTQKMSEKDTKEEILKAFRLFDDDETGKISFKNLKRVANELGENLTDE
 ELQEMIDEADRDGDGEVNEEEFLRIMKKTSLY

TRTRPLEQKLISEEDLAANDILDYKDDDDKV

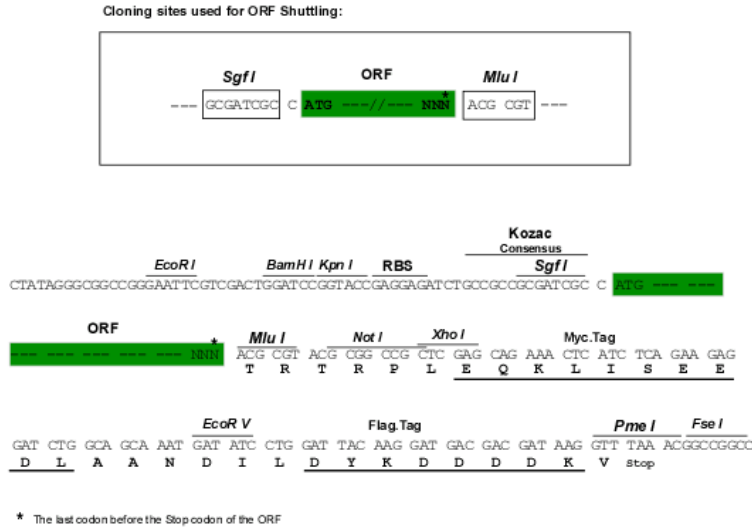
Chromatograms: https://cdn.origene.com/chromatograms/mk6074_d07.zip



[View online »](#)

Restriction Sites: SgfI-MluI

Cloning Scheme:



ACCN: NM_004066

ORF Size: 516 bp

OTI Disclaimer: Due to the inherent nature of this plasmid, standard methods to replicate additional amounts of DNA in E. coli are highly likely to result in mutations and/or rearrangements. Therefore, OriGene does not guarantee the capability to replicate this plasmid DNA. Additional amounts of DNA can be purchased from OriGene with batch-specific, full-sequence verification at a reduced cost. Please contact our customer care team at custsupport@origene.com or by calling 301.340.3188 option 3 for pricing and delivery.

The molecular sequence of this clone aligns with the gene accession number as a point of reference only. However, individual transcript sequences of the same gene can differ through naturally occurring variations (e.g. polymorphisms), each with its own valid existence. This clone is substantially in agreement with the reference, but a complete review of all prevailing variants is recommended prior to use. [More info](#)

OTI Annotation: This clone was engineered to express the complete ORF with an expression tag. Expression varies depending on the nature of the gene.

Components: The ORF clone is ion-exchange column purified and shipped in a 2D barcoded Matrix tube containing 10ug of transfection-ready, dried plasmid DNA (reconstitute with 100 ul of water).

- Reconstitution Method:**
1. Centrifuge at 5,000xg for 5min.
 2. Carefully open the tube and add 100ul of sterile water to dissolve the DNA.
 3. Close the tube and incubate for 10 minutes at room temperature.
 4. Briefly vortex the tube and then do a quick spin (less than 5000xg) to concentrate the liquid at the bottom.
 5. Store the suspended plasmid at -20°C. The DNA is stable for at least one year from date of shipping when stored at -20°C.

RefSeq: [NM_004066.3](#)

RefSeq Size: 1161 bp

RefSeq ORF: 519 bp

Locus ID: 1068

UniProt ID: [Q12798](#)

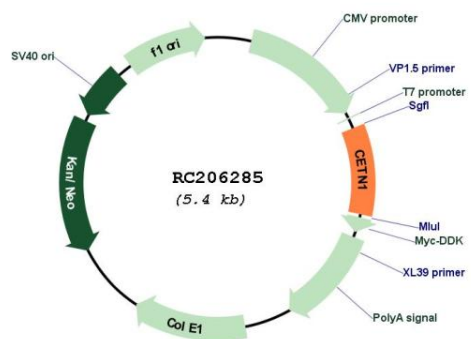
Cytogenetics: 18p11.32

Protein Families: Druggable Genome

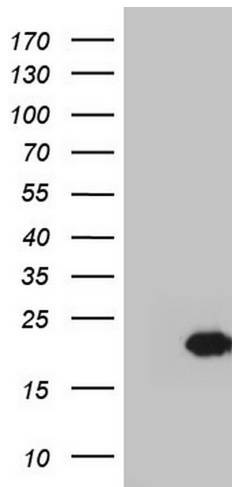
MW: 19.6 kDa

Gene Summary: The protein encoded by this gene plays important roles in the determination of centrosome position and segregation, and in the process of microtubule severing. This protein is localized to the centrosome of interphase cells, and redistributes to the region of the spindle poles during mitosis, reflecting the dynamic behavior of the centrosome during the cell cycle. [provided by RefSeq, Jan 2015]

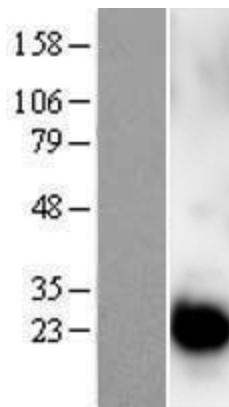
Product images:



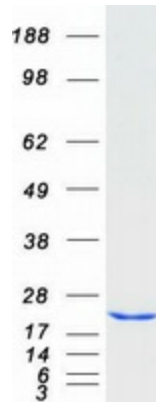
Circular map for RC206285



HEK293T cells were transfected with the pCMV6-ENTRY control (Cat# [PS100001], Left lane) or pCMV6-ENTRY CETN1 (Cat# RC206285, Right lane) cDNA for 48 hrs and lysed. Equivalent amounts of cell lysates (5 ug per lane) were separated by SDS-PAGE and immunoblotted with anti-CETN1 (Cat# [TA804389]). Positive lysates [LY401316] (100ug) and [LC401316] (20ug) can be purchased separately from OriGene.



Western blot validation of overexpression lysate (Cat# [LY401316]) using anti-DDK antibody (Cat# [TA50011-100]). Left: Cell lysates from untransfected HEK293T cells; Right: Cell lysates from HEK293T cells transfected with RC206285 using transfection reagent MegaTran 2.0 (Cat# [TT210002]).



Coomassie blue staining of purified CETN1 protein (Cat# [TP306285]). The protein was produced from HEK293T cells transfected with CETN1 cDNA clone (Cat# RC206285) using MegaTran 2.0 (Cat# [TT210002]).