

## Product datasheet for **RC206276**

### SLC9A6 (NM\_001042537) Human Tagged ORF Clone

#### Product data:

Product Type:	Expression Plasmids
Product Name:	SLC9A6 (NM_001042537) Human Tagged ORF Clone
Tag:	Myc-DDK
Symbol:	SLC9A6
Synonyms:	MRSA; NHE6
Mammalian Cell Selection:	Neomycin
Vector:	pCMV6-Entry (PS100001)
E. coli Selection:	Kanamycin (25 ug/mL)



[View online »](#)

ORF Nucleotide  
Sequence:

>RC206276 representing NM\_001042537  
 Red=Cloning site Blue=ORF Green=Tags(s)

TTTTGTAATACGACTCACTATAGGGCGGCCGGGAATTCGTCGACTGGATCCGGTACCGAGGAGATCTGCC  
 GCC**CGGATCGCC**

ATGGCTCGGCGCGGCTGGCGGCGGGCACCCCTCCGCCGTGGCGTCGGCAGCAGTCCCGGAGCCCGCAGGC  
 TCATGCGGCCCTTTGGTTGCTCCTCGCAGTGGGCGTCTTTGACTGGGCAGGGGCTTCGGACGGCGCGG  
 CGGAGAGGCTAGAGCCATGGACGAGGAGATCGTGTCCGAGAAGCAAGCCGAGGAGAGCCACCGCAGGAC  
 AGCGCCAACCTGCTCATCTTCCTGCTGCTCACCCCTACCATTCTCACAATCTGGCTCTTCAAGCACC  
 GCCGGGCCGCTTCTGCACGAAACCGGCTGGCTATGATTTATGGTCTTTGGTGGCCTTGTGCTTCG  
 GTATGGCATTATGTTCCGAGTGATGTAATAATGTGACCCTGAGCTGTGAAGTGCAGTCAAGTCCAAC  
 ACCTTACTGGTAAATGTTAGTGGAAAATTTATGAGTATATGCTGAAAGGAGAGATTAGTTCACATGAAC  
 TCAATAATGTTCAAGATAATGAAATGCTTAGAAAGTTACTTTTGATCCAGAAGATTTTTCAACATATT  
 ACTTCCTCTATCATATTTATGCAGGTTATAGCCTGAAAAGGAGACATTTTTTCGAAATCTTGGGTCT  
 ATCCTAGCATACGCTTTTCTTGGAACAGCAATTTCTTGTTCGTTATTGGGTCAATAATGTATGGCTGTG  
 TAACGCTGATGAAGGTAACGGGCAACTTGCAGGAGATTTTTACTTTACAGATTGCCTACTGTTTGGTGC  
 CATTGTATCAGCAACTGATCCAGTGACTGTTCTTGTCTATATCCACGAGCTTCAAGTTGATGTTGAACTC  
 TATGCACTTCTTTTGGTGAAGTGTCTCAATGATGCTGTTGCCATAGTGTCTCCTCAATAGTGG  
 CATACCAGCCAGCTGGAGACAACAGTACACCTTTGATGTCACAGCGATGTTCAAGTCTATTGGGATCTT  
 CCTTGGAACTTCCAGTGGATCTTTGCAATGGGTGCTGCTACTGGAGTGGTGACAGCTTTAGTGACAAAG  
 TTCACCAAATACGGGAGTCCAGTGTGGAGACAGGCTGTTCTTCTGATGTCCTGGAGTACCTTCC  
 TCTTGGCTGAAGCATGGGGCTCACAGGTGTAGTTGCAGTATTGTTTGGCATCACACAAGCACATTA  
 TAGCTATAATAATTTGTCCACGGAGTCTCAGCATAGAACTAAACAGTTGTTTGGCTTCTCAATTTCTTG  
 GCAGAGAATTTCTCTTCTCCTACATGGGCTGCACTGTTACCTTCCAGAACCATGTCTTTAACCCAA  
 CATTTGTAGTAGGAGCATTTGTTGCTATTTTCTTGGGAAGAGCTGCCAATATTTACCCCTTGTCCCTCTT  
 ACTTAATTTGGGTAGAAGAAGTAAGATTGGATCAAATTTCAACACATGATGATGTTTGGTGGCCTTCGT  
 GGTGCAATGGCATTGCTTGGCCATTCGAGATACTGCCACTTATGCACGGCAAATGATGTTGAGCACCA  
 CGCTTCTGATTGTGTTTTTACGGTGTGGGATTTGGTGGTGGCACCCTGCAATGCTGTCATGCTTGCA  
 TATCAGGGTTGGTGTGATTAGACCAAGAACAACCTTGGGTGTTCTGAAAATGAAAGGAGAACTACAAA  
 GCAGAGAGTGCTTGGCTTTCCGGATGTGGTACAACCTTGGTATCATAACTATCTGAAGCCTCTGCTGACCC  
 ACAGCGGGCCTCCGCTGACAACAACACTCCCTGCCTGCTGTGGACCCATCGCCAGGTGCCTCACCAGCCC  
 CCAGGCTTACGAAAACAGGAACAGTTGAAAGATGATGATTCTGATCTTATTCTCAATGATGGTGACATC  
 AGTTTGACATATGGAGATTCTACTGTGAACACTGAACCGCCACATCCAGCGCCCAAGGAGATTTATGG  
 GAAACAGTTCTGAAGATGCCTTGGATCGGGAGCTTGCATTTGGGGACCATGAACTGGTCATTGAGGAAAC  
 ACGCCTGGTCTTCCAATGGATGATTCTGAACCCCGCTAAATTTGTTAGATAATACGAGACATGGTCCA  
 GCC

**ACGCGT**ACGCGGCCGCTCGAGCAGAACTCATCTCAGAAGAGGATCTGGCAGCAAATGATATCCTGGATT  
 ACAAGGATGACGACGATAAGGTTTAA

**Protein Sequence:** >RC206276 representing NM\_001042537  
 Red=Cloning site Green=Tags(s)

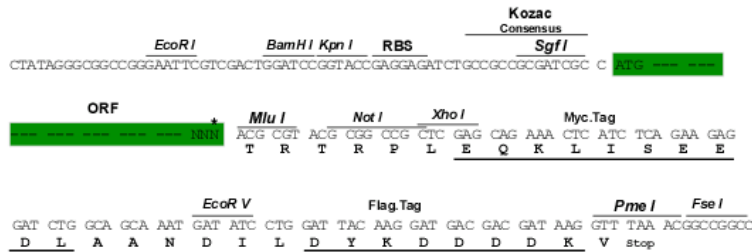
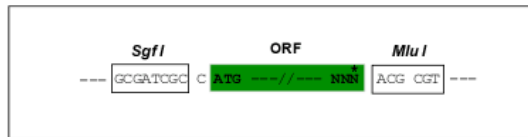
MARRGWRRAPLRRGVGSSPGARRLMRPLWLLAVGVFDWAGASDGGGGEARAMDEEIVSEKQAEESHQRQD  
 SANLLIFILLTLTILTIWLFKHRRARFLHETGLAMIYGLLVGLVLRYGIVHVPDNNVTLSCVQSSPT  
 TLLVNVSGKFYEYMLKGEISSHELNNVQDNEMLRKVTFDPEVFFNILLPPIIFYAGYSLKRRHFFRNLS  
 ILAYAFGLGTAISCFVIGSIMYGCVTLMKVTGQLAGDFYFDCLLFGAIVSATDPVTVLAIFHELQVDVEL  
 YALLFGESVLNDAVAIVLSSSIVAYQPAGDNSHTFDVTAMFKSIGIFLGIFSGSFAMGAATGVVTALVTK  
 FTKLREFQLETLGFFLMSWSTFLLAEAWGFTGVVAVLFCGITQAHYTYNNLSTESQHRTKQLFELLNFL  
 AENFISYMGTLFTFQNHVFNPTFVVGAFVAIFLGRAANIYPLSLLNLGRRSKIGSNFQHMMMFAGLR  
 GAMAFALAIRDTATYARQMMFSTLLIVFFTVWVFGGGTTAMLSCHIRVGVSDSQEHLGVPENERRTTK  
 AESAWLFRMWYFDHNYLKPLLTHSGPPLTTLPACCGPIARCLTSPQAYENQEQLKDDSDILNDGDI  
 SLTYGDSTVNTEPATSSAPRRFMGNSSDALDRELAFGDHELVIIRGTRLVLPMDDEPPLNLLDNTRHGP  
 A

TRTRPLEQKLISEEDLAANDILDYKDDDDKV

**Restriction Sites:** SgfI-MluI

**Cloning Scheme:**

Cloning sites used for ORF Shuttling:



\* The last codon before the Stop codon of the ORF

**ACCN:** NM\_001042537

**ORF Size:** 2103 bp

**OTI Disclaimer:** The molecular sequence of this clone aligns with the gene accession number as a point of reference only. However, individual transcript sequences of the same gene can differ through naturally occurring variations (e.g. polymorphisms), each with its own valid existence. This clone is substantially in agreement with the reference, but a complete review of all prevailing variants is recommended prior to use. [More info](#)

**OTI Annotation:** This clone was engineered to express the complete ORF with an expression tag. Expression varies depending on the nature of the gene.

**Components:** The ORF clone is ion-exchange column purified and shipped in a 2D barcoded Matrix tube containing 10ug of transfection-ready, dried plasmid DNA (reconstitute with 100 ul of water).

**Reconstitution Method:**

1. Centrifuge at 5,000xg for 5min.
2. Carefully open the tube and add 100ul of sterile water to dissolve the DNA.
3. Close the tube and incubate for 10 minutes at room temperature.
4. Briefly vortex the tube and then do a quick spin (less than 5000xg) to concentrate the liquid at the bottom.
5. Store the suspended plasmid at -20°C. The DNA is stable for at least one year from date of shipping when stored at -20°C.

**RefSeq:** [NM\\_001042537.1](#), [NP\\_001036002.1](#)

**RefSeq Size:** 4742 bp

**RefSeq ORF:** 2106 bp

**Locus ID:** 10479

**UniProt ID:** [Q92581](#)

**Cytogenetics:** Xq26.3

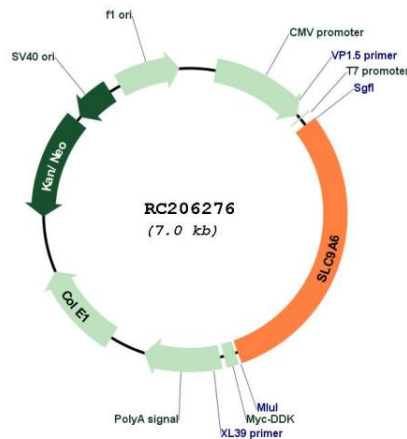
**Protein Families:** Druggable Genome, Transmembrane

**Protein Pathways:** Cardiac muscle contraction

**MW:** 77.7 kDa

**Gene Summary:** This gene encodes a sodium-hydrogen exchanger that is a member of the solute carrier family 9. The encoded protein localizes to early and recycling endosomes and may be involved in regulating endosomal pH and volume. Defects in this gene are associated with X-linked syndromic cognitive disability, Christianson type. Alternate splicing results in multiple transcript variants.[provided by RefSeq, Apr 2010]

### Product images:



Circular map for RC206276