

Product datasheet for **RC206274**

Glycine Receptor alpha 3 (GLRA3) (NM_006529) Human Tagged ORF Clone

Product data:

Product Type:	Expression Plasmids
Product Name:	Glycine Receptor alpha 3 (GLRA3) (NM_006529) Human Tagged ORF Clone
Tag:	Myc-DDK
Symbol:	Glycine Receptor alpha 3
Mammalian Cell Selection:	Neomycin
Vector:	pCMV6-Entry (PS100001)
E. coli Selection:	Kanamycin (25 ug/mL)



[View online »](#)

ORF Nucleotide Sequence:

>RC206274 ORF sequence
 Red=Cloning site Blue=ORF Green=Tags(s)

TTTTGTAATACGACTCACTATAGGGCGGCCGGAATTCGTCGACTGGATCCGGTACCGAGGAGATCTGCC
 GCC**CGCATCGCC**

ATGGCCCACGTGAGACACTTTTCGGACATTAGTTTCGGGATTTTACTTCTGGGAAGCAGCACTGTTACTCA
 GTTTGGTTGCCACAAAGGAAACAGACAGTGAAGATCTCGAAGTCTCCAATGTCACCTTCTGATTTTCT
 GGATAAATTAATGGGCAGGACATCAGGATATGATGCAAGAATCAGACCAATTTTAAAGGCCCTCCAGTT
 AATGTCACATGCAACATATTCATCAACAGCTTTGGCTCTATCGCAGAGACGACCATGGATTACAGAGTGA
 ATATCTTTCTTCGTAGAAATGGAATGATCCCCGCTCGGTACAGTGAATATCTGACGACTCTTTAGA
 CCTCGACCCCTCCATGTTGGACTCCATTTGAAACCTGATTTGTTCTTTGCCAATGAAAAGGGTGCCAAC
 TTTTCATGAAGTCACTACAGACAACAAATGCTAAGAATTTTCAAAAATGGAAATGTTCTTTATTCAATA
 GATTAACATTAACACTTTCTGTCCAATGGATCTCAAGAATTTCCCATGGATGTACAAACATGTATAAT
 GCAACTGGAAAGCTTTGGGTACACAATGAATGATCTCATTGTTGAAAGGAAAGATTTACGATACTGCACTAAAC
 GTGGCAGAAGGACTCACTTTGCCCCAGTTTCTGTTGAAAGAAGAAAAGATTTACGATACTGCACTAAAC
 ATTACAATACAGGAAAGTTTACGTGTATAGAAGTGCATTCCATCTGGAGCGACAATGGGATACTACTCT
 GATCCAGATGTACATCCAGTCTCCTGATTGTTATTCTATCCTGGGTTTCGTTCTGGATCAACATGGAT
 GCAGCACCAGGAGGATAGCTCTGGGATAACCACCGTGTAAACGATGACTACACAGAGTTCAGGATCAC
 GAGCTTCTTGCCAAAAGTTTCATATGTCAAAGCTATTGATATTTGGATGGCAGTATGCCTCCTTTTTGT
 GTTTTCAGCACTTCTGGAGTATGCAGCTGTAATTTTGTATCAAGACAACACAAAGAACTTCTGAGATTT
 CGACGAAAGAGAAAGAATAAGACAGAAGCCTTTGCACTGGAGAAGTTTACCCTTCTCAGATATGGATG
 ATGAGGTAAGGGAAAGCCGATTCAGCTTACAGCCTATGGAATGGGACCATGTCTACAAGCAAGGATGG
 CATGACTCCAAAAGGGCCCAACCACCTGTCCAGGTAATGCCAAAAGTCTGATGAAATGAGGAAGGTC
 TTTATCGACCGGCCAAGAAGATTGATACCATCTCCCGAGCCTGCTTCCATTAGCTTTTTTATTGTTTTA
 ATATTTTCTACTGGGTTATCTATAAAATCTTAGGCATGAGGATATTCATCAGCAGCAAGAT

ACGCGTACGCGGCCGCTCGAGCAGAACTCATCTCAGAAGAGGATCTGGCAGCAATGATATCCTGGATT
 ACAAGGATGACGACGATAAGGTTTAA

Protein Sequence:

>RC206274 protein sequence
 Red=Cloning site Green=Tags(s)

MAHVRHFRTLVSIFYFWEAALLLSLVATKETDSARSRAPMSPSDFLDKLMGRITSGYDARIRPNFKGPPV
 NVTCNIFINSFGSIAETMDYRVNIFLRQKWNDRLAYSEYPDDSLDLPSMLDSIWKPDLLFFANEKGAN
 FHEVTTDNKLLRIFKNGNLYSIRLTLTLSCPMDLKNFMDVQTCIMQLESFGYTMNDLIFEWQDEAPVQ
 VAEGTLTPQFLLKEEKDLRYCTKHYNTGKFTCIEVRFHLERQMGYYLIQMYIPSLILVILSWVSFWINMD
 AAPARVALGITTTLTMTTQSSGSRASLPKVSIVKAIIDIMAVCLLFFVSALLEYAAVNFVSRQHKELLRF
 RRRKRNKTEAFALEKFYRFSDMDEVRESRFSFTAYGMGPCLQAKDGMTPKGNHPVQVMPKSPDEMRKV
 FIDRAKKIDTISRACFLAFLIFNIFYWVIYKILRHEDIHQQQD

TRTRPLEQKLISEEDLAANDILDYKDDDDKV

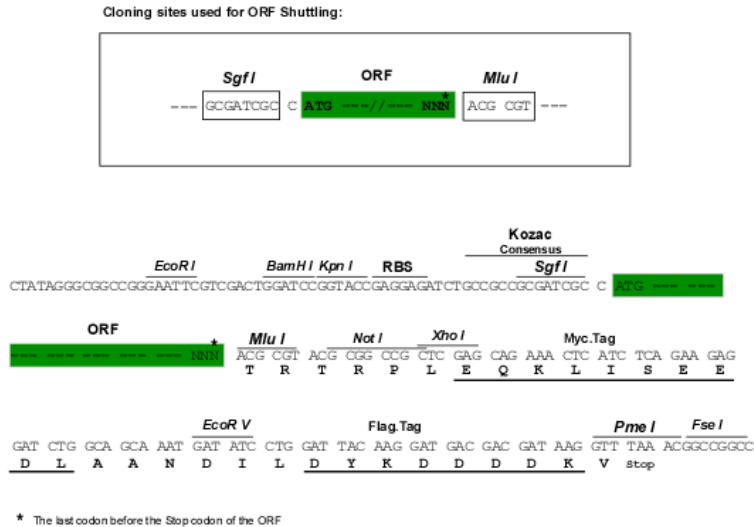
Chromatograms:

https://cdn.origene.com/chromatograms/mk6138_g02.zip

Restriction Sites:

SgfI-MluI

Cloning Scheme:



ACCN: NM_006529

ORF Size: 1392 bp

OTI Disclaimer: The molecular sequence of this clone aligns with the gene accession number as a point of reference only. However, individual transcript sequences of the same gene can differ through naturally occurring variations (e.g. polymorphisms), each with its own valid existence. This clone is substantially in agreement with the reference, but a complete review of all prevailing variants is recommended prior to use. [More info](#)

OTI Annotation: This clone was engineered to express the complete ORF with an expression tag. Expression varies depending on the nature of the gene.

Components: The ORF clone is ion-exchange column purified and shipped in a 2D barcoded Matrix tube containing 10ug of transfection-ready, dried plasmid DNA (reconstitute with 100 ul of water).

- Reconstitution Method:**
1. Centrifuge at 5,000xg for 5min.
 2. Carefully open the tube and add 100ul of sterile water to dissolve the DNA.
 3. Close the tube and incubate for 10 minutes at room temperature.
 4. Briefly vortex the tube and then do a quick spin (less than 5000xg) to concentrate the liquid at the bottom.
 5. Store the suspended plasmid at -20°C. The DNA is stable for at least one year from date of shipping when stored at -20°C.

RefSeq: [NM_006529.4](#)

RefSeq Size: 3674 bp

RefSeq ORF: 1395 bp

Locus ID: 8001

UniProt ID: [O75311](#)

Cytogenetics: 4q34.1

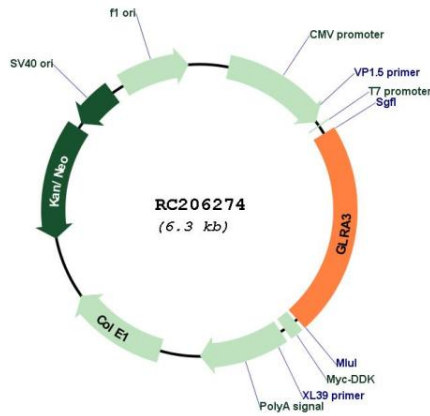
Protein Families: Druggable Genome, Ion Channels: Cys-loop Receptors, Transmembrane

Protein Pathways: Neuroactive ligand-receptor interaction

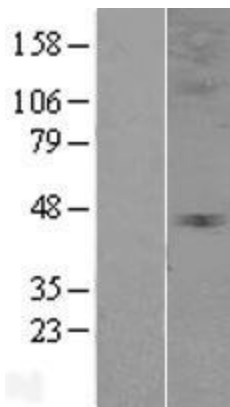
MW: 53.8 kDa

Gene Summary: This gene encodes a member of the ligand-gated ion channel protein family. The encoded protein is a member of the glycine receptor subfamily. Alternative splicing results in multiple transcript variants. [provided by RefSeq, Nov 2013]

Product images:



Circular map for RC206274



Western blot validation of overexpression lysate (Cat# [LY401955]) using anti-DDK antibody (Cat# [TA50011-100]). Left: Cell lysates from untransfected HEK293T cells; Right: Cell lysates from HEK293T cells transfected with RC206274 using transfection reagent MegaTran 2.0 (Cat# [TT210002]).