

## Product datasheet for **RC206272**

### JIP2 (MAPK8IP2) (NM\_012324) Human Tagged ORF Clone

#### Product data:

Product Type:	Expression Plasmids
Product Name:	JIP2 (MAPK8IP2) (NM_012324) Human Tagged ORF Clone
Tag:	Myc-DDK
Symbol:	MAPK8IP2
Synonyms:	IB-2; IB2; JIP2; PRKM8IPL
Vector:	pCMV6-Entry (PS100001)
E. coli Selection:	Kanamycin (25 ug/mL)
Cell Selection:	Neomycin



[View online »](#)

ORF Nucleotide  
Sequence:

>RC206272 representing NM\_012324  
Red=Cloning site Blue=ORF Green=Tags(s)

TTTTGTAATACGACTCACTATAGGGCGGCCGGGAATTCGTCGACTGGATCCGGTACCGAGGAGATCTGCC  
GCCGCGATCGCC

ATGGCGGATCGCGGGAGATGTTTTCTCTCTCCACCTTCCACTCGCTGTGCGCCGGGGTGCAGGCCTC  
CCCAGGACATAAGCCTGGAAGAATTTGACGACGAAGATCTGTCTGAGATCACTGATGACTGTGGCCTGGG  
CCTCAGCTACGACTCAGACCACTGTGAGAAGGACAGCCTCTCCCTGGGGCGCTCGGAGCAGCCGACCC  
ATCTGCTCCTTCCAGGATGACTTCCAGGGGTTTGTAGATGATCGATGACAATGAAGAGGAGGACGATGAGG  
ACGAGGAAGAGGAGGAGGAGGAGGAGGAGGAGATGGGAAGGCCAGGAGGAGGAGACCCTGGCTCAGA  
GGCACCTGCCCGGGCCCTTATCCCCTCCGCTTCGGTGGAGGAGCCCCACAAGCACGGCCACCACC  
CTCCGCTGACCACACTGGGGGCCAGGACTCCCTAAACAACAACGGAGGCTTTGACCTGGTGCCTCCGG  
CCTCCTGGCAGGAGACAGCGCTATGCTCACCCGCCCGAGGCCCTCAGAGAGCTCCCGGGCCCCCTCCC  
TGCCACGGACACCGGGCCGGCGGGGCGCAGTGCAGTGCGCCGGGTTGCGACTGCGAAGGGAACCGG  
CCTGCGGAACCCCTGCGCCAGGGGGGACTTCCGCTCCTCAGATCCCAGGATCGAGGCTGACCTGAGAA  
GCCGCTCGAGCGGGCCGGCGGGGGACGTCGACAGCAGCAGGAGCTGTCTCGCCGGCTCCGACTCGGA  
GGACGCGGGCGGCGCGCGCTGGGGCGCATGATCTCGTCCATCTCGGAGACGGAGCTGGAGCTGAGCAGC  
GATGGCGGAAGCAGCAGCAGCGGCCGCTCCTCGCACCTCACCAACTCCATCGAGGAGGCCTCGTCGCCC  
CCTCGGAGCCGGAGCCCCCGCGCAACCCCGCGCCCGCCCGCTTCTCGCCGTGGGCCCGACGACAC  
CAACAGCAGTACGAGTCGGGGTCGGAGTCGGAGCCGGACCTCAGCGAGGACCGGACTCGCCCTGGCTG  
CTCAGCAACTGGTGAGCCGCATGATCTCCGAGGGCTCCTCGCCATCCGCTGCCCGGCCAGGACTCCCAGACCC  
CGAGGCGGCGCGGGGGCCGCGGGCGTGGAGCTGGTGGACATGGAGACGCTGTGCGCGCCGCGCCGCGCC  
GCGCCCGCGCCTCGACCCGCGCCCGCGCAGCCGGGCCCTGCCTATTCTCAGCAACCCACGCGTG  
ACACCATCACGCCGCTGTGGCCGCGCCCGCGCGCCCGCCCGGGACGAGCCTGCTCGCCGCGCTG  
CTCAAGGAGGAGGACGAAGAGGACGACGAGGAAGAGGAGGATGCCGAGGACAGTGGGGTCCCGGGG  
GGCAGGGGACGGGCCCTCGGCAGCGGGGACGCGTGTGGTGTACGACGCGGTCAAGTACACGCTGG  
TGTTGGATGAGCACACGAGCTGGAGCTGGTGTGAGCTGCGGGCTGTGCTGGGCTGGGCCACGACGCGA  
AGAGGACAGCGGGGGAGGCCAGCAGGAGGAGGCGGGCGCGCGCTGCTAGGCGGCGGTGAGGTCTCG  
GGGACACCTCGCCGGACAGCCCTGACCTCACTTTCTCCAAGAAGTTCCTCAATGTCTTGTCAACAGCA  
CATCTCGTCTCCAGCACCGAGTCCTTTGGCCTTTTCTCTGTGTTCAACGCGAGGAGCGAGAGCA  
GACTCACCGGGTGTGTTTCAGGTTATCCCGCGCATCCAGACGAGCTGGAGCTGGATGTGGATGACCT  
GTGTTGGTGGAGGCCGAGGAGGACGACTTCTGTTCCGTGGCTTCAACATGCGCACGGGGAGCGCGGTG  
TGTTTCTGCTTCTACGCCATGCGGTGCCGGCCCTGCCAAGGACCTGCTGGGGAGTAAGCGGAGCCC  
CTGCTGGGTGGAGCGCTTTGACGTGAGTTCTGGGCTCCGTGGAGGTGCCCTGCCACCAGGGCAACGGC  
ATCCTGTGTGAGCCATGAGAAAGATTGCCACTGCCGGAAACTGACCGTCCACTGCGCCCTCTGCT  
CCTGTGACCTCGAGATCTCTTTCGGGGGTCAAGCTGAGTCTGAGCGGAGGAGGCCGAGTTCAGCGG  
CTGCAGCCATTTCTTCCAGATGAAGAACATCTCTTCTGCGGCTGCCATCCCCGCAACAGCTGCTATTT  
GGCTTACACCAAAACCCCCCTGCTGAGCCGCTTCCCTGCCACGCTTTTGTCTCCAGGAGTCCATGA  
GGCCGGTGGCGAGAGTGTGGCCGCGCCTTCTGGAGTACTACCAAGAGCACCTGGCGTACGCTGCC  
CACGGAGGACATCTACCTGGAG

AGCGGACCGACGCGTACGCGGCCGCTCGAGCAGAACTCATCTCAGAAGAGGATCTGGCAGCAAATGATATCC  
TGGATTACAAGGATGACGACGATAAGGTTTAA

**Protein Sequence:** >RC206272 representing NM\_012324  
 Red=Cloning site Green=Tags(s)

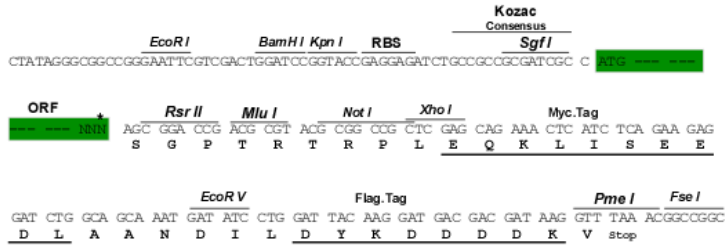
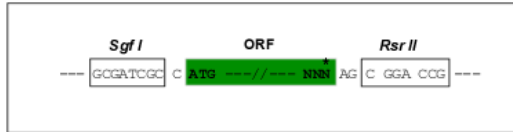
MADRAEMFSLSTFHSLSPPGCRPPQDISLEEFDDDELSEITDDCGLGLSYSDHCEKDSLSLGRSEQPH  
 ICSFQDDFQGFEMIDDNEEEDDEDEEEEEEGDGEGQEGGDPGSEAPAPGPLIPSASVEEPHKHRPTT  
 LRLTTLGAQDSLNNNGGFDLVRPASWQETALCSPAPEALRELPGLPATDTGPGGAQSPVRPGDCEGNR  
 PAEPPAPGGTSPSSDPGIEADLRSRSSGGRGRRSSQELSSPGSDESDAGGARLGRMISSISETELELSS  
 DGGSSSSGRSSHLTNSIEEASSPASEPEPPREPPRRPAFLPVGPDDTNSEYESGSESEPDLESDADSPWL  
 LSNLVSRLMISEGSSPIRCPGQCLSPAPRPPGEPVSPAGGAAQDSQDPEAAAGPGGVELVDMETLCAPPPP  
 APAAPRPGPAQPGPCLFLSNPTRDTITPLWAAPGRAARPGRACSAACSKEEEDDEEEEDAEDSAGSPG  
 GRGTGPSAPRDASLVYDAVKYTLVVDEHTQLELVSLRRCAGLGHDSSEDSGGEASEEEAGAALLGGGQVS  
 GDTSPDSPDLTFSKKFLNVFVNSTSRSSSTESFGLFSCLVNGEEREQTHRAVFRFIPRHPDELELDVDDP  
 VLVEAEEDDFWFRGFNMRTGERGVFAFYAHAVPGPAKDLLGSKRSPCWVERFDVQFLGSVEVPCHQNG  
 ILCAAMQKIATARKLTVHLRPPASCDLEISLRGVKLSLGGGPEFQRCSHFFQMKNISFCGCHPRNSCYF  
 GFITKHPLL SRFACHVFVSQESMRPVAQSVGRAFL EYYQEHLAYACPTEDIYLE

SGPTRRRRLEQKLI SEEDLAANDILDYKDDDDKV

**Restriction Sites:** SgfI-RsrII

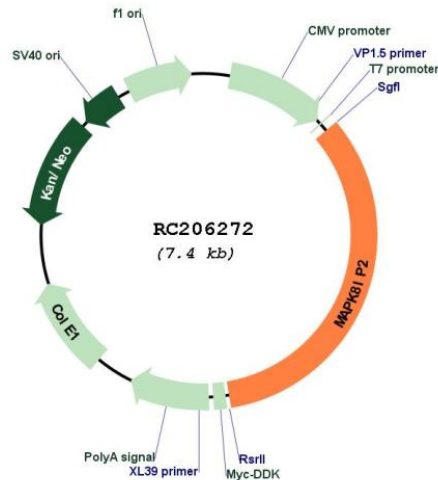
Cloning Scheme:

Cloning sites used for ORF Shuttling:



\* The last codon before the Stop codon of the ORF

## Plasmid Map:



ACCN: NM\_012324

ORF Size: 2472 bp

**OTI Disclaimer:** The molecular sequence of this clone aligns with the gene accession number as a point of reference only. However, individual transcript sequences of the same gene can differ through naturally occurring variations (e.g. polymorphisms), each with its own valid existence. This clone is substantially in agreement with the reference, but a complete review of all prevailing variants is recommended prior to use. [More info](#)

**OTI Annotation:** This clone was engineered to express the complete ORF with an expression tag. Expression varies depending on the nature of the gene.

**Components:** The ORF clone is ion-exchange column purified and shipped in a 2D barcoded Matrix tube containing 10ug of transfection-ready, dried plasmid DNA (reconstitute with 100 ul of water).

**Reconstitution Method:**

1. Centrifuge at 5,000xg for 5min.
2. Carefully open the tube and add 100ul of sterile water to dissolve the DNA.
3. Close the tube and incubate for 10 minutes at room temperature.
4. Briefly vortex the tube and then do a quick spin (less than 5000xg) to concentrate the liquid at the bottom.
5. Store the suspended plasmid at -20°C. The DNA is stable for at least one year from date of shipping when stored at -20°C.

RefSeq: [NM\\_012324.6](#)

RefSeq Size: 3381 bp

RefSeq ORF: 2475 bp

Locus ID: 23542

UniProt ID: [Q13387](#)

**Cytogenetics:** 22q13.33

**Protein Families:** Druggable Genome

**Protein Pathways:** MAPK signaling pathway

**MW:** 87.8 kDa

**Gene Summary:** This gene encodes a scaffold protein that is thought to be involved in the regulation of the c-Jun amino-terminal kinase signaling pathway. This protein has been shown to interact with and regulate the activity of MAPK8/JNK1 and MAP2K7/MKK7 kinases. [provided by RefSeq, Jun 2017]