

Product datasheet for RC206268

SCRN1 (NM_014766) Human Tagged ORF Clone

Product data:

Product Type:	Expression Plasmids
Product Name:	SCRN1 (NM_014766) Human Tagged ORF Clone
Tag:	Myc-DDK
Symbol:	SCRN1
Synonyms:	SES1
Mammalian Cell Selection:	Neomycin
Vector:	pCMV6-Entry (PS100001)
E. coli Selection:	Kanamycin (25 ug/mL)
ORF Nucleotide Sequence:	>RC206268 ORF sequence Red=Cloning site Blue=ORF Green=Tags(s)

TTTTGTAATACGACTCACTATAGGGCGCCGGGAATTCGTCGACTGGATCCGGTACCGAGGAGATCTGCCGCC**CGATCGCC**

ATGGCTGCAGCTCCTCCAAGTTACTGTTTTGTTGCCTTCCCTCCACGTGCTAAGGATGGTCTGGTGGTAT
TTGGGAAAAATTCAGCCCGGCCAGAGATGAAGTGAAGAGGTTGTGATTTCTCGGCTGCTGATCACGA
ACCGGAGAGCAAGGTTGAGTGCACCTTACATTTCAATCGACCAAGTTCCAAGGACCTATGCCATAATGATA
AGCAGACCCGCCCTGGCTCTGGGAGCAGAAATGGGAGCCAATGAACATGGAGTGTGCATAGCCAATGAAG
CCATCAACACCAGAGAGCCAGCTGCCGAGATAGAAGCCTTGCTGGGGATGGATCTGGTCAGGCTTGGTTT
AGAAAGAGGGGAAACAGCTAAAGAAGCCTTAGATGTCATTGTCTCCTTGTGGAAGAACATGGACAAGGT
GGGAATTACTTTGAAGATGCAAACCTCCTGCCACAGCTTCCAAAGTGCATATCTGATTGTGGATCGTGATG
AAGCCTGGGTGCTCGAGACCATAGGGAAGTACTGGGCTGCCGAGAAAAGTACAGAGGGAGTGAGGTGCAT
TTGCAGTCAGCTTTCGCTCACCCTAAGATGGATGCAGAGCATCCGGAACCTCAGGAGTTACGCTCAGAGC
CAAGGTTGGTGGACGGGAGAGGGCGAGTTCAATTTTTCCGAAAGTCTTTTCCAGTTGAGGATCATCTAG
ACTGCGGTGCTGGCAAAGACAGCTTAGAAAAACAAGAAGAAGCATCACAGTGCAGACTATGATGAACAC
CTTACGGGACAAAGCCAGCGGAGTGTGCATAGACTCTGAGTTTTTCTCACCACAGCCAGTGGAGTGTCT
GTCCTGCCGAGAAATAGAAGCTCTCCGTGCATTCACACTTCACTGGAACCCATGATCCTCCAGGTCCA
TATTCAGCCTTTCATCTTTGTTGATGACGTAAAACCTTGCCCCAAAACACAGTCTCCCTGTTTTGGGGA
TGACGACCCTGCCAAAAAGGAGCCTCGGTTCCAGGAGAAAACCAGACCCGCCGCATGAGCTGTACAAAGCC
CACGAGTGGGCACGTGCCATCATCGAAAGTGACCAGGAGCAAGGTCGCAAGCTGAGGAGCACCATGCTGG
AGCTGGAGAAGCAAGGCCTGGAAGCCATGGAAGAAATCCTGACCAGCTCCGAGCCACTGGACCCTGCGGA
AGTGGGGACCTTTTCTATGACTGTGTTGACACGGAGATTAAGTTCTTTAAG

ACGCGTACGCGGCCGCTCGAGCAGAAACTCATCTCAGAAGAGGATCTGGCAGCAAATGATATCCTGGATT
ACAAGGATGACGACGATAAGGTTTAA



Protein Sequence: >RC206268 protein sequence
Red=Cloning site Green=Tags(s)

MAAAPPSYCFVAFPPRAKDGLVVF GKNSARPRDEVQEVVYFSAADHEPESKVECTYISIDQVPRTYAIMI
 SRPAWLWGAEMGANEHGVCIANEAINTREPAAEIEALLGMDLVRLGLERGETAKEALDVI VSLLEEHGQG
 GNYFEDANSCHSFQSAYLIVDRDEAWVLETIGKYWAAEKVTEGVRICSQLSLTTKMDAHEPELRSYAQS
 QGWWTGEGEFNFSEVFSPEVDHLDCGAGKDSLEKQEESITVQTMNTLRDKASGVCIDSEFFLTTASGVS
 VLPQNRSSPCIHYFTGTHDPSRSIFKPFIFVDDVKLVPKTQSPCFGDDDP AKKEPRFQEKPDRRHELKYA
 HEWARAIIESDQEGRKLRSTMLELEKQGLEAMEEILTSSEPLDPAEVDLFDYDCVDTEIKFFK

TRTRPLEQKLISEEDLAANDILDYKDDDDKV

Chromatograms: https://cdn.origene.com/chromatograms/mk6341_c01.zip

Restriction Sites: SgfI-MluI

Cloning Scheme:



ACCN: NM_014766

ORF Size: 1242 bp

OTI Disclaimer: The molecular sequence of this clone aligns with the gene accession number as a point of reference only. However, individual transcript sequences of the same gene can differ through naturally occurring variations (e.g. polymorphisms), each with its own valid existence. This clone is substantially in agreement with the reference, but a complete review of all prevailing variants is recommended prior to use. [More info](#)

OTI Annotation: This clone was engineered to express the complete ORF with an expression tag. Expression varies depending on the nature of the gene.

Components: The ORF clone is ion-exchange column purified and shipped in a 2D barcoded Matrix tube containing 10ug of transfection-ready, dried plasmid DNA (reconstitute with 100 ul of water).

Reconstitution Method:

1. Centrifuge at 5,000xg for 5min.
2. Carefully open the tube and add 100ul of sterile water to dissolve the DNA.
3. Close the tube and incubate for 10 minutes at room temperature.
4. Briefly vortex the tube and then do a quick spin (less than 5000xg) to concentrate the liquid at the bottom.
5. Store the suspended plasmid at -20°C. The DNA is stable for at least one year from date of shipping when stored at -20°C.

RefSeq: [NM_014766.3](#)

RefSeq Size: 5278 bp

RefSeq ORF: 1245 bp

Locus ID: 9805

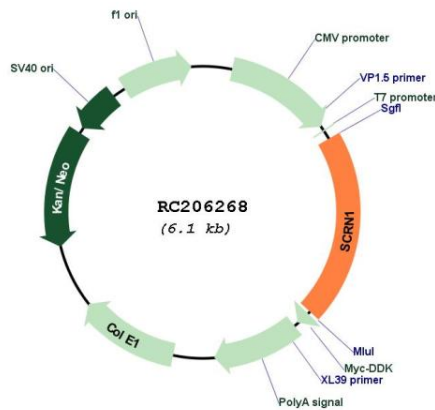
UniProt ID: [Q12765](#)

Cytogenetics: 7p14.3

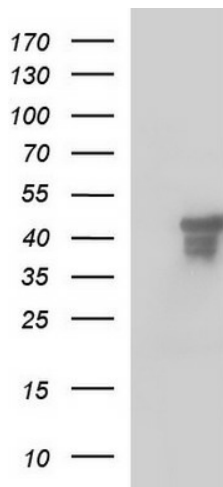
MW: 46.4 kDa

Gene Summary: This gene likely encodes a member of the secernin family of proteins. A similar protein in rat functions in regulation of exocytosis in mast cells. Alternatively spliced transcript variants have been described. [provided by RefSeq, Mar 2009]

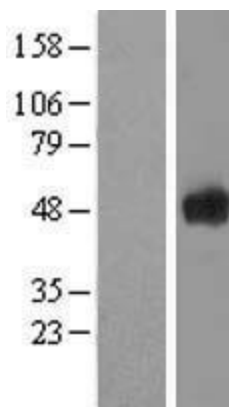
Product images:



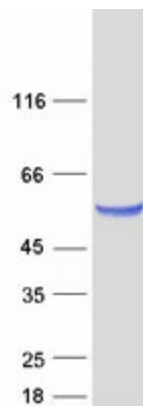
Circular map for RC206268



HEK293T cells were transfected with the pCMV6-ENTRY control (Cat# [PS100001], Left lane) or pCMV6-ENTRY SCRN1 (Cat# RC206268, Right lane) cDNA for 48 hrs and lysed. Equivalent amounts of cell lysates (5 ug per lane) were separated by SDS-PAGE and immunoblotted with anti-SCRN1 (Cat# [TA507264]). Positive lysates [LY414994] (100ug) and [LC414994] (20ug) can be purchased separately from OriGene.



Western blot validation of overexpression lysate (Cat# [LY428918]) using anti-DDK antibody (Cat# [TA50011-100]). Left: Cell lysates from untransfected HEK293T cells; Right: Cell lysates from HEK293T cells transfected with [RC227072] using transfection reagent MegaTran 2.0 (Cat# [TT210002]).



Coomassie blue staining of purified SCRN1 protein (Cat# [TP306268]). The protein was produced from HEK293T cells transfected with SCRN1 cDNA clone (Cat# RC206268) using MegaTran 2.0 (Cat# [TT210002]).