

Product datasheet for **RC206262**

KLF3 (NM_016531) Human Tagged ORF Clone

Product data:

Product Type: Expression Plasmids
 Product Name: KLF3 (NM_016531) Human Tagged ORF Clone
 Tag: Myc-DDK
 Symbol: KLF3
 Synonyms: BKLF
 Mammalian Cell Selection: Neomycin
 Vector: pCMV6-Entry (PS100001)
 E. coli Selection: Kanamycin (25 ug/mL)
 ORF Nucleotide Sequence: >RC206262 representing NM_016531
 Red=Cloning site Blue=ORF Green=Tags(s)

TTTTGTAATACGACTCACTATAGGGCGGCCGGAATTCGTCGACTGGATCCGGTACCGAGGAGATCTGCC
 GCC**CGATCGCC**

ATGCTCATGTTTGACCCAGTTCCTGTCAAGCAAGAGGCCATGGACCCTGTCTCAGTGTACATACCCATCTA
 ATTACATGGAATCCATGAAGCCTAACAAAGTATGGGGTCACTACTCCACACCATTGCCTGAGAAGTTCTT
 TCAGACCCAGAAAGTCTGTCCGACGGAATACAGATGGAGCCAGTGGACCTCACGGTGAACAAGCGGAGT
 TCACCCCTTCGGCTGGGAATTCGCCCTCTCTGAAGTCCCCTCCTCACACCCGAGAGCCTCGCCTG
 GGTGAGCATGCCTTCTCCAGCCACCGATAAAAAAATACTCACCCCTTCTCCAGGCGTGCAGCCCTT
 CGGCGTGCCGCTGTCATGCCACCAGTGTGGCAGCTGCCCTCTCGCGGCATGGAATACGGAGCCCGGG
 ATCCTGCCGTCATCCAGCCGGTGGTGGTGCAGCCGTCCTTTATGTACACAAGTCACTCCAGCAGC
 CTCTCATGGTCTCCTTATCGGAGGAGATGGAAAATTCAGTAGTAGCATGCAAGTACCTGTAATTGAATC
 ATATGAGAAGCCTATATCACAGAAAAAATTAATAAGAACTGGGATCGAACCAGAGGACAGATTAT
 TATCCTGAAGAAATGTCACCCCTTAATGAACTCAGTGTCCCCCGCAAGCATTGTTGCAAGAGAATC
 ACCCTTCGGTCACTCGTGCAGCCTGGGAAGAGACCTTTACCTGTGGAATCCCCGATACTCAAAGGAAGCG
 GAGGATACACAGATGTGATTATGATGGATGCAACAAAGTGTACTAAAAGCTCCCACTTGAAGCACAC
 AGAAGAACACACAGGAGAAAAACCTACAAATGTACATGGGAAGGGTGCACATGGAAGTTTGCTCGGT
 CTGATGAACTAACAAAGCATTTCCGAAAACATACTGGAATCAAACCTTTCCAGTGCCCGGACTGTACCG
 CAGCTTCTCCGTTCTGACCATCTTGCCTCCATAGGAAACGCCACATGCTAGTC

ACGCGTACGCGGCCGCTCGAGCAGAACTCATCTCAGAAGAGGATCTGGCAGCAATGATATCCTGGATT
 ACAAGGATGACGACGATAAGGTTTAA



[View online »](#)

Protein Sequence: >RC206262 representing NM_016531
Red=Cloning site Green=Tags(s)

MLMFDPVPVKQEAMDPVSVSYPSNYMESMKPNKYGVIYSTPLPEKFFQTPEGLSHGIQMEPVDLTVNKRS
 SPPSAGNSPSSLKFPSSHRRASPLSMPSSSPPICKYSPSPGVQPFQVPLSMPPVMAAALSRHGIRSPG
 ILPVIQPVVVQPVFFMYTSHLQQPLMVSLSEEMENSSSMQVPIESYEKPIISQKKIKIEPGIEPQRTDY
 YPEEMSPPLMNSVSPQALLQENHPSVIVQPGKRPLPVESPDTRKRRIHRCDDYDGCNKVYTKSSHLKAH
 RRTHTGEKPYKCTWEGCTWKFARSDLTRHFRKHTGIKPFQCPDCDRSFSRSDHLALHRKRHMLV

TRTRPLEQKLISEEDLAANDILDYKDDDDKV

Chromatograms: https://cdn.origene.com/chromatograms/ja1557_h11.zip

Restriction Sites: SgfI-MluI

Cloning Scheme:



ACCN: NM_016531

ORF Size: 1035 bp

OTI Disclaimer: The molecular sequence of this clone aligns with the gene accession number as a point of reference only. However, individual transcript sequences of the same gene can differ through naturally occurring variations (e.g. polymorphisms), each with its own valid existence. This clone is substantially in agreement with the reference, but a complete review of all prevailing variants is recommended prior to use. [More info](#)

OTI Annotation: This clone was engineered to express the complete ORF with an expression tag. Expression varies depending on the nature of the gene.

Components: The ORF clone is ion-exchange column purified and shipped in a 2D barcoded Matrix tube containing 10ug of transfection-ready, dried plasmid DNA (reconstitute with 100 ul of water).

Reconstitution Method:

1. Centrifuge at 5,000xg for 5min.
2. Carefully open the tube and add 100ul of sterile water to dissolve the DNA.
3. Close the tube and incubate for 10 minutes at room temperature.
4. Briefly vortex the tube and then do a quick spin (less than 5000xg) to concentrate the liquid at the bottom.
5. Store the suspended plasmid at -20°C. The DNA is stable for at least one year from date of shipping when stored at -20°C.

RefSeq: [NM_016531.6](#)

RefSeq Size: 2873 bp

RefSeq ORF: 1038 bp

Locus ID: 51274

UniProt ID: [P57682](#)

Cytogenetics: 4p14

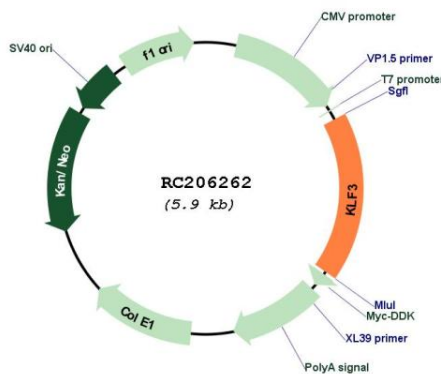
Domains: zf-C2H2

Protein Families: Transcription Factors

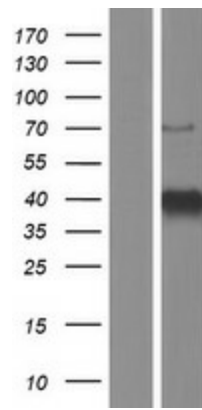
MW: 38.6 kDa

Gene Summary: Binds to the CACCC box of erythroid cell-expressed genes. May play a role in hematopoiesis (By similarity).[UniProtKB/Swiss-Prot Function]

Product images:



Circular map for RC206262



Western blot validation of overexpression lysate (Cat# [LY413925]) using anti-DDK antibody (Cat# [TA50011-100]). Left: Cell lysates from untransfected HEK293T cells; Right: Cell lysates from HEK293T cells transfected with RC206262 using transfection reagent MegaTran 2.0 (Cat# [TT210002]).