

## Product datasheet for **RC206259**

### GSPT2 (NM\_018094) Human Tagged ORF Clone

#### Product data:

Product Type:	Expression Plasmids
Product Name:	GSPT2 (NM_018094) Human Tagged ORF Clone
Tag:	Myc-DDK
Symbol:	GSPT2
Synonyms:	ERF3B; GST2
Mammalian Cell Selection:	Neomycin
Vector:	pCMV6-Entry (PS100001)
E. coli Selection:	Kanamycin (25 ug/mL)



[View online »](#)

**ORF Nucleotide Sequence:**

>RC206259 ORF sequence  
 Red=Cloning site Blue=ORF Green=Tags(s)

TTTTGTAATACGACTCACTATAGGGCGGCCGGGAATTCGTCGACTGGATCCGGTACCGAGGAGATCTGCC  
 GCC**CGGATCGCC**

ATGGATTCGGGTAGCAGCAGCAGCGACTCGGCGCCGATTGCTGGGACCAGGTGGACATGGAATCCACGG  
 GGTCGGCCCCGAGCGGGATGGAGTCTCCTCTGCGGTGGCCGAGGCCAGCGCGAGCCCCTCAGCTCGGC  
 TTTCAGCCGTAAGCTCAACGTCAACGCCAAGCCCTTCGTGCCTAACGTACACGCCCGGAGTTCGTGCCG  
 TCCTTCTGCGGGGCCGACTCAGCCGCCACCCTCCCGCCGGCTCCGGCAGCAACGATGAAACCTGCA  
 CCGGCGCGGGATACCCTCAAGGTAAAAGGATGGGACGGGGGGCACCTGTGGAACCTCCCGAGAGGAACC  
 GTTAGTGTGCTTGAAGTTCCAATTACGCGGTTACCATGGAACCTTTCAGAACCTGTTGTAGAAAATGGA  
 GAGGTGGAATGGCCCTAGAAGAATCATGGGAGCACAGTAAAGAAGTAAGTGAAGCCGAGCCTGGGGGTG  
 GTTCTCGGGAGATTCAGGGCCCCAGAAGAAAGTGGCCAGGAAATGATGGAGGAAAAAGAGGAAATAAG  
 AAAATCCAAATCTGTGATCGTACCCTCAGGTGCACCTAAGAAAGAACACGTAATGTAGTATTCATTGGC  
 CATGTAGACGCTGGCAAGTCAACCATCGGAGGACAGATAATGTTTTGACTGGAATGGTTGACAAAAGAA  
 CACTGGAGAAATATGAAAGAGAAGCTAAGGAAAAAACAGAGAAAACCTGGTATTTGTCCTGGGCCTAGA  
 TACAAATCAGGAGGAACGAGACAAGGTAAGGTAAGGTAAGGTAAGGTAAGGTAAGGTAAGGTAAGGTAAGG  
 AAACATTTCAAAATTTAGATGCCCTGGCCACAAGAGTTTTGTCCCAATATGATTGGTGGTGTCTCTC  
 AAGCTGATTTGGCTGTGCTGGTCATCTCTGCCAGGAAAGGAGAGTTTTGAAACTGGATTTGAAAAAGTGG  
 ACAGACAAGAGAACATGCGATGTTGGCAAAAACGGCAGGGTAAAACATTTAATAGTGCTTATTAATAAG  
 ATGGATGATCACACAGTAAATTTGGAGCATCGAGAGATATGAAGAATGTAAGAAAAACTGGTGCCTTTT  
 TGAAAAAAGTAGGCTTCAGTCCAAAAAAGGACATTCACCTTATGCCCTGCTCAGGACTGACCGGAGCAAA  
 TATTAAGAGCAGTCAGATTTCTGCCCTTGGTACTGACTGGATTACCATTTATCCGATTTGGATAACTTG  
 CCAAACTTCAACAGATCAATTGATGGACCAATAAGACTGCCAATTGTGGATAAGTACAAAGATATGGGCA  
 CTGTGGTCTGGGAAAGCTGGAATCCGGGTCCATTTTTAAAGGCCAGCAGCTCGTGATGATGCCAAACAA  
 GCACAATGTAAGATTCTTGAATACTTTCTGATGATACTGAAACTGATTTGTAGCCCCAGGTGAAAAAC  
 CTCAAAATCAGACTGAAGGGAATTGAAGAAGAAGAGATTCTCCAGGATTCATACTTTGTGATCCTAGTA  
 ACCTCTGCCATTCTGGACGCACGTTTGTGTTGATAGTATTGAGCACAAATCCATCATCTGCC  
 AGGTTATAATGCGGTGCTGCACATTACTTGTATTGAGGAAGTTGAGATAACAGCGTTAATCTCCTTG  
 GTAGACAAAAATCAGGAGAAAAAGTAAAGACACGACCCCGCTTCGTGAAACAAGATCAAGTATGCATTG  
 CTGTTTTAAGGACAGCAGGAACCATCTGCTCGAGACGTTCAAAGATTTCTCAGATGGTTCGTTTTAC  
 TTTAAGAGATGAGGGTAAGACCATTGCAATTGAAAAAGTTCTGAAATTGGTCCAAGAGAAGGAC

**ACGCGT**ACGCGGCCGCTCGAGCAGAACTCATCTCAGAAGAGGATCTGGCAGCAATGATATCCTGGATT  
 ACAAGGATGACGACGATAAGGTTTAA

**Protein Sequence:**

>RC206259 protein sequence  
 Red=Cloning site Green=Tags(s)

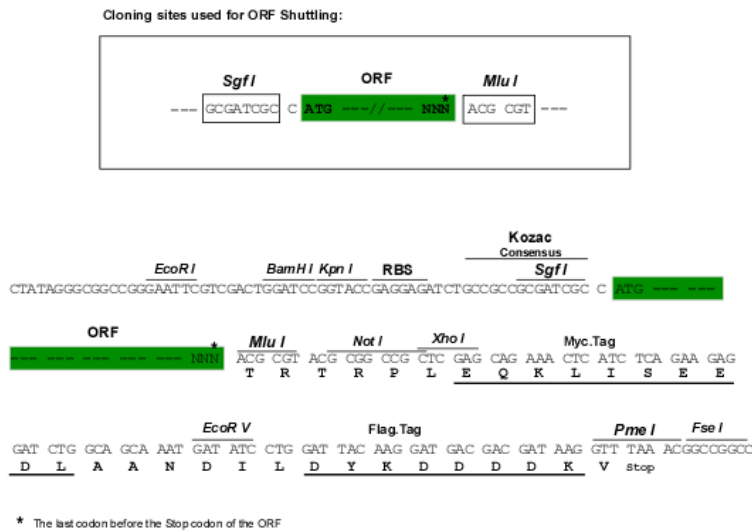
MDSGSSSSDSAPDCWDQVDMESTGSAPSGDGVSSAVAEAQREPLSSAFSRKLNVNAPFVFPNVHAAEFVP  
 SFLRGPTQPPTLPAGSGSNDCTGAGYPQKRMGRGAPVEPSREEPLVSLEGSNSAVTMELSEPVVENG  
 EVEMALEESWEHSKEVSEAEPPGGSSGDSGPPEESGQEMMEEKEEIRKSKSVIIVPSGAPKKEHVNVVFIG  
 HVDAGKSTIGGQIMFLTGMVDKRTLKYEYERAEKKNRETWYLSWALDTNQEERDKGKTVEVGRAYFETER  
 KHFTILDAPGHKSFVPMNIGGASQADLAVLVISARKGEFETGFEKGGQTRHAMLAKTAGVKHLIVLINK  
 MDHTVNWNSIEREYEECKELVPFLKQVGFSPKDIHFMPCSGLTGANIKEQSDFCPWYTGLPFIPYLDNL  
 PNFNRSIDGPIRLPIVDKYKDMGTVVVLGKLESGSIFKGGQLVMMPNKHNVVGLISDDTETDFVAPGEN  
 LKIRLKGIEEEEILPGFILCDPSNLCHSGRTFDVQIVIEHKSIIICPGYNAVLHIHTCIEEVEITALISL  
 VDKKSGEKSCTRPRFVKQDQVCIARLRTAGTICLETFKDFPQMGFRFTLRDEGKTAIGKVLKLVQEKD

**TR**TRPLEQKLISEEDLAANDILDYKDDDDKV

Chromatograms: [https://cdn.origene.com/chromatograms/mk6139\\_b08.zip](https://cdn.origene.com/chromatograms/mk6139_b08.zip)

Restriction Sites: SgfI-MluI

Cloning Scheme:



ACCN: NM\_018094

ORF Size: 1884 bp

OTI Disclaimer: The molecular sequence of this clone aligns with the gene accession number as a point of reference only. However, individual transcript sequences of the same gene can differ through naturally occurring variations (e.g. polymorphisms), each with its own valid existence. This clone is substantially in agreement with the reference, but a complete review of all prevailing variants is recommended prior to use. [More info](#)

OTI Annotation: This clone was engineered to express the complete ORF with an expression tag. Expression varies depending on the nature of the gene.

Components: The ORF clone is ion-exchange column purified and shipped in a 2D barcoded Matrix tube containing 10ug of transfection-ready, dried plasmid DNA (reconstitute with 100 ul of water).

Reconstitution Method:

1. Centrifuge at 5,000xg for 5min.
2. Carefully open the tube and add 100ul of sterile water to dissolve the DNA.
3. Close the tube and incubate for 10 minutes at room temperature.
4. Briefly vortex the tube and then do a quick spin (less than 5000xg) to concentrate the liquid at the bottom.
5. Store the suspended plasmid at -20°C. The DNA is stable for at least one year from date of shipping when stored at -20°C.

RefSeq: [NM\\_018094.5](#)

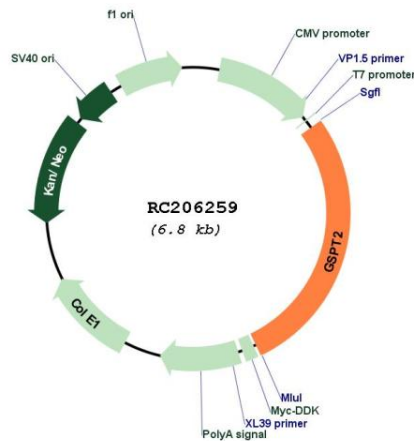
RefSeq Size: 2861 bp

RefSeq ORF: 1887 bp

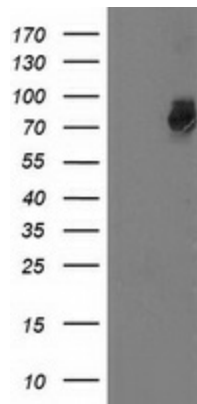
**Locus ID:** 23708  
**UniProt ID:** [Q8IYD1](#)  
**Cytogenetics:** Xp11.22  
**Domains:** GTP\_EFTU, GTP\_EFTU\_D3, GTP\_EFTU\_D2  
**MW:** 69 kDa

**Gene Summary:** This gene encodes a GTPase that belongs to the GTP-binding elongation factor family. The encoded protein is a polypeptide release factor that complexes with eukaryotic peptide chain release factor 1 to mediate translation termination. This protein may also be involved in mRNA stability.[provided by RefSeq, Mar 2010]

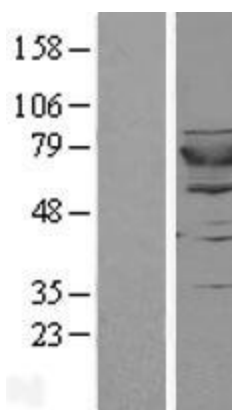
### Product images:



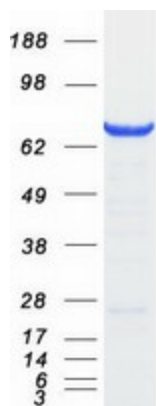
Circular map for RC206259



HEK293T cells were transfected with the pCMV6-ENTRY control (Cat# [PS100001], Left lane) or pCMV6-ENTRY GSPT2 (Cat# RC206259, Right lane) cDNA for 48 hrs and lysed. Equivalent amounts of cell lysates (5 ug per lane) were separated by SDS-PAGE and immunoblotted with anti-GSPT2(Cat# [TA503066]). Positive lysates [LY402649] (100ug) and [LC402649] (20ug) can be purchased separately from OriGene.



Western blot validation of overexpression lysate (Cat# [LY402649]) using anti-DDK antibody (Cat# [TA50011-100]). Left: Cell lysates from untransfected HEK293T cells; Right: Cell lysates from HEK293T cells transfected with RC206259 using transfection reagent MegaTran 2.0 (Cat# [TT210002]).



Coomassie blue staining of purified GSPT2 protein (Cat# [TP306259]). The protein was produced from HEK293T cells transfected with GSPT2 cDNA clone (Cat# RC206259) using MegaTran 2.0 (Cat# [TT210002]).