

## Product datasheet for **RC206258**

### KLHDC8A (NM\_018203) Human Tagged ORF Clone

#### Product data:

Product Type:	Expression Plasmids
Product Name:	KLHDC8A (NM_018203) Human Tagged ORF Clone
Tag:	Myc-DDK
Symbol:	KLHDC8A
Mammalian Cell Selection:	Neomycin
Vector:	pCMV6-Entry (PS100001)
E. coli Selection:	Kanamycin (25 ug/mL)
ORF Nucleotide Sequence:	>RC206258 ORF sequence Red=Cloning site Blue=ORF Green=Tags(s)

TTTTGTAATACGACTCACTATAGGGCGGCCGGAATTCGTCGACTGGATCCGGTACCGAGGAGATCTGCC  
GCC**CGATCGCC**

ATGGAGGTGCCTAACGTCAAGGACTTCCAGTGAAGCGCCTGGCGCCACTGCCAGCCGCCGGTCTACT  
GCTCCCTGCTGGAGACCGGGGCCAGGTCTATGCCATCGGGGATGTGACGACAACGGCGTCCCATGGA  
CTGCTTCGAGGTCTACTCCCGGAGGCCGACAGTGGACCGCCTTGCCCCGGCTGCCACAGCACGGGCG  
GGGTGGCCGTCACCGCCTGGGAAGCGGATCATGGTATTGGGGCGTGGCACCAATCAGTGCCCC  
TGAAGTCTGGAGATGTACAACATCGATGAGGGCAAGTGAAGAAGAGGAGCATGCTCGTGAGGCCCG  
CATGGGCATTTCTGTACGGCCAAAGATTACCGAGTATATGCGGCAGCGGGATGGGCCTGGACCTACGT  
CCACACAACCACCTCAAACACTATGACATGCTGAAGGACATGTGGTGTCCCTAGCACACATGCCACCC  
CGAGATATGCTGCCACCTCCTTCTCCGAGGCTCCAAGATCTACGTGCTGGGGGACGACAGTCCAAGTA  
CGCGGTCAACGCTTTCGAGGTCTTTGACATCGAGACTCGCTCCTGGACCAAGTTTCCAACATTCCTAT  
AAGCGGCCTTCTCCAGCTTTGTGACCCTGGACAACCCTGTACAGCCTAGGAGGCTGCGGCAAGGTC  
GCCTCTACCGGCAGCCAAAGTTCCTGCGGACGATGGACGTGTTGACATGGAACAGGGGGATGGCTGAA  
GATGGAACGATCGTTCTTCTCAAGAAGCGCGGCGAGATTTTGTGGCTGGCTCTCTGAGTGGACGGGTC  
ATAGTGGCTGGGGACTTGGGAATCAACCCACTGTCCTGGAGACGCGGAAGCATTCCACCCAGGAAGA  
ACAAATGGGAGATCCTCCCTGCCATGCCACACCCCGCTGTGCCTGCTCCAGCATAGTCGTAAGAAGTCT  
CCTCTCGCCGTGGGAGGTGTCAACCAGGTCTGAGTGACGACAGTGGAGGCCCTGTGTCTCTGACTCC

**ACGCGT**ACGCGGCCGCTCGAGCAGAACTCATCTCAGAAGAGGATCTGGCAGCAAATGATATCCTGGATT  
ACAAGGATGACGACGATAAGGTTTAA



[View online »](#)

**Protein Sequence:** >RC206258 protein sequence  
Red=Cloning site Green=Tags(s)

MEVPNVKDFQWKRLAPLPSRRVYCSLLETGGQVYAIGGCDDNGVPMDCFEVYSPEADQWTALPRLPTARA  
 GVAVTALGKRIMVIGGVGTNQLPLKVVEMYNIDEGKWKRSMLREAAMGISVTAKDYRVYAAGGMGLDLR  
 PHNHLQHYDMLKDMWVSLAHMPTPRYAATSFLRGSKIYVLGGRQSKYAVNAFEVFDIETRSWTKFPNIPY  
 KRAFSFVTLDNHLYSLGGLRQGRLYRQPKFLRTMDVFDMEQGGWLKMERSFFLKKRRADFVAGSLSGRV  
 IVAGGLGNQPTVLETAFAFHPGKNKWEILPAMPTPRCACSSIVVKNCLLAVGGVNQGLSDAVEALCVSDS

TRTRPLEQKLISEEDLAANDILDYKDDDDKV

**Chromatograms:** [https://cdn.origene.com/chromatograms/mk6322\\_e03.zip](https://cdn.origene.com/chromatograms/mk6322_e03.zip)

**Restriction Sites:** Sgfl-MluI

**Cloning Scheme:**

Cloning sites used for ORF Shuttling:



\* The last codon before the Stop codon of the ORF

**ACCN:** NM\_018203

**ORF Size:** 1050 bp

**OTI Disclaimer:** The molecular sequence of this clone aligns with the gene accession number as a point of reference only. However, individual transcript sequences of the same gene can differ through naturally occurring variations (e.g. polymorphisms), each with its own valid existence. This clone is substantially in agreement with the reference, but a complete review of all prevailing variants is recommended prior to use. [More info](#)

**OTI Annotation:** This clone was engineered to express the complete ORF with an expression tag. Expression varies depending on the nature of the gene.

**Components:** The ORF clone is ion-exchange column purified and shipped in a 2D barcoded Matrix tube containing 10ug of transfection-ready, dried plasmid DNA (reconstitute with 100 ul of water).

**Reconstitution Method:**

1. Centrifuge at 5,000xg for 5min.
2. Carefully open the tube and add 100ul of sterile water to dissolve the DNA.
3. Close the tube and incubate for 10 minutes at room temperature.
4. Briefly vortex the tube and then do a quick spin (less than 5000xg) to concentrate the liquid at the bottom.
5. Store the suspended plasmid at -20°C. The DNA is stable for at least one year from date of shipping when stored at -20°C.

**RefSeq:** [NM\\_018203.3](#)

**RefSeq Size:** 3044 bp

**RefSeq ORF:** 1053 bp

**Locus ID:** 55220

**UniProt ID:** [Q8IYD2](#)

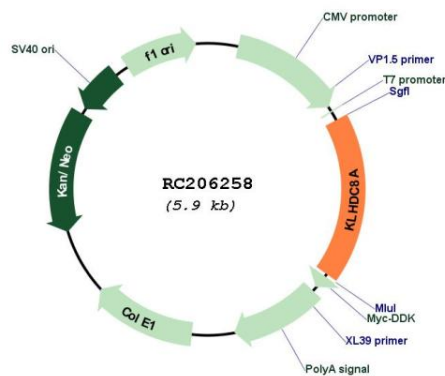
**Cytogenetics:** 1q32.1

**Domains:** Kelch

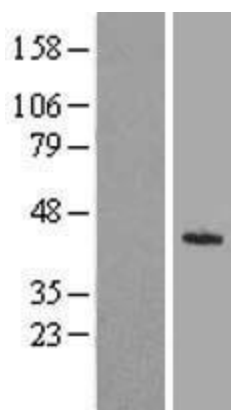
**MW:** 38.9 kDa

**Gene Summary:** This gene encodes a kelch domain-containing protein which is upregulated in cancer. Upregulated expression of the encoded protein may provide an alternative pathway for tumors to maintain aggressiveness in the absence of epidermal growth factor receptor dependence. Alternative splicing results in multiple transcript variants. [provided by RefSeq, Dec 2012]

### Product images:



Circular map for RC206258



Western blot validation of overexpression lysate (Cat# [LY413248]) using anti-DDK antibody (Cat# [TA50011-100]). Left: Cell lysates from untransfected HEK293T cells; Right: Cell lysates from HEK293T cells transfected with RC206258 using transfection reagent MegaTran 2.0 (Cat# [TT210002]).