

## Product datasheet for **RC206256**

### GIPC (GIPC2) (NM\_017655) Human Tagged ORF Clone

#### Product data:

**Product Type:** Expression Plasmids  
**Product Name:** GIPC (GIPC2) (NM\_017655) Human Tagged ORF Clone  
**Tag:** Myc-DDK  
**Symbol:** GIPC  
**Synonyms:** SEMCAP-2; SEMCAP2  
**Mammalian Cell Selection:** Neomycin  
**Vector:** pCMV6-Entry (PS100001)  
**E. coli Selection:** Kanamycin (25 ug/mL)  
**ORF Nucleotide Sequence:** >RC206256 ORF sequence  
Red=Cloning site Blue=ORF Green=Tags(s)

TTTTGTAATACGACTCACTATAGGGCGGCCGGAATTCGTCGACTGGATCCGGTACCGAGGAGATCTGCC  
GCC**CGGATCGCC**

ATGCCCTGAAGCTGCGGGGAAGAAGAAGGCCAAGTCCAAGGAGACCGCCGGCTGGTGGAGGGCGAGC  
CGACGGGCGGGCGGGGAGCCTCTCAGCGTCCCGGGCTCCCGCACGCAGGCTGGTCTCCACGCGCA  
GCTGGCGCACGGTAGTCCACGGGCCGAGTGGAGGGCTTCTCCAGCATCCAGGAGCTCTACGCCAGATC  
GCGGGCGCGTTTAAATCTCGCCGTCGGAGATCTTATATTGCACTTTAAACACACCTAAAATTGACATGG  
AAAGACTCTTAGGAGACAAGTACTAGGACTAGAAGATTTTATTTGCCCATGTGAAAGGAATCGAAAAAGA  
AGTGAATGTGTATAAATCTGAGGATTCCTTGGTCTCACCATTACAGATAATGGTGTGGCTATGCTTTT  
ATAAAGAGAATTAAGATGGTGGTGTATTGACTCAGTTAAAACAATCTGTGTTGGGGATCATATTGAAT  
CCATAAATGGAGAAAATATTGTTGGGTGGCGTCACTATGATGTTGCTAAGAAGTTAAAGGAATAAAAAA  
GGAGGAAGTCTTTACTATGAAGTTAATAGAACCTAAGAAGGCATTTGAAATAGAGCCGAGGTCAAAGGCT  
GGAAAGTCATCAGGAGAAAAATTTGTTGTGGAAGGGCAACACTTCGCCCTGAGATCAAAGGTCTGCCA  
CCGTGGAAGAAATGCCTTCTGAAACCAAGCAAAGGCAATTGAAAAGATTGATGATGTTCTTGAGTTGTA  
CATGGGAATTCGAGATATTGATTTAGCCACCACAATGTTTGAAGCTGGAAGGACAAAGTAAATCCAGAT  
GAATTTGCTGTGGCACTTGACGAAACTTTGGAGACTTTGGCTTCCAGACGAATTTGTCTTTGATGTTT  
GGGGAGTCATTGGTGTATGCCAAACGAAGAGGATTA

**ACGCGT**ACGCGGCCGCTCGAGCAGAAACTCATCTCAGAAGAGGATCTGGCAGCAAATGATATCCTGGATT  
ACAAGGATGACGACGATAAGGTTTAA



[View online »](#)

**Protein Sequence:** >RC206256 protein sequence  
Red=Cloning site Green=Tags(s)

MPLKLRGKKKAKSKETAGLVEGEPTGAGGGSLASRAPARRLVFHAQLAHGSATGRVEGFSSIQELYAQI  
 AGAFEISPSEILYCTLNTPKIDMERLLGGQLGLEDFIFAHVKGIEKEVNVYKSEDSLGLTITDNGVGYAF  
 IKRIKDGVIDSVKTICVDHIESINGENIVGWRHYDVAKKLELKEELFTMKLIEPKKAFEIEPRSKA  
 GKSSGEKIGCGRATLRLRSKGPATVEEMPSETKAKAIEKIDDVLELYMGIRDIDLATTMFEAGKDKVNPD  
 EFAVALDETLGDFAFPDEFVFDVWGVIGDAKRRL

TRTRPLEQKLISEEDLAANDILDYKDDDDKV

**Chromatograms:** [https://cdn.origene.com/chromatograms/mk6287\\_g01.zip](https://cdn.origene.com/chromatograms/mk6287_g01.zip)

**Restriction Sites:** SgfI-MluI

**Cloning Scheme:**

Cloning sites used for ORF Shuttling:



\* The last codon before the Stop codon of the ORF

**ACCN:** NM\_017655

**ORF Size:** 945 bp

**OTI Disclaimer:** The molecular sequence of this clone aligns with the gene accession number as a point of reference only. However, individual transcript sequences of the same gene can differ through naturally occurring variations (e.g. polymorphisms), each with its own valid existence. This clone is substantially in agreement with the reference, but a complete review of all prevailing variants is recommended prior to use. [More info](#)

**OTI Annotation:** This clone was engineered to express the complete ORF with an expression tag. Expression varies depending on the nature of the gene.

**Components:** The ORF clone is ion-exchange column purified and shipped in a 2D barcoded Matrix tube containing 10ug of transfection-ready, dried plasmid DNA (reconstitute with 100 ul of water).

**Reconstitution Method:**

1. Centrifuge at 5,000xg for 5min.
2. Carefully open the tube and add 100ul of sterile water to dissolve the DNA.
3. Close the tube and incubate for 10 minutes at room temperature.
4. Briefly vortex the tube and then do a quick spin (less than 5000xg) to concentrate the liquid at the bottom.
5. Store the suspended plasmid at -20°C. The DNA is stable for at least one year from date of shipping when stored at -20°C.

**RefSeq:** [NM\\_017655.3](#)

**RefSeq Size:** 2838 bp

**RefSeq ORF:** 948 bp

**Locus ID:** 54810

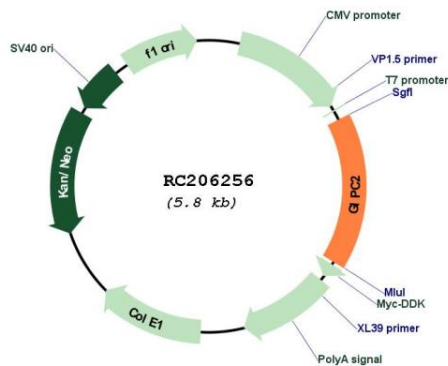
**UniProt ID:** [Q8TF65](#)

**Cytogenetics:** 1p31.1

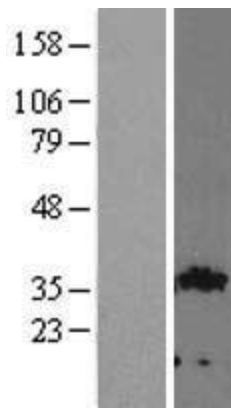
**Domains:** PDZ

**MW:** 34.3 kDa

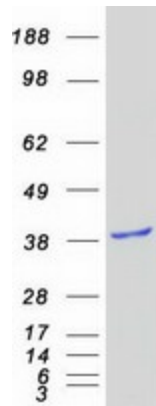
### Product images:



Circular map for RC206256



Western blot validation of overexpression lysate (Cat# [LY413653]) using anti-DDK antibody (Cat# [TA50011-100]). Left: Cell lysates from untransfected HEK293T cells; Right: Cell lysates from HEK293T cells transfected with RC206256 using transfection reagent MegaTran 2.0 (Cat# [TT210002]).



Coomassie blue staining of purified GIPC2 protein (Cat# [TP306256]). The protein was produced from HEK293T cells transfected with GIPC2 cDNA clone (Cat# RC206256) using MegaTran 2.0 (Cat# [TT210002]).