

## Product datasheet for RC206255

### AMBRA1 (NM\_017749) Human Tagged ORF Clone

#### Product data:

Product Type:	Expression Plasmids
Product Name:	AMBRA1 (NM_017749) Human Tagged ORF Clone
Tag:	Myc-DDK
Symbol:	AMBRA1
Synonyms:	DCAF3; WDR94
Mammalian Cell Selection:	Neomycin
Vector:	pCMV6-Entry (PS100001)
E. coli Selection:	Kanamycin (25 ug/mL)
ORF Nucleotide Sequence:	>RC206255 ORF sequence Red=Cloning site Blue=ORF Green=Tags(s)

TTTTGTAATACGACTCACTATAGGGCGCCGGGAATTCGTCGACTGGATCCGGTACCGAGGAGATCTGCC  
GCC**CGATCGCC**

ATGAAGTTGTCCAGAAAAGAATGCTGTCCGGATACTCTGGGGCGAGAACGGGGTGCTCGGGCCATGG  
GAGCTCAGCGGCTTCTGCAGGAGCTGGTAGAGGATAAAACCCGGTGGATGAAATGGGAGGGCAAGAGAGT  
AGAAGTCCGGATAGTCCACGCTCTACCTTCTTATTGGCTTCAGCCAGACAGGACTCTTTAGCCTCC  
ACCCATGTGAACCATAATATCTATATTACGGAGGTGAAGACTGGCAAGTGTGTTCCATTCCCTGATTGGAC  
ACCGCCGTAAGTCCATGGTGTGCACTTTTCATCCACCATCTCAGGCCTTATTGCTTCTGGCTGCCTAGA  
TGGGGAGGTTAGGATTTGGGATTTACACGGTGGCAGTGAAGCTGGTTCACAGATAGCAACAATGCCATT  
GCCTCCCTGGCTTCCACCCTACGGCTCAGCTCCTGCTGATTGCCACTGCCAATGAGATCCACTTCTGGG  
ACTGGAGTCGACGGGAACCCCTTGTGTGGTGAAGACAGCTAGTGAGATGGAACGGGTCCGTCTGGTGAG  
ATTTGATCCACTTGGACACTACTTACTCACAGCAATTGTTAACCCCTCTAATCAACAGGGTGATGACGAA  
CCAGAGATCCCCATAGATGGAACAGAATTATCCCACTACCGTCAGCGTGCCCTCTGCAATCACAGCCAG  
TTCGCCGACGCCTCTCCTCCACAATTTCTGCACATGCTGTCTCCCGCTCTTCTGGCATCCAGACCGA  
GCCCTTCCATCCCCGGAGCAGGCCTCGTCAACGCAGCAGGACCAGGGCCTCTGAACCGGCCGCTGCC  
TTCAGTACAGTCCAGAGCAGCACTGCCGGCAACACGCTCCGCAACCTCAGTCTGGTCTTACCCGCCGCT  
CTTTGGGAGGGCCTCTGTCTAGCCACCCTTAGGTATCACCGAGAAATAGCTCCTGGGTTGACAGGATC  
TGAGTGGACCCGGACAGTACTCAGTCTGAACTCCCGCTCTGAGGCGGAATCCATGCCCCCGCCAGAAC  
AGTGCCTCTTCGGTGAGTTTGTGTCTGTGCTGAGACAGCAGGAAGGTGGCTCTCAGGCATCTGTGTACA  
CTTCAGCCACAGAAGGGAGGGTTTTCCGGCATCAGGGTTGGCAACTGAGTCAGATGGAGGGAATGGCTC  
CAGCCAAAACAACCTCGGGCAGCATTGCCATGAGCTTCAGTGTGACCTGAGACGCTTCTTTCTGGAGTAT  
GACCGGCTTCAGGAGCTGGATCAGAGCTGAGTGGGGAAGCTCCCAGACCCAACAGGCCAGGAAATGC  
TCAACAATAACATTGAATCTGAGAGGCCAGGCCCTTCCCACCAGCCACCCACACAGCAGTGAGAACAA  
CTCCAACCTGTCCGTGGCCACCTGAATCGCTGCTGCTGCCACAATCTCCTGACCTCAACAACGAT



ACCCTGCGCTGGGAAAGAACCACACCTAACTACTCCTCTGGCGAGGCTAGTTCCTCTTGGCAGGTCCCCA  
GCTCCTTTGAGAGTGTGCCATCAAGTGGCAGCCAGTTGCCACCTCTCGAGCGGACTGAGGGCCAAACGCC  
CAGCTCCAGCAGGCTGGAGTTGAGCAGCTCTGCTAGTCCGAGGAGGAGAGGACTGTGGGGTGGCCTTT  
AACCAGGAGACAGGCCACTGGGAAAGAATTTACACCCAGTCCAGCAGATCTGGAAGTGTGTACAGGAGG  
CCTTACATCAGGATATGCCTGAGGAGAGCTCTGAGGAGGATCACTCAGGAGGAGGCTGTGGAATCTTC  
CCTCATTTTATTATCCCATTATGATGGAGCAGGATCCAGAGAGCACCCAAATTTACCCAGACCCAGCGAGA  
TTATCTCCTGCTGCATACTACGCCAGAGGATGATCCAGTATCTCTCACGGAGAGACAGTATTCGCCAGC  
GCTCCATGCGCTACCAACAGAACCCTCTCCGTTCTTCCACCTCCTCCTTCTCCTCAGACAACCAGGGTCC  
ATCAGTAGAGGGAACCGACTTGGAAATTTGAGGACTTTGAGGACAATGGTACAGATCCAGGCACCGAGCT  
CCACGCAATGCCCGATGTCTGCACCTTCGCTTGGACGCTTTGTCCAAAGCGTTTCTTGTCTGCCTGAGT  
ACTTGCCTTATGCTGGGATTTTTTATGAACGTGGACAGCCTGGCTTGGCTACTACTCTTCTGTAAACAG  
GGTCTGGCAGGGCAGTGATCGGTGATGGACAGTCTGCTGTGGCCAGTAACATTGCCAATACTACCTAC  
CGGCTCCAGTGGTGGGACTTCACTAAGTTTACCTCCCTGAAATCAGTAATGCTTCCGTGAATGTGCTGG  
TGCAGAACTGCAAGATCTACAATGATGCCAGTGTGACATTTCTGCAGATGGCCAGCTCCTGGCAGCTTT  
CATCCCCAGCAGCCAGAGGGCTTTCTGATGAAGGCATCCTGGCAGTGTACTCCCTGGCCCCCATAAC  
CTGGGCGAAATGCTCTACACCAAGCGATTTGGTCCCAATGCCATTTCCGGTGAAGCTGTCCCAATGGGCA  
GATATGTAATGGTGGGCTTGGCCTCACGAAGGATCCTGCTGCACCCCTCCACAGAGCACATGGTGGCCCA  
GGTCTTACAGGCTGCAACAGGCCATGGTGGAGAGACCTCCATGAGGAGAGTTTTTCAACGTCTTTATCCC  
ATGCTGCGGACAGCGGAGACATGTCAGTATCAACTCTGCCGTTGGCTGCCTGAGCCAGGGCTTGGCT  
TGGCCTATGGTACTAACAAAGGAGACCTGGTGTCTGCCGACCAGAGGCCTTAACTCTGGTGTGAGTA  
CTACTGGGACCAGCTGACGAGACGGTCTTCACTGTCCATTCCAACAGCAGGAGCAGCGAGCGGCCTGGA  
ACCAGCAGAGCCACATGGAGGACAGACAGAGACATGGGGCTGATGAATGCCATTGGGCTTACGCCCCGGA  
ACCTGCCACCTCAGTGACATCTCAGGGCACCGAGACTTGGCCCTTCACTGCAGAATGCCGAAACACA  
GACTGAGAGGGAGGTGCCGGAGCCAGGGACAGCCCTCAGGTCCTGGTGAAGGTGAGGGTTCAGAGTAT  
GGTGCCAGTGGAGAAGATGCGCTCAGCAGGATCCAGAGGCTGATGGCGGAGGGCGGCATGACAGCCGTGG  
TGCAGCGGGAGCAGAGCACCACCATGGCCTCCATGGGCGGCTTCGGCAACAACATCATCGTCAGCCACCG  
CATTACCCGACGCTCTCAGACGGGCACTGAACCTGGTGGCGCCACACCTCCTCACCCAGCCCTCCACC  
TCTCGGGACTGCTCCCAGAGGCCGGGCAACTGGCAGAGCGAGGCTAAGCCCCGGACAGCTTCTGGG  
ACCAGCCTGGTACCCCTGGGCGGGAGCCAACCCAGCCAACCTGCCCTCTTCTCCCTGTCCCCATTCC  
TGTTTCCCTTCCCAGCGCTGAGGGACCAACCGTCCACTGCGAGTTGACCAATAACAACCACCTTCTGGAT  
GGTGGCAGCAGCAGGGGGACGCTGCAGGCCCTAGGGGAGAACCACGGAACAGG

ACGCGTACGCGGCGCTCGAGCAGAACTCATCTCAGAAGAGGATCTGGCAGCAAATGATATCCTGGATT  
ACAAGGATGACGACGATAAGGTTTAA

Protein Sequence: >RC206255 protein sequence  
 Red=Cloning site Green=Tags(s)

```

MKVVPEKNAVRILWGRERGARAMGAQRLLQELVEDKTRWMKWEQKRVLPDSRSTFLLAFSPDRLLAS
THVNHNIYITEVKTGKCVHSLIGHRRTPWCVTFHPTISGLIASGCLDGEVRIWDLHGGSESWFTDSNNAI
ASLAFHPTAQLLLIATANEIHFWDWSRREPFVAVKTASEMVRVLRVFDPLGHYLLTAIVNPSNQGDDE
PEIPIDGTELSHYRQRALLQSQPVRRTPLLLHNLHMLSSRSSGIQTEPFHPPEQASSTQQDQGLLRPSA
FSTVQSSTAGNTRLRNLGLPTRRSLGGPLSSHPSRYHREIAPGLTGSEWTRTVLSLNSRSEAESMPPT
SASSVSLLSVLRQQEGGSQASVYTSATEGRGFPASGLATESDGGNGSSQNNSGSIRHELQCDLRRFFLEY
DRLQELDQSLSGEAPQTQQAQEMLNNNIESERPGPSHQPTPHSSENNLNRGHLNRCRACHNLLTFNND
TLRWERTTPNYSSGEASSWQVPSSFESVPSGSQLPPLERTEGQTPSSSRELESSASPQEERTVGVAF
NQETGHWERIYQSSRSGTVSQEALHQDMPEESSEEDSLRRRLESSLISLSRYDGAGSREHPIYDPPAR
LSPAAYYAQRMIQYLSRRDSIRQSMRYQQNRLRSSTSSSSDNQGPSVEGTDLEFDFEDNGDRSRHRA
PRNARMSAPSLGRFVPRRFLPEYLPYAGIFHERGQPLATHSSVNRVLGAVIGDQSAVASNIANTTY
RLQWDFTKFDLPEISNASVNVLVQNCKIYNDASCDISADGQLLAAFIPSSQRFDPDEGILAVYSLAPHN
LGEMLYTKRFGPNAISVLSLPMGRYVMVGLASRILLHPSTEHMVAQVFRLLQQAHGGETSMRRVFNVLYP
MPADQRRHVSINSARWLPEPGLGLAYGTNKGDVICRPEALNSGVYEWQDLNETVFTVHSNSRSPERG
TSRATWRTRDRDMLMNAIGLQPRNPATSVTSQGTETLALQLQNAETQTEREVPEPGTAASGPGESEY
GASGEDALSRIQRLMAEGGMAVVQREQSTTMASMGFGNNIIVSHRIHRSSQTGTEPGAHTSSPQPST
SRGLLPEAGQLAERGLSPRTASWDQPGTPGREPTQPTLPSSSPVIPVSLPSAEGPTVHCELNNHLLD
GGSSRGAAGPRGEPNR
  
```

TRTRPLEQKLISEEDLAANDILDYKDDDDKV

Chromatograms: [https://cdn.origene.com/chromatograms/mk6290\\_e05.zip](https://cdn.origene.com/chromatograms/mk6290_e05.zip)

Restriction Sites: SgfI-MluI

Cloning Scheme:



ACCN: NM\_017749

ORF Size: 3624 bp

**OTI Disclaimer:** Due to the inherent nature of this plasmid, standard methods to replicate additional amounts of DNA in E. coli are highly likely to result in mutations and/or rearrangements. Therefore, OriGene does not guarantee the capability to replicate this plasmid DNA. Additional amounts of DNA can be purchased from OriGene with batch-specific, full-sequence verification at a reduced cost. Please contact our customer care team at [custsupport@origene.com](mailto:custsupport@origene.com) or by calling 301.340.3188 option 3 for pricing and delivery.

The molecular sequence of this clone aligns with the gene accession number as a point of reference only. However, individual transcript sequences of the same gene can differ through naturally occurring variations (e.g. polymorphisms), each with its own valid existence. This clone is substantially in agreement with the reference, but a complete review of all prevailing variants is recommended prior to use. [More info](#)

**OTI Annotation:** This clone was engineered to express the complete ORF with an expression tag. Expression varies depending on the nature of the gene.

**Components:** The ORF clone is ion-exchange column purified and shipped in a 2D barcoded Matrix tube containing 10ug of transfection-ready, dried plasmid DNA (reconstitute with 100 ul of water).

**Reconstitution Method:**

1. Centrifuge at 5,000xg for 5min.
2. Carefully open the tube and add 100ul of sterile water to dissolve the DNA.
3. Close the tube and incubate for 10 minutes at room temperature.
4. Briefly vortex the tube and then do a quick spin (less than 5000xg) to concentrate the liquid at the bottom.
5. Store the suspended plasmid at -20°C. The DNA is stable for at least one year from date of shipping when stored at -20°C.

**Note:** Plasmids are not sterile. For experiments where strict sterility is required, filtration with 0.22um filter is required.

**RefSeq:** [NM\\_017749.3](#)

**RefSeq Size:** 5034 bp

**RefSeq ORF:** 3627 bp

**Locus ID:** 55626

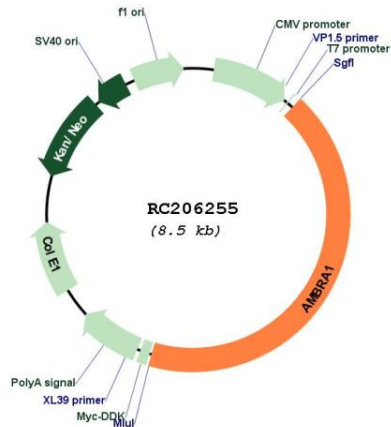
**UniProt ID:** [Q9C0C7](#)

**Cytogenetics:** 11p11.2

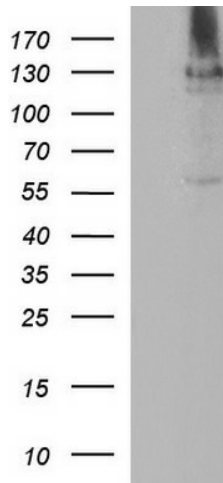
**MW:** 132.8 kDa

**Gene Summary:** Regulates autophagy and development of the nervous system. Involved in autophagy in controlling protein turnover during neuronal development, and in regulating normal cell survival and proliferation (By similarity).[UniProtKB/Swiss-Prot Function]

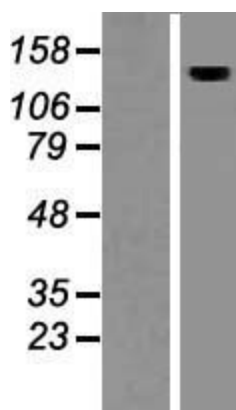
Product images:



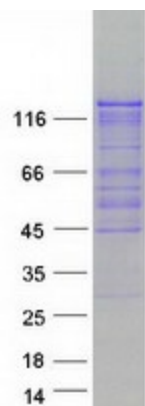
Circular map for RC206255



HEK293T cells were transfected with the pCMV6-ENTRY control (Cat# [PS100001], Left lane) or pCMV6-ENTRY AMBRA1 (Cat# RC206255, Right lane) cDNA for 48 hrs and lysed. Equivalent amounts of cell lysates (5 ug per lane) were separated by SDS-PAGE and immunoblotted with anti-AMBRA (Cat# [TA590501]). Positive lysates [LY413575] (100ug) and [LC413575] (20ug) can be purchased separately from OriGene.



Western blot validation of overexpression lysate (Cat# [LY413575]) using anti-DDK antibody (Cat# [TA50011-100]). Left: Cell lysates from untransfected HEK293T cells; Right: Cell lysates from HEK293T cells transfected with RC206255 using transfection reagent MegaTran 2.0 (Cat# [TT210002]).



Coomassie blue staining of purified AMBRA1 protein (Cat# [TP306255]). The protein was produced from HEK293T cells transfected with AMBRA1 cDNA clone (Cat# RC206255) using MegaTran 2.0 (Cat# [TT210002]).