

Product datasheet for RC206253

Inhibin beta B (INHBB) (NM_002193) Human Tagged ORF Clone

Product data:

Product Type:	Expression Plasmids
Product Name:	Inhibin beta B (INHBB) (NM_002193) Human Tagged ORF Clone
Tag:	Myc-DDK
Symbol:	Inhibin beta B
Mammalian Cell Selection:	Neomycin
Vector:	pCMV6-Entry (PS100001)
E. coli Selection:	Kanamycin (25 ug/mL)
ORF Nucleotide Sequence:	>RC206253 ORF sequence Red=Cloning site Blue=ORF Green=Tags(s)

TTTTGTAATACGACTCACTATAGGGCGGCCGGAATTCGTCGACTGGATCCGGTACCGAGGAGATCTGCC
GCCCGATCGCC

ATGGACGGGCTGCCCGTTCGGGCGCTGGGGCCGCCTGCCTTCTGCTGCTGGCGGCCGGCTGGCTGGGGC
CTGAGGCTGGGGCTCACCCACGCCCCCGCAGCCCTGCCGCGCAGCCGCCACCCCGCCACCCGGATC
CCCGGGTGGCTCGCAGGACACCTGTACGTCGTGCGGGCGGCTTCCGGCGCCAGAGGAGCTCGGCCGAGTG
GACGGCGACTTCTGGAGGCGGTGAAGCGGCACATCTTGAGCCGCTGCAGATGCGGGGCCGGAAGGTGCGCGA
TCACGCACGCGTGCCTAAGCCGCCATGGTCACGGCCCTGCGCAAGTGCACGCGGCAAGGTGCGCGA
GGACGGCCGCGTGGAGATCCCGCACCTCGACGGCCAGCCAGCCCGGGCGCCGACGGCCAGGAGCGCGTT
TCCGAAATCATCAGCTTCGCGGAGACAGATGGCCTCGCCTCCTCCGGGTCCGCCTATACTTCTTCATCT
CCAACGAAGGCAACCAGAACCTGTTTGGTCCAGGCCAGCCTGTGGCTTACCTGAAACTCCTGCCCTA
CGTCTGGAGAAGGGCAGCCGGCGAAGGTGCGGGTCAAAGTGTACTTCCAGGAGCAGGGCCACGGTGAC
AGGTGGAACATGGTGGAGAAGAGGGTGGACCTCAAGCGCAGCGGTGGCATACTTCCACTCACGGAGG
CCATCCAGGCTTGTGGAGCGGGCGAGCGGCGACTCAACCTAGACGTGCAGTGTGACAGCTGCCAGGA
GCTGGCCGTGGTCCGGTGTTCGTGGACCCAGGCGAAGAGTCGACCCGGCCCTTGTGGTGGTGCAGGCT
CGGCTGGGCGACAGCAGGCACCGCATTGCAAGCGAGGCTGGAGTGCAGTGGCCGGACCAACCTCTGTT
GCAGGCAACAGTTCTTACATTGACTTCCGCCTCATCGGCTGGAACGACTGGATCATAGCACCACAGCTA
CTACGGAACTACTGTGAGGGCAGCTGCCAGCCTACCTGGCAGGGGTCCCGGGCTCTGCCTCCTCTTC
CACACGGCTGTGGTGAACCAGTACCGCATGCGGGTCTGAACCCCGGCACGGTGAACCTCTGCTGCATTC
CCACCAAGCTGAGCACCATGTCCATGCTGACTTCGATGATGAGTACAACATCGTCAAGCGGGACGTGCC
CAACATGATTGTGGAGGAGTGGGCTGCGCC

ACGCGTACGCGGGCGCTCGAGCAGAACTCATCTCAGAAGAGGATCTGGCAGCAATGATATCCTGGATT
ACAAGGATGACGACGATAAGGTTTAA



[View online »](#)

Protein Sequence: >RC206253 protein sequence
Red=Cloning site Green=Tags(s)

MDGLPGRALGAACLLLLAAGWLGPEAWGSPTPPPTPAAQPPPPPPGSPGGSQDTCTSCGGFRRPEELGRV
 DGDGFLEAVKRHILSRLQMRGRPNITHAVPKAAMVTALRKLHAGKVREDGRVEIPHLDDGHASPGADGQERV
 SEIISFAETDGLASSRRLYFFISNEGNQNLFVVQASLWLYLKLPPYVLEKGSRRKVRVKVYVFQEQQHGD
 RWNMVEKRVLDLKRSGWHTFPLTEAIQALFERGERRLNLDVQDCSQELAVVPVFDVDPGEESHRRPFVVVQA
 RLGDSRHRIRKRGLECDGRNLCCRQFFIDFRLIGWNDWIIAPTSSYGNVCEGSCPAYLAGVPGSASSF
 HTAVVNQYRMRGLNPGTVNSCCIPTKLTSMMLYFDDEYNIVKRDVPMIVVEECGA

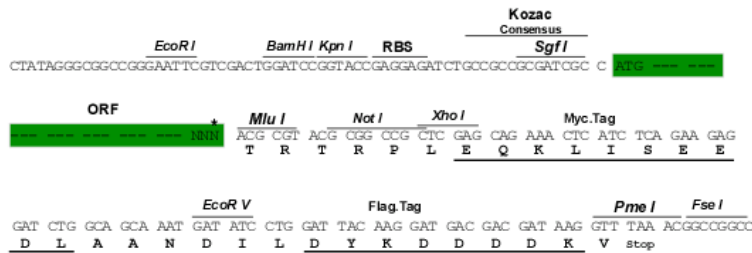
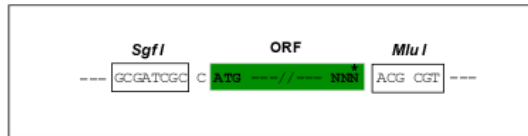
TRTRPLEQKLISEEDLAANDILDYKDDDDKV

Chromatograms: https://cdn.origene.com/chromatograms/mk6803_g11.zip

Restriction Sites: SgfI-MluI

Cloning Scheme:

Cloning sites used for ORF Shuttling:



* The last codon before the Stop codon of the ORF

ACCN: NM_002193

ORF Size: 1221 bp

OTI Disclaimer: The molecular sequence of this clone aligns with the gene accession number as a point of reference only. However, individual transcript sequences of the same gene can differ through naturally occurring variations (e.g. polymorphisms), each with its own valid existence. This clone is substantially in agreement with the reference, but a complete review of all prevailing variants is recommended prior to use. [More info](#)

OTI Annotation: This clone was engineered to express the complete ORF with an expression tag. Expression varies depending on the nature of the gene.

Components: The ORF clone is ion-exchange column purified and shipped in a 2D barcoded Matrix tube containing 10ug of transfection-ready, dried plasmid DNA (reconstitute with 100 ul of water).

Reconstitution Method:

1. Centrifuge at 5,000xg for 5min.
2. Carefully open the tube and add 100ul of sterile water to dissolve the DNA.
3. Close the tube and incubate for 10 minutes at room temperature.
4. Briefly vortex the tube and then do a quick spin (less than 5000xg) to concentrate the liquid at the bottom.
5. Store the suspended plasmid at -20°C. The DNA is stable for at least one year from date of shipping when stored at -20°C.

RefSeq: [NM_002193.4](#)

RefSeq Size: 3218 bp

RefSeq ORF: 1224 bp

Locus ID: 3625

UniProt ID: [P09529](#)

Cytogenetics: 2q14.2

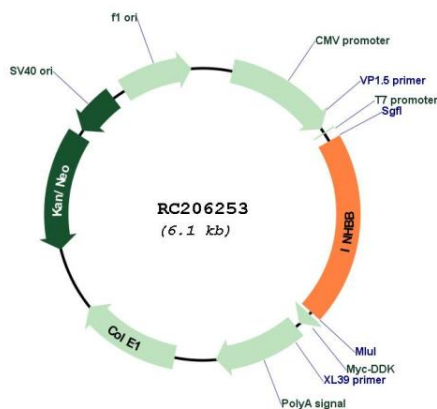
Protein Families: Druggable Genome, Secreted Protein

Protein Pathways: Cytokine-cytokine receptor interaction, TGF-beta signaling pathway

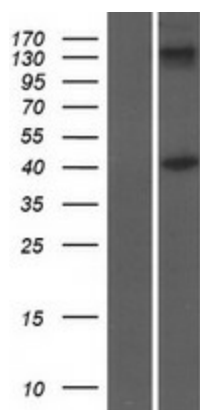
MW: 45.2 kDa

Gene Summary: This gene encodes a member of the TGF-beta (transforming growth factor-beta) superfamily of proteins. The encoded preproprotein is proteolytically processed to generate a subunit of the dimeric activin and inhibin protein complexes. These complexes activate and inhibit, respectively, follicle stimulating hormone secretion from the pituitary gland. Polymorphisms near this gene are associated with pre-eclampsia in female human patients. [provided by RefSeq, Aug 2016]

Product images:



Circular map for RC206253



Western blot validation of overexpression lysate (Cat# [LY419476]) using anti-DDK antibody (Cat# [TA50011-100]). Left: Cell lysates from untransfected HEK293T cells; Right: Cell lysates from HEK293T cells transfected with RC206253 using transfection reagent MegaTran 2.0 (Cat# [TT210002]).