

Product datasheet for RC206252L1

JPH3 (NM_020655) Human Tagged Lenti ORF Clone

Product data:

Product Type:	Expression Plasmids
Product Name:	JPH3 (NM_020655) Human Tagged Lenti ORF Clone
Tag:	Myc-DDK
Symbol:	JPH3
Synonyms:	CAGL237; HDL2; JP-3; JP3; TNRC22
Mammalian Cell Selection:	None
Vector:	pLenti-C-Myc-DDK (PS100064)
E. coli Selection:	Chloramphenicol (34 ug/mL)
ORF Nucleotide Sequence:	The ORF insert of this clone is exactly the same as(RC206252).
Restriction Sites:	SgfI-MluI
Cloning Scheme:	

Cloning sites used for ORF Shuttling:



* The last codon before the Stop codon of the ORF.

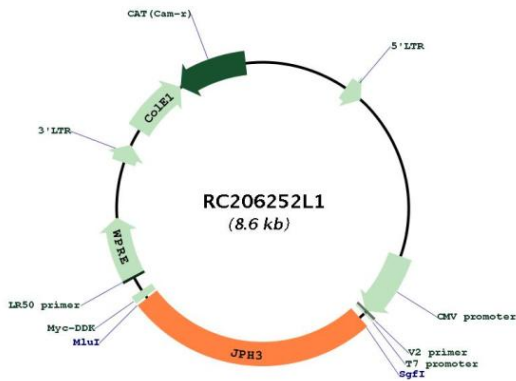
ACCN:	NM_020655
ORF Size:	2244 bp



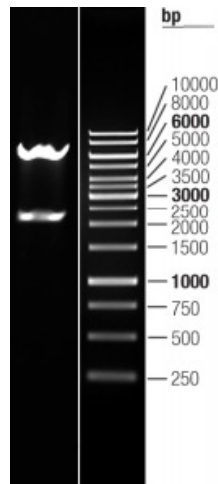
[View online >](#)

OTI Disclaimer:	The molecular sequence of this clone aligns with the gene accession number as a point of reference only. However, individual transcript sequences of the same gene can differ through naturally occurring variations (e.g. polymorphisms), each with its own valid existence. This clone is substantially in agreement with the reference, but a complete review of all prevailing variants is recommended prior to use. More info
OTI Annotation:	This clone was engineered to express the complete ORF with an expression tag. Expression varies depending on the nature of the gene.
Components:	The ORF clone is ion-exchange column purified and shipped in a 2D barcoded Matrix tube containing 10ug of transfection-ready, dried plasmid DNA (reconstitute with 100 ul of water).
Reconstitution Method:	<ol style="list-style-type: none">1. Centrifuge at 5,000xg for 5min.2. Carefully open the tube and add 100ul of sterile water to dissolve the DNA.3. Close the tube and incubate for 10 minutes at room temperature.4. Briefly vortex the tube and then do a quick spin (less than 5000xg) to concentrate the liquid at the bottom.5. Store the suspended plasmid at -20°C. The DNA is stable for at least one year from date of shipping when stored at -20°C.
RefSeq:	NM_020655.2
RefSeq Size:	3997 bp
RefSeq ORF:	2247 bp
Locus ID:	57338
UniProt ID:	Q8WXH2
Cytogenetics:	16q24.2
Protein Families:	Druggable Genome, Transmembrane
MW:	81.3 kDa
Gene Summary:	Junctional complexes between the plasma membrane and endoplasmic/sarcoplasmic reticulum are a common feature of all excitable cell types and mediate cross talk between cell surface and intracellular ion channels. The protein encoded by this gene is a component of junctional complexes and is composed of a C-terminal hydrophobic segment spanning the endoplasmic/sarcoplasmic reticulum membrane and a remaining cytoplasmic domain that shows specific affinity for the plasma membrane. CAG/CTG repeat expansion from normally 6-28 repeats to 40-59 repeats in the 3' UTR of this gene have been associated with Huntington disease-like 2 (HDL2). This gene is a member of the junctophilin gene family. Alternatively spliced transcript variants have been described for this gene. [provided by RefSeq, Jul 2016]

Product images:



Circular map for RC206252L1



Double digestion of RC206252L1 using SgfI and MluI