

Product datasheet for RC206251

5HT7 Receptor (HTR7) (NM_019860) Human Tagged ORF Clone

Product data:

Product Type:	Expression Plasmids
Product Name:	5HT7 Receptor (HTR7) (NM_019860) Human Tagged ORF Clone
Tag:	Myc-DDK
Symbol:	5HT7 Receptor
Synonyms:	5-HT7
Mammalian Cell Selection:	Neomycin
Vector:	pCMV6-Entry (PS100001)
E. coli Selection:	Kanamycin (25 ug/mL)
ORF Nucleotide Sequence:	>RC206251 representing NM_019860. Blue=ORF Red=Cloning site Green=Tag(s)

```
GCTCGTTT TAGTGAACCGTCAGAATTTTGT AATACGACTCACTATAGGGCGCCGGGAATTCGTGACTG
GATCCGGTACCGAGGAGATCTGCCGCC GCGATCGCC
ATGATGGACGTTAACAGCAGCGGCCGCCGACCTCTACGGGCACCTCCGCTCTTCTCTGCCAGAA
GTGGGGCGCGGGCTGCCGACTTGAGCCCCGACGGTGCGCGCCGACCCGGTCGCGGGCTCTGGGCGCCG
CACCTGCTGAGCGAGGTGACAGCCAGCCCGGCCACCTGGGACGCGCCCCGGACAATGCCTCCGGC
TGTGGGGAACAGATCAACTACGGCAGAGTCGAGAAAGTTGTGATCGGCTCCATCCTGACGCTCATCAG
CTGCTGACGATCGCGGCAACTGCCTGGTGGTGATCTCCGTGTGCTTCGTAAGAAGCTCCGCCAGCCC
TCCAACCTACCTGATCGTGTCCCTGGCGCTGGCCGACCTCTCGGTGGCTGTGGCGGTCATGCCCTTCGTC
AGCGTCACCGACCTCATCGGGGGCAAGTGATCTTTGGACACTTTTCTGTAATGTCTTCATCGCCATG
GACGTCATGTGCTGCACGGCCTCGATCATGACCCTGTGCGTGATCAGCATTGACAGGTACCTTGGGATC
ACAAGGCCCTCACATACCCTGTGAGGCAGAATGGGAAATGCATGGCGAAGATGATTCTCTCCGTCTGG
CTTCTCTCCGCTCCATCACCTTACCTCCACTCTTTGGATGGGCTCAGAAATGTAATGATGATAAGGTG
TGCTTGATCAGCCAGGACTTTGGCTATACGATTTACTCTACCGCAGTGGCATTTTATATCCCATGTCC
GTCATGCTTTTTCATGTAACCAGATTTACAAGGCTGCCAGGAAGAGTGTGCCAAACACAAGTTTCTC
GGCTTCCCTCGAGTGGAGCCAGACAGCGTCATCGCCCTGAATGGCATAGTGAAGCTCCAGAAGGAGGTG
GAAGAGTGTGCAAACCTTTCGAGACTCCTCAAGCATGAAAGGAAAACATCTCCATCTTTAAGCGAGAA
CAGAAAGCAGCCACCACCTGGGGATCATCGTGGGGCCTTACCGTGTGCTGGCTGCCATTTTCTCTC
CTCTCGACAGCCAGACCTTTCATCTGTGCACTTCTGCACTGTCATCCCACTGTGGGTGGAGAGGACA
TTTCTGTGGCTAGGCTATGCAAACCTCTCTCATTAAACCCTTTTATATATGCCTTCTCAACCGGGACCTG
AGGACCACCTATCGCAGCCTGCTCCAGTGCCAGTACCGGAATATCAACCGGAAGCTCTCAGCTGCAGGC
ATGCATGAAGCCCTGAAGCTTGTGAGAGGCCAGAGACCTGAGTTTGTGCTG
ACGCGTACGCGGCCGCTCGAGCAGAAACTCATCTCAGAAGAGGATCTGGCAGCAAATGATATCCTGGAT
TACAAGGATGACGACGATAAGGTTTAAACGGCCGGC
```



[View online »](#)

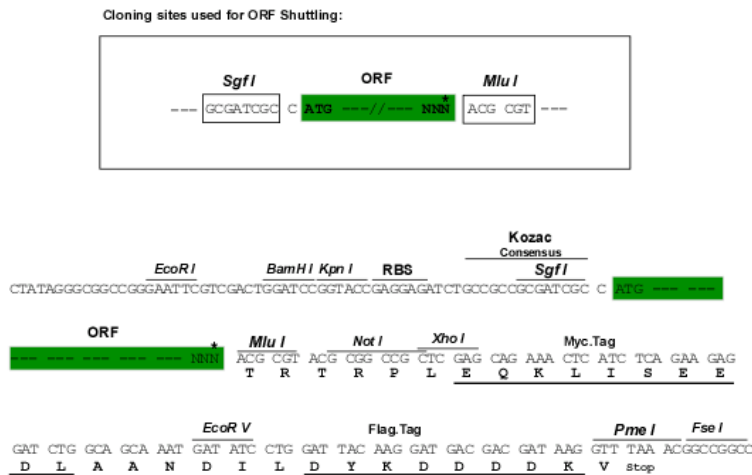
Protein Sequence: >Peptide sequence encoded by RC206251
 Blue=ORF Red=Cloning site Green=Tag(s)

MMDVNSSGRPDL YGHLRSFLLPEVGRGLPDLSPDGGADPVAGSWAPHLLESEVTASPAPTWDAPPDNASG
 CGEQIN YGRVEKVVIGSILTLITLLTIAGNCLVVISVCFVKLLRQPSNYLIVSLALADLSVAVAVMPFV
 SVTDLIGGKWI FGHFFCNVFIAMDVMCCTASIMTLCVISIDRYLGITRPLTYPVRQNGKCMAMILSVW
 LLSASITL PPLFGWAQNVNDDKVLISQDFGYTIYSTAVAFYIPMSVLMFYMQIYKAARKSAAKHKFP
 GFPRVEPDSVIALNGIVKLQKEVEECANLSRLLKHERKNISIFKREKQAATTLGIIVGAFTVCWLPFFL
 LSTARPFICGTSCSCIPLWVERTFLWLGYANSLNPFYIAFFNRDLRTTYRSLQCQYRNINRKL SAAG
 MHEALKLAERPERPEFVL
 TRTRPLEQKLISEEDLAANDILDYKDDDDKV

Chromatograms: https://cdn.origene.com/chromatograms/mk6515_f06.zip

Restriction Sites: SgfI-MluI

Cloning Scheme:



* The last codon before the Stop codon of the ORF

ACCN: NM_019860

ORF Size: 1296 bp

OTI Disclaimer: The molecular sequence of this clone aligns with the gene accession number as a point of reference only. However, individual transcript sequences of the same gene can differ through naturally occurring variations (e.g. polymorphisms), each with its own valid existence. This clone is substantially in agreement with the reference, but a complete review of all prevailing variants is recommended prior to use. [More info](#)

OTI Annotation: This clone was engineered to express the complete ORF with an expression tag. Expression varies depending on the nature of the gene.

Components: The ORF clone is ion-exchange column purified and shipped in a 2D barcoded Matrix tube containing 10ug of transfection-ready, dried plasmid DNA (reconstitute with 100 ul of water).

Reconstitution Method:

1. Centrifuge at 5,000xg for 5min.
2. Carefully open the tube and add 100ul of sterile water to dissolve the DNA.
3. Close the tube and incubate for 10 minutes at room temperature.
4. Briefly vortex the tube and then do a quick spin (less than 5000xg) to concentrate the liquid at the bottom.
5. Store the suspended plasmid at -20°C. The DNA is stable for at least one year from date of shipping when stored at -20°C.

RefSeq: [NM_019860.4](#)

RefSeq Size: 3285 bp

RefSeq ORF: 1299 bp

Locus ID: 3363

UniProt ID: [P34969](#)

Cytogenetics: 10q23.31

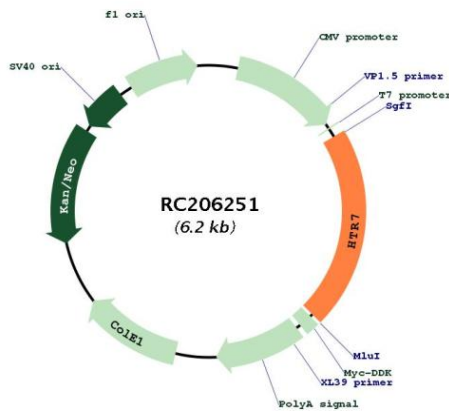
Protein Families: Druggable Genome, GPCR, Transmembrane

Protein Pathways: Calcium signaling pathway, Neuroactive ligand-receptor interaction

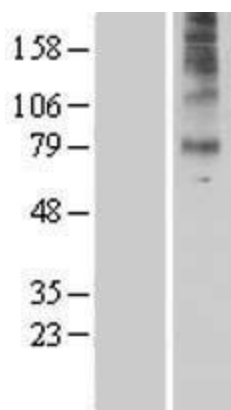
MW: 49.5 kDa

Gene Summary: The neurotransmitter, serotonin, is thought to play a role in various cognitive and behavioral functions. The serotonin receptor encoded by this gene belongs to the superfamily of G protein-coupled receptors and the gene is a candidate locus for involvement in autistic disorder and other neuropsychiatric disorders. Three splice variants have been identified which encode proteins that differ in the length of their carboxy terminal ends. [provided by RefSeq, Jul 2008]

Product images:



Circular map for RC206251



Western validation with an anti-DDK antibody * L: Control HEK293 lysate R: Over-expression lysate