

## Product datasheet for **RC206246**

### C1orf115 (NM\_024709) Human Tagged ORF Clone

#### Product data:

Product Type:	Expression Plasmids
Product Name:	C1orf115 (NM_024709) Human Tagged ORF Clone
Tag:	Myc-DDK
Symbol:	C1orf115
Synonyms:	RDD1
Mammalian Cell Selection:	Neomycin
Vector:	pCMV6-Entry (PS100001)
E. coli Selection:	Kanamycin (25 ug/mL)
ORF Nucleotide Sequence:	>RC206246 ORF sequence Red=Cloning site Blue=ORF Green=Tags(s)

TTTTGTAATACGACTCACTATAGGGCGGCCGGAATTCGTCGACTGGATCCGGTACCGAGGAGATCTGCC  
GCC**CGATCGCC**

ATGACGGTGGGAGCCAGGCTCCGAAGCAAGGCGGAGAGCAGCCTCCTGCGCCGGGGCCCCGAGGGCGAG  
GGCGAACCAGGGGGACGAGGAGCGGCCCATCCTGGAGCACCTGGAGTACGCGGACGAGGCGGAGGC  
GGCGGCCGAGAGCGGGACGAGCGCGGGACGAGCGGGGCCCGGGGACCCGGGGCGCGGAGGGTGCAC  
TTCGCCCTCCTGCCGAGCGCTACGAGCCACTGGAGGAGCCGGCCGAGCGAGCAGCCAGGAAGAGGT  
ACCGGAGGAAGCTGAAGAAGTACGGCAAGAATGTCGGGAAGTCAATCAAAGGATGCCGCTACGTGGT  
CATCGGCCTGCAAGGCTTCGCTGCAGCCTACTCCGCCCGTTTGGGTAGCCACCAGCGTGTATCCTTC  
GTGCGC

**ACGCGT**ACGCGGCCGCTCGAGCAGAACTCATCTCAGAAGAGGATCTGGCAGCAAATGATATCCTGGATT  
ACAAGGATGACGACGATAAGGTTTAA

Protein Sequence:	>RC206246 protein sequence Red=Cloning site Green=Tags(s)
-------------------	--

MTVGARLRSKAESSLLRRGPRGRGRTEGDDEEAAAILEHLEYADEAEAAAESGTSAADERGPTRGARRVH  
FALLPERYEPLEEPAPSEQPRKRYRRLKKGKNGVKVVIKGCYVVIQLQGFAAAYSAPFVATSVVSVF  
VR

**TR**TRPLEQKLISEEDLAANDILDYKDDDDKV

Chromatograms:	<a href="https://cdn.origene.com/chromatograms/mk6031_g11.zip">https://cdn.origene.com/chromatograms/mk6031_g11.zip</a>
----------------	---



[View online »](#)

Restriction Sites: SgfI-MluI

Cloning Scheme:



ACCN: NM\_024709

ORF Size: 426 bp

OTI Disclaimer: The molecular sequence of this clone aligns with the gene accession number as a point of reference only. However, individual transcript sequences of the same gene can differ through naturally occurring variations (e.g. polymorphisms), each with its own valid existence. This clone is substantially in agreement with the reference, but a complete review of all prevailing variants is recommended prior to use. [More info](#)

OTI Annotation: This clone was engineered to express the complete ORF with an expression tag. Expression varies depending on the nature of the gene.

Components: The ORF clone is ion-exchange column purified and shipped in a 2D barcoded Matrix tube containing 10ug of transfection-ready, dried plasmid DNA (reconstitute with 100 ul of water).

Reconstitution Method:

1. Centrifuge at 5,000xg for 5min.
2. Carefully open the tube and add 100ul of sterile water to dissolve the DNA.
3. Close the tube and incubate for 10 minutes at room temperature.
4. Briefly vortex the tube and then do a quick spin (less than 5000xg) to concentrate the liquid at the bottom.
5. Store the suspended plasmid at -20°C. The DNA is stable for at least one year from date of shipping when stored at -20°C.

RefSeq: [NM\\_024709.5](#)

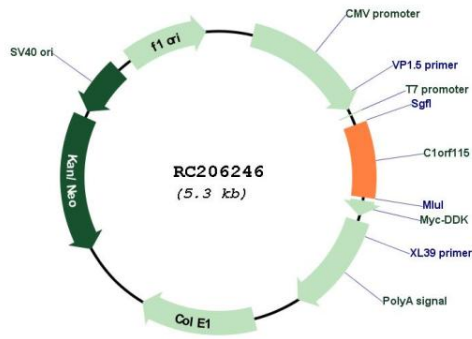
RefSeq Size: 2990 bp

RefSeq ORF: 429 bp

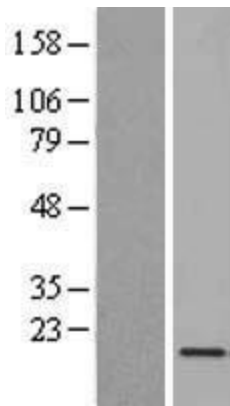
Locus ID: 79762

UniProt ID: [Q9H7X2](#)  
 Cytogenetics: 1q41  
 Protein Families: Transmembrane  
 MW: 15.5 kDa

**Product images:**



Circular map for RC206246



Western blot validation of overexpression lysate (Cat# [LY403015]) using anti-DDK antibody (Cat# [TA50011-100]). Left: Cell lysates from untransfected HEK293T cells; Right: Cell lysates from HEK293T cells transfected with RC206246 using transfection reagent MegaTran 2.0 (Cat# [TT210002]).