

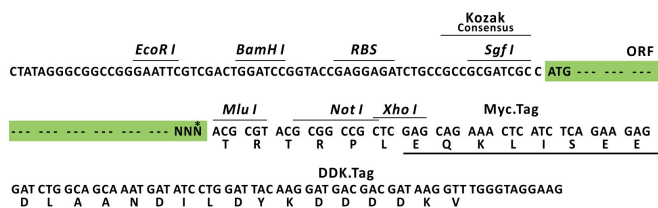
## Product datasheet for RC206242L3

### RAB33B (NM\_031296) Human Tagged Lenti ORF Clone

#### Product data:

Product Type:	Expression Plasmids
Product Name:	RAB33B (NM_031296) Human Tagged Lenti ORF Clone
Tag:	Myc-DDK
Symbol:	RAB33B
Synonyms:	SMC2
Mammalian Cell Selection:	Puromycin
Vector:	pLenti-C-Myc-DDK-P2A-Puro (PS100092)
E. coli Selection:	Chloramphenicol (34 ug/mL)
ORF Nucleotide Sequence:	The ORF insert of this clone is exactly the same as(RC206242).
Restriction Sites:	SgfI-MluI
Cloning Scheme:	

Cloning sites used for ORF Shuttling:



\* The last codon before the Stop codon of the ORF.

ACCN:	NM_031296
ORF Size:	687 bp



[View online »](#)

**OTI Disclaimer:** Due to the inherent nature of this plasmid, standard methods to replicate additional amounts of DNA in E. coli are highly likely to result in mutations and/or rearrangements. Therefore, OriGene does not guarantee the capability to replicate this plasmid DNA. Additional amounts of DNA can be purchased from OriGene with batch-specific, full-sequence verification at a reduced cost. Please contact our customer care team at [custsupport@origene.com](mailto:custsupport@origene.com) or by calling 301.340.3188 option 3 for pricing and delivery.

The molecular sequence of this clone aligns with the gene accession number as a point of reference only. However, individual transcript sequences of the same gene can differ through naturally occurring variations (e.g. polymorphisms), each with its own valid existence. This clone is substantially in agreement with the reference, but a complete review of all prevailing variants is recommended prior to use. [More info](#)

**OTI Annotation:** This clone was engineered to express the complete ORF with an expression tag. Expression varies depending on the nature of the gene.

**Components:** The ORF clone is ion-exchange column purified and shipped in a 2D barcoded Matrix tube containing 10ug of transfection-ready, dried plasmid DNA (reconstitute with 100 ul of water).

**Reconstitution Method:**

1. Centrifuge at 5,000xg for 5min.
2. Carefully open the tube and add 100ul of sterile water to dissolve the DNA.
3. Close the tube and incubate for 10 minutes at room temperature.
4. Briefly vortex the tube and then do a quick spin (less than 5000xg) to concentrate the liquid at the bottom.
5. Store the suspended plasmid at -20°C. The DNA is stable for at least one year from date of shipping when stored at -20°C.

**RefSeq:** [NM\\_031296.1](#)

**RefSeq Size:** 3876 bp

**RefSeq ORF:** 690 bp

**Locus ID:** 83452

**UniProt ID:** [Q9H082](#)

**Cytogenetics:** 4q31.1

**Domains:** ras, RAN, RAS, RHO, RAB

**Protein Families:** Druggable Genome

**MW:** 25.5 kDa

**Gene Summary:**

This gene encodes a small GTP-binding protein of the Rab GTPase family, whose members function in vesicle transport during protein secretion and endocytosis. Rab GTPases are active, membrane-associated proteins that recruit effector proteins in the GTP-bound state and inactive cytosolic proteins when in a GDP-bound state. The protein encoded by this gene is ubiquitously expressed and has been implicated in Golgi to endoplasmic reticulum cycling of Golgi enzymes. In addition, this protein regulates Golgi homeostasis and coordinates intra-Golgi retrograde trafficking. Allelic variants in this gene have been associated with Dyggve-Melchior-Clausen syndrome and Smith-McCort dysplasia 2, which are autosomal recessive spondyloepimetaphyseal dysplasias characterized by skeletal abnormalities. [provided by RefSeq, Sep 2016]