

Product datasheet for **RC206238**

PCDHA6 (NM_018909) Human Tagged ORF Clone

Product data:

Product Type:	Expression Plasmids
Product Name:	PCDHA6 (NM_018909) Human Tagged ORF Clone
Tag:	Myc-DDK
Symbol:	PCDHA6
Synonyms:	CNR2; CNRN2; CNRS2; CRNR2; PCDH-ALPHA6
Mammalian Cell Selection:	Neomycin
Vector:	pCMV6-Entry (PS100001)
E. coli Selection:	Kanamycin (25 ug/mL)



[View online »](#)

ORF Nucleotide
Sequence:

>RC206238 ORF sequence
Red=Cloning site Blue=ORF Green=Tags(s)

TTTTGTAATACGACTCACTATAGGGCGGCCGGGAATTCGTCGACTGGATCCGGTACCGAGGAGATCTGCC
GCC**CGGATCGCC**

ATGGTGTTTACCCCGGAGGATAGATTGGGAAAGCAATGTCTGCTCCTCCCCTTCTGCTCCTCGCAGCCT
GGAAGGTGGGGAGCGGCCAGCTCCACTACTCCGTACCCGAGGAGGCCAAACACGGCACCTTCGTGGGCCG
GATCGCGCAGGACCTGGGGCTGGAGCTGGCGGAGCTGGTGCCGCGCTGTTTCAGGATGGCCTCCAAAGAC
CGCGAGGACCTTCTGGAGGTAATCTGCAGAATGGCATTGTTGTTGTGAATTCTCGGATCGACCGCAGG
AGCTGTGCGGGCGGAGCGCGGAGTGCAGCATCCACTGGAGGTGATCGTGGACAGGCCGCTGCAGGTTTT
CCATGTGGACGTGGAGGTGAGGGACATTAACGACAACCCGCCCTTGTCCCGGTAGAGGAACAAAGAGTG
CTGATTTACGAATCTAGGCTGCCAGATTCTGTGTTTCCACTGGAGGGCGCGTCCGATGCAGATGTTGGCT
CAAATTCATCTTAACCTATAAACTCAGTTCTAGCGAATACTTCGGGCTAGATGTAAAAATAACAGTGA
TGACAATAAACAAATTGGGCTCTTATTAAGAAATCCTTGACAGAGAGGAAGCTCCTGCACACAATTA
TTCTGACAGCCACAGATGGGGGCAAACCTGAGCTCACAGGCAGTGTTCAGCTGCTGGTACAGTGTGG
ATGTGAATGATAATGCTCCCACTTTTCGAACAGTCTGAATACGAAGTAAGAATATTCGAAAATGCAGACAA
CGGAACAACAGTTATCAGACTGAATGCTTCTGATCGGGATGAAGGAGCGAATGGGGCAATTTTCATATTCT
TTTAATAGCCTTGTTCAGCCATGGTTATTGACCACCTTAGCATAGATCGAAATACGGGAGAAAATAGTGA
TTCGGGGTAATTTGGATTTTGAACAAGAAAACCTATACAAAATCCTCATTGACGCCACGGACAAAGGCCA
TCCTCCCATGGCGGGTCAATGCACCGTTTTAGTGAGAAATTTGGATAAAAATGATAACGTCCTGAGATA
GCACTGACTTCCTTATCCTTGCCTGTACGTGAAGACGCTCAATTTGGTACTGTCATCGCCCTAATTAGCG
TGAACGACCTCGATTGAGTGCACGCGGACAGTGAACGCTCGCTGACGCGCTCAGTCCCTTTCAAGCT
GGTGTCCACCTTCAAGAATTACTACTCGTTGGTGTGGACAGTGCCTGGACCGGAGAGCGTGTCCGGCC
TATGAGTTGGTGGTACCGCGCGGGACGGGGCTCGCCTTCGCTGTGGGCCACAGCCAGCTTGTCTGTGG
AGGTGGCCGACATGAATGACAATGCTCCGGCGTTCGCGCAGCCGAGTACACAGTGTTCGTGAAGGAGAA
CAACCCGCGGGCTGCCACATCTTACGGTGTCTGCGCAGACGCGGACGCGCAGGAGAACGCGCTGGTG
TCCTACTCGTGGTGGAGCGCGGGTGGCGAGCGCGCTTGTGAGCTACATTTCCGGTGCACGCGGAGA
GCGGCAAGGTGTACGCGCTGCAGCCGCTGGACCAGGAGGAGTACAGCTGCTGCAGTTTCAGGTGAGCGC
GCGCGACGCGGGCTGCCGCTCTGGGAGCAACGTGACGCTGCAGGTGTTCTGCTGGACGAGAACGAC
AACGCGCCGGCGCTGCTGGCGCTCGGGTGGTGGTACTGGTGGTGCAGTGCAGGAGCTGGTCCCGGCT
CACTGGGTGCAGGCCAAGTGGTGGCGAAGGTGCGCGCAGTTGACGCCACTCAGGCTACAACGCGTGGCT
TTCGTATGAGCTGCAGCCCCGCAAGCAGCGCTCGCTTCCCCTTTCGCGTGGGGCTGTACACGGGCGAG
ATCAGCACCACTCGTGTCTGGACGAAGCGGACTCTCCGCGCCACCGGCTGCTGGTGTGGTGAAGGACC
ACGGTGAGCCGGCGCTGACAGCGACGGCCACGGTTCTGGTGTGCTGGTGGAGAGTGGCCAGGCTCCAAA
GGCGTCATCACGGGCGTGGTGGGCGCCGCGGGCCAGAGGCGGCGCTGGTGGATGTCAACGTGTACCTG
ATCATCGCCATCTGCGCGGTATCCAGCTGTGGTCTCACGCTACTGCTGTACACAGCGCTGCGGTGCT
CGGCGCCACCCACCGAGGGCGCGTGCACGGCGGACAAGCCACGCTGGTGTGCTCCAGCGCAGTGGGGAG
CTGGTCTACTCGCAGCAGAGGGCGGAGAGGGTGTGCTCCGGGAGGGCCACCCCAAGATGGATCTCATG
GCCTTTAGCCCCAGCCTTTCACCTTGTCTATTATGATGGGTAAGGCGGAGAATCAGATTTAAATGAAG
ATCATGATGCCAAACCAGCAGACCCCAACCCTGACTGGCGTACTCTGCCTCCCTGAGAGCAGGCATGCA
CAGCTCTGTGCACCTAGAGGAGGCTGGCATTCTACGGGCTGGTCCAGGAGGGCCTGATCAGCAGTGGCCA
ACAGTATCCAGTGAACACCAGAACAGAGGAGGAGAGTGTCCCTCCAGTCCGGTGGGGTGTCAACA
GCAACAGCTGGACCTTTAAATACGACCAGGCAACCCCAACAATCCGGTCCCGGTGAGTTGCCCGACAA
ATTCATTATCCAGGATCTCCTGCAATCATCTCCATCCGGCAGGAGCCTACTAACAGCCAAATTGACAAA
AGTGACTTCATAACCTTCGGCAAAAAGGAGGAGACCAAGAAAAAGAAGAAAAAGAAGGGTAACAAGA
CCCAGGAGAAAAAGAGAAAGGGAACAGCAGACTGACAACAGTGACCAG

AG**CGGACCG**ACGCGTACGCGGCCGCTCGAGCAGAACTCATCTCAGAAGAGGATCTGGCAGCAAATGATATCC
TGGATTACAAGGATGACGACGATAAGGTTTAA

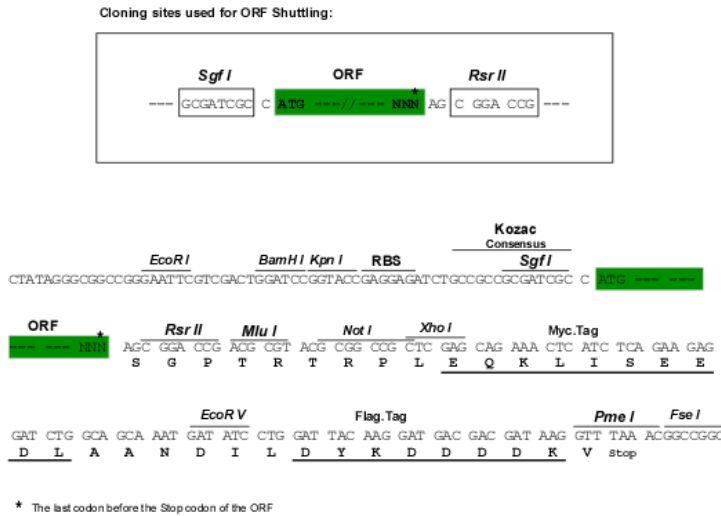
Protein Sequence: >RC206238 protein sequence
 Red=Cloning site Green=Tags(s)

MVFTPEDRLGKQCLLLPLLLLAAWKVGSGQLHYSVPPEAKHGTFVGRIAQDLGLELAELVPRLFRMASKD
 REDLLEVNLRQNGILFVNSRIDREELCGRSAECSIHLEIVDRPLQVFHVDVEVRDINDNPPLFPVEEQRV
 LIYESRPLPDSVFPLEGASDADVGSNSILTYKLSSEYFGLDVKINSDDNKQIGLLKKSLDREEAPAHNL
 FLTATDGGKPELGTGTQQLLVTVLDVNDNAPTFEQSEYEVRI FENADNGTTVIRLNASDRDEGANGAISYS
 FNSLVAAMVIDHFSIDRNTGEIVIRGNLDFEQENLYKILIDATDKGHPPMAGHCTVLRILDKNDNVPEI
 ALTSLSLPVREDAQFGTVIALISVNDLDSGANGQVNCSLTPHVPFKLVSTFKNYYSLVLDALDRESVSA
 YELVVTARDGGSPSLWATASLSVEVADMNDNAPAFAPQEYTVFVKENPPGCHIFTVSARDADAQENALV
 SYSLVERRVGERALSSYISVHAESGKYYALQPLDHEEELQLFQVSARDAGVPPPLGSNVTLQVFLDEND
 NAPALLAPRVGGTGGAVSELVPRSLGAGQVAVKRAVDADSGYNLWVSYELQPPASSARFPFRVGLTYGE
 ISTTRVLDEADSPRHLLVLRKDHGEPAL TATATVLSLVESGQAPKASSRASVGAAGPEALVDVNVYL
 IIAICAVSLLVLTLLLYTALRCSAPTEGACTADKPTLVCSAVGSWSYSQRRQRVCSEGGPKMDLM
 AFSPSLSPCPIMMGKAENQDLNEDHDAKPRQPNPDWRYSASLRAGMHSSVHLEEAGILRAGPGGPDQQWP
 TVSSATPEPEAGEVSPPVGAGVNSNSWTFKYGPNPKQSGPGELPKFIIIPGSPAIIISIRQEPNTSQIDK
 SDFITFGKKEETKKKKKKKGNKTQEKKKEGNSTTDNSDQ

SGP TRTRPLEQKLI SEEDLAANDILDYKDDDDKV

Restriction Sites: SgfI-RsrII

Cloning Scheme:

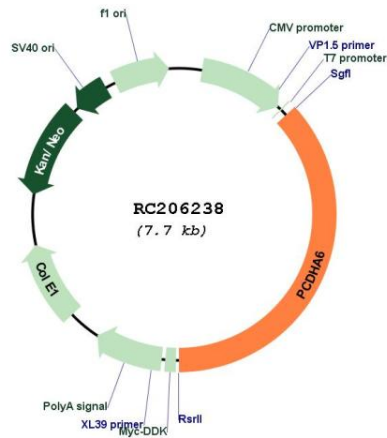


ACCN: NM_018909

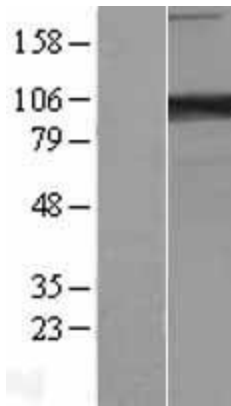
ORF Size: 2850 bp

OTI Disclaimer:	The molecular sequence of this clone aligns with the gene accession number as a point of reference only. However, individual transcript sequences of the same gene can differ through naturally occurring variations (e.g. polymorphisms), each with its own valid existence. This clone is substantially in agreement with the reference, but a complete review of all prevailing variants is recommended prior to use. More info
OTI Annotation:	This clone was engineered to express the complete ORF with an expression tag. Expression varies depending on the nature of the gene.
Components:	The ORF clone is ion-exchange column purified and shipped in a 2D barcoded Matrix tube containing 10ug of transfection-ready, dried plasmid DNA (reconstitute with 100 ul of water).
Reconstitution Method:	<ol style="list-style-type: none">1. Centrifuge at 5,000xg for 5min.2. Carefully open the tube and add 100ul of sterile water to dissolve the DNA.3. Close the tube and incubate for 10 minutes at room temperature.4. Briefly vortex the tube and then do a quick spin (less than 5000xg) to concentrate the liquid at the bottom.5. Store the suspended plasmid at -20°C. The DNA is stable for at least one year from date of shipping when stored at -20°C.
RefSeq:	NM_018909.4
RefSeq Size:	5430 bp
RefSeq ORF:	2853 bp
Locus ID:	56142
UniProt ID:	Q9UN73
Cytogenetics:	5q31.3
Domains:	CA
Protein Families:	Secreted Protein, Transmembrane
MW:	102.7 kDa
Gene Summary:	This gene is a member of the protocadherin alpha gene cluster, one of three related gene clusters tandemly linked on chromosome five that demonstrate an unusual genomic organization similar to that of B-cell and T-cell receptor gene clusters. The alpha gene cluster is composed of 15 cadherin superfamily genes related to the mouse CNR genes and consists of 13 highly similar and 2 more distantly related coding sequences. The tandem array of 15 N-terminal exons, or variable exons, are followed by downstream C-terminal exons, or constant exons, which are shared by all genes in the cluster. The large, uninterrupted N-terminal exons each encode six cadherin ectodomains while the C-terminal exons encode the cytoplasmic domain. These neural cadherin-like cell adhesion proteins are integral plasma membrane proteins that most likely play a critical role in the establishment and function of specific cell-cell connections in the brain. Alternative splicing has been observed and additional variants have been suggested but their full-length nature has yet to be determined. [provided by RefSeq, Jul 2008]

Product images:



Circular map for RC206238



Western blot validation of overexpression lysate (Cat# [LY412921]) using anti-DDK antibody (Cat# [TA50011-100]). Left: Cell lysates from untransfected HEK293T cells; Right: Cell lysates from HEK293T cells transfected with RC206238 using transfection reagent MegaTran 2.0 (Cat# [TT210002]).