

Product datasheet for **RC206236**

TEX12 (NM_031275) Human Tagged ORF Clone

Product data:

Product Type: Expression Plasmids
Product Name: TEX12 (NM_031275) Human Tagged ORF Clone
Tag: Myc-DDK
Symbol: TEX12
Mammalian Cell Selection: Neomycin
Vector: pCMV6-Entry (PS100001)
E. coli Selection: Kanamycin (25 ug/mL)
ORF Nucleotide Sequence: >RC206236 ORF sequence
Red=Cloning site Blue=ORF Green=Tags(s)

TTTTGTAATACGACTCACTATAGGGCGGCCGGAATTCGTCGACTGGATCCGGTACCGAGGAGATCTGCC
GCC**CGATCGCC**

ATGATGGCAAATCACCTTGTAAGCCTGATAATAGGAATTGCAAGAGGCCAAGAGAATTGGAGTCTCCAG
TGCCAGATAGTCCACAGCTGTCTCTCTTGAAAAATCAGATTCATCTTTCTCTGAAATTTCCGGACTATT
TTATAAAGATGAAGCCTTGAGAAAGATTTAAATGATGTGAGCAAGGAAATTAATCTAATGTTGTCTACC
TATGCAAAGCTTTTAAGTGAGAGAGCAGCAGTAGATGCATCTTACATTGATGAGATAGATGAACCTTCA
AAGAAGCCAATGCTATTGAAAACCTTTCTAATACAAAAAGAGAGTTCCTGCGACAGAGGTTACAGTGAT
TGCAAACACATTACACAGA

ACGCGTACGCGGCCGCTCGAGCAGAACTCATCTCAGAAGAGGATCTGGCAGCAAATGATATCCTGGATT
ACAAGGATGACGACGATAAGGTTTAA

Protein Sequence: >RC206236 protein sequence
Red=Cloning site Green=Tags(s)

MMANHLVKPDNRNCKRPRELESPVDPSPQLSSLGKSDSSFSEISGLFYKDEALEKDLNDVSKEINLMLST
YAKLLSERAADVASYIDEIDELFKEANAIEENFLIQKREFLRQRFVIANLHR

TRTRPLEQKLISEEDLAANDILDYKDDDDKV

Chromatograms: https://cdn.origene.com/chromatograms/mk6720_e09.zip

Restriction Sites: Sgfl-MluI



[View online »](#)

Cloning Scheme:


ACCN: NM_031275

ORF Size: 369 bp

OTI Disclaimer: The molecular sequence of this clone aligns with the gene accession number as a point of reference only. However, individual transcript sequences of the same gene can differ through naturally occurring variations (e.g. polymorphisms), each with its own valid existence. This clone is substantially in agreement with the reference, but a complete review of all prevailing variants is recommended prior to use. [More info](#)

OTI Annotation: This clone was engineered to express the complete ORF with an expression tag. Expression varies depending on the nature of the gene.

Components: The ORF clone is ion-exchange column purified and shipped in a 2D barcoded Matrix tube containing 10ug of transfection-ready, dried plasmid DNA (reconstitute with 100 ul of water).

- Reconstitution Method:**
1. Centrifuge at 5,000xg for 5min.
 2. Carefully open the tube and add 100ul of sterile water to dissolve the DNA.
 3. Close the tube and incubate for 10 minutes at room temperature.
 4. Briefly vortex the tube and then do a quick spin (less than 5000xg) to concentrate the liquid at the bottom.
 5. Store the suspended plasmid at -20°C. The DNA is stable for at least one year from date of shipping when stored at -20°C.

RefSeq: [NM_031275.3](#)

RefSeq Size: 1144 bp

RefSeq ORF: 372 bp

Locus ID: 56158

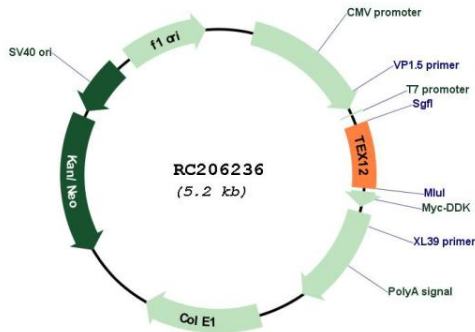
UniProt ID: [Q9BXU0](#)

Cytogenetics: 11q23.1

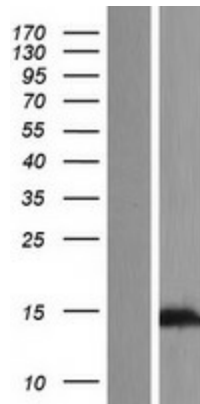
MW: 14.1 kDa

Gene Summary: This gene is similar to a mouse gene that is expressed in the testis. [provided by RefSeq, Jul 2008]

Product images:



Circular map for RC206236



Western blot validation of overexpression lysate (Cat# [LY410612]) using anti-DDK antibody (Cat# [TA50011-100]). Left: Cell lysates from untransfected HEK293T cells; Right: Cell lysates from HEK293T cells transfected with RC206236 using transfection reagent MegaTran 2.0 (Cat# [TT210002]).