

Product datasheet for **RC206233**

TEM7 (PLXDC1) (NM_020405) Human Tagged ORF Clone

Product data:

Product Type:	Expression Plasmids
Product Name:	TEM7 (PLXDC1) (NM_020405) Human Tagged ORF Clone
Tag:	Myc-DDK
Symbol:	TEM7
Synonyms:	TEM3; TEM7
Mammalian Cell Selection:	Neomycin
Vector:	pCMV6-Entry (PS100001)
E. coli Selection:	Kanamycin (25 ug/mL)



[View online »](#)

ORF Nucleotide Sequence:

>RC206233 ORF sequence
 Red=Cloning site Blue=ORF Green=Tags(s)

TTTTGTAATACGACTCACTATAGGGCGGCCGGAATTCGTCGACTGGATCCGGTACCGAGGAGATCTGCC
 GCC**CGGATCGCC**

ATGCGAGGCGAGCTCTGGCTCCTGGTGCTGGTGCTCAGGGAGGCTGCCCGGGCGCTGAGCCCCAGCCCC
 GAGCAGGTCACGATGAGGGCCAGGCTCTGGATGGGCTGCCAAAGGGACCGTGCGGGCTGGAACCGGAG
 AGCCCCGAGAGCCCTGGGCATGTGTACAGACCCGACAGGACCCAGCTGAGCCAGGACCTGGGTGGGGC
 ACCCTGGCCATGGACACGCTGCCAGATAACAGGACCAGGGTGGTGGAGGACAACCACAGCTATTATGTGT
 CCCGTCTCTATGGCCCCAGCGAGCCCCACAGCCGGAAGTGTGGGTAGATGTGGCCGAGGCCAACCGGAG
 CCAAGTGAAGATCCACACAATACTCTCCAACACCCACCGCAGGCTTCGAGAGTGGTCTTGTCTTTGAT
 TTCCTTTCTACGGGCATCCTCTCGGCAGATCACCATGGCAACTGGAGGCTTCATCTTCATGGGGACG
 TGATCCATCGGATGCTCACAGCTACTCAGTATGTGGCCCCCTGATGGCCAACTCAACCCTGGCTACTC
 CGACAACCTCCACAGTTGTTTACTTTGACAATGGGACAGTCTTTGTGGTTCAGTGGGACCAGTTTATCTC
 CAAGGCTGGGAAGACAAGGGCAGTTTCACCTCCAGGCAGCTCTGCACCATGACGGCCGATTGTCTTTG
 CCTATAAAGAGATCCCTATGTCTGTCCCGAAATCAGCTCCTCCCAGCATCCTGTCAAACCGGCATC
 GGATGCCTTATGATTCTCAATCCATCCCCGGATGTGCCAGAATCTCGGCGAAGGAGCATCTTTGAATAT
 CACCGCATAGAGCTGGACCCAGCAAGGTACCAGCATGTCCGGCCGTGGAGTTCACCCCATTTGCCGACCT
 GCCTGCAGCATAGGAGCTGTGACGCCTGCATGTCTCAGACCTGACCTTCAACTGCAGCTGGTGCCATGT
 CCTCCAGAGATGCTCCAGTGGCTTTGACCGCTATCGCCAGGAGTGGATGGACTATGGCTGTGCACAGGAG
 GCAGAGGGCAGGATGTGCGAGGACTTCCAGGATGAGGACCAGACTCAGCCTCCCTGACACTTCTTCA
 GCCCTATGATGGAGACCTCACCCTACCTCCTCCTCCTCCTCCTCCTCCTCCTCCTCCTCCTCCTCCTC
 CACCAAGTTGAATCCCTATGCAGGAGGAGACGGCCTTCAGAACAACCTGTACCCCAAGACAAGGGCACT
 CCTGTGCACCTGGCACCATCGTGGGCATCGTGTGCGAGTCTCCTCCTGCGGGCCATCATCCTGGCTG
 GAATTTACATCAATGGCCACCCACATCCAATGCTGCGCTCTTCTTCATCGAGCGTAGACCTCACCCTG
 GCCAGCCATGAAGTTTCGAGCCACCCTGACCATTCCACCTATGCGGAGGTGGAGCCCTCGGGCCATGAG
 AAGGAGGGCTTCATGGAGGCTGAGCAGTGC

ACGCGTACGCGGCCGCTCGAGCAGAACTCATCTCAGAAGAGGATCTGGCAGCAAATGATATCCTGGATT
 ACAAGGATGACGACGATAAGGTTTAA

Protein Sequence:

>RC206233 protein sequence
 Red=Cloning site Green=Tags(s)

MRGELWLLVLLVREAAALSPQPGAGHDEGPGSGWAAKGTVRGWNRRARESPGHVSEPDRTQLSQDLGGG
 TLAMDTLPNRRTRVVEDNHSYYVSRLYGPSEPHSRELWVDVAEANRSQVKIHTILSNTHRQASRVLSFD
 FPFYGHPLRQITMATGGFIFMGDVIHRMLTATQYVAPLMANFNPGYSDNSTVVYFDNGTVFVVQWDHVYL
 QGWEDKGSFTFQAALHHDGRIVFAYKEIPMSVPEISSSQHPVKTLGLSDFMILNPSDPVPESRRRSIFEY
 HRIELDPSKVTSMSAVEFTPLPTCLQHRSCDACMSSDLTFNCSWCHVLQRCSSGFDRYRQEWMDYGAQE
 AEGRMCEDFQDEHDHSASPDTFSFYDGLTTTSSSLFIDSLTTEDDTKLNYPYAGDGLQNNLSPKTKGT
 PVHLGTIVGIVLAVLLVAAIILAGIYINGHPTSNAALFFIERRPHHPAMKFRSHPDHSTYAEVEPSGHE
 KEGFMEAEQC

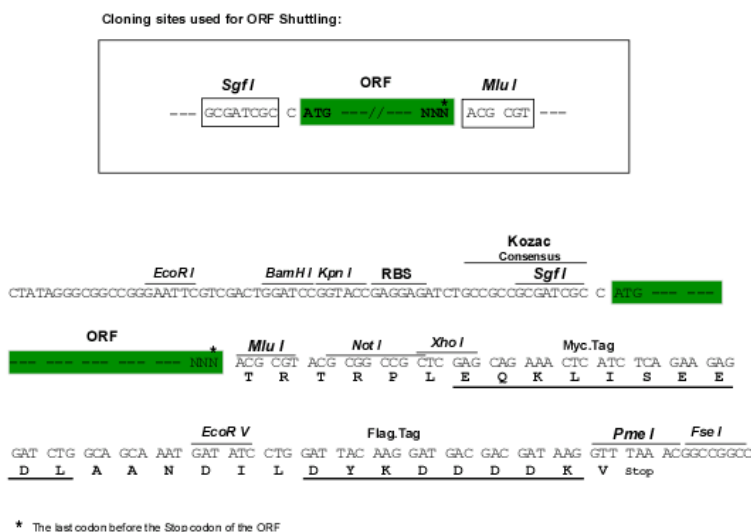
TRTRPLEQKLISEEDLAANDILDYKDDDDKV

Chromatograms:

https://cdn.origene.com/chromatograms/mk6041_a08.zip

Restriction Sites:

Sgfl-Mlul

Cloning Scheme:

ACCN: NM_020405

ORF Size: 1500 bp

OTI Disclaimer: The molecular sequence of this clone aligns with the gene accession number as a point of reference only. However, individual transcript sequences of the same gene can differ through naturally occurring variations (e.g. polymorphisms), each with its own valid existence. This clone is substantially in agreement with the reference, but a complete review of all prevailing variants is recommended prior to use. [More info](#)

OTI Annotation: This clone was engineered to express the complete ORF with an expression tag. Expression varies depending on the nature of the gene.

Components: The ORF clone is ion-exchange column purified and shipped in a 2D barcoded Matrix tube containing 10ug of transfection-ready, dried plasmid DNA (reconstitute with 100 ul of water).

Reconstitution Method:

1. Centrifuge at 5,000xg for 5min.
2. Carefully open the tube and add 100ul of sterile water to dissolve the DNA.
3. Close the tube and incubate for 10 minutes at room temperature.
4. Briefly vortex the tube and then do a quick spin (less than 5000xg) to concentrate the liquid at the bottom.
5. Store the suspended plasmid at -20°C. The DNA is stable for at least one year from date of shipping when stored at -20°C.

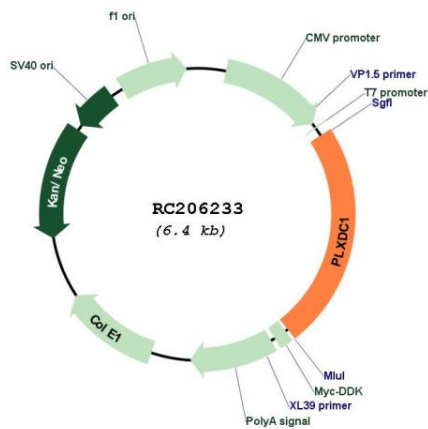
RefSeq: [NM_020405.5](#)
RefSeq Size: 6271 bp

RefSeq ORF: 1503 bp

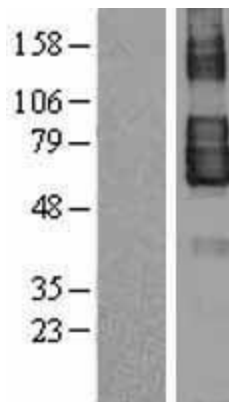
Locus ID: 57125

UniProt ID: [Q8IUUK5](#)
Cytogenetics: 17q12

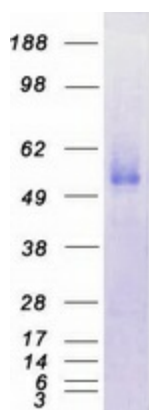
Domains: PSI
Protein Families: Druggable Genome, Secreted Protein, Transmembrane
MW: 55.8 kDa
Gene Summary: Plays a critical role in endothelial cell capillary morphogenesis.[UniProtKB/Swiss-Prot Function]

Product images:


Circular map for RC206233



Western blot validation of overexpression lysate (Cat# [LY402784]) using anti-DDK antibody (Cat# [TA50011-100]). Left: Cell lysates from untransfected HEK293T cells; Right: Cell lysates from HEK293T cells transfected with RC206233 using transfection reagent MegaTran 2.0 (Cat# [TT210002]).



Coomassie blue staining of purified PLXDC1 protein (Cat# [TP306233]). The protein was produced from HEK293T cells transfected with PLXDC1 cDNA clone (Cat# RC206233) using MegaTran 2.0 (Cat# [TT210002]).