

Product datasheet for **RC206228**

CXorf20 (BEND2) (NM_153346) Human Tagged ORF Clone

Product data:

Product Type:	Expression Plasmids
Product Name:	CXorf20 (BEND2) (NM_153346) Human Tagged ORF Clone
Tag:	Myc-DDK
Symbol:	CXorf20
Synonyms:	CXorf20
Mammalian Cell Selection:	Neomycin
Vector:	pCMV6-Entry (PS100001)
E. coli Selection:	Kanamycin (25 ug/mL)



[View online »](#)

**ORF Nucleotide
Sequence:**

>RC206228 ORF sequence
 Red=Cloning site Blue=ORF Green=Tags(s)

TTTTGTAATACGACTCACTATAGGGCGGCCGGAATTCGTCGACTGGATCCGGTACCGAGGAGATCTGCC
 GCC**CGCATCGCC**

ATGTCAGAGAGGACCCAGGAACAGGATTTTGTATTATAACTGTCGACGACAGTGATGATAACAATGATT
 GCAGATTGAGATGGTGAAGTTTCTGAAACAGCAGATAATTCCACTAATGACATAGCAGATGATCCAC
 TTATGTCACAGCAGATAATCCCCTGATGACACAGCCACACAACCAAATTTCCAGGCGGAATGATGGC
 CATCACCGTCCACTCCAATGTCATATGGGTCTGGCTCTGTCACCCAGGCTGGAGTGCAGTGGCATGATC
 ACAGCTCACTGCAGCCTCAACCTCTTGGACTCAAGCAATCTTCCACCTCAGCCTCCCAGTAGCTGGGA
 TGACAGGGCGCACGCCACCATGCCAGTAGCCATGGTGACCAAATAGTTTCACAGATAAACCACCCAGTA
 CATTAAAGAAGATACAGTTACAACCTCAGAGGAAGTGGATTTTCCAAAAGAGGAAGATTCTATACTCCAG
 AGGTACAGTCTAGCATATCACCACCAGCGAAAGGCAGGAAACCCATGCCTGGGCCAGCCCTGCTGTAAC
 ATCTCTTGAGTCAGCAGCATGTCATGAACTGCAGGAAGCAGACCTCAGTGAGAGTTTATCATATCCAGA
 ATTGTCTCCTCAAGTTCATTACAGCAGTATGTCGCACAAGGTGGCTCATTTCCTTGTTCGGTATGCCAT
 GGAACTTTATCAGTGGAGGTGCTGAAAGTACCAATGCTGTCTCATCTCATTGCGCAATGCTACTACAGCAGT
 ACCTATGGCAGTCTGTGACGAAGAGAATCCAGTCTGGCAAATAACCCCTGGTGTGGTGAATTACTCTGCT
 CTACCAGAAAATGAAAATGTGGGCCAGGTAGAGCCTTGTCTCTTCTGCTTCCATCCCAATTTGGAAA
 TGCCAGAAAAGACCAGCAAACAGCAGTAAAAACAGCACTGAGACAGCGAATTATCCAACTTAATGGGAAA
 TTACAATGGCCAAAATACTGCCTCTTTATCTGTCTTCAATCCCTCCCTATTTTGTGAGAAAATTACTT
 ACTGAAAATGCCAGGAACAACAGAAACCAACGTGGAAAATAACTCTCAGACAGTGTATTACCCAGCTTTAT
 CGGGAAAATACGAGTGCCCATATCCAGCCTCTTCATATCTTCCCACACTTCTAATTTTGAATCTGGCCC
 ACAAAATGAGTTATGGGACAATGAGTTACTCAACTGAAATGAAAATAACTGTGACCAAGATGATGCTTCA
 GCATCTGCCTGCCTCACTCCCGATTTTGCAGTGTACCTCTGAATATTTTGGTAAAAGTAGACACCAACA
 CGGAAAACAGCGTCAACACAATGAATCGCTCAACTTTATTGGACAGTGACAGTGGCCAGGATTCTTCTCTC
 ATCATCTGTCTGTATCCCTCCCAAGTATGGCTATCTTGGTATCCAAAAGAAAATGTCAGAGTACTTAAA
 ATCCATTTGCTGGCCGTACAAAATATGGCCAAACCTAAGCAAGCAGCCTGCTACTTGGTTCGTATTTTGT
 TCTCCAAGGAAATCCTGATTAGCAGCTCAGTGGATATCCATTTGAAAGACAGCCAATCCCTCGACCCGAA
 CAAAATGGCTGCATTGAGAGAATATCTGGCAACAACCTTTCCACCTGTGATTTGCATGAACATGGAAAA
 GACTGGCAGGACTGTATTTCTGGTATCAATTCTATGATCTACTGTTTATGTTCTGAAGGCAAGGACTCTC
 CAAAACTGTTCCGAAAAATAAAAAACGTACCAACCGTGTTCATCGGCATCTGCAGATAGAAAATGACCA
 AAGGGGCAGAGATGGTGGTGAAGGCTGTTCTTGGATGTTTCAGCCAATGAATAACTCCAAAATGAGAGTA
 AAGAGGAACTTGACGCAAAACAGTAATGCTATCCCTGAAGGAATGCGGAGAACCTTCCACTGATAATCCAG
 AGGAACCTGGTGAAGCATGGAGCTATTTTGAAGACCAATGGAGAAATATACGGATGCCATGTTTCAGTACT
 GACTTTGGCAAAAATAAGTCTTGCAGCAAGCCTGTGCGCTAGATACCTTATTCAGAAACTCTTACAAAA
 GATGTCCTGGTCCAAAGTAACGTCTATGGCAATCTGAAGCATGGCCTGTGTGCCCTTGACCCCAATAAGA
 TTAGTGCTCTCCGAGAGTCTCCAAGAAAACCTACCAATTTGTGATCTCTCGGAAAATGGAAGAGACTG
 GAAGTCGTGTGACCTCCATCAACAGCGGTATCCGTAGCCTTAGACATGACGTGAGAAGGGCTGAAGCC
 AGGTCTCAGTCGCTTCCAGCAGTGACCCCTCCAGAGCTGGAGCAGGAGTCAAAGCCAGGAGATCCCGACG
 CCACTGACCCAAGCACC

ACGCGTACGCGGCCGCTCGAGCAGAACTCATCTCAGAAGAGGATCTGGCAGCAAATGATATCCTGGATT
 ACAAGGATGACGACGATAAGGTTTAA

Protein Sequence: >RC206228 protein sequence
Red=Cloning site Green=Tags(s)

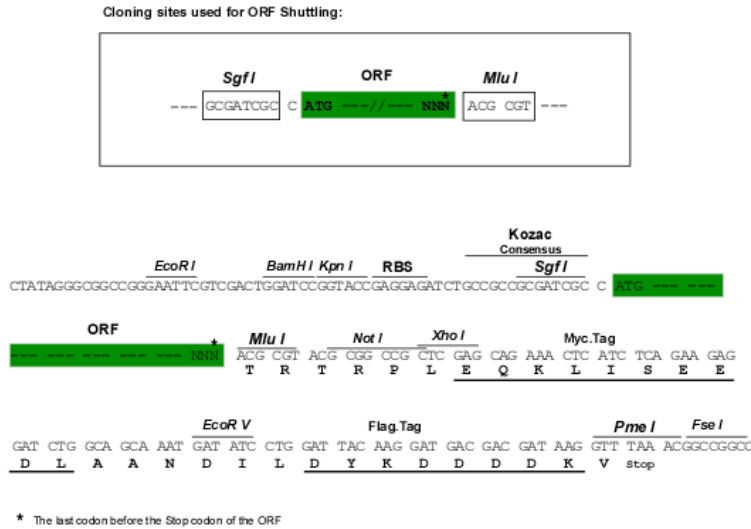
MSERTQEQDFVIIITVDDSDNDCSIEMVEVSETADNSTNDIADDSTYVTADNPTDDTATQPNFPGGNDG
HHRPLQMSYGGSVTQAGVQWHDHSSLQPQLGLKQFFHLSLPSSWDRRTPPCPVAHGDIQVSQINHPV
HLRRYSYNSEEVDLQKGRFYTPEVQSSISPPAERQETHAWASPAVTSLESAACHELQEADLSELSYPR
IVSSSSLQYVAQGGSFPCFGMPWNFISGGAESTNAVISFANATTAVPMAVLSRRESSLANPQVNVNYS
LPENENVGPRALSSFCFHPNLEMPERPANSSKNSTETANYPTLMGNYNGQNTASLSVFIIPPYFAEKIIL
TEMPGTTETNVENNSQTVYYPALSGNTSAPYPASSYLPITSNFESGPQMSYGTMSYSTEMKNNCQDDAS
ASACLTPDFALLPLNILVKVDTNTENSNTMNRSTLLDSDSGQDSSSSSVCIPPKYGYLGDPKRNVRVVK
IHLLAVQNMAKPKQAACYLVRILFSKEILISSVVDIHLKDSQSLDPNKMAALREYLATTFPTCDLHEHGK
DWQDCISGINSMIYCLCSEGKSTPKTVRKNKRTNRVASASADRNDQRGRDGGEGCSWMFQPMNNSKMRV
KRNLQPNSNAIPEGMREPSTDNPEEPGEAWSYFGRPWRNIRMPCSVLTLAKTKSCASLSARYLIQKLFK
DVLVQSNVYGNLKHGLCALDPNKISALREFLQENYPICDLSENGRDWKSCVTSINSGIRSLRHDVRRAEA
RSQSLPAVTPPELEQESKPGDPDATDPST

TRTRPLEQKLISEEDLAANDILDYKDDDDKV

Chromatograms: https://cdn.origene.com/chromatograms/mk6534_c04.zip

Restriction Sites: Sgfl-Mlul

Cloning Scheme:



ACCN: NM_153346

ORF Size: 2397 bp

OTI Disclaimer: The molecular sequence of this clone aligns with the gene accession number as a point of reference only. However, individual transcript sequences of the same gene can differ through naturally occurring variations (e.g. polymorphisms), each with its own valid existence. This clone is substantially in agreement with the reference, but a complete review of all prevailing variants is recommended prior to use. [More info](#)

OTI Annotation: This clone was engineered to express the complete ORF with an expression tag. Expression varies depending on the nature of the gene.

Components: The ORF clone is ion-exchange column purified and shipped in a 2D barcoded Matrix tube containing 10ug of transfection-ready, dried plasmid DNA (reconstitute with 100 ul of water).

- Reconstitution Method:**
1. Centrifuge at 5,000xg for 5min.
 2. Carefully open the tube and add 100ul of sterile water to dissolve the DNA.
 3. Close the tube and incubate for 10 minutes at room temperature.
 4. Briefly vortex the tube and then do a quick spin (less than 5000xg) to concentrate the liquid at the bottom.
 5. Store the suspended plasmid at -20°C. The DNA is stable for at least one year from date of shipping when stored at -20°C.

RefSeq: [NM_153346.3](#)

RefSeq Size: 4720 bp

RefSeq ORF: 2400 bp

Locus ID: 139105

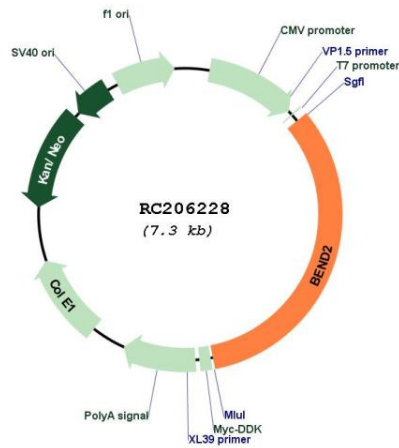
UniProt ID: [Q8NDZ0](#)

Cytogenetics: Xp22.13

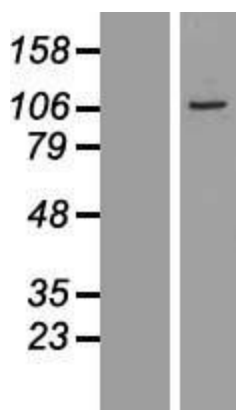
MW: 87.9 kDa

Gene Summary: This gene encodes a protein which has two BEN domains in the C-terminus. These domains are found in proteins which participate in protein and DNA interactions which occur during chromatin restructuring or transcription. Alternative splicing results in multiple transcript variants. [provided by RefSeq, Aug 2011]

Product images:



Circular map for RC206228



Western blot validation of overexpression lysate (Cat# [LY407063]) using anti-DDK antibody (Cat# [TA50011-100]). Left: Cell lysates from untransfected HEK293T cells; Right: Cell lysates from HEK293T cells transfected with RC206228 using transfection reagent MegaTran 2.0 (Cat# [TT210002]).