

Product datasheet for RC206225

C5orf35 (SETD9) (NM_153706) Human Tagged ORF Clone

Product data:

Product Type:	Expression Plasmids
Product Name:	C5orf35 (SETD9) (NM_153706) Human Tagged ORF Clone
Tag:	Myc-DDK
Symbol:	C5orf35
Synonyms:	C5orf35
Mammalian Cell Selection:	Neomycin
Vector:	pCMV6-Entry (PS100001)
E. coli Selection:	Kanamycin (25 ug/mL)
ORF Nucleotide Sequence:	>RC206225 ORF sequence Red=Cloning site Blue=ORF Green=Tags(s)

TTTTGTAATACGACTCACTATAGGGCGGCCGGAATTCGTCGACTGGATCCGGTACCGAGGAGATCTGCC
GCC**CGATCGCC**

ATGCCTGGCCGTCTGCTGCGGGCCTGTGGCAGCGATGGCGCCGTTACAAGTACCGCTTCGTTCCCTGGA
TCGCACTGAACCTAAGCCACAACCCGAGGACCCTCCGATATGTTCCAGAGGAATCCAAAGACAAAGTTAT
CTCAGATGAAGATGTCTAGGAACACTACTGAAAGTTTTCCAGGCTCTATTCTTAAATGATTTCAATAAA
CAATCAGAAATCTTGACTATGCTTCCAGAATCTGTTAAATCAAAATATCAAGACCTACTGGCAGTTGAAC
ATCAAGGGGTGAAACTGCGTGAAAACAGACATCAACAGCAAAGTACCTTTAAACCAGAAGAAATCTTTA
CAAGACTTTGGGTTTCAGTGTTGCCAAGCAACTAGCTCATTGATTTCTGCTGAAAAGGTGCTTCGTT
ACTAAAGGATTGGTACAAAAGGCGCAGTCGTATCTATGTATCCTGGTACAGTATATCAGAAGTATGAGC
CGATCTTTTTCCAGTCCATTGGAATCCGTTTATTTTTAGATGCCTGGATGGGGTACTCATTGATGGGAA
TGACAAAGGGATATCAAAAGTTGTGTACAGATCTTGAATGGGAGGGATCGACTCGGCCCTTTAAAAATG
AGTGATAGTACATGGCTAACGTCAGAAATTCATAACCCCTGGCTGTGGGACAGTATGTCAACAATTGTT
CCAATGACAGAGCAGCTAATGTCTGTTATCAGGAATTTGATGTGCCTGCAGTTTTCCCTATAGAAGTAA
GCAGTATCTTCCAAACATTGCCTACAGCTATGACAAAACAAAGCCCACTTCGATGTGTTGTTCTTGTGCGCA
CTTAGGGACATCAATCAAGGAGAAGAGCTTTTTTCAAACACTACTACACAATTGTCAGC

ACGCGTACGCGGCCGCTCGAGCAGAAACTCATCTCAGAAGAGGATCTGGCAGCAAATGATATCCTGGATT
ACAAGGATGACGACGATAAGGTTTAA



[View online »](#)

Protein Sequence: >RC206225 protein sequence
Red=Cloning site Green=Tags(s)

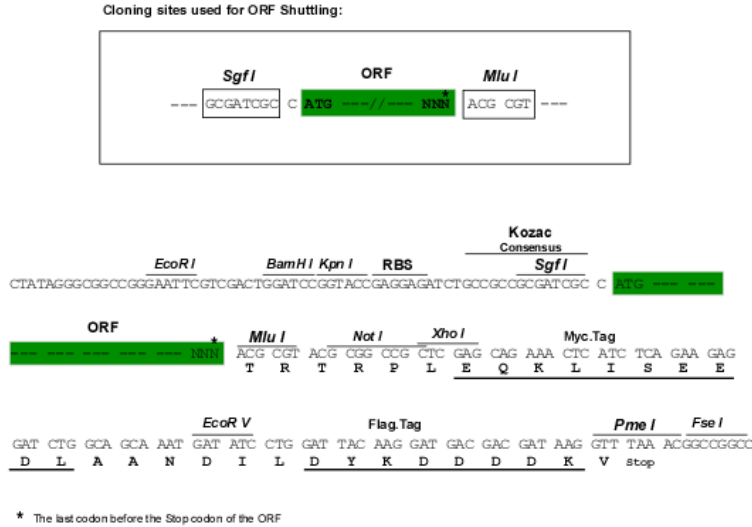
MPGRLLRGLWQRWRRYKYRFVPWIALNLSHPRTLRYVPPEESKDKVISDEDVLTLLKVFQALFLNDFNK
 QSEILTMLPESVKSKYQDLLAVEHQGVKLRNRHQQSTFKPEEILYKTLGF SVAQATSSLISAGKGVFV
 TKGLVPKGA VVSMYPGT VYQKYEP IFFQSIGNPFIFRCLDGLVLDGNDKGI SKVVYRSCNGRDRLGPLKM
 SDSTWL TSEIHNPLAVGQYVNNCSNDRAANVCYQEFDVP AVFP IELKQYLPNIAYSYDKQSPLRCVVLVA
 LRDINQGEELFSNYTTIVS

TRTRPLEQKLISEEDLAANDILDYKDDDDKV

Chromatograms: https://cdn.origene.com/chromatograms/mk6319_g09.zip

Restriction Sites: SgfI-MluI

Cloning Scheme:



ACCN: NM_153706

ORF Size: 897 bp

OTI Disclaimer: The molecular sequence of this clone aligns with the gene accession number as a point of reference only. However, individual transcript sequences of the same gene can differ through naturally occurring variations (e.g. polymorphisms), each with its own valid existence. This clone is substantially in agreement with the reference, but a complete review of all prevailing variants is recommended prior to use. [More info](#)

OTI Annotation: This clone was engineered to express the complete ORF with an expression tag. Expression varies depending on the nature of the gene.

Components: The ORF clone is ion-exchange column purified and shipped in a 2D barcoded Matrix tube containing 10ug of transfection-ready, dried plasmid DNA (reconstitute with 100 ul of water).

Reconstitution Method:

1. Centrifuge at 5,000xg for 5min.
2. Carefully open the tube and add 100ul of sterile water to dissolve the DNA.
3. Close the tube and incubate for 10 minutes at room temperature.
4. Briefly vortex the tube and then do a quick spin (less than 5000xg) to concentrate the liquid at the bottom.
5. Store the suspended plasmid at -20°C. The DNA is stable for at least one year from date of shipping when stored at -20°C.

RefSeq: [NM_153706.2](#), [NP_714917.1](#)

RefSeq Size: 1722 bp

RefSeq ORF: 900 bp

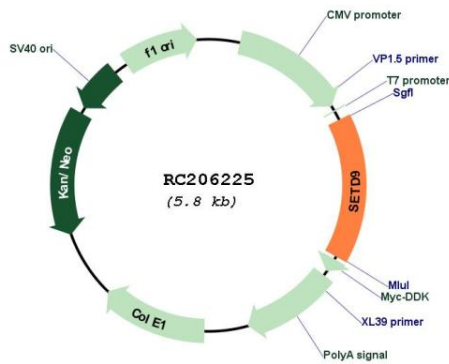
Locus ID: 133383

UniProt ID: [Q8NE22](#)

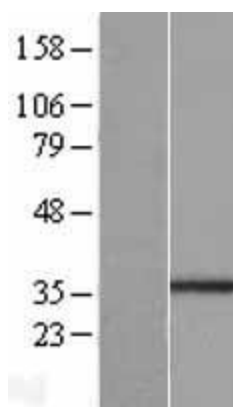
Cytogenetics: 5q11.2

MW: 34.2 kDa

Product images:



Circular map for RC206225



Western blot validation of overexpression lysate (Cat# [LY406973]) using anti-DDK antibody (Cat# [TA50011-100]). Left: Cell lysates from untransfected HEK293T cells; Right: Cell lysates from HEK293T cells transfected with RC206225 using transfection reagent MegaTran 2.0 (Cat# [TT210002]).



Coomassie blue staining of purified SETD9 protein (Cat# [TP306225]). The protein was produced from HEK293T cells transfected with SETD9 cDNA clone (Cat# RC206225) using MegaTran 2.0 (Cat# [TT210002]).