

Product datasheet for **RC206222**

C16orf71 (NM_139170) Human Tagged ORF Clone

Product data:

Product Type:	Expression Plasmids
Product Name:	C16orf71 (NM_139170) Human Tagged ORF Clone
Tag:	Myc-DDK
Symbol:	C16orf71
Mammalian Cell Selection:	Neomycin
Vector:	pCMV6-Entry (PS100001)
E. coli Selection:	Kanamycin (25 ug/mL)



[View online »](#)

ORF Nucleotide Sequence:

>RC206222 ORF sequence
 Red=Cloning site Blue=ORF Green=Tags(s)

TTTTGTAATACGACTCACTATAGGGCGGCCGGAATTCGTCGACTGGATCCGGTACCGAGGAGATCTGCC
 GCC**CGGATCGCC**

ATGGCATCCAACGATAAAGGCATGGCACCTCGCTGGGCTCTCCCTGGGCTCCCGATGGGGCCCTGGG
 ATGCCATCCTCAAGGCTGTCAAAGACCAGCTCCGCTCTCTGGACTCAGACTCCCCTTTGTCGGACTATGG
 GGAAGAGGAGCTGTTTCATCTCCAGCGAAACCAAACTCCCTGATTCCAGACCTGTCGGAGGAGCTGGCT
 GAAGATCTGCCGATGGCGACAAGTCCAGGGCCTGGGTGCTGCAGCTGAAGAGTCCCTCCCGAGCCAG
 TTCTGGTGCCTGCAGAATTGGCCACAGAACCTGGGTGCAGACAGAACACAAGGACAAAGGATGCATCCTC
 TCAGGAAGGAAGAGACCCTGGCAGGCCTTTTGAAGCTCTGGTGAAGTCAAGCTCTTCTGGGATGGCC
 GAGGAGCCCCCAGGTGGCTGGAAGGCGACCTTGAAGCCTGTCTTCAACACCAAAGGATCCCAGGGTC
 CTCCTGGGACCCACAGGCCGAAGCCACTCTCTCTGCCATGAAGGAGACCCAAAGGCAGAGCCCCTCAG
 CACTGCCTCACAAGAATCTGTGAACCGCCGGGCCCTCCGACAGGAGAGAAGGAAGATGATAGAGACGGAC
 ATCTCCAGAAAATCACCCGGGATGCCTGCGGCCCGACCAGCAGTGACAAAGGTGGGGTGAAGGAGGCGC
 CCTGCCACGCTGCGGAGTCAGCTCCCAGATCCAAAATGCCCTCTGGAGCCTCCGGAGGGACCACCACT
 GCTCTCGTCCAGCAACTGAAGCGTGGGATTTGGATGACATCCTTACAGTCTGGCGGGACAAGAAGAC
 AACCAGGGAAATCGTGCACCTGGAAGTGTGTGGTGGGAGCTGACCACCGCAAGTTCAAGACTGCATGG
 TGCCGAGCGCCACAACAGGCTCATGGAACAGCTGGCCCTCCTGTGCACCACGCAGTCCAAGGCCTCTGC
 TTGTGCCCGGAAGGTGCCTGCCGACCTCCCAGGACACCAAAGAGGCAGATTAGGAAGCAGATGTGCC
 TCAAGGAAGCGGGGCTCCAGGCTGGGCCAGGCCCGCAGCTGGCCAGGGCATGAGGCTTAACGCAGATT
 CCCCCACCATCTTTATTGACCTGCGGCAGATGGAGCTACCAGACCCTGTCCCCAGAAAGCTCCAGCCA
 CAGCTCCTCTGACAGTGAGGAGGAGGAGGAAGAGATGGCAGCTCTGGGAGACGCAGAGGGGGCATCT
 CCTTCTCCCTGGGGCTACGGACCTGTACCGGAAAAGCCAGCTTCTCCAGCAGCTCAGGCCTTTCAGA
 AGGGGACAGCCAGCCGAGCTGCCTGCCAGCAAGGGGCCCGGGTGGGAGGGCTCAGGCCCTTGAAGA
 CACAGCTGGATCACGAAGTGGGAGGAAGCAACACATGAAGCTCTGTGCAAGGGGAGAGCGCCAGGCT
 CGACTCCCAAGAGGCAGGCCAGAGCCCTGGGGATGTTCTGAGCCAGGGGCAGCCAGGGAGGCCCTGA
 TGCTCCTCTGGAGCACTA

ACGCGTACGCGGCCGCTCGAGCAGAAACTCATCTCAGAAGAGGATCTGGCAGCAAATGATATCCTGGATT
 ACAAGGATGACGACGATAAGGTTTAA

Protein Sequence:

>RC206222 protein sequence
 Red=Cloning site Green=Tags(s)

MASNDKGMAPSLGSPWASRMGPWDAILKAVKDQLPSLSDSPLSDYGEELFIFQRNQTSLIPDLSEELA
 EDPADGDKSRAWVAEEESLPEPVLVPAELATEPGCRQNRTRTKDASSQEGRDPGRPFESSGEVSALLGMA
 EEPWRLEGLGSLSFNTKGSQGPWPQAEATLSCHGEDPKAEPLSTASQESVNRRLRQERRKMIETD
 ILQKVTRDAGPPTSSDKGVKEAPCHAAESAPRSKMPLVEPPEGPPVLSLQQLAWDLDDILQSLAQED
 NQGNRAPGTVWWAADHRVQDCMVPSAHNRLMEQLALLCTTQSKASACARKVPADTPQDTKEADSGSRCA
 SRKRGSAQAGPQLAQGMRLNAESPTIFIDLRQMEPLDHLSPSSSHSSDSEEEEEEMAALGDAEGAS
 PSSLGLRCTGKSQLLQLRAFQKGTAPQLPASKGPAGGRAQALDRTAGSRTGRKQHMKLCAKQSAQA
 RLPRGRPRALGDVPEPGAAREALMPPLEQL

TRTRPLEQKLISEEDLAANDILDYKDDDDKV

Chromatograms:

https://cdn.origene.com/chromatograms/mk6534_b11.zip

Restriction Sites:

Sgfl-Mlul

Cloning Scheme:


ACCN: NM_139170

ORF Size: 1560 bp

OTI Disclaimer: The molecular sequence of this clone aligns with the gene accession number as a point of reference only. However, individual transcript sequences of the same gene can differ through naturally occurring variations (e.g. polymorphisms), each with its own valid existence. This clone is substantially in agreement with the reference, but a complete review of all prevailing variants is recommended prior to use. [More info](#)

OTI Annotation: This clone was engineered to express the complete ORF with an expression tag. Expression varies depending on the nature of the gene.

Components: The ORF clone is ion-exchange column purified and shipped in a 2D barcoded Matrix tube containing 10ug of transfection-ready, dried plasmid DNA (reconstitute with 100 ul of water).

- Reconstitution Method:**
1. Centrifuge at 5,000xg for 5min.
 2. Carefully open the tube and add 100ul of sterile water to dissolve the DNA.
 3. Close the tube and incubate for 10 minutes at room temperature.
 4. Briefly vortex the tube and then do a quick spin (less than 5000xg) to concentrate the liquid at the bottom.
 5. Store the suspended plasmid at -20°C. The DNA is stable for at least one year from date of shipping when stored at -20°C.

RefSeq: [NM_139170.3](#)

RefSeq Size: 2716 bp

RefSeq ORF: 1563 bp

Locus ID: 146562

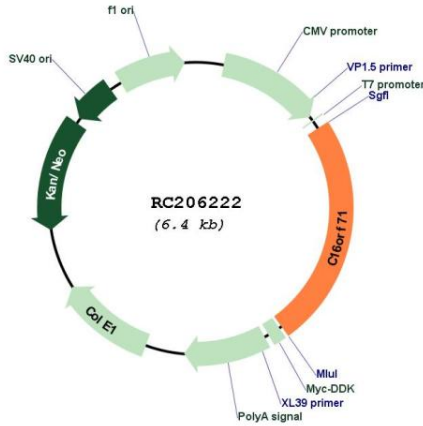
UniProt ID: [Q8IYS4](#)

Cytogenetics: 16p13.3

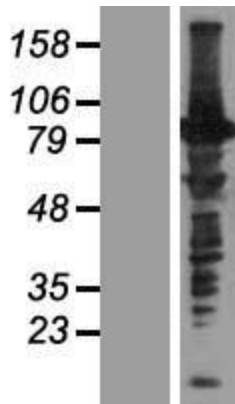
MW: 55.7 kDa

Gene Summary: In ciliated cells, dynein axonemal particle-specific protein required for deployment of ODA to the axoneme. Interacts with outer dynein arm (ODA) subunits.[UniProtKB/Swiss-Prot Function]

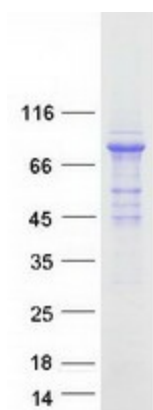
Product images:



Circular map for RC206222



Western blot validation of overexpression lysate (Cat# [LY408373]) using anti-DDK antibody (Cat# [TA50011-100]). Left: Cell lysates from untransfected HEK293T cells; Right: Cell lysates from HEK293T cells transfected with RC206222 using transfection reagent MegaTran 2.0 (Cat# [TT210002]).



Coomassie blue staining of purified C16orf71 protein (Cat# [TP306222]). The protein was produced from HEK293T cells transfected with C16orf71 cDNA clone (Cat# RC206222) using MegaTran 2.0 (Cat# [TT210002]).