

Product datasheet for **RC206212**

RNF190 (MARCH10) (NM_152598) Human Tagged ORF Clone

Product data:

Product Type:	Expression Plasmids
Product Name:	RNF190 (MARCH10) (NM_152598) Human Tagged ORF Clone
Tag:	Myc-DDK
Symbol:	RNF190
Synonyms:	MARCH-X; MARCH10; RNF190
Mammalian Cell Selection:	Neomycin
Vector:	pCMV6-Entry (PS100001)
E. coli Selection:	Kanamycin (25 ug/mL)



[View online »](#)

ORF Nucleotide
Sequence:

>RC206212 representing NM_152598.

Blue=ORF Red=Cloning site Green=Tag(s)

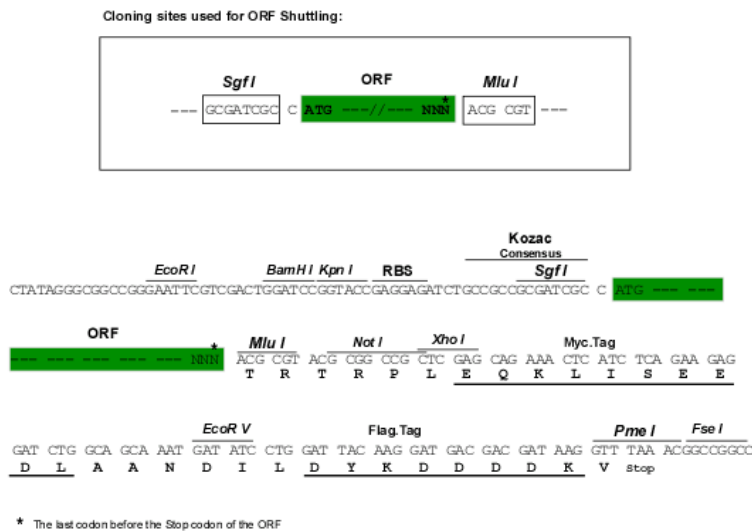
```
GCTCGTTTAGTGAACCGTCAGAATTTTGTAAACGACTCACTATAGGGCGGCCGGGAATTCGTGACTG
GATCCGGTACCGAGGAGATCTGCCGCCCGCATCGCC
ATGTTGCATGACGCAAGGGACAGGCAGAAGTTCTTCAGCGATGTTCAAGTATCTGCGGGACATGCAGCAT
AAGGTGGACTCTGAGTATCAGGCTTGTCTGAGACGACAGGAATATAGAAGAGACCCAAATGAGAAGAAA
CGCGATCAGTTTTGGGGCAAGAGACAAGTTTTGAGAGATCCCGTTTTCTAGCAGGTCACTTCCAAA
CAGAGTCTAGTGAGGAGGATGCTCTAACTGAACCAAGGTCATCTATCAAGATATCTGCATTTAAGTGT
GACTCCAAACTTCCAGCAATTGACCAAACATCAGTCAAGCAGAAACATAAAAAGTACCATGACTGTAAGG
AAAGCAGAGAAAAGTGGACCCAGCGAACCTCTCCAGCAGACCAAGCACCATGGTTTTATTAAGAAAG
AGGAAGCCAAACCTGAGGAGATTTACAGTCAGCCAGAATCGCACAGCCGAGAGCATCTGGGGACAGA
AGCAGACAGAAACAGCAGTGGCCTGCAAAGGTGCCGTTCCAGGGGAGCAGATCAAGTAGTTCAACAA
GAAGGCCCTGATGTAACTAAGCTGAAGAGGCCAAATCAAGAGAGAAGAACTTGGTCCCATCGTCA
CAGCCAATGACTGAGAACGCCCTGATAGAGCCAAAAAGGAGACCCGAGTGCTCCTTCCAGAGTGAG
CTGCATCCAGCCCTGTCCAGGCCCTCCAAGGAAAAAATAGTCCTCAAGTATTGAGTGAGTTCTCGGGG
CCACCACTCACACCCACCACTGTAGGAGGGCAAGAAAGGCATCATTTAGGTTCCGAGATGAAGACTTT
TATTCCATTTTGTCAATGAACAGCAGAAGAGAAAGCGATGACACTGAAGAGGAAACCCAGTCTGAAGAA
TGTCTGTGGGTTGGTGTGCGCTCACCTGTTCTCCTTCCCATCACAAAAGAGTAGATTTGGGGGACA
TCGACCCCTCAGGCCAAAAATAAAAATTTGAAGAAAATGCTGAAAATTCAGAGGTCATTTCTCAAGA
AGAAGTGAGCCAGTCAATGGCTCATTGAGAATAAGCAATGCAATGGAGCCAGCAACAGAGCGCCTTCT
GCTGGGCAAAGGTTGTCCAAGACCCCGGGCTGCCTGATAGGGAATCTGCTACAGAGAAGGACAGAGGT
GCCAGTGAAAATGCGAAAAAGGCCCTTTTCGTGGGACACCAAAATCCGAGCCAGACAAGAGGTTGGT
GTCAATGCTGAAAATGTATGGAGTGATTGATTTCTGTGGAACATAGGCCTGGCACCCATGATTCTGAA
GGATACTGAAAAGACTATTTAAACAGTTCTCAAAATCTCTTGACTACTTTATTTCTGGCAGACCAATA
TCTCCAAGATCATCAGTGAATTCATCTATAACCTCCTGCATCATTGATGACTGCTGCTGAGAGAT
GATATTCCAGTAGACTTGTCAATGTCACTGACTTCAGTTCACAGCTCAGACTCAGAGGAAACTCAGGG
TTTCATGTTTCCAACCACTGTCTCCATTAGAAATAGGACTCCATTTGCCAGTGCCGAAAACATAAT
TATTTCCAGTAAACAGTGCACACGAATTTGCTGTCAGGGAAGCAGAAGATACTACTTTAACAAGCCAG
CCTCAGGGGGCTCCACTATATACAGATCTTACTAAATCCACAGGGCAATTTGCTTAGTGGATTCT
TCCAGCTCCTCTCCATCAAGAATGAACTCAGAAGGCCATTTGCATGTGTCTGGTCTCTGCAAGAAAAT
ACACCATTTACTTTCTTTGCAAGTGTCTCATTTCCAAATCAAAATGATAATGGGAGCAGGATGGCAGCC
TCTGGTTTACAGATGAAAAGGAAACAGTAAGATAAAGGCAGACCCTGAGAAAATCAAGAAATTGCAA
GAAAGTCTCCTGGAGGAGGACTCCGAGGAGGAGGGAGACTTGTGTGCGATCTGTGAGATAGCCGGGGT
TCCCAAGCAACCCCTCCTGGAGCCTTGGGCTGTGTGGGAAGCCTGCAGTTTGTTCATCAAGAGTGC
CTGAAAAAGTGGCTGAAAGTAAAATAACATCAGGAGCAGATCTTGGTGCCGTGAAGACCTGTGAGATG
TGTAAGCAAGGCTGTGGTTGACCTGGGTGACTTTAACATGATTGAGTTCTACCAGAAGCACCAGCAA
TCTCAGGCACAAAACGAGCTGATGAATTCAGGCTTGTACCTGGTGTGCTGCTTACCTCTATGAGCAG
AGGTTTGCAGAACTCATGAGGCTCAACCAACACAGGTGGAAGAGAGAGGTTGTCAAGAAATTACCA
CAACCCAGAACAGAGGAAAATGAAAATTCGGAGTTGGGAGATGGAATGAAGGCAGCATTCTCAAAGC
CAGGTCGTC
ACGCGTACGCGGCCGCTCGAGCAGAACTCATCTCAGAAGAGGATCTGGCAGCAATGATATCCTGGAT
TACAAGGATGACGACGATAAGGTTAAACGGCCGGC
```

Protein Sequence: >Peptide sequence encoded by RC206212
 Blue=ORF Red=Cloning site Green=Tag(s)

MLHDARDRQKFFSDVQYLQDMQHKVDSEYQAQLRRQYRRDPNEKKRDQFWGQETSFERSRFSSRSSK
 QSSSEEDALTEPRSSIKISAFKCDSKLPAIDQTSVKQKHKSTMTVRKAEKVDPSESPADQAPMVLRLK
 RKPMLRRFTVSPESHSPRASGDRSRQKQWPAPKVPVPRGADQVVQEQGLMCNTKLRPNQERRNLVPSS
 QPMTENAPDRAKKGDPSAPSQSELHPALSQAFQGKNSPQVLEFSGPPLTPPTTVGGPRKASFRFRDEDF
 YSILSLNSRRESDDTEETQSEECLEWVGRSPSPSHHKRSRFGGTSTPQAKNKNFEENAENCRGHSSR
 RSEPSHGSLRISNAMEPATERPSAGQRLSQDPGLPDRESATEKDRGGSSENAKKSPLSWDTKSEPRQEVG
 VNAENVWSDCISVEHRPGTHDSEGYWKDYLNSSQNSLDYFISGRPISPRSSVNSSYNPPASFMSALRD
 DIPVDLSMSSTSVHSSDSEGNSGFHVCQPLSPIRNRTPFASAENHNYFPVNSAHEFAVRAEDTTLTSQ
 PQGAPLYDLLLLNPQGNLSLVDSSSSPSRMNSEGHLHVSGSLQENTPFTFFAVSHFPNQNDNGSRMAA
 SGFTDEKETSNIKADPELKKLQESLLEEDSEEGDLCRICQIAGGSPSNLLEPCGCVGSLQFVHQEC
 LKKWLKVKITSGADLGA VKTCEMCKQGLLVDLGFNMIEFYQKHQSSQAQNELMNSGLYL VLLLHLVEQ
 RFAELMRLNHNQVERERLSRNYQPRTTEENENSELGDGNEGSISSQSVV
 TRTRPLEQKLISEEDLAANDILDYKDDDDKV

Restriction Sites: SgfI-MluI

Cloning Scheme:



ACCN: NM_152598

ORF Size: 2424 bp

OTI Disclaimer: The molecular sequence of this clone aligns with the gene accession number as a point of reference only. However, individual transcript sequences of the same gene can differ through naturally occurring variations (e.g. polymorphisms), each with its own valid existence. This clone is substantially in agreement with the reference, but a complete review of all prevailing variants is recommended prior to use. [More info](#)

OTI Annotation: This clone was engineered to express the complete ORF with an expression tag. Expression varies depending on the nature of the gene.

Components: The ORF clone is ion-exchange column purified and shipped in a 2D barcoded Matrix tube containing 10ug of transfection-ready, dried plasmid DNA (reconstitute with 100 ul of water).

Reconstitution Method:

1. Centrifuge at 5,000xg for 5min.
2. Carefully open the tube and add 100ul of sterile water to dissolve the DNA.
3. Close the tube and incubate for 10 minutes at room temperature.
4. Briefly vortex the tube and then do a quick spin (less than 5000xg) to concentrate the liquid at the bottom.
5. Store the suspended plasmid at -20°C. The DNA is stable for at least one year from date of shipping when stored at -20°C.

RefSeq Size: 3153 bp

RefSeq ORF: 2427 bp

Locus ID: 162333

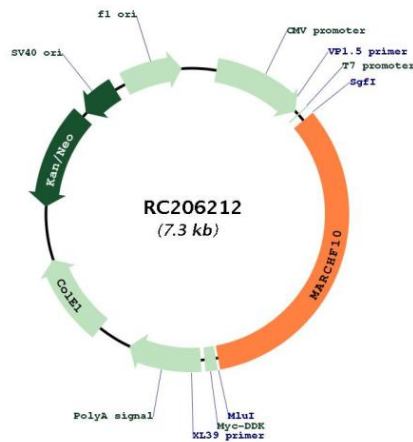
UniProt ID: [Q8NA82](#)

Cytogenetics: 17q23.2

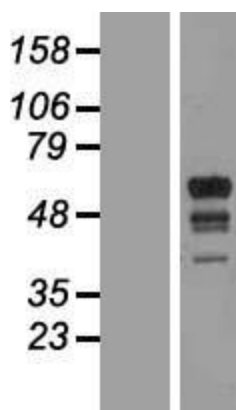
MW: 90.5 kDa

Gene Summary: MARCH10 is a member of the MARCH family of membrane-bound E3 ubiquitin ligases (EC 6.3.2.19). MARCH enzymes add ubiquitin (see MIM 191339) to target lysines in substrate proteins, thereby signaling their vesicular transport between membrane compartments (Morokuma et al., 2007 [PubMed 17604280]).[supplied by OMIM, Apr 2010]

Product images:



Circular map for RC206212



Western blot validation of overexpression lysate (Cat# [LY420299]) using anti-DDK antibody (Cat# [TA50011-100]). Left: Cell lysates from untransfected HEK293T cells; Right: Cell lysates from HEK293T cells transfected with [RC218712] using transfection reagent MegaTran 2.0 (Cat# [TT210002]).