

## Product datasheet for RC206209

### KIAA1712 (CEP44) (NM\_001040157) Human Tagged ORF Clone

#### Product data:

Product Type:	Expression Plasmids
Product Name:	KIAA1712 (CEP44) (NM_001040157) Human Tagged ORF Clone
Tag:	Myc-DDK
Symbol:	KIAA1712
Synonyms:	KIAA1712; PS1TP3
Mammalian Cell Selection:	Neomycin
Vector:	pCMV6-Entry (PS100001)
E. coli Selection:	Kanamycin (25 ug/mL)
ORF Nucleotide Sequence:	>RC206209 representing NM_001040157 Red=Cloning site Blue=ORF Green=Tags(s)

TTTTGTAATACGACTCACTATAGGGCGGCCGGAATTCGTCGACTGGATCCGGTACCGAGGAGATCTGCC  
GCC**CGATCGCC**

ATGGCAACAGGTGACTTAAAAAGAAGCTTACGGAACCTAGAACAGGTGCTCCGCTTGCTAAATTATCCTG  
AAGAGGTGGACTGTGTAGGTTTGATAAAGGGAGACCCAGCAGCATCTTGGCCATCATCAGCTATTCTTT  
TACCTCACTCACCTTATGTAACAGAACTTATAATGGAATCCAATGTAGAGCTCATAGCAAAAAATGAC  
TTGCGCTTATAGATGCTGTCTATAAGCTTCTTCGTGATCAATTTAATTATAAACCAATTTTGACAAAA  
AGCAGTTTATCCAATGTGGGTTTGCAGAATGGAATCCAAATGTTTGTGATATTTGAATTGTGTGAT  
GAAAAAGCACAAGGAATTAAGCAGTCTTCAGAAGATCCATCACAAAGAAAGAAAATCAGTTCTGGT  
AAGTCAGAACCTCCTTTGGGCAATGAGAAAATATCTGCAGAGGCTGTTGGCGTTGATATCAGTGGCAGGT  
TTATGACCTCAGGAAAGAAGAAAGCTGTGGTGATTTCGTCACCTGTATAATGAAGATAATGTTGACATTT  
TGAGGATACATTAAGTCCAATAACAGATGTTAATGAAGCAGTTGATGTGTCTGACTTAAATGCTACTGAA  
ATAAAGATGCCTGAAGTAAAGGTTCTGAAATCAAGGCTGAGCAACAGGATGTAATGTTAATCCTGAGA  
TTACTGCACTACAACTATGCTTGCTGAATGCCAAGAAAATCTTAAGAACTGACTTCGATAGAGAAAAG  
GTTAGACTGTTTGAACAAAAATGAAAGGAAAAGTGTGGTAGATGAAAACACCTGGACTAATCTTCTT  
AGTCGTGCTACTTCTTGAACAGAAAATGCTTTTGTCTAAAAAGAAATGATGAATTTATAGAGTTTAAATG  
AAGTTAGTGAAGACTACGCTTCTTGATAGTACATGGACCTTCTGAATCCTCACAGAAAAAGCGAAGTGA  
GAGGCCAGCAAGTATTCCTCTGCTCTGGCTATAGTACAGCATCATCAGATTCAACTCCAGAGCCTCT  
ACTGTTAATTAAGTGTGGTTTGAATGAGATTTTCAGAGGAAACAACAATCCAGAAAATGAAAGGATGAAAA  
AAATGTTTGAAGAACTGCAGAGTTACTGAAATGTCCAAATCACTACTTG

**ACGCGT**ACGCGGCCGCTCGAGCAGAAAATCATCTCAGAAGAGGATCTGGCAGCAATGATATCCTGGATT  
ACAAGGATGACGACGATAAGGTTTAA



[View online »](#)

**Protein Sequence:** >RC206209 representing NM\_001040157  
Red=Cloning site Green=Tags(s)

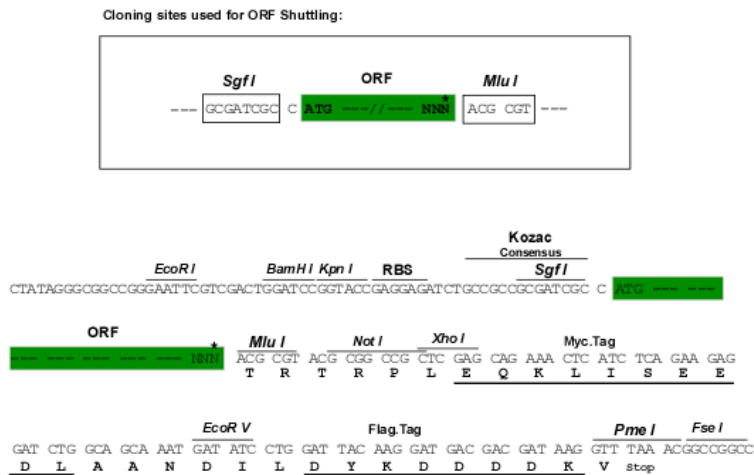
MATGDLKRSLRNLEQVLRLLNYPPEEVDVGLIKGDPAASLPIISYSFTSYSPYVTELI MESNVELIAKND  
 LRFIDAVYKLLRDQFNYPILTKKQFIQCGFAEWKIQIVCDILNCVMKKHKELSSLQKIPSQQRKKISSG  
 KSEPLGNEKISAEAVGVDISGRFMTSGKKKAVVIRHLYNEDNVDISEDTLSPITDVNEAVDVS DLNATE  
 IKMPEVKVPEIKAEQQDVNVNPEITALQTMLAECQENLKKLTSIEKRLDCLEQKMKGKVMVDENTW TNL  
 SRVTLLLETEMLLSKKNDEFIEFNEVSEDYASCSMDLLNPHRKSEVERPASIP LSSGYSTASSDSTPRAS  
 TVNYCGLNEISEETTIQKMERMKMFEETAELLKCPNHYL

TRTRPLEQKLISEEDLAANDILDYKDDDDKV

**Chromatograms:** [https://cdn.origene.com/chromatograms/mg3554\\_c05.zip](https://cdn.origene.com/chromatograms/mg3554_c05.zip)

**Restriction Sites:** SgfI-MluI

**Cloning Scheme:**



\* The last codon before the Stop codon of the ORF

**ACCN:** NM\_001040157

**ORF Size:** 1170 bp

**OTI Disclaimer:** The molecular sequence of this clone aligns with the gene accession number as a point of reference only. However, individual transcript sequences of the same gene can differ through naturally occurring variations (e.g. polymorphisms), each with its own valid existence. This clone is substantially in agreement with the reference, but a complete review of all prevailing variants is recommended prior to use. [More info](#)

**OTI Annotation:** This clone was engineered to express the complete ORF with an expression tag. Expression varies depending on the nature of the gene.

**Components:** The ORF clone is ion-exchange column purified and shipped in a 2D barcoded Matrix tube containing 10ug of transfection-ready, dried plasmid DNA (reconstitute with 100 ul of water).

**Reconstitution Method:**

1. Centrifuge at 5,000xg for 5min.
2. Carefully open the tube and add 100ul of sterile water to dissolve the DNA.
3. Close the tube and incubate for 10 minutes at room temperature.
4. Briefly vortex the tube and then do a quick spin (less than 5000xg) to concentrate the liquid at the bottom.
5. Store the suspended plasmid at -20°C. The DNA is stable for at least one year from date of shipping when stored at -20°C.

**RefSeq:** [NM\\_001040157.3](#)

**RefSeq Size:** 4503 bp

**RefSeq ORF:** 1173 bp

**Locus ID:** 80817

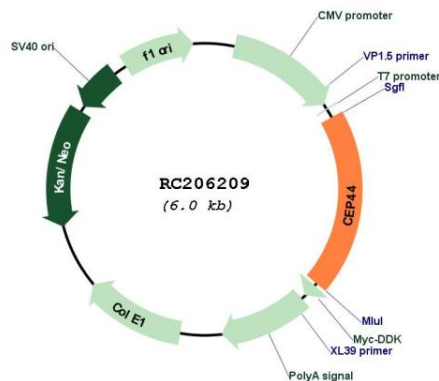
**UniProt ID:** [Q9C0F1](#)

**Cytogenetics:** 4q34.1

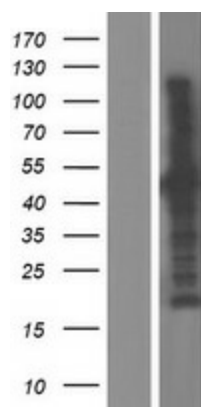
**MW:** 44 kDa

**Gene Summary:** Centriole-enriched microtubule-binding protein involved in centriole biogenesis. In collaboration with CEP295 and POC1B, is required for the centriole-to-centrosome conversion by ensuring the formation of bona fide centriole wall (PubMed:32060285). Functions as a linker component that maintains centrosome cohesion. Associates with CROCC and regulates its stability and localization to the centrosome (PubMed:31974111). [UniProtKB/Swiss-Prot Function]

### Product images:



Circular map for RC206209



Western blot validation of overexpression lysate (Cat# [LY421699]) using anti-DDK antibody (Cat# [TA50011-100]). Left: Cell lysates from untransfected HEK293T cells; Right: Cell lysates from HEK293T cells transfected with RC206209 using transfection reagent MegaTran 2.0 (Cat# [TT210002]).