

Product datasheet for **RC206203**

HIPK1 (NM_198269) Human Tagged ORF Clone

Product data:

Product Type:	Expression Plasmids
Product Name:	HIPK1 (NM_198269) Human Tagged ORF Clone
Tag:	Myc-DDK
Symbol:	HIPK1
Synonyms:	Myak; Nbak2
Mammalian Cell Selection:	Neomycin
Vector:	pCMV6-Entry (PS100001)
E. coli Selection:	Kanamycin (25 ug/mL)



[View online »](#)

ORF Nucleotide Sequence:

>RC206203 ORF sequence
 Red=Cloning site Blue=ORF Green=Tags(s)

TTTTGTAATACGACTCACTATAGGGCGGCCGGGAATTCGTCGACTGGATCCGGTACCGAGGAGATCTGCC
 GCC**CGCATCGCC**

ATGTGGTCACTGGGCTGTGTGATAGCTGAGCTGTTCTCGGATGGCCTCTTTATCCTGGTGCCTCAGAAT
 ATGATCAGATTCGTTATATTTCAACAACACAAGGCTTGCCAGCTGAATATCTTCTCAGTGCCGGAACAAA
 AACCAACCAGGTTTTTCAACAGAGATCCTAATTTGGGGTACCCACTGTGGAGGCTTAAACACCTGAAGAA
 CATGAACTGGAGACTGGAATAAAATCAAAAAGAAGCTCGGAAGTACATTTTTAATTGCTTAGATGACATGG
 CTCAGGTGAATATGTCTACAGACCTGGAGGGAACAGACATGTTGGCAGAGAAGGCAGACCGAAGAGAATA
 CATTGATCTGTTAAAGAAAATGCTCACAATTGATGCAGATAAGAGAATTACCCCTCTAAAACTCTTAAC
 CATCAGTTTGTGACAATGACTCACCTTTTGGATTTTCCACATAGCAATCATGTTAAGTCTTGTTCAGAA
 ACATGGAGATCTGCAAGCGGAGGGTTCACATGTATGATACAGTGAGTCAGATCAAGAGTCCCTTCACTAC
 ACATGTTGCCCAAATACAAGCACAATCTAACCATGAGCTTCAGCAATCAGCTCAATACAGTGCACAAT
 CAGGCCAGTGTCTAGCTTCCAGTTCTACTGCAGCAGCTGCTACTCTTTCTCTGGCTAATTCAGATGTCT
 CACTACTAACTACCAGTCAGCTTTGTACCCATCATCTGCTGCACCAGTTCCTGGAGTTGCCAGCAGGG
 TGTTCCTTGACGCTGGAACCACCCAGATTTGCACTCAGACAGATCCATTCCAACAGACATTTATAGTA
 TGTCACCTGCGTTTTCAAAGTGGACTACAAGCAACAACAAGCATTCTGGATTCCCTGTGAGGATGGATA
 ATGCTGTACCAATTGTACCCAGGCACCAGCTGCTCAGCCACTACAGATTCAGTCAGGAGTTCTCACGCA
 GGAAGCTGTACCCACTAATGGTAGCAACTCTCCACCCTCAAGTAGCCACCATCACACCGCAGTATGCG
 GTGCCCTTACTCTGAGCTGCGCAGCCGGCCGGCCGGCGCTGGTTGAACAGACTGCCGCTGTACTGCAGG
 CGTGGCCTGGAGGACTCAGCAAATCTCTGCCTTCAACTTGGCAACAGTTGCCTGGGTTAGCTTACACA
 CAACTCTGTCCAGCCACAGCAATGATTCCAGAGGCCATGGGGAGTGGACAGCAGCTAGCTGACTGGAGG
 AATGCCCACTCTCATGGCAACCAGTACAGCACTATCATGCAGCAGCCATCCTTGTGACTAACCATGTGA
 CATTGGCCACTGCTCAGCCTCTGAATGTTGGTGTGCCCATGTTGTGAGCAACAACAATCCAGTCCCT
 CCCTTCGAAGAAGAATAAGCAGTCAGCTCCAGTCTCTTCCAAGTCTCTAGATGTTCTGCCTTCCCAA
 GTCTATTCTCTGGTTGGGAGCAGTCCCCTCCGACCACATCTTCTATAATTCTTGGTCCCTGTCCAAG
 ATCAGCATCAGCCATCATATTCCAGATACTCCAGCCCTCCTGTGAGTGCATCACTATCCGAAGTGA
 CACTGATGAGGAAGAGGACAACAATAACAAGCCAGTAGCTCTGGACTGAAGCCAAGGTCTAATGTCATC
 AGTTATGCTACTGTCAATGATTCTCCAGACTCTGACTCTTCTTTGAGCAGCCCTATTCCACTGATACCC
 TGAGTGTCTCCGAGGCAATAGTGGATCCGTTTTGGAGGGGCTGGCAGAGTTGTGGCAGATGGCACTGG
 CACCCGCACTATCATTGTGCCTCCACTGAAAACCTCAGCTTGGTACTGCACTGTAGCAACCCAGGCCTCA
 GGTCTCCTGAGCAATAAGACTAAGCCAGTCGCTTCAGTGAGTGGGCAGTCATCTGGATGTGTATCACCC
 CCACAGGGTATCGAGCTCAACCGGGGGGACCAGTGCAGCACAACCCTCAATCTTAGCCAGAACCAGCA
 GTCATCGGCGGCTCCAACCTCACAGGAGAGAAGCAGCAACCCAGCCCCCGCAGGCAGCAGGCGTTTGTG
 GCCCTCTCTCCAAGCCCCCTACACCTCCAGCATGGCAGCCCGCTACACTCGACAGGGCACCCACACC
 TTGCCCGGCCCTGCTCACCTGCCAAGCCAGGCTCATCTGTATACGTATGCTGCCCGACTTCTGCTGC
 TGCACTGGGCTCAACCAGCTCCATTGCTCATCTTTCTCCACAGGGTTCCTCAAGGCATGCTGCAGCC
 TATACCACTCACCTAGCACTTTGGTGACCAGTCCCTGTGAGTGTGGGCCACGCCTCCTCACTTCTG
 CCAGCGTGGCCCTGCTCAGTACCAACACCAGTTTCCACCCAATCCTACATTGGGTCTTCCCGAGGCTC
 AACAAATTAACACTGGATACCCGCTGAGTCTACCAAGATCAGCCAGTATTCCTACTTA

ACGCGTACGCGGCCGCTCGAGCAGAACTCATCTCAGAAGAGGATCTGGCAGCAATGATATCCTGGATT
 ACAAGGATGACGACGATAAGGTTTAA

Protein Sequence: >RC206203 protein sequence
Red=Cloning site Green=Tags(s)

MWSLGCVIAELFLGWPLYPGASEYDQIRYISQTQGLPAEYLLSAGTKTTRFFNRDPNLGYPLWRLKTPEE
HELETGIKSKEARKYIFNCLDDMAQVNMSTDLEGDMMLAEKADRREYIDLLKMLTIDADKRITPLKTLN
HQFVTMTHLLDFPHSNHVKSCFQNMICKRRVHMYDVSQIKSPFTTHVAPNTSTNLTMSFSNQLNTVHN
QASVLASSSTAAAATLSLANSVSLNLYQSALYPSSAAPVPGVAQQGVSLQPGTTQICTQTDPPFQQTFFIV
CPPAFQTGLQATTKHSGFPVRMDNAVPIVPQAPAAQPLQIQSGVLTQGSCTPLMVATLHPQVATITPQYA
VPFTLSCAAGRPALVEQTAAVLQAWPGGTQQILLPSTWQQLPGVALHNSVQPTAMIPEAMGSGQLADWR
NAHSHGNQYSTIMQQPSLLTNHVTLATAQPLNVGVAHVVRQQSSSLPSKKNKQSAPVSSKSSLDVLP
VYSLVGSPLRTTSSYNLVPVQDQHQP I IIPDTPSPVSVITIRSDTDEEEDNKYKSSSGLKPRSNVI
SYVTVNDSPDSDSSLSSPYSTDLSALRGNSGSVLEGPGRVVDGTGTRTIIIVPPLKTQLGDCTVATQAS
GLLSNKTKPVASVSGSSGCCITPTGYRAQRGGTSAAPLNLSQNNQSSAAPT SQERSSNPAPRRQQAFV
APLSQAPYTFQHGSPHSTGPHLAPAPAHLPQAHLTYAAPTAAAALGSTSSIAHLFSPQSSSRHAAA
YTHPSTLVHQVPVSVGPSLLTSASVAPAQYQHOFATQSYIGSSRGSTIYTGYP LSPTKISQYSYL

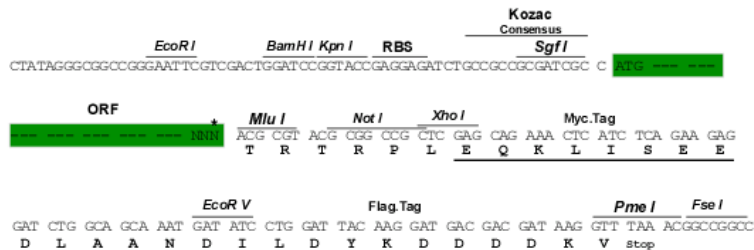
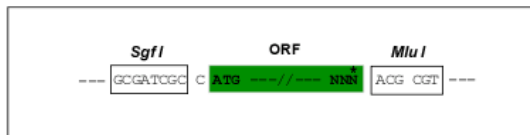
TRTRPLEQKLISEEDLAANDILDYKDDDDKV

Chromatograms: https://cdn.origene.com/chromatograms/mk6791_a01.zip

Restriction Sites: Sgfl-Mlul

Cloning Scheme:

Cloning sites used for ORF Shutting:



* The last codon before the Stop codon of the ORF

ACCN: NM_198269

ORF Size: 2508 bp

OTI Disclaimer: The molecular sequence of this clone aligns with the gene accession number as a point of reference only. However, individual transcript sequences of the same gene can differ through naturally occurring variations (e.g. polymorphisms), each with its own valid existence. This clone is substantially in agreement with the reference, but a complete review of all prevailing variants is recommended prior to use. [More info](#)

OTI Annotation: This clone was engineered to express the complete ORF with an expression tag. Expression varies depending on the nature of the gene.

Components: The ORF clone is ion-exchange column purified and shipped in a 2D barcoded Matrix tube containing 10ug of transfection-ready, dried plasmid DNA (reconstitute with 100 ul of water).

Reconstitution Method:

1. Centrifuge at 5,000xg for 5min.
2. Carefully open the tube and add 100ul of sterile water to dissolve the DNA.
3. Close the tube and incubate for 10 minutes at room temperature.
4. Briefly vortex the tube and then do a quick spin (less than 5000xg) to concentrate the liquid at the bottom.
5. Store the suspended plasmid at -20°C. The DNA is stable for at least one year from date of shipping when stored at -20°C.

RefSeq: [NM_198269.2](#)

RefSeq Size: 7066 bp

RefSeq ORF: 2511 bp

Locus ID: 204851

UniProt ID: [Q86Z02](#)

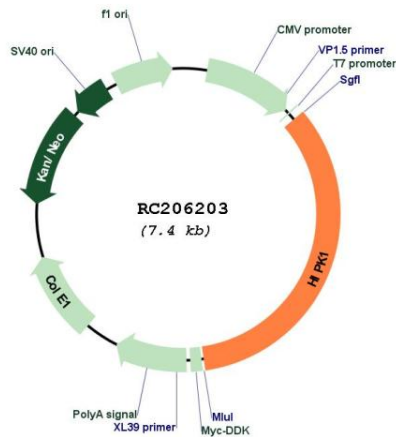
Cytogenetics: 1p13.2

Protein Families: Druggable Genome, Protein Kinase, Transcription Factors

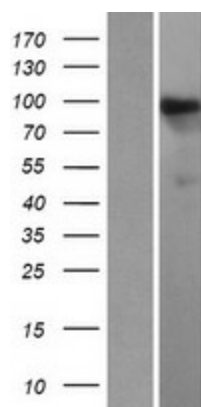
MW: 89.5 kDa

Gene Summary: The protein encoded by this gene belongs to the Ser/Thr family of protein kinases and HIPK subfamily. It phosphorylates homeodomain transcription factors and may also function as a co-repressor for homeodomain transcription factors. Alternative splicing results in four transcript variants encoding four distinct isoforms. [provided by RefSeq, Jul 2008]

Product images:



Circular map for RC206203



Western blot validation of overexpression lysate (Cat# [LY404996]) using anti-DDK antibody (Cat# [TA50011-100]). Left: Cell lysates from untransfected HEK293T cells; Right: Cell lysates from HEK293T cells transfected with RC206203 using transfection reagent MegaTran 2.0 (Cat# [TT210002]).