

Product datasheet for **RC206199**

FBXW8 (NM_153348) Human Tagged ORF Clone

Product data:

Product Type:	Expression Plasmids
Product Name:	FBXW8 (NM_153348) Human Tagged ORF Clone
Tag:	Myc-DDK
Symbol:	FBXW8
Synonyms:	FBW6; FBW8; FBX29; FBXO29; FBXW6
Mammalian Cell Selection:	Neomycin
Vector:	pCMV6-Entry (PS100001)
E. coli Selection:	Kanamycin (25 ug/mL)



[View online »](#)

ORF Nucleotide Sequence:

>RC206199 representing NM_153348
 Red=Cloning site Blue=ORF Green=Tags(s)

TTTTGTAATACGACTCACTATAGGGCGGCCGGAATTCGTCGACTGGATCCGGTACCGAGGAGATCTGCC
 GCC**CGGATCGCC**

ATGGACGACTACAGCCTGGATGAGTTCCGTGCGGCTGGCAGGAGAGCTGGCGCAGGCCAGGCGCCGA
 AGAAGCGGCGACGGCCGAGGCTGCCGAGAGCGGGCTCGGCGGCCGAGGTGGCTCCGGGCGCGCGCA
 ACAGGCCCTCGGGGACCCGGCGCTGGCCACGCTCTCCTGGAGGCGCGGGAGGCCCGGCGCGCGG
 GCGACTCGGGCCGAGGGCAGGACGTAGCGAGCCGCTCACGTTCTCCTTGCCCGCAGGGCGCCGGG
 GCGGGGAGCAGCTGGTGGACCAGCTCATCCGCGACCTGAATGAAATGAATGATGTGCCTTTCTTTGATAT
 CCAACTGCCTTACGAATTGGCAATCAATATATTTCACTATCTGGACAGGAAAGAACTAGGAAGATGTGCA
 CAGGTGAGCAAGACGTGGAAGGTGATTGCAGAGGATGAGGTGCTGTGGTACAGGCTGTGCCAGCAGGAAG
 GGCACCTTCCGGATAGCAGCATCTGACTATTCTTGTGGAAGCTCATCTTCAAGAGTGCCGAGCCAA
 GGAACACATGTTACGAACCAACTGGAAGAATCGCAAAGGTGCCGTGAGCGAGCTGGAGCATGTTCTGAC
 ACAGTTTTGTGTGATGTGCATTCTCACGATGGTGTGGTATTGCGGGATATACATCAGGGATGTGAGAG
 TGTGGGACACCCGACCTGGGACTACGTAGCCCCCTTCTGGAATCAGAGGACGAGGAGGATGAGCCTGG
 AATGCAGCCAAATGTCTCCTTTGTGAGGATAAACAGCTCGTTGGCAGTAGCAGCTTATGAGGATGGGTTT
 CTTAATATTTGGGATTTAAGGACCGGAAAGTACCCTGTTTCATCGTTTTGAGCAGGATGCAAGAATACAGG
 CACTAGCCCTCAGCCAGGACGATGCAACCGTGGCCACAGCTTCTGCTTTTGTGTCGTGATGTTATCCCC
 CAATGAGGAGGGTACTGGCAGTAGCTGCGGAATTTGAAGTCCGAACTGGTTCAGTACCTTGAATA
 GTTCCAGAAACCAGAAGGTACCCTGTGGCAGTAGCCGCTGCTGGAGATCTGATGTACCTGTCAAAGCCC
 AAGACTCCGCCAGAACCCTCCTTACGCCACGGCCCGCTGTACATGTCTAGACGTCTCGGCCAACCA
 AGTTGCTTTTGGTGTACAGGGTCTGGGATGGGTGTACGAAGGAAGCAAGATCCTGGTGTATAGCCTGGAA
 GCAGGACGCCCTCTTGAAGCTGGTAACGTTCTCCGTGACTTCACGTGTGTAACCTCAGCGACAGCC
 CTCCAACCTCATGGTCACTGGCAACATGGACGGGAGGGTGGAGTCCACGACCTCCGAGTGGTAACAT
 CGCCCTGTGCTCTCCGCCATCAGCTCAGGGTCTCTGCTGTGCAGATGGATGACTGGAAGATCGTCAGT
 GGAGGCGAGGAAGGCTGGTGTCCGTGTGGATTATCGGATGAACCAGAAGCTGTGGGAGGTGATTCCG
 GGCACCCGGTGCAGCACATCTATTACAGCCACAGCCTCATCACGGCCACGTCCTTACCAGACGGT
 AATGCGAAACGCCGACCTGGACAGCTTCACTACTCACAGGAGACACCGGGGGCTGATCCGCGCTATGAG
 TTTGCGGTGGACAGCTGGCCTTCCAGAGCCCTCTCCCTGTCTCCGTTTCATCTGTGACCCATGGCCA
 CTCACTACTACGACCTCGCACTGGCCTTCCCTATAACCATGTT

ACGCGTACGCGGCCGCTCGAGCAGAAACTCATCTCAGAAGAGGATCTGGCAGCAAATGATATCCTGGATT
 ACAAGGATGACGACGATAAGGTTTAA

Protein Sequence:

>RC206199 representing NM_153348
 Red=Cloning site Green=Tags(s)

MDDYSLDEFRRRWQEELAQAPKRRRPEAAERRARRPEVSGRGEQASGDPALAQRLLEGAGRPPAAR
 ATRAEGQDVASRSRPLAREGAGGGEQLVDQLIRDLNEMNDVPPFDIQLPYELAINIFQYLDRKELGRCA
 QVSKTWKVIAEDEVLYRQCQEGHLPDSSI SDYSCWKLIFQECRAKEHMLRTNWKNRKGAVSELEHVPD
 TVLCDVHSHDGVVIAGYTSGDVRVWDTRTWYVAPFLESEDEDEPGMQPNVSVFVRINSSLAVAAYEDGF
 LNIWDLRTGKYPVHRFEHDARIQALALSQDDATVATASAFDVVMLSPNEEGYWQIAAEFEVPKLVQYLEI
 VPETRRYPVAVAAAGDLMYLLKAEDSARTLLYAHGPPVTCLDVSNQVAFGVQGLGWVYEGSKILVYSLE
 AGRRLKLGVLNLRDFTCVNLSDSPPNLMVSGNMDGRVRIHDLRSGNIALSLSAHQLRVSAVQMDWKIVS
 GGEEGLVSVWDYRMNQKLWEVYSGHPVQHISFSSHLITANVPYQTVMRNADLDSFTTTHRRHRLIRAYE
 FAVDQLAFQSPPLPVCRSSCDAMATHYYDLALAFPNHV

TRTRPLEQKLISEEDLAANDILDYKDDDDKV

Chromatograms:

https://cdn.origene.com/chromatograms/mg4354_f10.zip

Restriction Sites: SgfI-MluI

Cloning Scheme:



ACCN: NM_153348

ORF Size: 1794 bp

OTI Disclaimer: Due to the inherent nature of this plasmid, standard methods to replicate additional amounts of DNA in E. coli are highly likely to result in mutations and/or rearrangements. Therefore, OriGene does not guarantee the capability to replicate this plasmid DNA. Additional amounts of DNA can be purchased from OriGene with batch-specific, full-sequence verification at a reduced cost. Please contact our customer care team at custsupport@origene.com or by calling 301.340.3188 option 3 for pricing and delivery.

The molecular sequence of this clone aligns with the gene accession number as a point of reference only. However, individual transcript sequences of the same gene can differ through naturally occurring variations (e.g. polymorphisms), each with its own valid existence. This clone is substantially in agreement with the reference, but a complete review of all prevailing variants is recommended prior to use. [More info](#)

OTI Annotation: This clone was engineered to express the complete ORF with an expression tag. Expression varies depending on the nature of the gene.

Components: The ORF clone is ion-exchange column purified and shipped in a 2D barcoded Matrix tube containing 10ug of transfection-ready, dried plasmid DNA (reconstitute with 100 ul of water).

Reconstitution Method:

1. Centrifuge at 5,000xg for 5min.
2. Carefully open the tube and add 100ul of sterile water to dissolve the DNA.
3. Close the tube and incubate for 10 minutes at room temperature.
4. Briefly vortex the tube and then do a quick spin (less than 5000xg) to concentrate the liquid at the bottom.
5. Store the suspended plasmid at -20°C. The DNA is stable for at least one year from date of shipping when stored at -20°C.

RefSeq: [NM_153348.3](#)

RefSeq Size: 4871 bp

RefSeq ORF: 1797 bp

Locus ID: 26259

UniProt ID: [Q8N3Y1](#)

Cytogenetics: 12q24.22

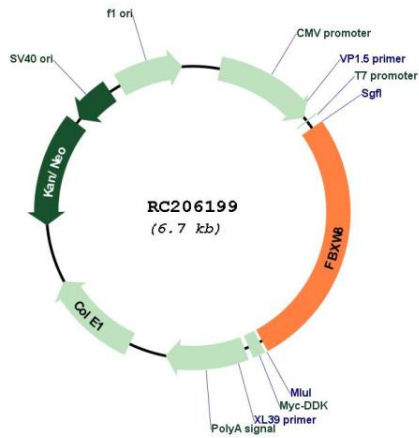
Protein Families: Druggable Genome

Protein Pathways: Ubiquitin mediated proteolysis

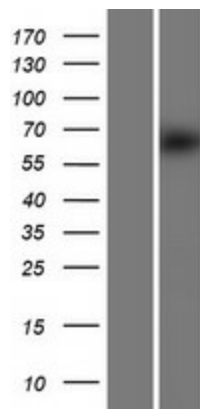
MW: 67.2 kDa

Gene Summary: This gene encodes a member of the F-box protein family, members of which are characterized by an approximately 40 amino acid motif, the F-box. The F-box proteins constitute one of the four subunits of ubiquitin protein ligase complex called SCFs (SKP1-cullin-F-box), which function in phosphorylation-dependent ubiquitination. The F-box proteins are divided into three classes: Fbws containing WD-40 domains, Fbls containing leucine-rich repeats, and Fbxs containing either different protein-protein interaction modules or no recognizable motifs. The protein encoded by this gene contains a WD-40 domain, in addition to an F-box motif, so it belongs to the Fbw class. Alternatively spliced transcript variants encoding distinct isoforms have been identified for this gene. [provided by RefSeq, Jul 2008]

Product images:



Circular map for RC206199



Western blot validation of overexpression lysate (Cat# [LY407065]) using anti-DDK antibody (Cat# [TA50011-100]). Left: Cell lysates from untransfected HEK293T cells; Right: Cell lysates from HEK293T cells transfected with RC206199 using transfection reagent MegaTran 2.0 (Cat# [TT210002]).