

Product datasheet for **RC206193**

ZFYVE27 (NM_144588) Human Tagged ORF Clone

Product data:

Product Type:	Expression Plasmids
Product Name:	ZFYVE27 (NM_144588) Human Tagged ORF Clone
Tag:	Myc-DDK
Symbol:	ZFYVE27
Synonyms:	PROTRUDIN; SPG33
Mammalian Cell Selection:	Neomycin
Vector:	pCMV6-Entry (PS100001)
E. coli Selection:	Kanamycin (25 ug/mL)
ORF Nucleotide Sequence:	>RC206193 ORF sequence Red=Cloning site Blue=ORF Green=Tags(s)

TTTTGTAATACGACTCACTATAGGGCGGCCGGAATTCGTCGACTGGATCCGGTACCGAGGAGATCTGCC
GCC**CGATCGCC**

ATGCAGACATCAGAACGTGAGGGGAGTGGGCCGGAGCTGAGCCCCAGCGTGATGCCCGAGGCTCCCCTGG
AGTCTCCACCTTTTCTACCAAGTCCCCAGCGTTTGACCTTTTCAACTTGGTTCTCTCTACAAGAGGCT
GGAGATCAACCTGGAACCCTTGAAGGATGCAGGTGATGGTGTTCGATACTTGCTCAGGTGGCAGATGCCT
TTGTGTTCTTGTGACCTGCCTGGCCCTCAACGTCTTGTTCCTCACTTTGAATGAGGGTGCATGGTACT
CAGTAGGTGCCCTGATGATTTTCAGTGCCCGCCCTGCTGGGCTACCTTCAGGAGGTTTGCCGGGCACGGCT
GCCTGATCCGAGCTGATGCGGAGGAAGTATCATAGCGTGAGGCAGGAGGACCTGCAGAGAGTTCCGCTG
TCTCGTCCCGAGGCCGTGGCTGAGGTGAAGAGCTTCTTGATCCAGCTGGAGGCCCTTCTGAGCCGCCTGT
GCTGCACATGTGAAGCCGCTACCGCGTGTGCACTGGGAGAACCCCGTGTCTCCTCACAGTTCTATGG
GGCTCTTCTGGGCACAGTCTGCATGCTGTATTTGCTGCCACTCTGCTGGGTTCTCACCCCTTTAAACAGC
ACGCTCTTTCTGGGGAATGTGGAGTTCTCCGAGTTGTGTCTGAGTACAGGGCATCTCTGCAGCAGAGGA
TGAACCCAAAGCAGGAAGAGCATGCCTTGAGAGTCCCTCACCACCAGATGTTGGGGGAAGGATGGTCT
GATGGACAGCACGCTGCCCTCACACCCACGGAGACCTCACACCGGGCAGCGTGGAGGAGGCTGAGGAG
GCTGAGCCAGATGAAGAGTTTAAAGATGCGATTGAGGAGACCCACTTGGTGGTGGAGGATGATGAGG
GCGCCCCGTGCCAGCAGAGGATGAGCTGGCCCTGCAGGACAACGGGTTCTGAGCAAGAATGAGGTGCT
GCGCAGCAAGGTGTCTCGGCTCACGGAGCGGCTCCGCAAGCGCTACCCCAACAACTTCGGAAGTGC
ACGGGCTGCTCGGCCACCTTCTCAGTGCTGAAGAAGAGCGGAGCTGCAGTAATTGTGAAACAGCTTCT
GCTCTCGATGCTGCTCCTCAAGGTGCCAAGTCATCCATGGGGCCACAGCCCTGAAGCCAGAGGGA
GACTGTGTTTGTGTGCTCGTGAACAGACCTTGAGCAAG

ACGCGTACGCGGCCGCTCGAGCAGAACTCATCTCAGAAGAGGATCTGGCAGCAAATGATATCCTGGATT
ACAAGGATGACGACGATAAGGTTTAA



[View online >](#)

Protein Sequence: >RC206193 protein sequence
Red=Cloning site Green=Tags(s)

MQTSEREGSGPELSPVSMPEAPLESPPFPKSPAFLDFNLVLSYKRLINLEPLKDAGDGVRYLLRWQMP
 LCSSLTCLGLNVLFLTLNEGAWYSVGLMISVPALLGYLQEVCRARLPDSELMRRKYHYSVRQEDLQRVRL
 SRPEAVAEVKSFLIQLEAFLSRLCCTCEAAYRVLHWENPVVSSQFYGALLGTVCMLYLLPLCWVLTLLNS
 TLFLGNVEFFRVVSEYRASLQQRMNPKQEEHAFESPPPPDVGGKDGMLDSTPALPTEDLTPGSVEEAE
 AEPDEEFKDAIEETHLVLEDDGAPCPAEDELALQDNGFLSKNEVLRKSVSRLTERLRKRYPTNNGNC
 TGCSATFVLKRRRSCSNCGNSFCRCCSFKVPKSSMGATAPEAQRETVFVCASCNQTLISK

TRTRPLEQKLISEEDLAANDILDYKDDDDKV

Chromatograms: https://cdn.origene.com/chromatograms/mk6072_e11.zip

Restriction Sites: SgfI-MluI

Cloning Scheme:



ACCN: NM_144588

ORF Size: 1233 bp

OTI Disclaimer: The molecular sequence of this clone aligns with the gene accession number as a point of reference only. However, individual transcript sequences of the same gene can differ through naturally occurring variations (e.g. polymorphisms), each with its own valid existence. This clone is substantially in agreement with the reference, but a complete review of all prevailing variants is recommended prior to use. [More info](#)

OTI Annotation: This clone was engineered to express the complete ORF with an expression tag. Expression varies depending on the nature of the gene.

Components: The ORF clone is ion-exchange column purified and shipped in a 2D barcoded Matrix tube containing 10ug of transfection-ready, dried plasmid DNA (reconstitute with 100 ul of water).

Reconstitution Method:

1. Centrifuge at 5,000xg for 5min.
2. Carefully open the tube and add 100ul of sterile water to dissolve the DNA.
3. Close the tube and incubate for 10 minutes at room temperature.
4. Briefly vortex the tube and then do a quick spin (less than 5000xg) to concentrate the liquid at the bottom.
5. Store the suspended plasmid at -20°C. The DNA is stable for at least one year from date of shipping when stored at -20°C.

RefSeq: [NM_144588.7](#)

RefSeq Size: 3059 bp

RefSeq ORF: 1236 bp

Locus ID: 118813

UniProt ID: [Q5T4F4](#)

Cytogenetics: 10q24.2

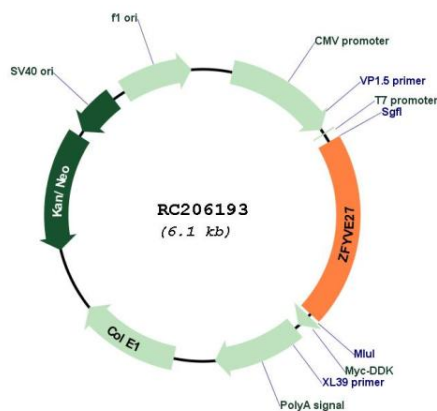
Domains: FYVE

Protein Families: Transmembrane

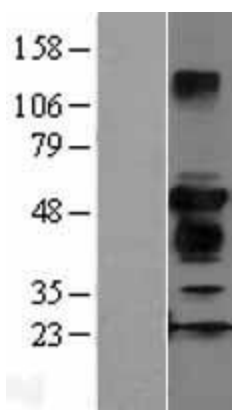
MW: 45.8 kDa

Gene Summary: This gene encodes a protein with several transmembrane domains, a Rab11-binding domain and a lipid-binding FYVE finger domain. The encoded protein appears to promote neurite formation. A mutation in this gene has been reported to be associated with hereditary spastic paraplegia, however the pathogenicity of the mutation, which may simply represent a polymorphism, is unclear. [provided by RefSeq, Mar 2010]

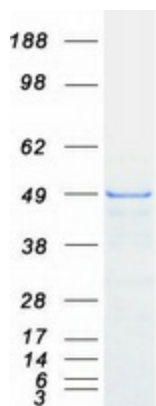
Product images:



Circular map for RC206193



Western blot validation of overexpression lysate (Cat# [LY403394]) using anti-DDK antibody (Cat# [TA50011-100]). Left: Cell lysates from untransfected HEK293T cells; Right: Cell lysates from HEK293T cells transfected with RC206193 using transfection reagent MegaTran 2.0 (Cat# [TT210002]).



Coomassie blue staining of purified ZFYVE27 protein (Cat# [TP306193]). The protein was produced from HEK293T cells transfected with ZFYVE27 cDNA clone (Cat# RC206193) using MegaTran 2.0 (Cat# [TT210002]).