

## Product datasheet for RC206181

### NUDCD3 (NM\_015332) Human Tagged ORF Clone

#### Product data:

Product Type:	Expression Plasmids
Product Name:	NUDCD3 (NM_015332) Human Tagged ORF Clone
Tag:	Myc-DDK
Symbol:	NUDCD3
Synonyms:	NudCL
Mammalian Cell Selection:	Neomycin
Vector:	pCMV6-Entry (PS100001)
E. coli Selection:	Kanamycin (25 ug/mL)
ORF Nucleotide Sequence:	>RC206181 ORF sequence Red=Cloning site Blue=ORF Green=Tags(s)

TTTTGTAATACGACTCACTATAGGGCGGCCGGAATTCGTCGACTGGATCCGGTACCGAGGAGATCTGCC  
GCC**CGATCGC**C

ATGGAGCCAGGGCGGCCGAGCTGTATGACCAGGCCCTTTGGGCATCCTGCAGCACGTGGGCAACGTCC  
AGGATTTCTGCGGTTCTTTGGCTTCTCTACCGCAAGACAGACTTCTATCGCTTGTGCGCCACCC  
ATCGGACCGCATGGCTTCCCGCCGGGGCCGCGCAGGCCTTGGTGTGCAGGTATTCAAAACCTTTGAC  
CACATGGCCCGTCAGGATGATGAGAAGAGAAGGCAGGAACCTGAAGAGAAAATCAGAAGAAAGGAAGAGG  
AAGAGGCCAAGACTGTGTGAGCTGCTGCAGCTGAGAAGGAGCCAGTCCCAGTTCAGTCCAGGAAATAGA  
GATTGACTCCACCACAGAATTGGATGGGCATCAGGAAGTAGAGAAAGTGCAGCCTCCAGGCCCTGTGAAG  
GAAATGGCCCATGGTTCACAGGAGGCAGAAGCTCCAGGAGCAGTTGCTGGTGTGCTGAAGTCCCTAGGG  
AACCACCAATTCTCCAGGATTCAGGAGCAGTTCAGAAAAATCCCGACAGTTACAATGGTGTGTCCG  
AGAGAATACACCTGGTACAGGACTATACTGACCTGGAGGTGAGGTGCCATTACCAAGCACGTGGTG  
AAGGAAAGCAGGTCTCAGTGGCCCTTAGCAGCAGCTCCATTCTGTGGCCATGCTGGAGGAAAATGGGG  
AGTGCCTCCTCATGGAAGGAAGCTCACCCACAAGATCAACACTGAGAGTTCTCTGGAGTCTCGAGCC  
CGGGAAGTGCCTTTGGTGAACCTGAGCAAGGTGGCGAGTATTGGTGGAAACCCATCCTGGAGGGAGAA  
GAGCCCATCGACATTGACAAGATCAACAAGGAGCGCTCCATGGCCACCGTGGATGAGGAGGAACAGGCCG  
TGTTGGACAGGCTTACCTTTGACTACCACAGAAGCTGCAGGGCAAGCCACAGAGCCATGAGCTGAAAGT  
CCATGAGATGCTGAAGAAGGGTGGGATGCTGAAGTTCTCCCTCCGAGGCCAGCGATTGACCCCTGCC  
ATGTTCAACATCTCCCGGGGGCTGTGCAGTTT

**ACCGT**ACGCGGCCGCTCGAGCAGAACTCATCTCAGAAGAGGATCTGGCAGCAATGATATCCTGGATT  
ACAAGGATGACGACGATAAGGTTAA



[View online »](#)

**Protein Sequence:** >RC206181 protein sequence  
Red=Cloning site Green=Tags(s)

```
MEPGAELYDQALLGILQHVGNVQDFLRVLFGLYRKTDYRLLRHPSDRMGFPFGAAQALVLQVFKTFD
HMARQDDEKRRQLEEKIRRKEEEEAKTVSAAAAEKVPVPVQEIIEIDSTTELDGHQEVEKVQPPGPVK
EMAHGSQAEAPGAVAGAAEVPREPPILPRIQEQFKNPDSYNGAVRENYTWSQDYTDLEVRVPLPKHVV
KGKQVSVALLSSSIRVAMLEENGEVLMGKLTHTKINTESSLWSLEPGKCVLVNLSKVGEYWNNAILEGE
EPIDIDKINKERSMATVDEEEQAVLDRLTFDYHQKLGKPKQSHELKVHEMLKKGWDAEGSPFRGQRFDPA
MFNISPGAVQF
```

TRTRPLEQKLISEEDLAANDILDYKDDDDKV

**Chromatograms:** [https://cdn.origene.com/chromatograms/mk6072\\_d01.zip](https://cdn.origene.com/chromatograms/mk6072_d01.zip)

**Restriction Sites:** SgfI-MluI

**Cloning Scheme:**



\* The last codon before the Stop codon of the ORF

**ACCN:** NM\_015332

**ORF Size:** 1083 bp

**OTI Disclaimer:** The molecular sequence of this clone aligns with the gene accession number as a point of reference only. However, individual transcript sequences of the same gene can differ through naturally occurring variations (e.g. polymorphisms), each with its own valid existence. This clone is substantially in agreement with the reference, but a complete review of all prevailing variants is recommended prior to use. [More info](#)

**OTI Annotation:** This clone was engineered to express the complete ORF with an expression tag. Expression varies depending on the nature of the gene.

**Components:** The ORF clone is ion-exchange column purified and shipped in a 2D barcoded Matrix tube containing 10ug of transfection-ready, dried plasmid DNA (reconstitute with 100 ul of water).

**Reconstitution Method:**

1. Centrifuge at 5,000xg for 5min.
2. Carefully open the tube and add 100ul of sterile water to dissolve the DNA.
3. Close the tube and incubate for 10 minutes at room temperature.
4. Briefly vortex the tube and then do a quick spin (less than 5000xg) to concentrate the liquid at the bottom.
5. Store the suspended plasmid at -20°C. The DNA is stable for at least one year from date of shipping when stored at -20°C.

**RefSeq:** [NM\\_015332.3](#), [NP\\_056147.2](#)

**RefSeq Size:** 4932 bp

**RefSeq ORF:** 1086 bp

**Locus ID:** 23386

**UniProt ID:** [Q8IVD9](#)

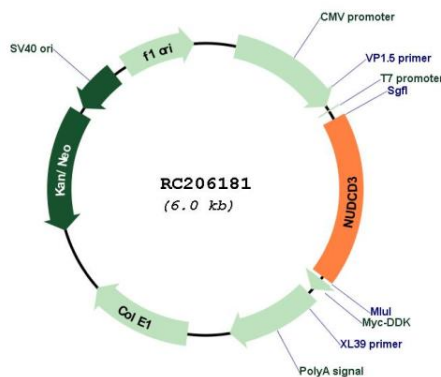
**Cytogenetics:** 7p13

**Domains:** Nuclear\_move

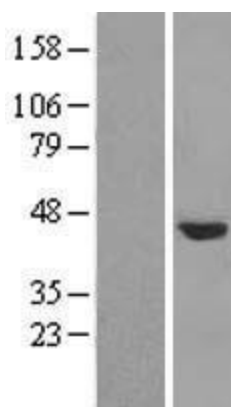
**MW:** 40.8 kDa

**Gene Summary:** The product of this gene functions to maintain the stability of dynein intermediate chain. Depletion of this gene product results in aggregation and degradation of dynein intermediate chain, mislocalization of the dynein complex from kinetochores, spindle microtubules, and spindle poles, and loss of gamma-tubulin from spindle poles. The protein localizes to the Golgi apparatus during interphase, and levels of the protein increase after the G1/S transition. [provided by RefSeq, Jul 2008]

## Product images:



Circular map for RC206181



Western blot validation of overexpression lysate (Cat# [LY414629]) using anti-DDK antibody (Cat# [TA50011-100]). Left: Cell lysates from untransfected HEK293T cells; Right: Cell lysates from HEK293T cells transfected with RC206181 using transfection reagent MegaTran 2.0 (Cat# [TT210002]).