

## Product datasheet for **RC206180**

### **FIBCD1 (NM\_032843) Human Tagged ORF Clone**

#### **Product data:**

Product Type:	Expression Plasmids
Product Name:	FIBCD1 (NM_032843) Human Tagged ORF Clone
Tag:	Myc-DDK
Symbol:	FIBCD1
Mammalian Cell Selection:	Neomycin
Vector:	pCMV6-Entry (PS100001)
E. coli Selection:	Kanamycin (25 ug/mL)



[View online »](#)

**ORF Nucleotide Sequence:**

>RC206180 ORF sequence  
 Red=Cloning site Blue=ORF Green=Tags(s)

TTTTGTAATACGACTCACTATAGGGCGGCCGGAATTCGTCGACTGGATCCGGTACCGAGGAGATCTGCC  
 GCCGCGATCGCC

ATGGTCAACGACCGGTGGAAGACCATGGGCGCGCTGCCAACTTGAGGACCGGCCGCGGACAAGCCG  
 AGCGGCCGAGCTGCGGCTACGTGCTGTGACCGTGTGCTGGCCCTGGCTGTGCTGGCTGTAGCTGT  
 CACCGGTGCCGTGCTCTTCTGAACCACGCCACGCGCCGGGACGCGCCCCACCTGTGCTCAGCACT  
 GGGGCTGCCAGCGCAACAGCGCGTGGTCACTGTGAAAGGGCGGACAGCTCGCACCTCAGCATCTCA  
 TTGACCCGCGCTGCCCGACCTCACCGACAGTTCGCACGCTGGAGAGCGCCAGGCTCGGTGTGCA  
 GGCGCTGACAGAGCACCAGGCCAGCCACGGCTGGTGGGCGACCAGGAGCAGGAGCTGCTGGACAGCTG  
 GCCGACCAGTGCCTCGGCTGTGGCCGAGCCTCAGAGTGCAGACGGAGTGCATGGGGCTGCGGAAG  
 GGCATGGCAGCTGGGCCAGGCTCAGCGCCCTGCAGAGTGCAGAGGGCCGCTCATCCAGTCTCTC  
 TGAGAGCCAGGGCCACATGGCTCACCTGGTGAACCTCCGTCAGCGACATCTGGATGCCCTGCAGAGGGAC  
 CGGGGGCTGGGCCGCGCCGCAACAAGGCCGACCTTCAGAGAGCGCTGCCCGGGGAACCCGCCCCGGG  
 GCTGTGCCACTGGCTCCCGGCCCGAGACTGTCTGGACGCTCTCCTAAGCGGACAGCAGGACGATGGCGT  
 CTACTCTGTCTTCCACCCACTACCCGGCCGGCTTCCAGGTGTACTGTGACATGCGCACGGACGGCGG  
 GGCTGGACGGTGTTCAGCGCCGGGAGGACGGCTCCGTGAACCTTCCGGGGCTGGGATGCGTACCGAG  
 ACGGCTTTGGCAGGCTCACCGGGGAGCACTGGCTAGGGCTCAAGAGGATCCACGCCCTGACCACACAGG  
 TGCTACGAGTGCACGTGGACCTGGAGACTTGTGAAATGGCACGGCTATGCCCGCTACGGGAGCTTC  
 GGCGTGGGCTTGTCTCCGTGGACCTGAGGAAGACGGGTACCCGCTCACCGTGGCTGACTATCCGGCA  
 CTGCAGGCGACTCCCTCCTGAAGCACAGCGGCATGAGGTTCAACCAAGGACCGTGACAGCGACCATC  
 AGAGAACAACACTGTGCCGCTTCTACCGCGTGCCTGGTGGTACCGCAACTGCCACACGTCCAACCTCAAT  
 GGGCAGTACCTGCGCGGTGCGCACGCTCCTATGCCGACGGCTGGAGTGGTCTCTGGACCGGCTGGC  
 AGTACTCACTCAAGTTCTCTGAGATGAAGATCCGGCCGGTCCGGGAGGACCGC

ACGCGTACGCGGCCGCTCGAGCAGAACTCATCTCAGAAGAGGATCTGGCAGCAAATGATATCCTGGATT  
 ACAAGGATGACGACGATAAGGTTTAA

**Protein Sequence:**

>RC206180 protein sequence  
 Red=Cloning site Green=Tags(s)

MVNDRWKTMGAAQLEDPRDKPQRPSGYYLCTVLLALAVLLAVAVTGAVLFLNHAHAPGTAPPPVST  
 GAASANSVVTVRADSSHL SIL IDPRCPDL TDSFARLESAQASVLQAL TEHQAPRLVGDQEQELLDL  
 ADQLPRLLARASELQTECMGLRKGHTLGQGLSALQSEQRLIQLLSESQGHMAHLVNSVSDILDALQRD  
 RGLGRPRNKADLQRAPARGTRPRGCATGSRPRDCLDVLLSGQDDGVYSVFPHTYPAGFQVYCDMRTDGG  
 GWTVFQRREDGSVNFVRWDAYRDGFRGLTGEHWLGLKRIHALTTQAAYELHVDLEDFENGTAARYYGSF  
 GVGLFSVDPEEDGYPLTVADYSGTAGDSLKHSGRFTTKDRSDHSENNCAAFYRGAWWYRNCHTSLNLN  
 GQYLRGAHASYADGVEWSSWTGWQYSLKFSMKIRPVREDR

TRTRPLEQKLI SEEDLAANDILDYKDDDDKV

**Chromatograms:**

[https://cdn.origene.com/chromatograms/mk6820\\_d01.zip](https://cdn.origene.com/chromatograms/mk6820_d01.zip)

**Restriction Sites:**

SgfI-MluI

**Cloning Scheme:**


**ACCN:** NM\_032843

**ORF Size:** 1383 bp

**OTI Disclaimer:** The molecular sequence of this clone aligns with the gene accession number as a point of reference only. However, individual transcript sequences of the same gene can differ through naturally occurring variations (e.g. polymorphisms), each with its own valid existence. This clone is substantially in agreement with the reference, but a complete review of all prevailing variants is recommended prior to use. [More info](#)

**OTI Annotation:** This clone was engineered to express the complete ORF with an expression tag. Expression varies depending on the nature of the gene.

**Components:** The ORF clone is ion-exchange column purified and shipped in a 2D barcoded Matrix tube containing 10ug of transfection-ready, dried plasmid DNA (reconstitute with 100 ul of water).

**Reconstitution Method:**

1. Centrifuge at 5,000xg for 5min.
2. Carefully open the tube and add 100ul of sterile water to dissolve the DNA.
3. Close the tube and incubate for 10 minutes at room temperature.
4. Briefly vortex the tube and then do a quick spin (less than 5000xg) to concentrate the liquid at the bottom.
5. Store the suspended plasmid at -20°C. The DNA is stable for at least one year from date of shipping when stored at -20°C.

**Note:** Plasmids are not sterile. For experiments where strict sterility is required, filtration with 0.22um filter is required.

**RefSeq:** [NM\\_032843.3](#), [NP\\_116232.2](#)

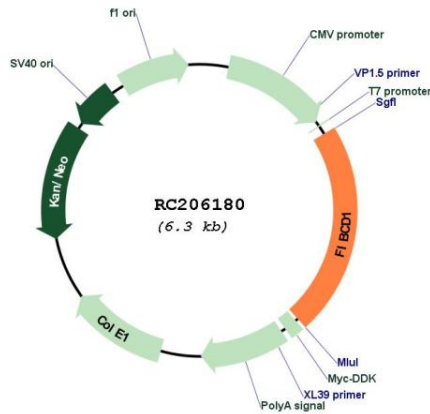
**RefSeq Size:** 3257 bp

**RefSeq ORF:** 1386 bp

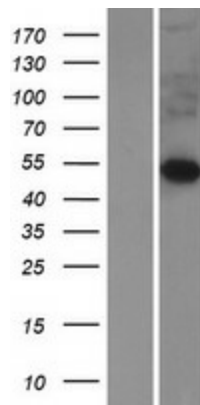
**Locus ID:** 84929

**UniProt ID:** [Q8N539](#)  
**Cytogenetics:** 9q34.12  
**Protein Families:** Druggable Genome, Transmembrane  
**MW:** 50.7 kDa  
**Gene Summary:** FIBCD1 is a conserved type II transmembrane endocytic receptor that binds chitin and is located primarily in the intestinal brush border (Schlosser et al., 2009 [PubMed 19710473]). [supplied by OMIM, Apr 2010]

### Product images:



Circular map for RC206180



Western blot validation of overexpression lysate (Cat# [LY409825]) using anti-DDK antibody (Cat# [TA50011-100]). Left: Cell lysates from untransfected HEK293T cells; Right: Cell lysates from HEK293T cells transfected with RC206180 using transfection reagent MegaTran 2.0 (Cat# [TT210002]).