

Product datasheet for **RC206175**

C1orf65 (CCDC185) (NM_152610) Human Tagged ORF Clone

Product data:

Product Type:	Expression Plasmids
Product Name:	C1orf65 (CCDC185) (NM_152610) Human Tagged ORF Clone
Tag:	Myc-DDK
Symbol:	C1orf65
Synonyms:	C1orf65
Mammalian Cell Selection:	Neomycin
Vector:	pCMV6-Entry (PS100001)
E. coli Selection:	Kanamycin (25 ug/mL)



[View online »](#)

ORF Nucleotide Sequence:

>RC206175 ORF sequence
 Red=Cloning site Blue=ORF Green=Tags(s)

TTTTGTAATACGACTCACTATAGGGCGGCCGGAATTCGTCGACTGGATCCGGTACCGAGGAGATCTGCC
 GCC**CGGATCGCC**

ATGGCAGGCTTACGCCACTTCTCCAGCCGCCCTACCGGATCTCTGGGAACCCCGCGGCCGGCGGAG
 AACGAGAGTCCACGCAGCGGCTGGGCGGCAGAGGTCGGAGCCGACTCCACCGCTGCTCCCGGCCGG
 GACTCCGGGTGCGGAGAGCGAAGCTGGGGCGTGTGGCTGCACCCGCACTGTTCTGTTACCCCGCGGCT
 CGCAGGCGCGGTGCTCAGATCACTGCGGGCAGCCGAAGCCTGAGCGATGTGGCCCGAGGCCCTGG
 AACGTTCCAGGAAGCACCGGCCCGCAGCAGGCGCTGGAAGATGCCTGGGGAGAGACAGGAACCAAGCC
 CCGCCCGGCTTGGCAGCCGACAGCCAGCTGCCACCCAGCGGCCGAGCCCTGCCCGCATTACCCTCTG
 GCCCAGGAGACTCGCCCCGCCTTCCCCGGAGGAGCTGGCACTCCCCTGAGTGGCACATTCAGGGTAG
 AAAAGGCACAGGGTGGAGACCAGTGGGCAGTGCCTCGCAGACATCTAGGTCGCTGGTCCCCTCCTC
 AGTTCCCTCGGAGCGGTCTTCTGTGCCCTCGAAAAGTCAAGAGGCACTCAGCCTCGTGTGCGCCAG
 AAGAGAGACAGCAGCGACAGGTTGAGTCAATAGCCAGCCGGACTCCCAGCCCTTGGCCTCCAGCAAAG
 AGATGCGGAGCCCGCACACCCAGGTCCTGAAGAGCAAGCTGGAAGAGGTGGTGGTCTCTCCAGGACCA
 GCAGATTTGTGCCCTGGTGTGACCCGTCTCAAGAAGGCCAGAGGATACGGGAGCTGCAGCAGCAGGCG
 GCTAAGGCCTGGGAGGAGCTGAAGCGCTCGGATCAGAAGTCCAGATGACCTGGAGCGGGAGCGCCGGC
 TGCTGTGCGGCAGAGCCAGGAGCAGTGGCAGGAGAAGGAGCAGCGCAAGACCCTCCAGAGCCCTGAGCA
 GCGCGACTGCGCGGGACAGCCAGAGGAAGAAGTGCCTCCCGGGGAAAGCCGGTGAAGGAGCAACCA
 GAGGACCAGGAGAGCCCGCGCCAGGAGAAGCTGGAGAAGCGCGCCAGGAGCAGCAGCAGCAAGCAAGT
 GCCAGGTGCGGGCCTGCTGGAGCAGGAGAAGATGCTACGGAACCTCCGGGAGCAGCAGCAGCTCGAGCT
 GCAGAGGAGGCTGGTGAAGCCTGTGCAAGAGGCACTACATGCCGTGGAGGGCCAGAAGAAGTCCAG
 GACACCAACCTGAGCTCCCTCATCAATTACCAGGCCCGGAAGTCTCATTGGACTGCCAGGCCAAGGCTG
 AGGAGCTCCTTAGGCAGCTGTCCCTGGAACAAAGTTTCCAGCGTCCCAGGAGATACACCAGGCCCTGAG
 GAAGGAGCGCAACGCGAGCTGAGGGAGAAGGCCAGAAGGAGGAAGAGCAGTTGCAGCAGGCCAGGTGG
 CGCGCAGGGGAGTCAAGGAACAGAGGAAGATGCGCAAAAGATTCTGGTGGAGCTGGCGGATGAGAAGA
 TCCGACAGGCCAGGAGTCAAGTGCACAAGACCACTAGGGACAAGGTGCAGCACCTCCGGGAGCTCAACCA
 CCTGAGGGAGAAAACCACCACATCCTGAAACTGAAAGCCGAGAAGGAGGAAAAGTGTACATTGAGGGC
 ATCAAGGAGGCCATTAAGAAAAGGAGCAGAGGGTGCAGCACATTTCCAAGGAAAAGACCCAAACTTCC
 AGGAGTTCAGAAAGCTCCCTCAGGCCTCCAGGAGAGAGGAGAGCGCCTCCAACAGCTCCCTTGATCA
 GATGTTACTAGAGGCCAGCTCCGTGCCTGTCAGCAGAACAGGGTTAC

ACGCGTACGCGGCCGCTCGAGCAGAACTCATCTCAGAAGAGGATCTGGCAGCAATGATATCCTGGATT
 ACAAGGATGACGACGATAAGGTTTAA

Protein Sequence:

>RC206175 protein sequence
 Red=Cloning site Green=Tags(s)

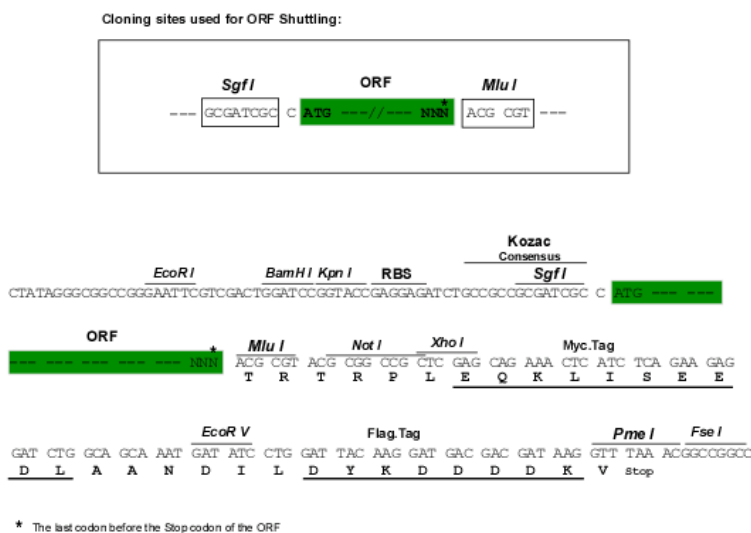
MAGFSHFSQPPYRDLWEP RP PGERESTQRLGGQRSGADSTACSRAGTPGAESEAGACWLHPHCSFTPRP
 RRRGCSDSL RGS RSLSDVARRPLERSRKHRRSRRL ED AWGETGTKPRPAWQPQTQLPPQRPQPCPHYPL
 AQGDSPPPCPGGAGTPLSGTFRVEKAQGGDQWAVPLGRHLGRWSPSSVPSERSSVPSQKFKRHSACVCAQ
 KR DSSDQVESLARSQSPLASSKEMRSPHTQVLKSKLEEVVVSSQDQI VAL V LTRLKAQR IRELQQA
 AKAW EELKRSDQKVQMTLERERLLLRSQEQWQEKEQRKTLQSPEQRDLRRDSQRKNVPPGESRWKEQP
 EDQESPRQEKLEKARAQAEHRKQCQVRRLLLEQEKMLRNLREQHSLQLQRRLVEACRKRHLHAVEGQKKVQ
 DTNLSSLIN YQARKVLMDCQAKAEELLRQLSLEQSFQRSQEIHQGLRKERQRELREKAQKEEQLQQARW
 RAGESEEQRKMRKRILVELADEKIRQARSHVHKTTTRDKVQHLRELNLREKNHHILKLAKEEKCHIEG
 IKEAIKKKEQRVQHISQGKDPNFQEFQKLPQASRRERAPPNSSLDQMVLEAQLRACQNRGY

TRTRPLEQKLISEEDLAANDILDYKDDDDKV

Chromatograms: https://cdn.origene.com/chromatograms/mk6320_b08.zip

Restriction Sites: SgfI-MluI

Cloning Scheme:



ACCN: NM_152610

ORF Size: 1869 bp

OTI Disclaimer: The molecular sequence of this clone aligns with the gene accession number as a point of reference only. However, individual transcript sequences of the same gene can differ through naturally occurring variations (e.g. polymorphisms), each with its own valid existence. This clone is substantially in agreement with the reference, but a complete review of all prevailing variants is recommended prior to use. [More info](#)

OTI Annotation: This clone was engineered to express the complete ORF with an expression tag. Expression varies depending on the nature of the gene.

Components: The ORF clone is ion-exchange column purified and shipped in a 2D barcoded Matrix tube containing 10ug of transfection-ready, dried plasmid DNA (reconstitute with 100 ul of water).

- Reconstitution Method:**
1. Centrifuge at 5,000xg for 5min.
 2. Carefully open the tube and add 100ul of sterile water to dissolve the DNA.
 3. Close the tube and incubate for 10 minutes at room temperature.
 4. Briefly vortex the tube and then do a quick spin (less than 5000xg) to concentrate the liquid at the bottom.
 5. Store the suspended plasmid at -20°C. The DNA is stable for at least one year from date of shipping when stored at -20°C.

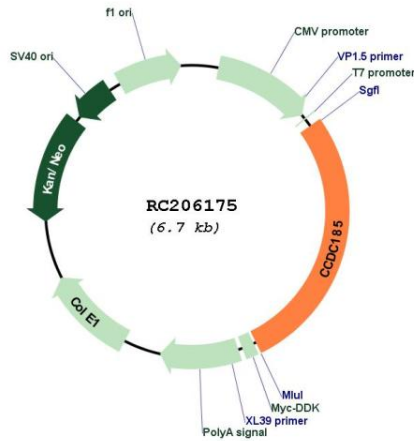
Note: Plasmids are not sterile. For experiments where strict sterility is required, filtration with 0.22um filter is required.

RefSeq: [NM_152610.1](#), [NP_689823.1](#)

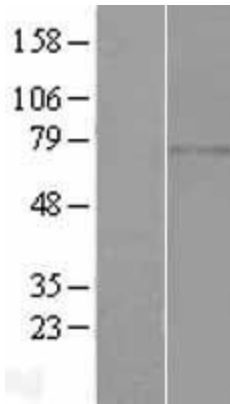
RefSeq Size: 2114 bp

RefSeq ORF: 1872 bp
 Locus ID: 164127
 UniProt ID: Q8N715
 Cytogenetics: 1q41
 MW: 72.4 kDa

Product images:



Circular map for RC206175



Western blot validation of overexpression lysate (Cat# [LY407415]) using anti-DDK antibody (Cat# [TA50011-100]). Left: Cell lysates from untransfected HEK293T cells; Right: Cell lysates from HEK293T cells transfected with RC206175 using transfection reagent MegaTran 2.0 (Cat# [TT210002]).