

Product datasheet for **RC206174**

RFXDC1 (RFX6) (NM_173560) Human Tagged ORF Clone

Product data:

Product Type:	Expression Plasmids
Product Name:	RFXDC1 (RFX6) (NM_173560) Human Tagged ORF Clone
Tag:	Myc-DDK
Symbol:	RFXDC1
Synonyms:	dj955L16.1; MTCHRS; MTFS; RFXDC1
Mammalian Cell Selection:	Neomycin
Vector:	pCMV6-Entry (PS100001)
E. coli Selection:	Kanamycin (25 ug/mL)



[View online »](#)

ORF Nucleotide Sequence:

>RC206174 ORF sequence
 Red=Cloning site Blue=ORF Green=Tags(s)

TTTTGTAATACGACTCACTATAGGGCGGCCGGGAATTCGTCGACTGGATCCGGTACCGAGGAGATCTGCC
 GCC**CGCATCGCC**

ATGGCCAAGTCCCGAAGCTGGAAGACACCTTCTGCAGGCGCAGCCTGCGCCCCAACTGTCCCCGGGGA
 TCCAGGAAGACTGCTGTGTGCAGCTCCTGGCAAGGGCTTGCTAGTCTATCCGGAAGAAACAGTGTACCT
 GGCGGCCGAAGGGCAGCCCGGGGCGAGCAGGGCGGCGGGGAGAAAGCGAAGACCCGGACTGCCGGGG
 GCAGTGAATCAGAAATGCACCTAAACAATGGTAACTTTCTCTGAAGAAGAGGACGCCGACAACCACG
 ACAGCAAACCAAGCAGCGGATCAATACCTGTCTCAGAAGAAAACCATCACGCAGATTGTGAAGGATAA
 AAAGAAGCAGACACAGCTCAGCTGCAGTGGCTTGAAGAGAATTACATTGTATGTGAAGGAGTTTGCTTA
 CCACGGTGCATTCTTTATGCACACTACTAGATTTCTGTAGGAAAGAGAAATTAGAGCCAGCCTGTGCGG
 CCACCTTTGAAAAGACAATTCGCCAGAAGTTCCCTCCTAACAAAGGCGGCTTGAACAAGAGGCCA
 TTCAAAGTATCATTACTATGGGATTGGCATCAAAGAGAGCAGTGCATATTACCACTCCGTTTATTCTGGA
 AAGGGCTTGACAAGGTTTTCTGGAAGCAAGCTAAAGAATGAGGGTGGCTTCACTCGTAAATATTCGTTA
 GCTCAAAAACCTGGAACACTTCTCCAGAATTCCTCAGCGCTCAACACCTTGATACCAAGGATGCATTTT
 TAAGGACAAGGTTGATACGCTCATAATGATGTACAAAACCTCACTGCCAGTGTATCCTGGACAATGCAATT
 AATGGAACCTTTGAAGAGATCCAGCATTTTTTATTACACTTTTGGCAAGGAATGCCTGACCATCTCCTTC
 CCCTGCTCGAAAATCCTGTTATCATTGATATTTCTGTGTTTGTGACTCAATTCTTTATAAGGTTCTTAC
 AGATGTACTATTCTGCAACAATGCAAGAAATGCCTGAAAGCTTATTAGCAGACATAAGAAATTTTGTCT
 AAAAATGGGAACAGTGGGTTGTTTCATCCTTGGAAAACCTGCCAGAAGCTCTAACTGACAAGAAAATAC
 CTATTGTGCGAAGATTTGTATCTTCTGAAACGACAAAACATTTTCTTACATCTTGCCAGATTGCCAG
 ACCAGTCTCTTTGACCAGCATGTCGTTAATTCTATGGTGTCTGATATTGAAAGGTTGATTTGAACAGC
 ATTGCTCTCAAGCCCTTCTTACCATTTTCAAGCAGCACAGACACTGAATCTGGTATCTCACTGAACATG
 ACTCTATCACTGTGTTCCAAGAAGTGAAGGATCTCCTTAAAGAAGATGCCACTGTGGAGGCTTTTATTGA
 ATGTTGGATACTGTGGTGAACAGAGATTATTAAGACCAGCAAACAAAATGGAAGGTCATTAAGAAG
 AGAGCTCAAGACTTTCTGTTAAAGTGGAGTTTTTTTGGTGTCTCGAGTAATGCATAATCTCACCTGAACA
 ATGCATCCAGTTTGGTTCTTTTCAATTTGATTGCAATGCTTCTCGATGAATACATTCTCTGGCCATGGA
 GACCCAGTTTAAATGACAAAGAGCAGGAGTTACAGAATTTATTGGACAAGTATATGAAGAATTCAGAT
 GCGAGTAAAGCTGCTTTCACTGCTTCTCGAGTTCATGCTTTCTGGCCAACCGTAATAAAGGGAGCATGG
 TTTCCAGCGACGCTGTGAAGAATGAAAGCCACGTGGAGACAACCTATCTCCCTCTGCCATCCAGTCAACC
 TGGAGGCTAGGCCCTGCTCTGCACCAGTTCCTGCTGGGAACACAGACAACATGCCGCTCACAGGTCAA
 ATGGAGCTTTACAGATTGCTGGTCACTGATGACACCACCCATTTCTCCAGCCATGGCAAGCCGAGGAA
 GTGTCAATTAACCAAGGACCAATGGCAGGGAGGCCCCCAAGTGTGGGCCAGTACTGTGAGCTCCATCACA
 CTGCTCCACATACCCAGAGCCATTTATCCCGCTCTCCCTCAAGCCAATCATGACTTTTATAGCACCAGC
 TCTAACTACCAGACTGTGTTTAGGGCACAGCCCACTCCACATCAGGACTCTATCCTCATCACACCGAGC
 ATGGTCGATGCATGGCTTGGACTGAACAGCAGCTTTCAAGAGACTTCTTCAAGTGGCAGCTGTGCGGGTCT
 TCCATATAACTCCCGCCACCGTCTAGCTATGGCCATCCCTGCAAGCCAGGATTCACACAATATGCAG
 TTTTAAATACAGGAAGCTTCAATTTCTGAGCAACACAGGAGCTGCCAGCTGCCAAGGACAACACTGC
 CTCTAATTCACCAAATGGATACTATGGAAGCAACATAAACTACCCAGAGTCTCACAGGCTCGGATCAAT
 GGTGAATCAGCACGTTTCTGTCATCAGCAGCATTGTTCACTGCCCCCTACAGTGACATCCACGATCCA
 CTTAACTTTTAGATGACAGTGGTAGAAAAACAGACCAGCTCGTTTACACAGACACATCTCCAGTTG
 CATGTCGAACTCCAGTCTAGCTTCCAGTTTGAAACCCCAATTCCTTCTCTCATCCCAATGTATGTA
 TGGAACTTCCAACAGTATCCAGCTCAAGAAACCTGGACTCCCATGGAACAAGCAGTAGAGAAATGGTG
 TCCTCTTACCACCTATCAACACTGTGTTTATGGAACAGCAGCTGGAGGCACT

ACGCGTACGCGGCCGCTCGAGCAGAAACTCATCTCAGAAGAGGATCTGGCAGCAAATGATATCCTGGATT
 ACAAGGATGACGACGATTAAGTTTAA

Protein Sequence: >RC206174 protein sequence
 Red=Cloning site Green=Tags(s)

```
MAKVPKLEDFTLQAQPAPQLSPGIQEDCCVQLLGKGLLVYPEETVYLAEGQPGGEQGGGEKGEDPELPG
AVKSEMHLNNGNFSSEEDADNHDSKTKAADQYLSQKKTITQIVKDKKKQTQLTLQWLEENYIVCEGVCL
PRCILYAHYLDFCRKEKLEPACAATFGKTIKQKFPLLTTRRLGTRGHSKYHYGGIGIKESSAYYHSVYSG
KGLTRFSGSKLKNEGGFTRKYSLSKKTGTLLEPFPSAQHLVYQGCISKDKVDTLIMYKTHCQCILDNAI
NGNFEEIQHFLHFQGMPPDHLLPLENPVIIDIFCVCDSTLYKVLTDVLIIPATMQEMPESLLADIRNFA
KNWEQWVVSLENLPEALTDKKIPVRRFVSSLKRQTSFLHLAQIARPALFDQHVNSMVSIDIERVLDNS
IGSQALLTISGSDTESGIYTEHDSITVFQELKDLLKKNATVEAFIEWLDTVVEQVRVSKQNGRSLKK
RAQDFLLKWSFFGARVMHNLTLNASSFGSFLIRMLLDEYILLAMETQFNNDKEQELQNLQDKYMKNSD
ASKAAFTASPSSCFANRNKGSMSVSSDAVKNEHVETTYLPLSSQPGGLPALHQFPAGNTDNMPLTGQ
MELSQIAGHLMTPPI SPAMASRGSVINQGMAGRPPSVGPVLSAPSHCSTYPEPIYPALPQANHDFYSTS
SNYQTVFRAQPHSTSGLYPHHTEHGRCMAWTEQQLSRDFSGSCAGSPYNSRPPSSYGPSLQAQDSHMQ
FLNTGSFNFLSNTGAASCQGATLPPNSPNGYYGSNINYPESHRLGSMVNQHVSIVSSIRSLPPYSIDHDP
LNILDDSGRKQTSSTFYTDTSPPVACRTPVLASSLQTPIPSSSSQCMYGTSNQYPAQETLDSHGTSSREMY
SSLPPINTVFMGTAAGGT
```

TRTRPLEQKLISEEDLAANDILDYKDDDDKV

Chromatograms: https://cdn.origene.com/chromatograms/mk6236_g09.zip

Restriction Sites: SgfI-MluI

Cloning Scheme:

Cloning sites used for ORF Shuttling:



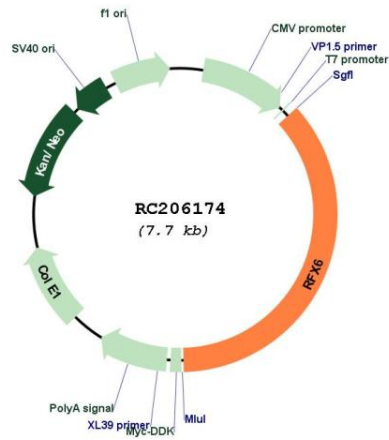
* The last codon before the Stop codon of the ORF

ACCN: NM_173560

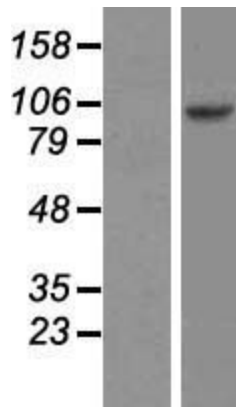
ORF Size: 2784 bp

OTI Disclaimer:	The molecular sequence of this clone aligns with the gene accession number as a point of reference only. However, individual transcript sequences of the same gene can differ through naturally occurring variations (e.g. polymorphisms), each with its own valid existence. This clone is substantially in agreement with the reference, but a complete review of all prevailing variants is recommended prior to use. More info
OTI Annotation:	This clone was engineered to express the complete ORF with an expression tag. Expression varies depending on the nature of the gene.
Components:	The ORF clone is ion-exchange column purified and shipped in a 2D barcoded Matrix tube containing 10ug of transfection-ready, dried plasmid DNA (reconstitute with 100 ul of water).
Reconstitution Method:	<ol style="list-style-type: none">1. Centrifuge at 5,000xg for 5min.2. Carefully open the tube and add 100ul of sterile water to dissolve the DNA.3. Close the tube and incubate for 10 minutes at room temperature.4. Briefly vortex the tube and then do a quick spin (less than 5000xg) to concentrate the liquid at the bottom.5. Store the suspended plasmid at -20°C. The DNA is stable for at least one year from date of shipping when stored at -20°C.
Note:	Plasmids are not sterile. For experiments where strict sterility is required, filtration with 0.22um filter is required.
RefSeq:	NM_173560.1 , NP_775831.1
RefSeq Size:	3517 bp
RefSeq ORF:	2787 bp
Locus ID:	222546
UniProt ID:	Q8HWS3
Cytogenetics:	6q22.1
Protein Families:	Transcription Factors
MW:	102.4 kDa
Gene Summary:	The nuclear protein encoded by this gene is a member of the regulatory factor X (RFX) family of transcription factors. Studies in mice suggest that this gene is specifically required for the differentiation of islet cells for the production of insulin, but not for the differentiation of pancreatic polypeptide-producing cells. It regulates the transcription factors involved in beta-cell maturation and function, thus, restricting the expression of the beta-cell differentiation and specification genes. Mutations in this gene are associated with Mitchell-Riley syndrome, which is characterized by neonatal diabetes with pancreatic hypoplasia, duodenal and jejunal atresia, and gall bladder agenesis.[provided by RefSeq, Sep 2010]

Product images:



Circular map for RC206174



Western blot validation of overexpression lysate (Cat# [LY406471]) using anti-DDK antibody (Cat# [TA50011-100]). Left: Cell lysates from untransfected HEK293T cells; Right: Cell lysates from HEK293T cells transfected with RC206174 using transfection reagent MegaTran 2.0 (Cat# [TT210002]).