

## Product datasheet for **RC206173**

### **RAB11FIP5 (NM\_015470) Human Tagged ORF Clone**

#### **Product data:**

|                           |  |
|---------------------------|--|
| Product Type:             | Expression Plasmids                          |
| Product Name:             | RAB11FIP5 (NM_015470) Human Tagged ORF Clone |
| Tag:                      | Myc-DDK                                      |
| Symbol:                   | RAB11FIP5                                    |
| Synonyms:                 | gaf-1; GAF1; pp75; rab11-FIP5; RIP11         |
| Mammalian Cell Selection: | Neomycin                                     |
| Vector:                   | pCMV6-Entry (PS100001)                       |
| E. coli Selection:        | Kanamycin (25 ug/mL)                         |



[View online »](#)

ORF Nucleotide  
Sequence:

>RC206173 representing NM\_015470  
Red=Cloning site Blue=ORF Green=Tags(s)

TTTTGTAATACGACTCACTATAGGGCGGCCGGGAATTCGTCGACTGGATCCGGTACCGAGGAGATCTGCC  
GCC**CGGATCGCC**

ATGGCCCTGGTGCGGGGCGGAGCCGGCGGGCCCTCCCGCTGGCTGCCACGCACGTCCAGGTGA  
CGGTGCTGCGGGCCCGGGCTGCGGGGAAGAGCTCGGAGCGGGCAGCACAGCGACGGTACACGGT  
GATCCAGGTGGGCGCGAGAAGTACAGTACGTCCGGTGGTGGAGAAGACGCACGGCTGTCCCGAGTGGCGT  
GAGGAGTCTCCTTCGAGCTGCCGCCGGGGCCCTGGATGGCCTGCTGCGGGCGCAGGAGGCCGACGCGG  
GCCCGGCCCTGGGCCGCGAGCTCCGCCCGCCCTGCGAGCTGGTGTCAACCACATGCACCGCTCGCT  
CATCGCGTGCACAAGTTCCTGGGCCAGGCCACGGTGGCCTGGACGAGGTCTTCGGCGCAGGCCCGGCC  
CAGCACACGCAGTGGTACAAGCTGCACTCCAAGCCAGGCAAGAAGGAGAAGGAACCGCGGAGATTGAAG  
TCACCATCCAGTTCACGCGCAACAACCTGAGCGCCATGTTTGACCTGTCCATGAAGGACAAGCCAAGGTC  
TCCCTTCAGCAAGATCAGGGACAAGATGAAGGGCAAGAAGAAGTATGATCTGGAATCTGCCTCTGCCATC  
CTCCCAAGCAGCGCCATAGAGGATCCTGACCTGGGCAGCCTGGGCAAGATGGGCAAAAGCCAAAGGCTTCT  
TCTCCGCAACAAGCTGCGCAAGTCTCCTGACCCAGTCCAACACCTCGCTGGGCTCGGACAGCACCT  
GTCCTCAGCCAGCGGGAGCTTGGCTACCAAGGACCTGGCGCCGAACCTCACCCGCTACCAAGCCGT  
AGCAGTGGCTGTCCACTGAAGGGGGCAGGGACTCTGCACAGTCCCCAAGCTGTTACCCATAAGAGGA  
CCTACAGCGATGAGGCCAACAGATGCGAGTGGCTCCTCCTCGGGCCCTTCTGGACCTTCAGGGCCACCT  
GGATGCTGCCTCCCGCTTTCGCTCTGTGTCAATGGGAGCCACATTTACAATGAGGAGCCCCAGGGCCCT  
GTGCGGCACCGCAGTCCATCTCGGGCTCGCTTCCATCCTCTGGCTCCTTGCAAGCTGTCTTCCCGGT  
TCTCCGAGGAGGGCCCTCGTCCACAGATGACACCTGGCCAGAGGCAGTCTAGCAACAGCAGCTCAGA  
GGCAGTGTGGACAGGAGGAGCTGAGTGTCTCAGGCTAAAGTCTGGCCCTGGGGCCAGCCACCTGGA  
GAGGAGGAGGGGGCCCGCTACCAGAGGGCAAGCCAGTCCAGGTTGCCACACCCATAGTGGCTCCTCTG  
AGGCTGTGGCAGAGAAGGAGGGAGCCGGAAGGAGGAACGCAAGCCCCGATGGGTCTCTTCCACCACCA  
CCACCAAGGCCTAAGTCGGAGCGAGTTGGTCCGCCAAGCTCTCTGGGGAAAAGGGGGTCCCATCCTG  
GGGGCCTCCACATCACTCATCCAGTGGGGAGGGAAAGGCCAAGAGTAGCTGGTTTGGCTTGAGAGAAG  
CCAAGGACCCGACTCAGAAACCCAGTCCCCACCCGTAAGCCCTCAGTGCCGCCCTGTGGAGGGCAG  
CCCCGACAGGAAGCAGTCCCGCTCCAGTCTGAGCATAGCCCTGAGCAGTGGGCTGGAGAAGCTCAAAACA  
GTCACATCTGGGAGCATTAGCCTGTGACCCAGGCCCCCAGGCTGGCCAGATGGTGGACACCAAAAGGC  
TGAAGGACTCAGCTGTGCTGGACCAGTCGGCCAAGTACTACAACCTGACCCACGATGAGCTCATAGCCT  
GCTCCTGCAGCGGGAGCGGGAGCTGAGCCAGCGGGACGAGCATGTGCAGGAGCTGGAGAGCTACATCGAC  
CGGCTGCTGGTGCGGATCATGGAGACCTCACCCACGCTGCTGCAGATCCCCCGGGCCCCCCCCAAA

AG**CGGACCG**ACGCGTACGCGGCCGCTCGAGCAGAACTCATCTCAGAAGAGGATCTGGCAGCAAATGATATCC  
TGGATTACAAGGATGACGACGATAAGGTTTAA

**Protein Sequence:** >RC206173 representing NM\_015470  
Red=Cloning site Green=Tags(s)

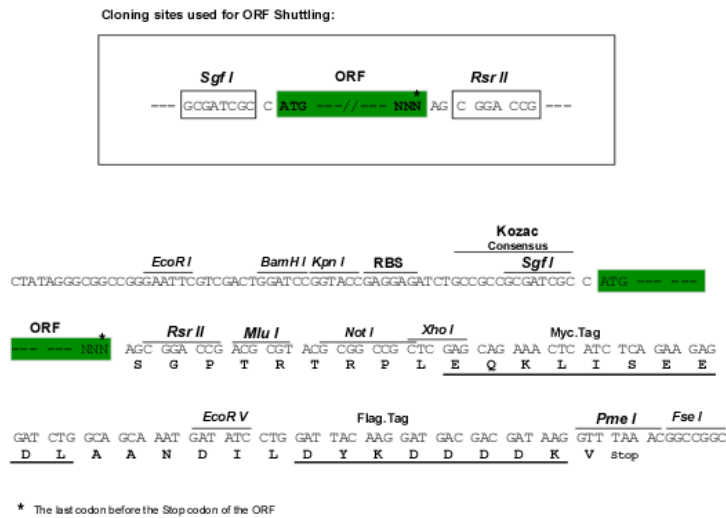
MALVRGAEPAAGPSRWLPTHVQVTVLRARGLRGKSSGAGSTSDAYTVIQVGREKYSTSVEKTHGCEPWR  
 EECSEFELPPGALDGLLRAQEADAGPAPWAASSAAACELVLTMMHRSLIGVDKFLGQATVALDEVFGAGRA  
 QHTQWYKLSKPGKKEKERGIEVTIQFTRNNLSAMFDLSMKDKPRSPFSKIRDKMKGKKKYDLESASAI  
 LPSSAIEDPDLGSLGKMGKAKGFFLRNKLKSSLTQSNTSLGSDSTLSSASGLAYQGPGAELLTRSPSR  
 SSWLSTEGGRDSAQSPKLFTHKRTYSDEANQMRVAPPRALLDLQGHLDAA SRSSL CVNGSHIYNEEPQGP  
 VRHRSSI SGSLPSSGSLQAVSSRFSEEGPRSTDDTWPRGSRSSSEAVL GQEELSAQAKVLAPGASHPG  
 EEEGARLPEGKPVQVATPIVASSEAVA EKEGARKEERKPRMGLFHHHQGLSRSELGRRSSLGEKGGPIL  
 GASPHSSSGEGKAKSSWFLREAKDPTQKPSHPVKPLSAAPVEGSPDRKQSRSSL SIALSSGLEKLT  
 VTSGSIQPVTQAPQAGQMVDTKRLKDSAVLDQSAKYNNLTHDELISLLLQRERELSQRDEHVQELESYID  
 RLLVRIMETSPTLLQIPP GPK

SGPTRRRLEQKLISEEDLAANDILDYKDDDDKV

**Chromatograms:** [https://cdn.origene.com/chromatograms/mg3889\\_e05.zip](https://cdn.origene.com/chromatograms/mg3889_e05.zip)

**Restriction Sites:** SgfI-RsrII

**Cloning Scheme:**

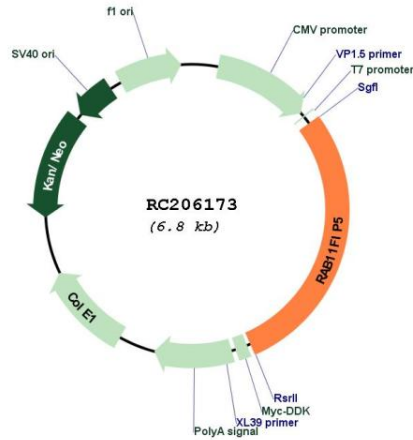


**ACCN:** NM\_015470

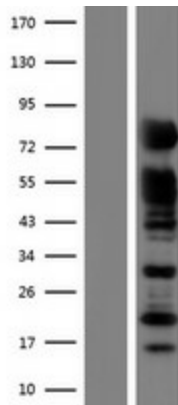
**ORF Size:** 1956 bp

|                               |  |
|-------------------------------|--|
| <b>OTI Disclaimer:</b>        | <p>Due to the inherent nature of this plasmid, standard methods to replicate additional amounts of DNA in E. coli are highly likely to result in mutations and/or rearrangements. Therefore, OriGene does not guarantee the capability to replicate this plasmid DNA. Additional amounts of DNA can be purchased from OriGene with batch-specific, full-sequence verification at a reduced cost. Please contact our customer care team at <a href="mailto:custsupport@origene.com">custsupport@origene.com</a> or by calling 301.340.3188 option 3 for pricing and delivery.</p> <p>The molecular sequence of this clone aligns with the gene accession number as a point of reference only. However, individual transcript sequences of the same gene can differ through naturally occurring variations (e.g. polymorphisms), each with its own valid existence. This clone is substantially in agreement with the reference, but a complete review of all prevailing variants is recommended prior to use. <a href="#">More info</a></p> |
| <b>OTI Annotation:</b>        | This clone was engineered to express the complete ORF with an expression tag. Expression varies depending on the nature of the gene.   |
| <b>Components:</b>            | The ORF clone is ion-exchange column purified and shipped in a 2D barcoded Matrix tube containing 10ug of transfection-ready, dried plasmid DNA (reconstitute with 100 ul of water).   |
| <b>Reconstitution Method:</b> | <ol style="list-style-type: none"> <li>1. Centrifuge at 5,000xg for 5min.</li> <li>2. Carefully open the tube and add 100ul of sterile water to dissolve the DNA.</li> <li>3. Close the tube and incubate for 10 minutes at room temperature.</li> <li>4. Briefly vortex the tube and then do a quick spin (less than 5000xg) to concentrate the liquid at the bottom.</li> <li>5. Store the suspended plasmid at -20°C. The DNA is stable for at least one year from date of shipping when stored at -20°C.</li> </ol>  |
| <b>RefSeq:</b>                | <a href="#">NM_015470.3</a>  |
| <b>RefSeq Size:</b>           | 4340 bp  |
| <b>RefSeq ORF:</b>            | 1962 bp  |
| <b>Locus ID:</b>              | 26056  |
| <b>UniProt ID:</b>            | <a href="#">Q9BXF6</a>   |
| <b>Cytogenetics:</b>          | 2p13.2   |
| <b>Protein Pathways:</b>      | Endocytosis  |
| <b>MW:</b>                    | 70.2 kDa   |
| <b>Gene Summary:</b>          | Rab effector involved in protein trafficking from apical recycling endosomes to the apical plasma membrane. Involved in insulin granule exocytosis. May regulate V-ATPase intracellular transport in response to extracellular acidosis.[UniProtKB/Swiss-Prot Function]  |

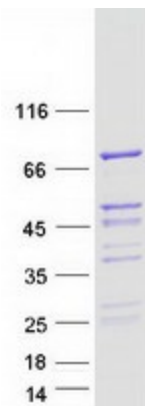
Product images:



Circular map for RC206173



Western blot validation of overexpression lysate (Cat# [LY414522]) using anti-DDK antibody (Cat# [TA50011-100]). Left: Cell lysates from untransfected HEK293T cells; Right: Cell lysates from HEK293T cells transfected with RC206173 using transfection reagent MegaTran 2.0 (Cat# [TT210002]).



Coomassie blue staining of purified RAB11FIP5 protein (Cat# [TP306173]). The protein was produced from HEK293T cells transfected with RAB11FIP5 cDNA clone (Cat# RC206173) using MegaTran 2.0 (Cat# [TT210002]).