

Product datasheet for RC206166

LYZL1 (NM_032517) Human Tagged ORF Clone

Product data:

Product Type: Expression Plasmids
Product Name: LYZL1 (NM_032517) Human Tagged ORF Clone
Tag: Myc-DDK
Symbol: LYZL1
Synonyms: bA534G20.1; KAAG648; LYC2; LYZD1; PRO1278
Vector: pCMV6-Entry (PS100001)
E. coli Selection: Kanamycin (25 ug/mL)
Cell Selection: Neomycin
ORF Nucleotide Sequence: >RC206166 ORF sequence
Red=Cloning site Blue=ORF Green=Tags(s)

TTTTGTAATACGACTCACTATAGGGCGCCGGAATTCGTCGACTGGATCCGGTACCGAGGAGATCTGCC
GCC**CGATCGCC**

ATGCAGGACGCTCCCCTGAGCTGCCTGTCACCGACTAGGTGGAGCAGTGTTCCTCCGCAGACTCAACTG
AGAAGTCAGCCTCTGGGCAGGCACCAGGAATCTGCCTTTTCAGTTCTGTCTCCGGCAGGCTTTGAGGAT
GAAGGCTCGGGCATTCTGACCCTATTGGCTGCCTGGTCACAGGCGCCGAGTCCAAAATCTACACTCGT
TGCAAATGGCAAAAATATTCTCGAGGGCTGGCCTGGACAATTACTGGGGCTTCAGCCTTGAAACTGGA
TCTGCATGGCATATTATGAGAGCGGCTACAACACCACAGCCCGACGGTCTGGATGACGGCAGCATCGA
CTATGGCATCTTCCAGATCAACAGCTTCGCGTGGTGCAGACGCGAAAGCTGAAGGAGAACAACCACTGC
CATGTCGCTGCTCAGCCTTGATCACTGATGACCTCACAGATGCAATTATCTGTGCCAGGAAAATTGTTA
AAGAGACACAAGGAATGAACTATTGGCAAGGCTGGAAGAAACATTGTGAGGGCAGAGACCTGTCCGAGTG
GAAAAAAGGCTGTGAGGTTTCC

ACGCGTACGCGGCCGCTCGAGCAGAACTCATCTCAGAAGAGGATCTGGCAGCAAATGATATCCTGGATT
ACAAGGATGACGACGATAAGGTTTAA

Protein Sequence: >RC206166 protein sequence
Red=Cloning site Green=Tags(s)

MQDAPLSCLSPTRWSSVSSADSTEKSASGAGTRNLPFQFCLRQALRMKAAGILTLIGCLVTGAESKIYTR
CKLAKIFSRAGLDNYWGFSLGNWICMAYYESGYNTTAPTVLDDGSIDYGIQINSFAWCRRGKLENNHC
HVACALITDDLTDAILCARKIVKETQGMNYWQGWKKHCEGRDLSEWKKGCEVS

TRTRPLEQKLISEEDLAANDILDYKDDDDKV

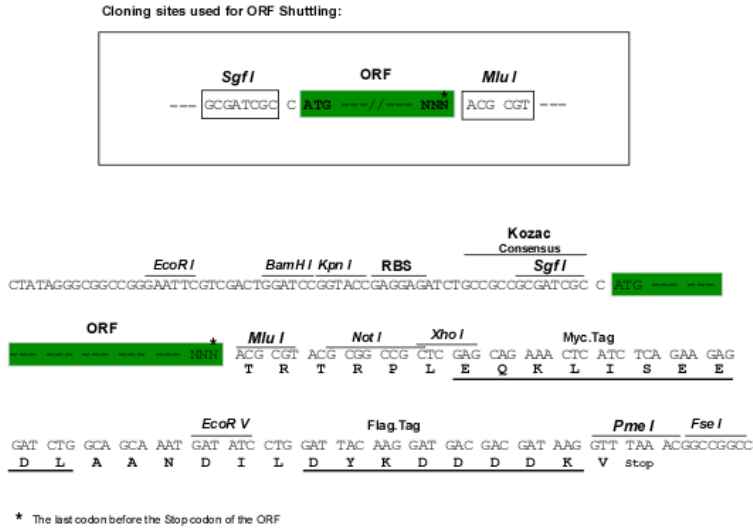
Chromatograms: https://cdn.origene.com/chromatograms/mk6072_d07.zip



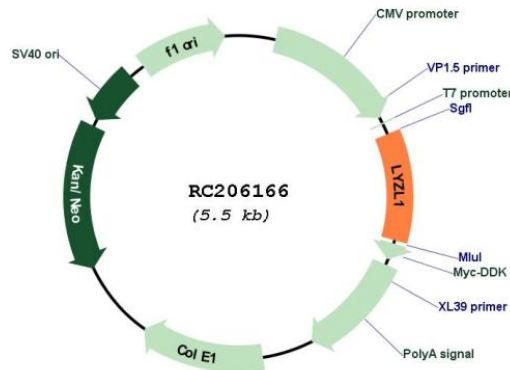
[View online »](#)

Restriction Sites: SgfI-MluI

Cloning Scheme:



Plasmid Map:



ACCN: NM_032517

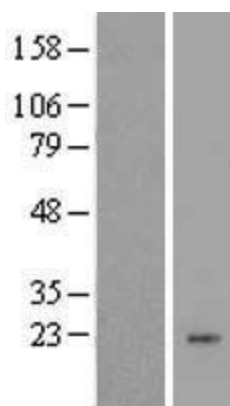
ORF Size: 582 bp

OTI Disclaimer: The molecular sequence of this clone aligns with the gene accession number as a point of reference only. However, individual transcript sequences of the same gene can differ through naturally occurring variations (e.g. polymorphisms), each with its own valid existence. This clone is substantially in agreement with the reference, but a complete review of all prevailing variants is recommended prior to use. [More info](#)

OTI Annotation: This clone was engineered to express the complete ORF with an expression tag. Expression varies depending on the nature of the gene.

RefSeq: [NM_032517.3](#)

RefSeq Size:	822 bp
RefSeq ORF:	447 bp
Locus ID:	84569
UniProt ID:	Q6UWQ5 , A0A080YUZ8
Protein Families:	Secreted Protein
MW:	21.6 kDa

Product images:

Western blot validation of overexpression lysate (Cat# [LY410048]) using anti-DDK antibody (Cat# [TA50011-100]). Left: Cell lysates from untransfected HEK293T cells; Right: Cell lysates from HEK293T cells transfected with RC206166 using transfection reagent MegaTran 2.0 (Cat# [TT210002]).