

## Product datasheet for **RC206165**

### epsilon Tubulin (TUBE1) (NM\_016262) Human Tagged ORF Clone

#### Product data:

Product Type:	Expression Plasmids
Product Name:	epsilon Tubulin (TUBE1) (NM_016262) Human Tagged ORF Clone
Tag:	Myc-DDK
Symbol:	epsilon Tubulin
Synonyms:	dj142L7.2; TUBE
Mammalian Cell Selection:	Neomycin
Vector:	pCMV6-Entry (PS100001)
E. coli Selection:	Kanamycin (25 ug/mL)



[View online »](#)

**ORF Nucleotide Sequence:**

>RC206165 ORF sequence  
 Red=Cloning site Blue=ORF Green=Tags(s)

TTTTGTAATACGACTCACTATAGGGCGGCCGGAATTCGTGACTGGATCCGGTACCGAGGAGATCTGCC  
 GCC**CGGATCGCC**

ATGACCCAGTCGGTGGTCTACAGTTCGGCCAGTCGCGAAACCAGATCGGCTGCTTCTGGACCTGG  
 CACTAAGGGAGCAGCCCGGTCAACCAGAAAGGAATTTATGATGAGGCAATAAGCAGCTCTTTAGAAA  
 TGTGGACACCAGAGTGGTTGGTGTGGTGAAGTATTTCCAAGGAAAAATATGTTCTTTAAAAGCACGA  
 GCAGTCTTGATTGATATGGAAGAAGGGTGTGAATGAAATTCGCAGGGACCACTGAGAGATGATTTG  
 ATACGAAACAGCTCATCACTGATATTTCTGGCTCAGGAAATAATTGGCCGTGGTCACAAAATTTTCGG  
 CAGTCTTTACCAAGACCAGATTTTAGAGAAATTCAGAAAGTCGGCAGAGCACTGTGATTGCTGCAGTGT  
 TTCTTTATAATACATTCCATGGGAGGAGGAACAGGATCTGGACTTGGCACATTTCTTTAAAGGTGCTTG  
 AAGACGAATCCAGAAGTATACAGATTTGTGACTTCCATTTATCCTTCTGGTGAGGATGATGCATAAC  
 CTCACCTTATAATAGCATCTTGCAATGAAGGAACTTAATGAGCATGCAGACTGTGATTGCCATTGAC  
 AATCAATCTTTATTTGACATCATTAGCAAAATCGACCTCATGGTGAATTCGAAAGTTGGGTACAACCTG  
 TGAAGCCAAAGAGTCTGGTTACTTCAAGTCTGGGGCTTTAAAAAAGCAGCATAAGAAGCCCTTTGATGC  
 AATGAATAACATTGTGGCAAATTTGCTCCTCAACCTAACGAGCTCTGCAAGATTTGAAGGGTCCCTTAAT  
 ATGGACCTTAATGAAATCAGCATGAATTTAGTTCCCTTTCTCAACTTCAATATCTCGTGTCAAGCCTAA  
 CACCTCTGTATACACTGACAGATGTTAACATTCCTCCTAGAAGATTGGATCAGATGTTTTAGATGCCTT  
 TAGTAAAGATCACCAGCTGCTTCGGGCAGACCCAAACACAGTCTTTACCTCGCCTGTGCACTCATGGTT  
 AGAGGAAATGTACAAATTCAGATCTTCGTAGAAATATTGAAAGATTAACCATCTCTACAATTTGTCT  
 CCTGGAATCAAGAAGGCTGGAAGACCAGCCTGTTCGGTACCTCCTGTGGGCCATTCTCATTTCGTTATT  
 AGCTTTAGCAAAATAACACATGTGTGAAGCCACCTTCATGGAAGTGAAGAGAGATTCATGAGGCTCTAC  
 AAGAAAAAGGCTCACCTTCATCACTATCTACAAGTTGAAGGGATGGAAGAAAGCTGTTTCACAGAAGCTG  
 TGTCACTTTATCAGCACTCATAAGGAATATGACCAACTGGACGCCACAAAAACATGCCTGTGCAGGA  
 TTTACCCAGACTAAGCATAGCTATG

**ACGCGT**ACGCGGCCGCTCGAGCAGAAACTCATCTCAGAAGAGGATCTGGCAGCAATGATATCCTGGATT  
 ACAAGGATGACGACGATAAGGTTTAA

**Protein Sequence:**

>RC206165 protein sequence  
 Red=Cloning site Green=Tags(s)

MTQSVVVQVQCGNQIGCCFWDLALREHA AVNQKGIYDEAISSFFRNVDTRVVGDGGSISKGKICSLKAR  
 AVLIDMEEGVVNEILQGPLRDVFDTKQLITDISGSGNNWAVGHKVFVGSLYQDQIILEKFRKSAEHCDC LQC  
 FFIIHSMGGGTGSGLGTFLLKVL EDEFPEVYRFVTSIYPSGEDD VITSPYNSILAMKELNEHADCVLPID  
 NQSLFDIISKIDLMVNSGKLGTTVKPKSLY TSSSGALKKQHKKPF DAMNNIVANLLLNLTSARFEGSLN  
 MDLNEISMNLVFPQLHYLVSSLTPLYTLTDVNI PPRRLDQMFSDAFSKDHQLLRADPKHSLYLACALMV  
 RGNVQISDLRRNIERLKP SLQFVSWNQEGWKTSLCSVPPVGHSHSLLALANNTCVKPTFMELKERFMRLY  
 KKKAHLLHHLQVEGMEESC FTEAVSSLSALIQEYDQLDATKNMPVQDL PRLSIAM

**TR**TRPLEQKLI SEEDLAANDILDYKDDDDKV

**Chromatograms:**

[https://cdn.origene.com/chromatograms/mk6072\\_f01.zip](https://cdn.origene.com/chromatograms/mk6072_f01.zip)

**Restriction Sites:**

Sgfl-Mlul

Cloning Scheme:



ACCN: NM\_016262

ORF Size: 1425 bp

OTI Disclaimer: The molecular sequence of this clone aligns with the gene accession number as a point of reference only. However, individual transcript sequences of the same gene can differ through naturally occurring variations (e.g. polymorphisms), each with its own valid existence. This clone is substantially in agreement with the reference, but a complete review of all prevailing variants is recommended prior to use. [More info](#)

OTI Annotation: This clone was engineered to express the complete ORF with an expression tag. Expression varies depending on the nature of the gene.

Components: The ORF clone is ion-exchange column purified and shipped in a 2D barcoded Matrix tube containing 10ug of transfection-ready, dried plasmid DNA (reconstitute with 100 ul of water).

- Reconstitution Method:
1. Centrifuge at 5,000xg for 5min.
  2. Carefully open the tube and add 100ul of sterile water to dissolve the DNA.
  3. Close the tube and incubate for 10 minutes at room temperature.
  4. Briefly vortex the tube and then do a quick spin (less than 5000xg) to concentrate the liquid at the bottom.
  5. Store the suspended plasmid at -20°C. The DNA is stable for at least one year from date of shipping when stored at -20°C.

Note: Plasmids are not sterile. For experiments where strict sterility is required, filtration with 0.22um filter is required.

RefSeq: [NM\\_016262.5](#)

RefSeq Size: 2314 bp

RefSeq ORF: 1428 bp

Locus ID: 51175

UniProt ID: [Q9UJT0](#)

Cytogenetics: 6q21

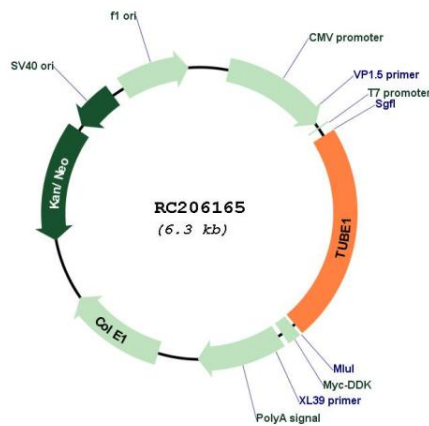
Domains: tubulin

Protein Families: Druggable Genome

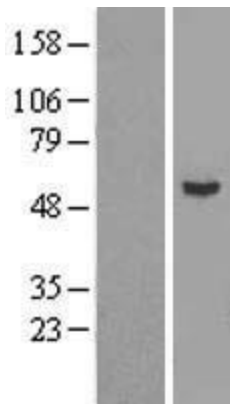
MW: 52.9 kDa

Gene Summary: This gene encodes a member of the tubulin superfamily. This protein localizes to the centriolar sub-distal appendages that are associated with the older of the two centrioles after centrosome duplication. This protein plays a central role in organization of the microtubules during centriole duplication. A pseudogene of this gene is found on chromosome 5.[provided by RefSeq, Jan 2009]

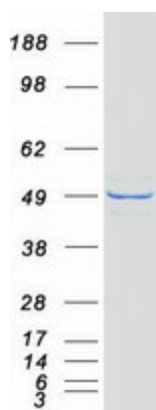
**Product images:**



Circular map for RC206165



Western blot validation of overexpression lysate (Cat# [LY414101]) using anti-DDK antibody (Cat# [TA50011-100]). Left: Cell lysates from untransfected HEK293T cells; Right: Cell lysates from HEK293T cells transfected with RC206165 using transfection reagent MegaTran 2.0 (Cat# [TT210002]).



Coomassie blue staining of purified TUBE1 protein (Cat# [TP306165]). The protein was produced from HEK293T cells transfected with TUBE1 cDNA clone (Cat# RC206165) using MegaTran 2.0 (Cat# [TT210002]).