

## Product datasheet for RC206160

### DIRAS1 (NM\_145173) Human Tagged ORF Clone

#### Product data:

**Product Type:** Expression Plasmids  
**Product Name:** DIRAS1 (NM\_145173) Human Tagged ORF Clone  
**Tag:** Myc-DDK  
**Symbol:** DIRAS1  
**Synonyms:** Di-Ras1; GBTS1; RIG  
**Mammalian Cell Selection:** Neomycin  
**Vector:** pCMV6-Entry (PS100001)  
**E. coli Selection:** Kanamycin (25 ug/mL)  
**ORF Nucleotide Sequence:** >RC206160 ORF sequence  
 Red=Cloning site Blue=ORF Green=Tags(s)

TTTTGTAATACGACTCACTATAGGGCGGCCGGAATTCGTCGACTGGATCCGGTACCGAGGAGATCTGCC  
 GCCCGCATCGCC

ATGCCGGAACAGAGTAACGATTACCGCTGGTGGTGTTCGGGGCGGGCGGCTGGGCAAGAGCTCGCTGG  
 TGCTGCGCTTCGTGAAGGGCACGTTCCGCGACACCTACATCCCCACCATCGAGGACACCTACCGGCAGGT  
 GATCAGCTGCGACAAGAGCGTGTGCACGCTGCAGATCACAGACACCACCGGCAGCCACAGTTCCCGGCC  
 ATGCAGCGCTGCCATCTCAAGGGCCACGCCTTCATCCTGGTGTTCCTCGTCACCAGCAAGCAGTCCG  
 TGGAGGAGCTGGGGCCCATCTACAAGCTCATCGTGCAGATCAAGGGCAGCGTGGAGGACATCCCCGTGAT  
 GCTCGTGGCAACAAGTGCATGAGACGACGCGGAGGTGGACACGCGCGAGGCGCAGGCGGTGGCCAG  
 GAGTGGAAAGTGCCTTTCATGGAGACCTCGGCCAAGATGAACTACAACGTCAAGGAGCTTTCAGGAGC  
 TGCTGACGCTGGAGACGCGCCGGAACATGAGCCTCAACATCGACGGCAAGCGCTCCGGGAAGCAGAAGAG  
 GACAGACCGCGTCAAGGGCAAATGCACCCTCATG

ACGCGTACGCGGCCGCTCGAGCAGAACTCATCTCAGAAGAGGATCTGGCAGCAAATGATATCCTGGATT  
 ACAAGGATGACGACGATAAGGTTTAA

**Protein Sequence:** >RC206160 protein sequence  
 Red=Cloning site Green=Tags(s)

MPEQSNDRVVVFGAGGVGKSSLVLRVFKGTFRDYIPTIEDTYRQVISCDKSVCTLQITDTTGSHQFPA  
 MQRLSISKGHAFILVFSVTSKQSLLEELGPIYKLIQIKGSVEDIPVMLVGNKCDETQREVDTREAQAVAQ  
 EWKCAFMETSAKMNYNVKELFQELLTLETRRNMSLNIDGKRSGKQKRTDRVKGKCTLM

TRTRPLEQKLISEEDLAANDILDYKDDDDKV



[View online »](#)

**Chromatograms:** [https://cdn.origene.com/chromatograms/mk6317\\_e10.zip](https://cdn.origene.com/chromatograms/mk6317_e10.zip)

**Restriction Sites:** SgfI-MluI

**Cloning Scheme:**



**ACCN:** NM\_145173

**ORF Size:** 594 bp

**OTI Disclaimer:** The molecular sequence of this clone aligns with the gene accession number as a point of reference only. However, individual transcript sequences of the same gene can differ through naturally occurring variations (e.g. polymorphisms), each with its own valid existence. This clone is substantially in agreement with the reference, but a complete review of all prevailing variants is recommended prior to use. [More info](#)

**OTI Annotation:** This clone was engineered to express the complete ORF with an expression tag. Expression varies depending on the nature of the gene.

**Components:** The ORF clone is ion-exchange column purified and shipped in a 2D barcoded Matrix tube containing 10ug of transfection-ready, dried plasmid DNA (reconstitute with 100 ul of water).

**Reconstitution Method:**

1. Centrifuge at 5,000xg for 5min.
2. Carefully open the tube and add 100ul of sterile water to dissolve the DNA.
3. Close the tube and incubate for 10 minutes at room temperature.
4. Briefly vortex the tube and then do a quick spin (less than 5000xg) to concentrate the liquid at the bottom.
5. Store the suspended plasmid at -20°C. The DNA is stable for at least one year from date of shipping when stored at -20°C.

**RefSeq:** [NM\\_145173.4](#)

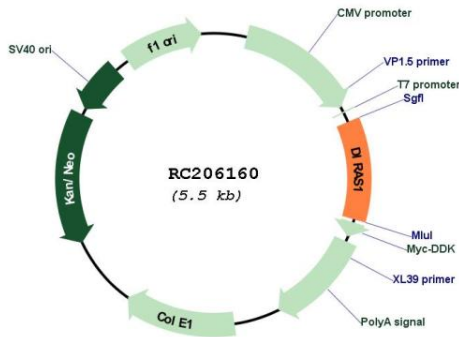
**RefSeq Size:** 3412 bp

**RefSeq ORF:** 597 bp

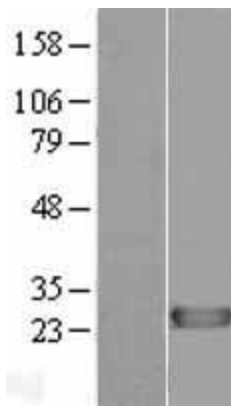
**Locus ID:** 148252

**UniProt ID:** [O95057](#)  
**Cytogenetics:** 19p13.3  
**Domains:** ras, RAS, RHO, RAB  
**MW:** 22.3 kDa  
**Gene Summary:** DIRAS1 belongs to a distinct branch of the functionally diverse Ras (see HRAS; MIM 190020) superfamily of monomeric GTPases.[supplied by OMIM, Apr 2004]

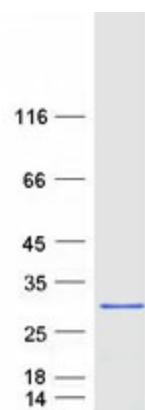
**Product images:**



Circular map for RC206160



Western blot validation of overexpression lysate (Cat# [LY408035]) using anti-DDK antibody (Cat# [TA50011-100]). Left: Cell lysates from untransfected HEK293T cells; Right: Cell lysates from HEK293T cells transfected with RC206160 using transfection reagent MegaTran 2.0 (Cat# [TT210002]).



Coomassie blue staining of purified DIRAS1 protein (Cat# [TP306160]). The protein was produced from HEK293T cells transfected with DIRAS1 cDNA clone (Cat# RC206160) using MegaTran 2.0 (Cat# [TT210002]).