

Product datasheet for **RC206156**

CCDC146 (NM_020879) Human Tagged ORF Clone

Product data:

Product Type:	Expression Plasmids
Product Name:	CCDC146 (NM_020879) Human Tagged ORF Clone
Tag:	Myc-DDK
Symbol:	CCDC146
Synonyms:	MBO2
Mammalian Cell Selection:	Neomycin
Vector:	pCMV6-Entry (PS100001)
E. coli Selection:	Kanamycin (25 ug/mL)



[View online »](#)

**ORF Nucleotide
Sequence:**

>RC206156 ORF sequence
 Red=Cloning site Blue=ORF Green=Tags(s)

TTTTGTAATACGACTCACTATAGGGCGGCCGGAATTCGTCGACTGGATCCGGTACCGAGGAGATCTGCC
 GCC**CGCATCGCC**

ATGGAAGACAGTAGCACAGACAGAAAAAGAAGAGGAAGAGGAGAAAGATGAAAAGGATCAAGAGCCCA
 TTTATGCCATAGTGCCCAATTAACATTCAAGATGAGCGGTTTGTGATTTATCTGAAACTCCAGCTTT
 CATTCTTCTGCATGAGTTACATGCTATGGGAAAACCTCCTGGAACCAAGATGGCAGCGTTAAAAGCCAAG
 TATACCTTGTGCATGACGCCGTGATGAGCACACAAGAGTCAGAGGTCCAAGTGTACAGAATGCCAAAC
 GTTCTACTGAGCAAAATACAACAGCAGCAGTTTACCTGCAGCAAGCTGATAATTTCCAGAAGCATTCTC
 CACGGAGGTCTCCAAAATGAGAGAACAACCTTCTCAAGTATCAAAATGAATATAATGCAGTGAAGGAAAGA
 GAGTTCATAATCAGTACAGATTAATAGCTTAAAGGAAGAAAAATCATCATAGTAAAAGAATTTGAGA
 AGATAACAAAGCCAGGAGAAATGGAGAAGAAGATGAAAAATTGAGAGAAAGCACTGAAGAATTACGTAA
 AGAAAATATGCAGAAGAAATTAGAAATTAATAATTTACGAGAAGATTTGGCATCTAAACAAAAGCAGTTA
 TAAAAAGAGCAGAAGGAAGTCTAGAAAGATTTGGGACATCAGGTCGTCTAAAGGATGAAGTGGCCACC
 ATCAAACCAATTCAGTACAAATTTGAAAAGAGATGAAAAAATAACACGCAAAAAAGTAGAAATGAAAA
 GAAAAAATTGCTTGAACAAGAAGTCAAAACGCTAAATGACTCCCTAAAGAAAGTTGAAAAAAGGTT
 AGTGCTATAGTGGATGAGAAGGAAAAATGTAATAAAGGAAGTTGAAGGCAAAACGAGCCTTACTTGAATCA
 AAGAACGAGAACATAACCAATTTGGTCAAGCTATTGGAATTAGCCAGAGAGAATGAAGCAACTTCATTAAC
 TGAAAGAGGGATCTTGGATCTCAATTTACGCAACAGTCTCATTGACAAGCAGAATACCATGATGAACCT
 TCTCGTAAGCAAAAGAGAGAAAAGAACGAGATTTTCGAAATTAAGAAAGATGGAAGTGTCTTGAAGTGT
 CCTGGGATGCACCTTAGGCAAACTCAAGCACTGCATCAAAGGCTTCTATTAGAGATGGAAGTATCCCCAA
 AGATGATTCTACATTATCTGAGAGAAGGCGAGAGCTTCAAGGAAGTTGAAGTAGCTAAGAGGAATTTG
 GCCAACAGAAAATTATATCAGAAATGGAGTCTAAGTTAGTAGAACAACAACCTTGCAAGAAAAACAAGC
 TTTTAAAGGAGCAAGAAAACATGAAAGAGCTAGTAGTCAACCTTCTCCGCATGACTCAAATCAAATTTGA
 TGAAGGAAACAAAAGTCCAAGGATTTCTGAAAGCTCAGCAAAAATACACCAACATTGTTAAAGAAATG
 AAAGCAAAGGATCTTGAATCAGGATACACAAGAAGAAAAATGTGAAATTTATCGGAGACTGAGAGAGT
 TTGCTAAACTGTATGACACCATTGAAATGAAAGAAACAATTTGTTAACTTACTCCACAAAGCTCATCA
 GAAAGTAAATGAAATAAAAGAAAGCATAAAATGTCATTAATGAACTTGAATTTCTGAGAAATAGTGCC
 GTTAGTCAAGAAAGAAAGCTACAAAATTCATGCTGAAACACGCCAACAAATGTTACCATCAGAGAGAGCA
 TGCAAAAACGATGTGCGCAAAATTTGATCAAAACTTCAGGAAATGAAAGAAAAGGAAGGCCAGTTAAA
 TAACATTGACAGACTTGCCAACAGCATCAATGATCGAAGAGGAGATGGTGCAGCTTCGCAAAAGATAC
 GAAAAAGCTGTTGAGCATCGAAATGAAAGTGGCGTTTACGCTGATAGAGCGGGAAGAAGAAATATGCATTT
 TTTATGAAAAAATAAATATCCAAGAGAAGATGAACTAAATGGAGAAATGAAATACATCTACTGGAAGA
 AAAGATCCAATTCCTGAAATGAAGATTGCTGAGAAGCAAGACAAAATTTGTGTGACCCAGAAATTAAGT
 CCAGCCAAAGAGTCCCTGGATGCCGACCTAGCTGTGCTCCAAATTCAGTTTTACAGTGTACAGACAGAA
 TTAAGACCTGGAGAAACAGTTTCGTAAGCCTGATGGTGAAGATAGAGCTCGCTTCTCCAGGGAAAGA
 TCTGACCGAAAAAGAAATGATCCAAAAATTAGACAAGCTGGAACACAACTGGCCAAGAAGGAGGAGAAG
 CTGCTGGAGAAGGATTTATCTATGAGCAAGTCTCCAGGCTCACAGACAGGCTCTGAGCAAAAACCTCAGG
 GCTGCAAGCAGGACACACTGCTCTTAGCCAAGAAGATGAATGGCTATCAAAGAAGGATCAAAAATGCAAC
 TGAGAAAATGATGGCTCTTGTGCTGAGCTGTCCATGAAACAAGCCCTAACCATTTGAACTCCAAAAGGAA
 GTCAGGGAGAAAGAAGACTTCATCTTCACTTGCAATTCAGGATAGAAAAAGGTCTGCCACTCAATAAGG
 AAATTGAGAAAGAATGGTTGAAAGTCTTCGAGATGAAGAAATGCATGCCTTGGCCATCGCTGAAAAAGTC
 TCAGGAGTTCTTGAAGCAGATAATCGCCAGCTGCCAATGGTGTTCACAACTGCAGAGCAGCGTCCG
 AATGCCTACATCCAGAAGCAGATGCCACTCTTCTTTGCCAAAACCTTATGGTGTCTTGGCTCCTTTTA
 AACCCAGTGAACCTGGAGCCAATATGAGGCACATAAGGAAACCTGTTATAAGCCAGTTGAAATC

ACGCGTACGCGGCCGCTCGAGCAGAACTCATCTCAGAAGAGGATCTGGCAGCAAATGATATCCTGGATT
 ACAAGGATGACGACGATAAGGTTTAA

Protein Sequence: >RC206156 protein sequence
 Red=Cloning site Green=Tags(s)

```

MEDSSTDTEKEEEEEKDEKDQPEIYAIIVPTINIQDERFVDLSETPAFIFLHELHAMGKLPGTRMAALKAK
YTL LHDVAVMSTQSEVQLLNQAKRFTEQIQQQFHLQQADNFPEAFSTEVSVMREQLLKYQNEYNAVKER
EFHNQYRLNSLKEEKIIVKEFEKITKPGEMEKMKILRESTEELRKEIMQKKLEIKNLREDLASKQKQL
LKEQKLELELLGHQVVLKDEVAHHQTIPVQIGKEIEKITRKKVEMEKKIIVLQQEVKTLNDSLKKVENKV
SAIVDEKENVIKEVEGKRALLEIKEREHNLVKLLELARENEATSLTERGILDNLNLSLIDKQNYHDEL
SRKQREKERDFRNLKRMELLLKVSWDALRQTQALHQRLLEMEAIIPKDDSTLSERRRELHKEVEVAKRNL
AQQKIISEMESKLVEQQLAEENKLLKEQENMKELVNNLLRMTQIKIDEKEQKSKDFLKAQKQYTNIVKEM
KAKDLEIRIHKKKCEIYRRLREFAKLYDTRNERNKFNLLHKAHQKVNEIKERHKMSLNELEILRNSA
VSQERKLQNSMLKHANNVTIRESMNDVRKIVSKLQEMKEKKAQLNNDRLANTITMIEEEMVQLRKRY
EKAVQHRNESGVQLIEREEICIFYEKINIQEKMKLNGEIEIHLLEEKIQFLKMKIAEKQRQICVTQKLL
PAKRSLDADLAVLQIQFSQCTDRIKDLKQFVKPDGENRARFLPGKDLTEKEMIQKLDKLELQLAKKEEK
LLEKDFIYEQVSRLDRLCSKTQGCQDTELLAKKMNGYQRRIKNATEKMMALVAELSMKQALTIELQKE
VREKEDFIFTCNSRIEGLPLNKEIEKEWLKVLRDEEMHALAIAEKSQEFLEADNRQLPNGVYTTAEQRP
NAYIPEADATLPLPKPYGALAPFKPSEPGANMRHIRKPVIKPVEI
  
```

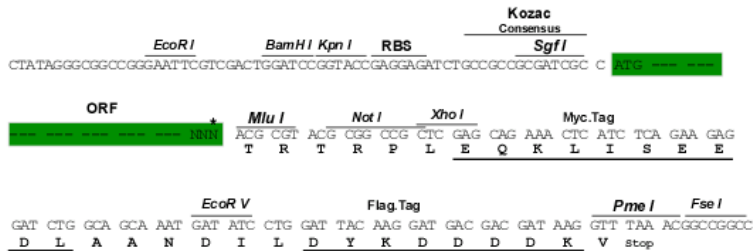
TRTRPLEQKLISEEDLAANDILDYKDDDDKV

Chromatograms: https://cdn.origene.com/chromatograms/mk6533_h05.zip

Restriction Sites: SgfI-MluI

Cloning Scheme:

Cloning sites used for ORF Shuttling:



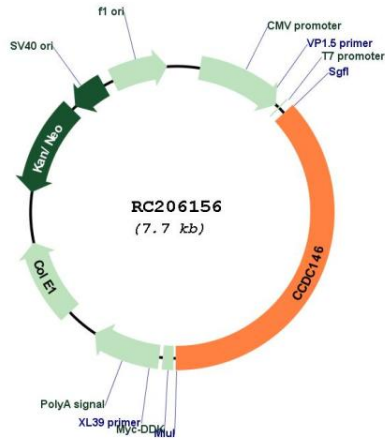
* The last codon before the Stop codon of the ORF

ACCN: NM_020879

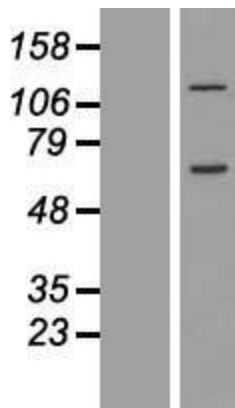
ORF Size: 2865 bp

OTI Disclaimer:	The molecular sequence of this clone aligns with the gene accession number as a point of reference only. However, individual transcript sequences of the same gene can differ through naturally occurring variations (e.g. polymorphisms), each with its own valid existence. This clone is substantially in agreement with the reference, but a complete review of all prevailing variants is recommended prior to use. More info
OTI Annotation:	This clone was engineered to express the complete ORF with an expression tag. Expression varies depending on the nature of the gene.
Components:	The ORF clone is ion-exchange column purified and shipped in a 2D barcoded Matrix tube containing 10ug of transfection-ready, dried plasmid DNA (reconstitute with 100 ul of water).
Reconstitution Method:	<ol style="list-style-type: none"> 1. Centrifuge at 5,000xg for 5min. 2. Carefully open the tube and add 100ul of sterile water to dissolve the DNA. 3. Close the tube and incubate for 10 minutes at room temperature. 4. Briefly vortex the tube and then do a quick spin (less than 5000xg) to concentrate the liquid at the bottom. 5. Store the suspended plasmid at -20°C. The DNA is stable for at least one year from date of shipping when stored at -20°C.
Note:	Plasmids are not sterile. For experiments where strict sterility is required, filtration with 0.22um filter is required.
RefSeq:	NM_020879.1
RefSeq Size:	3333 bp
RefSeq ORF:	2868 bp
Locus ID:	57639
UniProt ID:	Q8IYE0
Cytogenetics:	7q11.23
MW:	112.8 kDa

Product images:



Circular map for RC206156



Western blot validation of overexpression lysate (Cat# [LY412242]) using anti-DDK antibody (Cat# [TA50011-100]). Left: Cell lysates from untransfected HEK293T cells; Right: Cell lysates from HEK293T cells transfected with RC206156 using transfection reagent MegaTran 2.0 (Cat# [TT210002]).