

## Product datasheet for RC206155

### CCDC117 (NM\_173510) Human Tagged ORF Clone

#### Product data:

Product Type:	Expression Plasmids
Product Name:	CCDC117 (NM_173510) Human Tagged ORF Clone
Tag:	Myc-DDK
Symbol:	CCDC117
Synonyms:	dj366L4.1
Vector:	pCMV6-Entry (PS100001)
E. coli Selection:	Kanamycin (25 ug/mL)
Cell Selection:	Neomycin
ORF Nucleotide Sequence:	>RC206155 ORF sequence Red=Cloning site Blue=ORF Green=Tags(s)

TTTTGTAATACGACTCACTATAGGGCGGCCGGAATTCGTCGACTGGATCCGGTACCGAGGAGATCTGCC  
GCC**CGGATCGCC**

ATGGCTGCGCTCGGCCGGCCCTTCAGCGGCCTCCCTCTGAGCGGGCGCTCGGACTTCTGCAGCCGGCCG  
AGCCGGCCTTCCCGGCCGGGCCTTCCCGCCGGGGCTGACGGCGCCGAGTTGGCCCCGGCGCCGGGACC  
TCGCGCAGTCCCTAGCAGTCCCCTGGGAGTGC GGCGCGCGGACGTGTTTCTGTTCACTGTAAAAAGAAA  
CACAAGCGAGAGGAGGAGGAGGATGATGATTGTCCAGTAAGAAAGAAAAGGATAACTGAAGCAGAGCTCT  
GTGCTGGTCTAATGACTGGATTCTTTGTGCACATCAGGATGTAGAGGGGCATGGAGTAAATCCCAGTGT  
TAGTGGCCTTTCCATACCTGGGATATTAGATGTTATTTGTGAAGAAATGGATCAGACAACCTGGAGAACCA  
CAGTGTGAAGTTGCCGAAGGAAGCTTCAGGAGATTGAGGACAGGATAATTGATGAAGATGAAGAAGTTG  
AAGCTGACAGAAATGTTAACCATCTCCCAGTCTTGTCCTTTCTGATACCATGAAAACAGGTTTGAAGAG  
GGAATTTGATGAGGTTTTTACAAAGAAAATGATTGAGTCTATGAGCCGTCCTTCCATGGAGCTTGTCTC  
TGGAAACCCCTCCCTGAACCTCTTTCTGATAAGCCAAAGCCATCCTCTAATACTAAGAACTATACAGGAG  
AGAGCCAAGCTAAGCATGTAGCTGGCACTGCCTTCCCTCAGAGAAGTGAAGTGTTCGGAACCTCG  
GCCAACAGGGATGTCTTTATAATAGTTTGGAGACAGCTACTAGCACAGAAGAAGAGATGGAATC

**ACGCGT**ACGCGGCCGCTCGAGCAGAAACTCATCTCAGAAGAGGATCTGGCAGCAATGATATCCTGGATT  
ACAAGGATGACGACGATAAGGTTTAA



[View online »](#)

Protein Sequence: >RC206155 protein sequence  
 Red=Cloning site Green=Tags(s)

MAALGRPFSGPLPLSGGSDFLQPPQPAFPGRAPPPGADGAELAPRPGRAVPSPAGSAARGRVSVHCKKK  
 HKREEEEDDDCPVRKKRITAEALCAGPNDWILCAHQDVEGHGVNPSVSGLSIPGILDVICEEMDQTTGEP  
 QCEVARRKLEIEDRIIDEDEEVEADRNVNHLPSLVLSDTMKTGLKREFDEVFTKKMIESMSRPSMELVL  
 WKPLPELLSDKPKPSSNTKNYTGESQAKHVAAGTAFPQRTLELSEPRPTGMSLYNSLETATSTEEEMEL

TRTRPLEQKLISEEDLAANDILDYKDDDDKV

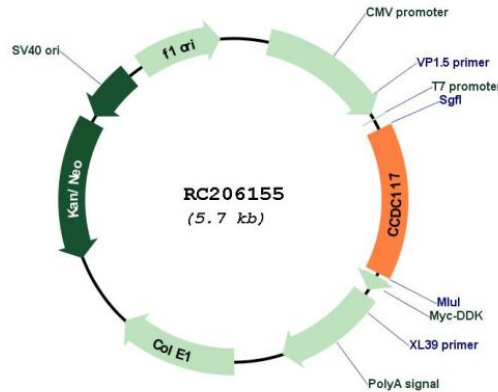
Chromatograms: [https://cdn.origene.com/chromatograms/mk6341\\_b12.zip](https://cdn.origene.com/chromatograms/mk6341_b12.zip)

Restriction Sites: SgfI-MluI

Cloning Scheme:

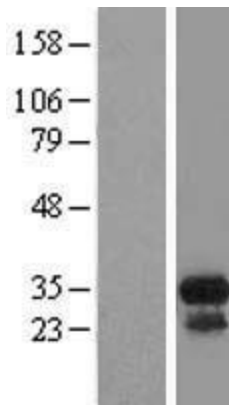


Plasmid Map:

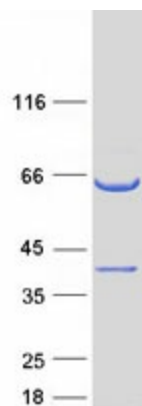


ACCN: NM\_173510

<b>ORF Size:</b>	837 bp
<b>OTI Disclaimer:</b>	The molecular sequence of this clone aligns with the gene accession number as a point of reference only. However, individual transcript sequences of the same gene can differ through naturally occurring variations (e.g. polymorphisms), each with its own valid existence. This clone is substantially in agreement with the reference, but a complete review of all prevailing variants is recommended prior to use. <a href="#">More info</a>
<b>OTI Annotation:</b>	This clone was engineered to express the complete ORF with an expression tag. Expression varies depending on the nature of the gene.
<b>RefSeq:</b>	<a href="#">NM_173510.1</a> , <a href="#">NP_775781.1</a>
<b>RefSeq Size:</b>	3991 bp
<b>RefSeq ORF:</b>	840 bp
<b>Locus ID:</b>	150275
<b>UniProt ID:</b>	<a href="#">Q8IWD4</a> , <a href="#">A0A024R1C5</a>
<b>MW:</b>	30.5 kDa

**Product images:**


Western blot validation of overexpression lysate (Cat# [LY406590]) using anti-DDK antibody (Cat# [TA50011-100]). Left: Cell lysates from untransfected HEK293T cells; Right: Cell lysates from HEK293T cells transfected with RC206155 using transfection reagent MegaTran 2.0 (Cat# [TT210002]).



Coomassie blue staining of purified CCDC117 protein (Cat# [TP306155]). The protein was produced from HEK293T cells transfected with CCDC117 cDNA clone (Cat# RC206155) using MegaTran 2.0 (Cat# [TT210002]).