

## Product datasheet for **RC206154**

### MFSD6L (NM\_152599) Human Tagged ORF Clone

#### Product data:

Product Type:	Expression Plasmids
Product Name:	MFSD6L (NM_152599) Human Tagged ORF Clone
Tag:	Myc-DDK
Symbol:	MFSD6L
Mammalian Cell Selection:	Neomycin
Vector:	pCMV6-Entry (PS100001)
E. coli Selection:	Kanamycin (25 ug/mL)



[View online »](#)

**ORF Nucleotide Sequence:**

>RC206154 ORF sequence  
 Red=Cloning site Blue=ORF Green=Tags(s)

TTTTGTAATACGACTCACTATAGGGCGGCCGGGAATTCGTCGACTGGATCCGGTACCGAGGAGATCTGCC  
 GCC**CGGATCGCC**

ATGAGTGCCAACCCCGGTGGGACATCAGCAGGGCGCTGGGGGTGGCCAAGCTCTCCACCTGGTGTGCG  
 GGGTGC GGGAAGCTGCGTGACCCGTTCTGACCCTTTACCTGAGGCAGCTGGGCTTGGCCGCGCCCTG  
 GGTGGGCACCCTAATGGGAACCAAGCACCTAATCGCTGCCTTCTGGGCTCCCGTCTGTGCCTTCTGGCC  
 AAAAGCTACCGGAAAAGGAGAGCGCTTCTGATCGGCTCCCTGCTCGGCTCGGTGGGGGCCAGCCTGCTGA  
 TGGTCTGGTCCCACCGGTAGACAAAAATCGGGTGCACTTCCCTTGAATGGAAGCAGCGGCCTGACCAG  
 CACAGACGCACTCCCGGGGTACGCTACCTGTGAACATCACCTCGGCCAAGAGTCTGCCTCCAGCCAC  
 CCAGCCAAGAGGACTGCAGAGGTGGAATGCCTGGCTTCAAAAACCCACCTGGTAAAGTGACCGAGAAA  
 CTTTCCGTGATCTGCACGTCTACTTAGCGCCCTCCGTTGAAGGAGCTAGGACCACATCCCAAGCTCTCT  
 CCATCCTGTCACCTCGGGCTGAAAGATCATCCCTGGGAAGTTACTTTTGAGGTGGTCAAGACAGCCCTC  
 CCCTTGCTTACTGGGGGAAAGGGCCCGGGAATCCAGCCAATTTGTCAGGGACCAAGGGGAAAGCCTGGG  
 CTTTTGACCTGTCTTGGAGGCGTTGCGGCGGACTTTTATCCTCTCCTTGGGGTCCGTGGCGTTCTGGGA  
 GCTGCTGACAGCGCCTCTGGAGCAGGTGGCAGATGACAGCCTTTATGAGTTCCTGGATTTTGTGGATGCC  
 ACTGACCGATACAGAAGCCTGTGGGTCTGGAGGTTGCTGGGCAATGTCGGCAGGCGTGTGTGGCATCACAG  
 CTTTGGTGGGGCAGCTGGACTGCTTCTGATGACCAGTGGCCCCGAGGTGTGGTCCACTTCTATGGGTA  
 CTCGGTGGTCAGCACCTGGCCTTACTGGTGAGCATTGCCTTTCCATTCCCATCTGTGACAGTGGGAG  
 CCCAGCTACAAAAGGGTCAAAGCACTGTCCATTGTGGGGGTGACCCCCACCTATTCTCCTCGCCTCCA  
 CCACTGTTTTGGTAGGACCATCGTCAGTACTGTCCAGAACTTTCTGTTCTGGCACATGAAGGACCATGG  
 GAGCGGGCAGCTGGTCATGGGTTTTCTCGGTCCGCTCAGCTTGGTGGGGAAATTCGTTTCATCGTTTC  
 AAAGCTACATTGCTTAGGAACTGTCCAGGACGGGCTGGTGGGGCTGGGGCTGAGCTGCCTCGCTGGGC  
 AGCTGCTGTACTACTCTTCTCTGAGGCTGGTGGTCCGTCTCCCATTCAGATCTTGAAGTCCATTAG  
 CAACAGAGCTTTGTGGTGGGCTGTGGGGCCTCAGTAGAGGACCTGGCCACTCCCCGCATGGAGAGGGCT  
 CTGAGTGCCTTGTCCGAGGCCACTTTACGGGAGTGGCTGTAGCCTGGGAGCTTTGTGGGGGCTTCCG  
 TGGTGTGCGCTTCAAGCTGGCTGTGCTCTACCAGGCTGCTGTGTGGCCCTGTTGCTCTGGTTGGCCTT  
 GCTCCTGTCCATACAGCGGAGGCTGCCCGAGAGCGGAAAATCAAGTACTCGAAGCTGCTGTCCATGGAG  
 GTGAGTGACACCAGTACTCTGAGCAGGGACAGAACAGGACTGGCTTGTGAAGGCCATGAGGGAGGAAC  
 ACTCAGAC

**ACGCGT**ACGCGGCCGCTCGAGCAGAACTCATCTCAGAAGAGGATCTGGCAGCAAATGATATCCTGGATT  
 ACAAGGATGACGACGATAAGGTTTAA

**Protein Sequence:**

>RC206154 protein sequence  
 Red=Cloning site Green=Tags(s)

MSANPRWDISRALGVAKLFHLVCGVREACVTPFLTLYLRLGLAAPWVGLMGTKHLIAAFWAPVCAFLA  
 KSYRKRALLIGSLLGSV GASLLMVLVPPVDKNRVHPCNGSSGLTSTDALPGVTLVFNITSAQESASSH  
 PAKRTAEVEMPGFRNPPGESDRETFRDLHVYLA PVSVEGARTTSQALLHPVTSGLKDHPWEVTFEVVKTA  
 LPLL TGGKGP GNPANLSG TKGAWAFDL SLEALRRTFILSLGSVAFWELLTAPLEQVADDSLYEFLDFVDA  
 TDRYRSLWWRLLGMSAGVCGITALVGQLDCFLMTSGPRGVVHFYGYSVVSTLALLVSIAPFIPICQWE  
 PSYKRVKALSIVGGDPHLLASTTVLVGAI VSTVQNFLFWMKDHGSGELVMGFSVALSLLGEILLHPF  
 KATLLRKL SRTGLVGLSCLAGQLLYSFLWSWWSVLP IQILSAISNRALWWAVGASVEDLATPRMERA  
 LSALFRGHFYSGCSLGSFVGGFVVMRFLAVLYQACCVALLLWLALLLSIQRRLLPRERKIKYSKLLSME  
 VSDTSDSEQTEQDWLVKAMREEHSD

**TRTRPLEQKLISEEDLAANDILDYKDDDDKV**

**Chromatograms:**

[https://cdn.origene.com/chromatograms/mk6515\\_c07.zip](https://cdn.origene.com/chromatograms/mk6515_c07.zip)

**Restriction Sites:** SgfI-MluI

**Cloning Scheme:**



**ACCN:** NM\_152599

**ORF Size:** 1758 bp

**OTI Disclaimer:** The molecular sequence of this clone aligns with the gene accession number as a point of reference only. However, individual transcript sequences of the same gene can differ through naturally occurring variations (e.g. polymorphisms), each with its own valid existence. This clone is substantially in agreement with the reference, but a complete review of all prevailing variants is recommended prior to use. [More info](#)

**OTI Annotation:** This clone was engineered to express the complete ORF with an expression tag. Expression varies depending on the nature of the gene.

**Components:** The ORF clone is ion-exchange column purified and shipped in a 2D barcoded Matrix tube containing 10ug of transfection-ready, dried plasmid DNA (reconstitute with 100 ul of water).

- Reconstitution Method:**
1. Centrifuge at 5,000xg for 5min.
  2. Carefully open the tube and add 100ul of sterile water to dissolve the DNA.
  3. Close the tube and incubate for 10 minutes at room temperature.
  4. Briefly vortex the tube and then do a quick spin (less than 5000xg) to concentrate the liquid at the bottom.
  5. Store the suspended plasmid at -20°C. The DNA is stable for at least one year from date of shipping when stored at -20°C.

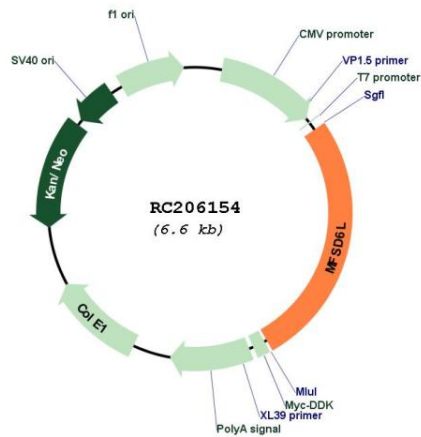
**Note:** Plasmids are not sterile. For experiments where strict sterility is required, filtration with 0.22um filter is required.

**RefSeq:** [NM\\_152599.2](#), [NP\\_689812.2](#)

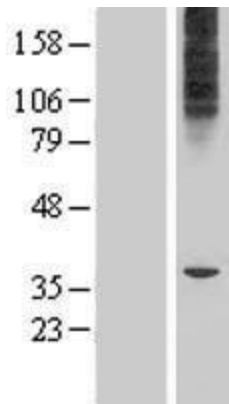
**RefSeq Size:** 2258 bp

**RefSeq ORF:** 1761 bp

**Locus ID:** 162387  
**UniProt ID:** [Q8IWD5](#)  
**Cytogenetics:** 17p13.1  
**Protein Families:** Transmembrane  
**MW:** 64 kDa

**Product images:**


Circular map for RC206154



Western blot validation of overexpression lysate (Cat# [LY407405]) using anti-DDK antibody (Cat# [TA50011-100]). Left: Cell lysates from untransfected HEK293T cells; Right: Cell lysates from HEK293T cells transfected with RC206154 using transfection reagent MegaTran 2.0 (Cat# [TT210002]).