

## Product datasheet for **RC206153**

### **RUNDC1 (NM\_173079) Human Tagged ORF Clone**

#### **Product data:**

Product Type:	Expression Plasmids
Product Name:	RUNDC1 (NM_173079) Human Tagged ORF Clone
Tag:	Myc-DDK
Symbol:	RUNDC1
Synonyms:	RUND1
Mammalian Cell Selection:	Neomycin
Vector:	pCMV6-Entry (PS100001)
E. coli Selection:	Kanamycin (25 ug/mL)



[View online »](#)

**ORF Nucleotide Sequence:**

>RC206153 ORF sequence  
 Red=Cloning site Blue=ORF Green=Tags(s)

TTTTGTAATACGACTCACTATAGGGCGGCCGGAATTCGTCGACTGGATCCGGTACCGAGGAGATCTGCC  
 GCC**CGGATCGCC**

ATGGCGGCTATCGAAGCGGCTGCAGAGCCGGTAACGGTGGTGGCGGCTGTTGGGCCAAAGGCCAAAGACG  
 AAGAGGAGGAGGAAGAGGAGCCGCTGCCACCGTGCAGAGCGGTGCCTGGGCCCCAGTTGGGGCGGTGGC  
 GGAGGCCCGCCTGGGGCAACCGCTTTTTAGAAGAGGCGACGGCCGAGGAGCCTGGCGCGGCCCGGGC  
 TCCCCGCCGATTGCGCGGGCCGGACGCTGCGCGGCTGCGGGCAGAGCGGCGGCGGCTGGACTCGGCGC  
 TGCTGGCGCTGTCTCGCACTTCGCGCAGGTGCAGTTCGCTGCGCCAGGTGGTGCAGGGGCGCCGGC  
 GGAGCAGCAGCGCTTCTGCGGGAGCTCGAAGACTTCGCCTTCGCGGCTGCCCTCACGTCTAGGTTAC  
 GAAGGGCCCGGACCCCGCCAGCGATGAGGGCGATGGGTGCCAGGGGACCGGCCACGGTTGCGGGGGC  
 AGGACCAGAGTGAGCAGGAAAAGCAAGAGCGTCTGGAAACCCAAAGGGAGAAGCAGAAAGAACTGACT  
 GCAGCTCAAGACCCAGCTAGATGACCTGGAAACGTTTGCCTATCAAGAGGGCAGTTATGACTCGCTGCCA  
 CAGTCCGTGGTGTGGAAAGACAGCGGGTGATCATAGATGAGTTAATAAAGAAACTGGACATGAATCTGA  
 ATGAGGACATCAGTTCCTGTCCACTGAAGAGCTTCGTCAGCGTGTAGATGCAGCAGTGGCTCAGATCGT  
 CAACCCAGCCGAGTCAAAGAACAGTTGGTTGAGCAACTGAAAACCTCAGATCCGAGACCTTGAGATGTTT  
 ATCAACTTCATCCAAGATGAAGTGGGAAGCCCTTGCAGACAGGTGGTGGACACTGTGAGTGCAAGGCCG  
 GTGGGAAGACAGGAAATGGCTGCAGCAGAACAGGCAGCAGCAGAACGCCTCCAGGAAACAGCAAAACAAA  
 GGCAGAGGATGTGAAGAAAGTCCGGGAGACGGGCTGCACCTGATGCGGGCAGCGCTGGCCGTGCTCCAG  
 ATCTTTGCTGTTAGCCAGTTTGGTTGTCCACAGGCCAGATCCCTCCAACCTGTGGCAGAGGGTCCAGG  
 CTGACAGAGACTACTCTCCCTTGCTGAAGAGGCTGGAGGTGCAGTGGACAGAGTGAAGCAGCTAGCCAT  
 GAGGCAGCAGCCACATGACCATGTCATACCTCTGCCAACCTCCAGGACCTCTCTCTGGGAGGCAAGGAT  
 GAGCTGACTATGGCTGTGCGGAAGGAGCTAACGGTGGCTGTGAGGGACCTGCTGGCCATGGACTGTATG  
 CCTCTCCCAGGGATGAGCCTTGTTATGGCTCCTATTGCTTGTGGTGGTGGCAGCCTTCTCTCGGCCCC  
 AGAGGCCATGCACCCGTGGGAGCTCTTTGTAAGTACTACCATGCTAAGAACGGCCGTGCTTATGTGAA  
 TCCCCAGCCGGAAGCTCTCCAGTCTTCGCCCTTCTGTTACGGGAGGCACTGTTGTACCCCCAAAC  
 AGAGCCTACTGACAGCCATCCACATGGTGTGACAGAGCATGACCCTTTAAGCGCAGTGCAGACTCAGA  
 ATTGAAGGCCCTGGTGTGCATGGCACTGAATGAGCAGCGTCTGGTGTCTGGGTGAACCTCATCTGCAAG  
 TCCGGGTCACTCATCGAGCCTCACTACCAGCCCTGGAGCTACATGGCACACAGGCTTTGAGAGTGCCC  
 TCAACCTGCTCAGTCGCCTCAGCAGCCTCAAGTTAGCCTCCCTGTAGATCTGGCTGTGCCCGAGCTCAA  
 AACATCAAAGATGCCTT

**ACGCGT**ACGCGGCCGCTCGAGCAGAACTCATCTCAGAAGAGGATCTGGCAGCAAATGATATCCTGGATT  
 ACAAGGATGACGACGATAAGGTTTAA

**Protein Sequence:**

>RC206153 protein sequence  
 Red=Cloning site Green=Tags(s)

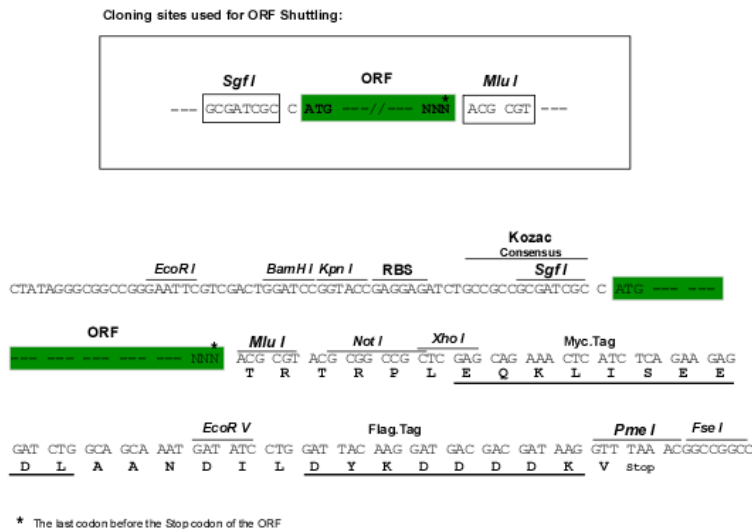
MAAIEAAEPVTVVAAVGPKAKDEEEEEELPPCEAVRWAPVGAVAEARPGATAFLEEATAEPEGAAPG  
 SPPDSPGRTLRLRAERRRLDSALLALSSHFAQVQFRLRQVVRGAPAEQQRLRELEDFAFRGCPHVLGY  
 EGPDPASDEGDGLPGDRPRLRGEDQSEQEKQERLETQREKQKELILQLKTQLDDLETFAEQEGSYDSLP  
 QSVVLERQRVIIDELIKKLDMLNEDISSLSTEELRQRVDAAVAQIVNPARVKEQLVEQLKTQIRDLEMF  
 INFIQDEVGSPLQTGGGHCECKAGGKTGNGCSRTGSSRTPPGNSKTKAEDVKKVRETGLHLMRRALAVLQ  
 IFAVSQFGCATGQIPPTLWQRVQADRYSPLLKRLEVSVDVVKQLAMRQQPHDHVITSANLQDLSLGGKD  
 ELTMAVRKELTVAVRDLLAHGLYASSPGMSLVMAPIACLLPAFSSAPEAMHPWELFVKYHYHAKNGRAYVE  
 SPARKLSQSFALPVTGGTVVTPKQSLLTAIHMLTEHDPFKRSADSELKALVCMALNEQRLVSWVNLICK  
 SGLIEPHYQPWSYMAHTGFESALNLLSRLSSLKFSPLVDLAVRQLKNIKDAF

**TR**TRPLEQKLISEEDLAANDILDYKDDDDKV

Chromatograms: [https://cdn.origene.com/chromatograms/mk6784\\_b07.zip](https://cdn.origene.com/chromatograms/mk6784_b07.zip)

Restriction Sites: SgfI-MluI

Cloning Scheme:



ACCN: NM\_173079

ORF Size: 1839 bp

OTI Disclaimer: The molecular sequence of this clone aligns with the gene accession number as a point of reference only. However, individual transcript sequences of the same gene can differ through naturally occurring variations (e.g. polymorphisms), each with its own valid existence. This clone is substantially in agreement with the reference, but a complete review of all prevailing variants is recommended prior to use. [More info](#)

OTI Annotation: This clone was engineered to express the complete ORF with an expression tag. Expression varies depending on the nature of the gene.

Components: The ORF clone is ion-exchange column purified and shipped in a 2D barcoded Matrix tube containing 10ug of transfection-ready, dried plasmid DNA (reconstitute with 100 ul of water).

Reconstitution Method:

1. Centrifuge at 5,000xg for 5min.
2. Carefully open the tube and add 100ul of sterile water to dissolve the DNA.
3. Close the tube and incubate for 10 minutes at room temperature.
4. Briefly vortex the tube and then do a quick spin (less than 5000xg) to concentrate the liquid at the bottom.
5. Store the suspended plasmid at -20°C. The DNA is stable for at least one year from date of shipping when stored at -20°C.

Note: Plasmids are not sterile. For experiments where strict sterility is required, filtration with 0.22um filter is required.

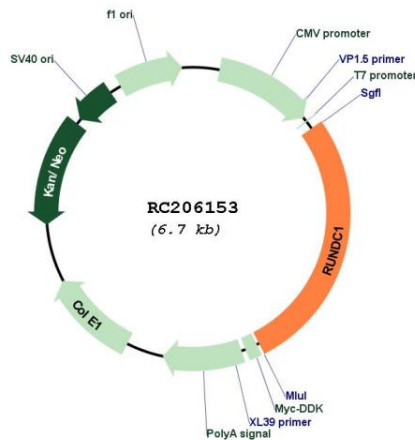
RefSeq: [NM\\_173079.1](#), [NP\\_775102.1](#)

RefSeq Size: 3844 bp

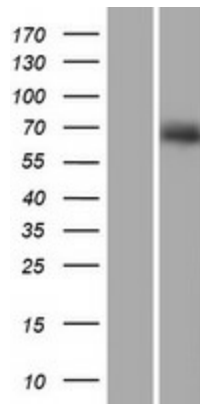
RefSeq ORF: 1842 bp  
 Locus ID: 146923  
 Cytogenetics: 17q21.31  
 MW: 67.6 kDa

**Gene Summary:** This gene encodes a protein that contains a RUN (RPIP8, UNC-14 and NESCA) domain and a coiled coil domain. The encoded protein may negatively regulate p53 transcriptional activity. This gene is a potential candidate gene for predisposition to glioma in humans. [provided by RefSeq, May 2017]

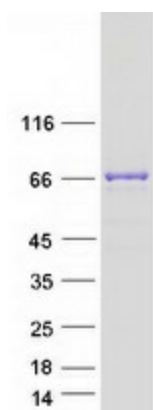
### Product images:



Circular map for RC206153



Western blot validation of overexpression lysate (Cat# [LY406676]) using anti-DDK antibody (Cat# [TA50011-100]). Left: Cell lysates from untransfected HEK293T cells; Right: Cell lysates from HEK293T cells transfected with RC206153 using transfection reagent MegaTran 2.0 (Cat# [TT210002]).



Coomassie blue staining of purified RUNDC1 protein (Cat# [TP306153]). The protein was produced from HEK293T cells transfected with RUNDC1 cDNA clone (Cat# RC206153) using MegaTran 2.0 (Cat# [TT210002]).