

## Product datasheet for **RC206150**

### **CATSPERE (NM\_173807) Human Tagged ORF Clone**

#### **Product data:**

Product Type:	Expression Plasmids
Product Name:	CATSPERE (NM_173807) Human Tagged ORF Clone
Tag:	Myc-DDK
Symbol:	CATSPERE
Synonyms:	C1orf101; C10orf101
Mammalian Cell Selection:	Neomycin
Vector:	pCMV6-Entry (PS100001)
E. coli Selection:	Kanamycin (25 ug/mL)



[View online »](#)

ORF Nucleotide  
Sequence:

>RC206150 ORF sequence  
Red=Cloning site Blue=ORF Green=Tags(s)

TTTTGTAATACGACTCACTATAGGGCGGCCGGAATTCGTCGACTGGATCCGGTACCGAGGAGATCTGCC  
GCC**CGGATCGCC**

ATGTCAGCCCGGGAAGTGCCGTGCTGCTGTGGCTGAGCTGCTATGGCTCCGCCCTTTGGAGGTATT  
CCACTAACAGCCCAAATATCGCATTTTTAGTACCAGAAGTACTATTAAGTTAGAGTATGAAGGAACATT  
ATTTACTGAGTGGAGTGTGCCAGAACTGTTTTGTGCTAAATAAAGCTCACCCACGACAGAATTGCGT  
TGTTCTCACCTGGTGTTCACGCTATAAAACCAATTGTTACTGGCCAGATGAAGAAGAACGCTATTTAT  
TTGTGGAAAGTTCTCATACTTGTCTTGTGGTACTATAGAGTTAGACATTTCTTTAACAACTTTACCCA  
GCTTATCACTGTGTGGGCATATGATCCAGAAAGTGCAGATCCTGATGAGTTGCTGGGGAATGCAGAAGAA  
CCTTCAATAAATCCATAGTACTCAGCACACAGATGGCCACATTTGGACAGAAGCCTGTCATACATACAG  
TTCTGAAGAGAAAAGTTTATTCTTCAAATGAGAAAATGAGAAGGGGTACCTGGCGTATTGTAGTACCAAT  
GACAAAAGATGATGCACTAAAGGAGATTAGAGGAAACCAAGTTACTTTTCAGGATTGCTTTATTGCAGAT  
TTTCTTATTCTGTTGACTTTTCCTTTGTTGACCATACCTGAAATTCCTGGTTATTTACCAATCTCCTCAC  
CACGTGGTAGTCAATTAATGGCTTCCTGGGATGCTTGTGTAGTTGCATCTGCTGTTTTGGTGACAGATAT  
GGAGACCTTTACACAACGATTCATTCAAATCTTGACCAGAATCAGAGTGCCTCCAGACATTCTGAGT  
GATGATGAAAGACGGAGTGTGGCTCATGTGATCTTATCGCGGGATGGAATCGTTTTTTCTATAAATGGTG  
TTCTTTACATAAAGAGTTTTCTGTTGATTATAAGACTGGGAGGAATTGTAATCTTCTGATGGTGGAAAT  
TACTGGCATTTCATCAAGAAAATGGTGTGGTCAATTTTATAAAGGCTAAAGGAAGAAGAAGCACC  
TTTGCAGTCTGGACAGAAAATGAAATTTACCTCGGATCCATTCTCTTAAGTTTGCCAGATTAGTAACATA  
CCACAGAACTGAAAAACATCCTAAGTCTATCGGTGACTGCTACTCTGACCATAGACAGGGTTGAGTATA  
AGGACACCCTCTGGAGATTGCTGTGTTTTAAATTTATTGCACTGTATGTAACGTACCAAAAAAGATTTTC  
TTAGTGATATATAATGAAGATACAAAACAGTGGGTTTCCCAAGACTTTACATTAGATGCCCTATTGACA  
GTGTTACCATGCCACATTTTACATTTTACGACTGCCAGGATTACTGCTATGGAACAAGCATAGTATCTA  
CTATTGTTACCATAATTTACCTTTACTGGGATTTTACAGACACCTGCAGGACATGGAAATCTATCAATG  
CTATCAAATGACAGCATTATTCTGAAGTTTTCATAGATTATTATGGAGATATTTTGGTAAAAATGGAAA  
ATAATGTAATATTTTATCCAAGATTAATACTAGAGATGCAGTAAAGCTGCATTTATGGACAAATTACAC  
AACAGAGCATTCAATTTCTTAAGTACATCTGGTCAAACATATTTCTGTATGCTTTGGATGATGGCACA  
ATACAAATACAGGACTATCCCTTACATCTGGAAGCACAAAGTATAGCTTTACAACAAAAGACAAATGCC  
CATACATGGCATTTCATAACAATGTTGCTCATGTTTTTACTTTTTGGACAAGGGAGAGGCTCTGACAGT  
TTGGACTCAGATCGTCTATCCAGAAAACACTGGTCTGTATGTTATTGTGGAATCTTATGGCCAAAAATA  
TTACAAGAGATCATGAGATTTCTTTGAAAGTGCCTTTGGATACTGCACCAAACTCTGACACTAACAT  
TTTATCAGAAATGATAGATTATGAGAGAATATCTGATTACTTTGAGACACAAGACAAGCACACGGGTCTTGT  
GCTGGTTCAGTTTCGACCTAGTGAATATCAAAGCATGTCCAATAGCCAAAAGGTGTTCCAAATAGCT  
GTTGGCTGTGATGATAAAAAATTCATTGCAATTAAGGATTTAGTAAAAAAGGATGTCATCACCATGATT  
TTTCATACGTGATTGAAAAGTCATATCTGAGGCATCAGCCATCGAAAACTTGAGAGTAAAGTATATTTG  
GGGAGAATATGGCTGCCCTCTGAGGCTTGACTTCACAGAAAAGTTTCAACCTGTGGTTCAACTATTTGAT  
GATAATGGCTATGTTAAAGACGTTGAAGCAAATTTTCATAGTGTGGGAAATACACGGCAGGGATGACTATA  
GCTTTAATAACTATGGCACAGAGTGGTTGTTTACATGAAGCACAGACATGGAAGTCAATGATTGAACT  
TAAACAGCACCTCCCACTAGAAGAAGTCTGGGACCTGAGTTTCTG

**ACGCGT**ACGCGGCCGCTCGAGCAGAACTCATCTCAGAAGAGGATCTGGCAGCAAATGATATCCTGGATT  
ACAAGGATGACGACGATAAGGTTTAA

**Protein Sequence:** >RC206150 protein sequence  
Red=Cloning site Green=Tags(s)

MSAREVAVLLLWLSYGSALWRYSTNSPNYRIFSTRSTIKLEYEGTLFTEWSPETCFVLNKSSPTTELRCSSPGVHAIKPIVTGPDEEERYLFVESHTEFLWYYRVRHFFNNFTQLITVWAYDPESADPDELLGNAEEPSINSIVLSTQMATLGQKPVIIHTVLKRVYSSNEKMRRGTWRIVVPMTKDDALKEIRGNQVTFQDCFIADFLILLTFPLLTIPEIPGYLPISSPRGSQLMASWDACVVASAVLVDMETFHHTDSFKSWTRIRVPPDILSDDERRSVAHVILSRDGIVFLINGVLYIKSFRGFIRLGGIVNLPDGGITGISSRKWCWVNYLLKAKGRRSTFAVWTENEIYLGSIILLKFARLVTTTELKNILSLSVTATLTIDRVEYTGHPLEIAVFLNYCTVCNVTKKIFLVIYNEDTKQWVSQDFTLDAPIIDSVTMPHFTFSALPGLLLWNKHSIYYCYHNFTFTGILQTPAGHGNSMLSNDSIIHEVFIDYYGDILVKMENNVIYFSKINTRDAVKLHLWTNYTTRAFIFLSTSGQTYFLYALDDGTIQIQDYPLHLEAQSIAFTTKDKCPYMAFHNNVAHVYFLDKGEALTVWTQIVYPENTGLYVIVESYGPKILQESHEISFEAAFQYCTKTLTLTFYQNVYERISDYFETQDKHTGLVLVQFRPSEYSKACPIAQKVFQIAVGCDDKKFIAIKGFSKKGCHHDFSYVIEKSYLRHQPSKNLRVRYIWGEYGCPLRLDFTEKFQPVVQLFDNGYVKDVEANFIVWEIHGRDDYSFNNTMAQSGCLHEAQTWKSMIELNKHLPLEEVMGPEFL

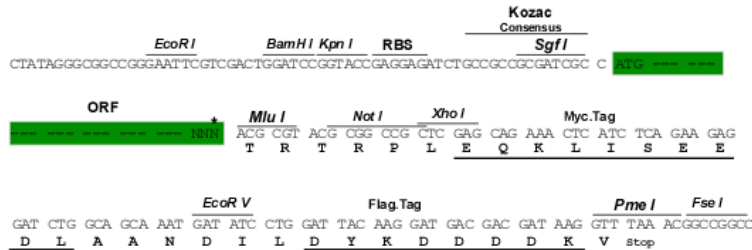
TRTRPLEQKLISEEDLAANDILDYKDDDDKV

**Chromatograms:** [https://cdn.origene.com/chromatograms/mk6534\\_g11.zip](https://cdn.origene.com/chromatograms/mk6534_g11.zip)

**Restriction Sites:** Sgfl-MluI

**Cloning Scheme:**

Cloning sites used for ORF Shuttling:



\* The last codon before the Stop codon of the ORF

**ACCN:** NM\_173807

**ORF Size:** 2496 bp

**OTI Disclaimer:** The molecular sequence of this clone aligns with the gene accession number as a point of reference only. However, individual transcript sequences of the same gene can differ through naturally occurring variations (e.g. polymorphisms), each with its own valid existence. This clone is substantially in agreement with the reference, but a complete review of all prevailing variants is recommended prior to use. [More info](#)
**OTI Annotation:** This clone was engineered to express the complete ORF with an expression tag. Expression varies depending on the nature of the gene.

**Components:** The ORF clone is ion-exchange column purified and shipped in a 2D barcoded Matrix tube containing 10ug of transfection-ready, dried plasmid DNA (reconstitute with 100 ul of water).

**Reconstitution Method:**

1. Centrifuge at 5,000xg for 5min.
2. Carefully open the tube and add 100ul of sterile water to dissolve the DNA.
3. Close the tube and incubate for 10 minutes at room temperature.
4. Briefly vortex the tube and then do a quick spin (less than 5000xg) to concentrate the liquid at the bottom.
5. Store the suspended plasmid at -20°C. The DNA is stable for at least one year from date of shipping when stored at -20°C.

**Note:** Plasmids are not sterile. For experiments where strict sterility is required, filtration with 0.22um filter is required.

**RefSeq:** [NM\\_173807.3](#)

**RefSeq Size:** 3050 bp

**RefSeq ORF:** 2499 bp

**Locus ID:** 257044

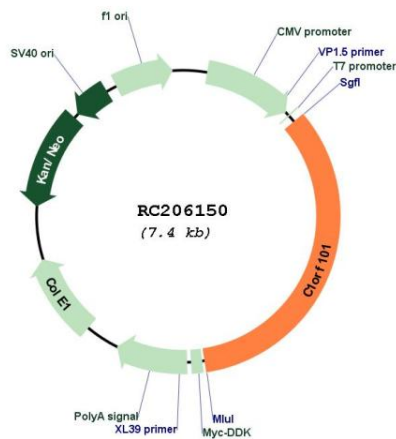
**UniProt ID:** [Q5SY80](#)

**Cytogenetics:** 1q44

**MW:** 95.6 kDa

**Gene Summary:** Auxiliary component of the CatSper complex, a complex involved in sperm cell hyperactivation. Sperm cell hyperactivation is needed for sperm motility which is essential late in the preparation of sperm for fertilization.[UniProtKB/Swiss-Prot Function]

## Product images:



Circular map for RC206150